

**ATTENTION
BUSINESS MEN
I HAVE IDEAS**
to help improve your public relations
and increase your sales

TINA BALL
MI 4-4004 164 W. Maple MI 4-0216

Marine Recruits Leave For Parris Island, S. C.

Two Birmingham men were among the inductees who left Aug. 8 for the Marine Corps recruit depot at Parris Island, S. C. This was the first group selected by the Marines to aid in the enlistment step-up program authorized recently by Congress.

The local recruits are Donald Baker Hoge, 22, and James Earl Piercefield, 20.

Hoge is the son of Mr. and Mrs. Wilmer B. Hoge, 2120 Avon and was graduated from Baldwin high school in June, 1947.

A graduate of Log Cabin high school in June, 1949, Piercefield is the son of Mr. and Mrs. Fred J. Piercefield.

Want ads cannot be accepted after 5 p.m. each Tuesday.



BELIEVING THAT to avoid accidents is better than to recuperate from them the Oakland county chapter of the American Red Cross is teaching water safety at the Walnut Lake beach. The instructor, Mrs. Richard Penman of Pontiac, puts Ellen King and Jim Melliush through a demonstration of a safe way to bring a drowning person to safety. About 60 youngsters are registered for the course which is held twice weekly. (A Joe Wheeler Photo)

Commuter Service Aid To City's Residents

By GEORGE TRUMBULL

Just 20 years ago before 10,000 cheering people, on Saturday, August 1, former governor of Michigan, Wilbur M. Brucker, helped dedicate a \$125,000 building in Birmingham that soon was to become a dominating landmark in our city. The building—the Grand Trunk Railway terminal on East Maple.

Now the miniature "Grand Central Station" of Birmingham and the connecting railroad that offers commuter service between Pontiac and Detroit is a welcome means of saving both time and transportation worries to many Detroit businessmen residing in this area.

ACCORDING TO E. E. CARL, station agent for the past eight years, the commuter system is used by many lawyers, bankers and office help employed in the General Motors building, and many other offices in the Detroit area.

Carl reports there are three trains for Detroit every morning six days a week, with the first one at 6:51, second at 7:59 and the last scheduled to leave the Birmingham station at 8 p.m.

There are also three trains returning to Birmingham in the afternoons with the one at 5:20

being the most popular, according to Carl. The two other scheduled trains are at 4:45 and 6:10.

STATISTICS SHOW that in one month alone 10,300 passengers took advantage of this commuter service. This means that approximately 500 persons used the trains in one day figuring the heaviest traffic is Monday through Friday.

These figures include only the single fare or one-way and from these statistics, Carl believes that approximately 75 would board the 6:51 train, 200 would use the next train at 7:59, while the 8 o'clock usually gets the heaviest load with about 255 ticket holders.

Most popular method of purchasing tickets used by the many Birmingham and Bloomfield residents is use of the special rate offer of 10 rides for \$2.15 or a one-way coach fare of \$3.99 including tax.

Grand Trunk Railway system also offers a 50-ride ticket for \$12.45 between Birmingham and the Detroit station at Brush street.

IN COMPARISON to the present day's costs, the special rate of 10 rides when this commuter

service was opened up was \$2.60.

The time saving element is evident in the train's 40 minute trip between the Birmingham terminal and the Brush street depot. Carl stated that many commuters, especially those employed in the General Motors building, use the Milwaukee junction which is a 20-minute time-saving trip.

Assisting Carl on his job are about six more men ranging from the janitor to ticket sellers, and many times the janitor is employed behind the ticket window. L. P. Briggs holds the honor of being a 15-year employee of the depot in the capacity of a clerk, mostly in the freight line.

BETWEEN PONTIAC and Birmingham, there are stops at Bloomfield Hills and Charing Cross road, where many times there is an over abundance of automobiles remaining their until their owners return.

Appearing also about five minutes before the train's arrival are the many wives coming to meet their husbands who were able to leave their cars at home thanks to Birmingham's 20 year old commuter service.

General news deadline is 4:30 p.m. each Tuesday.

Botany Bernat

AND OTHER
POPULAR
YARNS
in 410 Colors
MANY IMPORTED
YARNS

Mondays and Fridays
10:00 A.M. to 8:00 P.M.
Tuesdays, Wednesdays,
Thursdays and Saturdays
10:00 A.M. to 6:00 P.M.

BELL KNIT SHOP
323 W. SIXTH ST.
ROYAL OAK
(Located Downstairs)

August 9, 1951 THE BIRMINGHAM ECCENTRIC Page 7

Senior Workshop Group Asks Local Aid for Project

A group of ardent workers, members of the Birmingham Senior Workshop, are in immediate need of old sheets and pillow cases for their cancer pad project.

Sponsored jointly by the Junior League and Community House, these women have continued the work through the summer, working in the members' homes.

Mrs. Ethel Waterman, 663 West Frank, project chairman, says they must have additional material if they are to continue through the month of August.

SHE REPORTED that they are constantly receiving calls from the local office in Royal Oak for additional pads for home relief cases.

Since some of these pads are no more than four inches square, small pieces of sheets or pillow cases are usable. Anyone having material to donate to the Workshop may leave it at Mrs. Waterman's home.

We Still Have FENCE MATERIALS!!

3"—7 Foot Cedar Posts	\$.50
4"—7 Foot Cedar Posts	.65
7 Foot Turned Ball Top	1.40
8 Foot Turned Ball Top	1.50
4 Foot Yard Fence	27c Lin. Ft.
4 Foot Chain Link	43c Lin. Ft.
CLEAR CEDAR PICKETS	
4 Foot — Gothic Point	20c each

COMPLETE STOCKS OF VERMONT SLATE NEW YORK BLUESTONE

FOR IMMEDIATE DELIVERY — INSULATION
ZONOLITE FIBERGLAS
ROCK WOOL BALSAM WOOL

BIRMINGHAM LUMBER & Supply Company, Inc.

1025 HAYNES ST. PHONE MI 4-3636
Hours: 7:30 to 5:00 Mon. thru Fri.
7:30 to 1:00 Saturday

Birmingham store hours: 9:20 to 5:30



*Velvet...
fashion's darling for fall...*

Divine little black keyed to the tempo of an exciting season at hand; of cocktails for two, of dinner at eight, of the theater. Left: Dinner suit sleek and slim, softly collared and flashed with rhinestones, 10 to 18. 59.95

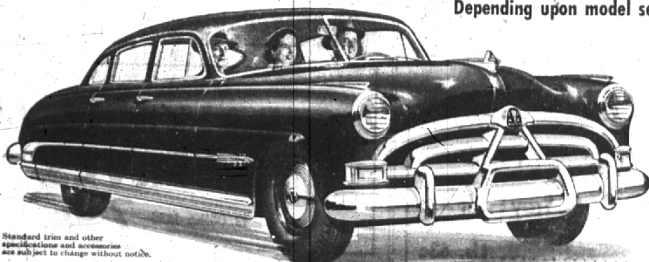
Right: A narrow streak interrupted by a shining silk surrah whittle-waisted midriff. 10 to 18. 69.95

Both, Lyons-type rayon velvet.

HIMMELHOCH'S
DETROIT • BIRMINGHAM

**Now! Finest Hudsons ever built
for as little as \$50 to \$90 a month**

Depending upon model selected and value of trade-in



Standard trim and other
specifications and accessories
are subject to change without notice.

IN MOST CASES
**No cash
needed!**

Your present car
will likely more than cover
the down payment

HUDSON

**MOST DURABLE
CAR YOUR MONEY CAN BUY**

Come in, drive the new
**NATIONAL STOCK CAR
CHAMPION!**

Prepare yourself for a wonderful surprise when you first take the wheel of the fabulous Hudson Hornet! You'll get a sample of the power, safety and stamina that have made the Hudson Hornet a five-time winner in grueling Grand National Stock Car Races, coast to coast!

820 S. Woodward
Open evenings until 9
Midwest 4-9200

CLOHSET & McCUTCHEON
HUDSON SALES AND SERVICE