

Court

(Continued from Page One)

Ritchie criticized the practices of motorists pulling to the curb at the southeast corner of Maple and Woodward then abruptly cutting across traffic to go out W. Maple. "Last week, while driving home from work, I saw four drivers in five minutes make this dangerous move," he emphasized.

Ritchie wondered why speeding offenses were not noted on the back of drivers' licenses.

CITY CLERK Irene Hanley mentioned something about a state attorney general's opinion which seemed to indicate this practice was not mandatory. Ritchie asked her to have copies

of this opinion inserted in next week's commission agenda.

Tuesday evening Ritchie and City Attorney Forbes S. Hascall spent some time at Woodward and Maple observing motorists' driving habits.

Ritchie Wednesday morning said he was noting all "cockeyed" situations, obtaining license numbers, tracing car ownerships and will read the list at Monday's meeting.

TWO FLAGRANT violations he and Hascall noted Tuesday were:

- 1) A man, driving south on Woodward, made a U-turn to get a paper at the Cunningham corner, then cut across traffic to drive out W. Maple.
- 2) A woman made a U-turn to park in front of a S. Woodward restaurant, parked her car in two parking spaces and went in to eat.

Ritchie immediately reported her to police who issued a ticket for improper parking.

Problems

(Continued from Page One)

OFTEN THIS WASTE becomes so thick that the eight inch drainage hole becomes plugged up on the truck also.

When asked whether there was any way of correcting this ever-increasing menace, Grinnell said, "It's a matter of hiring more city cleaners or letting the stuff get down here."

He went on to say that, "Within the last six months all machinery had been rebuilt and this had been done three or four times since the plant was started."

List Estes Among Top 10 in State

A recent poll of Lansing newspaper correspondents, in their selection of the ten most able members of the House of Representatives, Howard R. Estes (R.), of Birmingham, was included.

Commenting on Estes, the newsmen said, "Estes is able to get to the teeth of a bill. Highly principled. Could use more men like him in the Legislature."

July Building Passes Previous Month; Total For '51 Below Last Year

July building took an upward slant over the previous month, according to B. G. Omans, city inspector. A total of 191 permits were issued as compared to 72 in June. Construction costs for July were valued at \$853,655 and \$786,034 in June.

255 is being spent for the construction of new buildings and \$12,400 for alterations.

Construction figures for the first seven months of the year are considerably below those of 1950. At that time 335 permits had been issued for a total program of \$8,175,815. The corresponding period this year shows 573 permits for buildings of \$5,528,870 valuation.

DPW Addition Underway

Construction equipment was moved in Monday and excavation for footing began Wednesday on the new \$73,000 addition to the DPW building on Eton road.

City Purchases Pipe, Gas

City commission has purchased 8,000 gallons of gasoline from the Standard Oil company and 6,000 feet of copper pipe and 300 curb stops.

Peddling

(Continued from Page One)

Hascall admitted at the start of the meeting that his amendment needed a determination of policy by the commission, "but submit this draft as a starter."

Commissioner Richard Patterson asked Hascall if he proposed local amendment would prohibit solicitations (unless by invitation) by such agencies as the Birmingham Community House, Red Cross, and Community Chest.

NO, I DON'T think it would, because these people are not selling merchandise or services," Hascall replied.

Commissioner Frank Rising brought up the girl scout's cookie sales.

"It seems to me that under the proposed amendment, the girl scouts would be prohibited from selling their cookies, wouldn't they?" Rising questioned.

Hascall admitted, "Technically, that would probably be the case."

The city attorney also answered Mortensen's question regarding exception of local businessmen from the ordinance.

"THE LAW" requires that we treat everyone the same. We can't differentiate between local and outside interests," Hascall declared.

Edison Given Green Light

Monday night's meeting of the city commission saw the plan submitted by the Detroit Edison company for lighting on West Maple passed in order that the company might work this future construction into their program.

Photos must be submitted by noon each Friday to insure publication the following Thursday.

Fire Damages Stay Low In City; FPB Holds Four Cases for Further Action

In spite of the fact that July was quite a busy month for the Birmingham fire department, property damages were very low. The department made a total of 87 runs, and property damages were estimated at only \$185 on

buildings and contents. The department answered 25 alarm calls for fire and fire investigations, seven gas investigations, two miscellaneous runs and one each for first aid, a false alarm and general alarm.

The fire prevention team worked 28 hours on 109 inspections of business places and public buildings. Only four needed a re-inspection.

Silver Anniversary Tea

All of our old and new

customers are cordially

invited

Friday, the seventh of September

3 until 5 o'clock

La Belles

137 WEST MAPLE

Birmingham's Shop of Gifts, Books and Stationery

Christmas Wrappings mean so much!

make certain yours are carefully selected . . .

First impressions count: In Gift Wrappings as in Clothes. Tastefully chosen wrappings are the "tone of voice" which reflect your own thoughts concerning the importance of the gift nestling within!

Especially when the Gift is an important Gift the wrappings should be entirely in keeping, and it's absolutely amazing what distinctive wraps will do for any Gift.

Here at La Belles you'll find the finest gift wrappings made, in an assortment so extensive that you are assured of finding those which will be exactly right.

La Belles

137 W. MAPLE

Birmingham's Shop of Gifts, Books and Stationery

KAY COOLEY INC.

Build your "Back to School" Wardrobe on

Separates

It's not too soon for the campus-minded Miss to start planning her clothes needs for another year . . . and first on her list she'll have:

JACKETS:

Tweed, flannel, Corduroy; fitted and double breasted. 19.95 and up

BLAZERS:

Flannel, piped in, contrasting trim. 25.00

SKIRTS:

Tweed, Flannel, Tartan Plaids; gored, flared, pleated and wrap-around. 8.95 and up

SWEATERS:

Cashmeres, the finest and softest in lovely shades to match suits, skirts and jackets. 15.95 and up

Wonderful 100% wools with short or long sleeves, with or without pocket. 12.95 and up

Tailored and dressy blouses and lovely Boucle blouse-sweaters. 5.95 and up

Sketches:

Grey flannel jacket—three pocket—piped in white—comes in navy and white; red and white; brown and white; sizes 16 to 18. \$25.00
Grey flannel skirt, belted, 4 corner, comes in navy also; sizes 16 to 20. \$10.95

190 W. MAPLE
MI 4-7744



KAY COOLEY INC.

Air Cooled For Your Comfort

FINAL DAYS SUMMER CLEARANCES

Dresses	3.98 to 8.98
Jackets	5.98 and 8.98
Suits	8.98 and 9.98
Beach Coats	3.98 and 5.58
Housecoats	6.58 and 8.98
Blouses	1.98 to 5.98
Skirts	2.98 to 5.98
Swim Wear	All ½ Off
Denim and Sailcloth Shorts	
Pedal-Pushers, etc.	All ½ Off

EVERYTHING OFFERED IS FROM REGULAR STOCK—ALL SALES FINAL

Campbell's Village Store

205 Pierce Street

Telephone MI 4-7100

Iced Tea and Coffee Served on Saturday

Sale! Sale! Sale!

Summer Suits

Rich looking, long wearing suits you'll be proud to own!

Slacks

Many colors and patterns—Fine for the balance of summer!

Sport Coats

Solid and plain colors—Looks good, feels good!

Ladies' and Men's Luggage

Fancy T-SHIRTS ½ OFF

Straw HATS ½ OFF

TIES

Now 2 for \$3.00
Were \$1.50
Now 2 for \$2.25
Were \$2.00
Now 2 for \$3.50
Were \$2.50

PECK'S MEN'S WEAR

108 S. Woodward

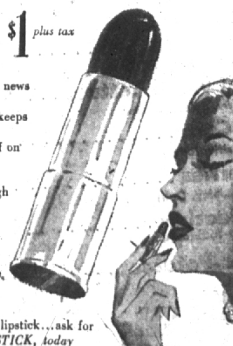
MI 4-7724

Now! a non-smear lipstick that keeps lips soft!

TUSSY PERMASTICK

\$1 plus tax

- Biggest lipstick news in years!
- Indelible...yet keeps lips soft
- Won't smear off on people, clothes, glasses
- Stays on through a meal...through a day
- Keeps lip-line neat...doesn't eat off
- Six glamorous, right colors
- Don't ask for a lipstick...ask for TUSSY PERMASTICK. Today



Wilson's
WOODWARD AT MAPLE

LADIES' SHETLAND SUITS

Made to your individual measure in a variety of classic styles. Only the very finest hand-loomed Shetland fabrics are used—made from the finest of imported wools. Excellent tailoring—perfect fit is guaranteed.

We believe this is one of the finest values we have ever been able to offer.

\$9950

Campbell's Village Store

205 Pierce Street

Telephone MI 4-7100