

LET
Chas. M. Savage
ARRANGE A
4%
Mortgage On Your Home
Up to 25 Years to repay!
MI 4-3263 or LI 3-9870
"Leave Your Family a Home
Not a Mortgage"
Equitable Life Assurance
Society of the United States
22750 Woodward Avenue
Ferndale
DISTRICT MANAGER
RUSSELL W. AUTEN

Use Eccentric Classified Ads
For Best Results

Kidd-Mulholland Rites Read



MRS. CLAUDE L. KIDD

White Gladstoll and tall white tapers decorated Holy Name Church for the 10 o'clock wedding of Mary Lou Mulholland and Claude L. Kidd, Jr.

The bride who was given in marriage by her brother Charles, is the daughter of Mrs. Frank J. Mulholland of 567 Ridgedale and the late Mr. Mulholland. Her husband's parents are the Claude L. Kidds of Muskegon, Mich.

White marquisette over satin was the gown choice of Miss Mulholland. A pleated ruffle partly filled the almost square neckline, the sleeves were long and cathedral train fell from a bustle effect in the back. A cap of satin held her fingertip veil of illusion. She carried a handkerchief which her godmother carried at her wedding, and a cascade arrangement of white gladioli.

Patricia Allen of Kenmore, N. Y., was maid of honor and Gayle Mathias of Clawson was bridesmaid. They wore strapless gowns of blue and orchid net respectively, with filmy stoles to match. They carried cascade bouquets of gladioli to match their dresses.

Roy Smith of Muskegon was the groom's best man and the ushers were Bob De Muro, Lee Saylor and John Parsons.

Following the double ring ceremony, which Rev. Joseph Kress offered, a breakfast was held at Devon Gables. The bride's mother wore a beige rose gown with lace bodice and tiered skirt of sheer nylon over taffeta. She wore a matching hat of taffeta and net, white gloves and rubrum lilies.

Mrs. Kidd's hat and accessories matched her powder blue gown and her corsage was of rubrum lilies.

The young couple left on a motor trip through New England, the bride wearing a suit of blue silk slanting, navy hat and navy accessories and a white orchid.

They will live in East Lansing where they will continue their studies at Michigan State college.

Local Woman Named Officer

Miss Agnes Baynes, 29291 Telegraph road was elected second vice president of the Eight and Forty, Departmental of Michigan, at the annual convention, held in Detroit on August 1. The Eight and Forty is the honor organization of the American Legion Auxiliary.

Miss Baynes is a member of the local Charles Edwards Unit of the American Legion Auxiliary, and the Oakland County Salon, 221, Eighth and Forty. The service program of the Eight and Forty is tuberculosis prevention juvenile type. This year the twenty-eight Salons in the Departmental of Michigan reported spending \$10,079 on the tuberculosis program for children.

Photos must be submitted by noon each Friday to insure publication the following Thursday.



WINIFRED COFFIN, Birmingham resident, is now appearing as Madam Arcati in Noel Coward's famous "Blithe Spirit," which opened at Will-O-Way Playhouse Tuesday, for a two week run. Winnie began her acting career with the student players at Connecticut college. She has been seen with the Theater Arts Group in Detroit and was in "The Women," presented by The Village Players. Last season at Will-O-Way she played Stella Livingston in "Light Up The Sky." This winter Winnie played Miss Mullin in "Carousel" for the Detroit Civic Light Opera Co. Tickets for the shows may be reserved by calling the box office.



THE ALVIN S. McEVOS of 10600 Wimbledon announce the marriage of their daughter, Anne, to Thomas Charles Collettine, son of Mrs. Burris C. Collettine and the late Mr. Collettine of Woodstock, Ill. and Tampa, Fla. The couple exchanged vows in St. Pauls Church in Woodstock on August 4. They are honeymooning in Northern Wisconsin and will visit her parents on their way to Tampa where they will make their home. Tom attended Marquette University and is completing his senior year in journalism at Tampa University. Anne graduated from Shorewood School and William Woods college.



PRINTED WITH YOUR NAME AND ADDRESS IN BLUE INK

100 FOR \$1

250 FOR \$2.00

500 FOR \$3.50

Heavy White Vellum Envelopes for mailing checks and general household use.

La Belles

ESTABLISHED 1924
Birmingham's Shop of Gifts, Books and Stationery

Local Mothers Fete Teacher

Mrs. L. A. Hyland, Mrs. William McNaughton and Mrs. Gordon Craig are planning the tea which will introduce the new Coopera-

five Nursery school teacher, Miss Pat Stratton, to mothers of enrolled children on Sept. 7. The tea will be given at the home of Mrs. John Hubert, Stoneleigh. Plans are also being made for the opening of the school on Wednesday, Sept. 12. Miss Stratton, a graduate of Palmer, comes to Birmingham from Indian Orchard, Mass.



The Finest Specialized Services in Birmingham

SUMNER
Collision Service

A Feature of Your Local Buick Dealership

808 S. WOODWARD

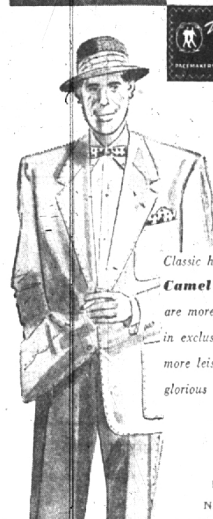
PHONE MI 4-9100

We Rework and Repaint All Make Cars

Steam Cleaning and Undercoating

To Preserve and Lengthen the Life of Your Automobile

STYLE FLASH



Classic hand needled edged Camel Jackets are more stylish than ever in exclusive new tones, more leisurely lines and glorious new comfort.

42⁵⁰

NATURAL AND NAVY BLUE

Dickinson's
IN THE WARECK BUILDING

PARKING AREA FOR YOUR SHOPPING CONVENIENCE



Pin Check
Worsted

brief-sized
for the
petite figure

Statuesque... is the created illusion of this waist-nipping 100% wool worsted pin check. Grey, brown or purple.

Sizes 10B to 18B.

69.95

SUIT SALON STREET LEVEL

Jacobson's
Maple at Bates Birmingham

NITEY NITE SLEEPERS

of heavy-weight wearable cotton knit are cozy, colorful sleeping comfort

Little sleepy-heads are snug and warm when temperatures drop... in non-stretch, non-sag Nitey Nites. They're so comfortable to wear, so easy to put on and take off.

A. Medium-weight cotton knit, ski-style two-piece sleeper in blue, yellow, red, green. Sizes 4 to 8. 2.50

B. Soft, heavy-weight two-piece sleeper with snap-on pants and built-in booties. Pink, blue, maize or green. Sizes 00 to 4. 2.25 With extra pants. 3.25

C. Medium-weight ski-style two-piece sleeper, in coral, chartreuse, red or yellow. Sizes 10 to 16. 3.50

D. One-piece heavy-weight sleeper with easy snap-closing; built-in booties. Pink, blue, maize, green; 4 to 8. 2.50

YOUTH CENTER PARKING LEVEL

Jacobson's

Maple at Bates

Birmingham

Your Headquarters for Famous EDWARDS SHOES FOR CHILDREN



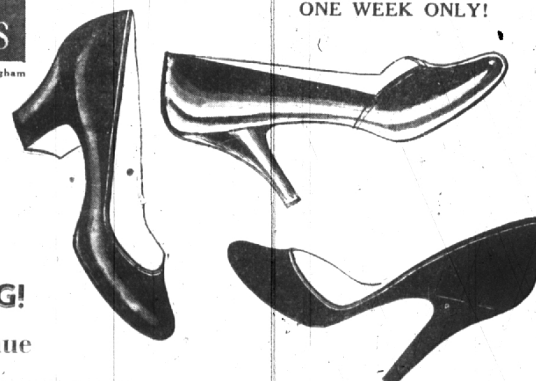
Jacobson's
Maple at Bates Birmingham

SPECIAL SELLING!

Ingenue

OPERA PUMPS

12.95 Regularly 14.95



SHOE SALON STREET LEVEL

Specially priced for a limited time only!... your every-season favorite opera pump, in black, navy or brown suede... with all heel heights from which to choose. Ideal for your back-to-campus plans, for your present and fall wardrobe... in double-dip and V-throat styles. The most versatile pumps you can wear, they accessorize tailored suits and dresses alike... are flattering to every leg and ankle.