

He who performs good acts for another, and does it without thought or hope of material reward, is serving the highest concepts of his God. (Yet God, balancing the scales of justice, never overlooks nor fails to reward a doer of good.)

"Personality" GLASSES

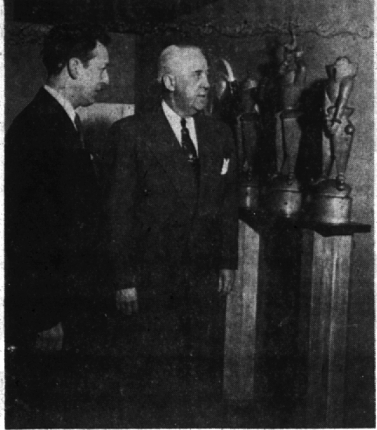
Eye Examinations—Glasses Fitted
WE OFFER FRAMES THAT FLATTER FACIAL FEATURES

Formerly associated with Severus D. Miller, Detroit, in Optical Dept. as Manager and Optometrist

Norman R. Becker, O.D.
And Staff

Complete Lens Grinding Shop on your Premises

129 E. Maple MI 4-0644



BIRMINGHAM ARTIST Marshall Fredericks (left) was selected to be first in the series of Michigan artists to exhibit their works at The Recets Club in Detroit. He is shown here with the club's president, E. Keith Fraser, at an especially-arranged preview of his sculptured pieces at the Fisher Building club.

Tired of Sagging, Dirty, Old Clothesline?

Buy Flexible, Wire-Core PLASTIC **KORDITE CLOTHESLINE!**

50 FT. **98¢**

Why risk breakage, soiled clothes, and extra work—when you can have stronger, smoother, wipe-clean Kordite! A proven clothesline success—get yours today.

- Wipe Clean With a Damp Cloth!
- Twice as Strong as Ordinary Clothesline!
- Almost No Stretch!
- Lasts Many Times Longer!

BEAUTIFUL LAWNS COME EASY the Scott's WAY

Scot across the yard with a hopperful of **Turf Builder** and lawn is fed to rich color and beauty. Then a quick joint with seed to carpet those bare spots with luxuriant grass.

Scott's LAWN SEED Get beautiful turf by using a third as much—3,000,000 seeds per pound. 7 lb — \$1.55
5 lbs — \$7.65

SPECIAL PURPOSE Seed for drier soils, deep shade, play areas—fast growing. 7 lb — \$1.25
5 lbs — \$6.15

TURF BUILDER Complete grassfood. One pound feeds grass better than 3 lbs ordinary fertilizer. Feed 2500 sq ft — \$2.50
10,000 sq ft — \$7.85

HUSTON HARDWARE CO.
OUR FORTY-SECOND YEAR
205 N. Woodward Midwest 4-7330
"The Store With The Upstairs Show Window"

Road Improvement Committee Named In Troy Township

In an effort to improve highway conditions in Troy township, road improvement committee members are being selected.

At last week's township board meeting, Ceville Mason and Treasurer Fred Hildebrandt were named to represent the board. Four township residents will be selected later, according to Supervisor Norman R. Barnard.

The board also decided to continue paying the county \$300 for the salary of an extra deputy, which it has been doing for the past three years.

\$50 REWARD
For the arrest and conviction of trespassers on riding horses destroying the grass on the—
BIRMINGHAM COUNTRY CLUB

TYPEWRITERS REPAIRED
New and Rebuilt Typewriters For Sale

Birmingham Printing
369 East Maple • MI 4-4740
CLAUDE WALKER JOHN WILKS

American Cancer Society Chairman Named for Area

Appointment of Mrs. Walter Powers, 807 Chestnut, as chairman of the Birmingham area of the American Cancer society was announced this week by Mrs. Marius Laursen, South Oakland county chairman.

Chairmen of other local areas are Franklin, Mrs. Kenneth Nichols, 29234 Vincennes; and Lathrup Village, Mrs. J. V. Bell, 2451 Bloomfield.

MRS. LAURSEN ALSO stated that the South Oakland county quota for the 1951 fund raising is \$23,000. For the first time, solicitations are being made by mail instead of personal calls and letters are now on their way to residents of this area.

Plans of the South Oakland county branch for this year were also announced by the chairman. She stated that this year more dressings will be furnished to cancer sufferers in this area than ever before.

At the same time, an enlarged program is inaugurated to educate the residents to detect cancer in the early stages when cure is still possible.

The branch uses a part of the donations to help national organizations seeking a cure to cancer.

Library Board
Members of the Baldwin Public library board will hold their annual reorganizational meeting April 19 at the library.

Shall BHS Begin Home Life Class?

A panel composed of two students, two parents and two teachers will discuss "Incorporating in to the high school curriculum a course on home and family living" at Baldwin high school gymnasium, Apr. 24 at 8 p.m.

Mrs. Lucy Cleveland Wolcott will moderate the panel which includes Avice Murray, 12th grade; and Larry Coleman, 10th grade; Blair Swartz and Mrs. Dean Coffin, parents, and teachers Harold Newcomb and Mrs. Barbara Witke.

This PTA sponsored program was planned by Mrs. Lawrence Hyland.

THEY'RE MADE OF EVERLASTING ALUMINUM!

Alumatic
L. A. REG.
ALL-WEATHER COMBINATION WINDOWS AND DOORS

Call For A Free Demonstration

MIDWEST 4-3324

WINDOWS

- Nothing to change or store.
- No ladders, tools needed.
- Easily removable for cleaning.
- Storms, screens, weatherstripping.
- Rain-proof, draft-free ventilation.
- Economical—conserve fuel.

DOORS

- Rugged everlasting construction.
- Adjustable automatic closure and hardware.
- Custom-fit frame.
- Protects house doors from weather.
- No seasonal rattling or repairs.

ONCE THEY'RE UP — THEY'RE UP FOR GOOD!

GORDON E. RIEHL

Dr. B. D. Campbell OPTOMETRIST
Briggs Building
Room 221 Midwest 4-0770

FIRE EXTINGUISHER RECHARGING
FREE PICKUP AND DELIVERY
Phone MI 4-2825
CRAIG APPLIANCES, INC.
112 S. WOODWARD

For furniture-woodwork-plywood paneling

Blonde Wood Finishes!

Be stylish — be modern, on wood trim, paneling and furniture. Smart "blonde" colors bring out natural beauty of new or unfinished wood... Dries to a rich, satiny finish that's washable and marproof.

Walker-Crawford PAINT COMPANY
714 S. WASHINGTON ACROSS FROM KROGER
ROYAL OAK PHONE LI 1-4250
OPEN FRIDAY and SATURDAY TILL 9

The **WHITTIER** Occasional Table \$69.50

The **WHITMAN** Pembroke Table \$59.50

The **ALDEN** Lamp Table \$59.50

NOW SAVE MONEY ON ALL 5

Oil and Grease Change-Over FOR SPRING

1. TRANSMISSION drained and refilled
2. CRANKCASE drained and refilled
3. REAR AXLE drained and refilled
4. FRONT WHEELS packed
5. CHASSIS LUBRICATED—including those 6 fittings missed by untrained mechanics.

PLUS: Fan Belt adjusted; Radiator Connections tightened; Battery Clamps cleaned; and Air Cleaner washed.

The North Chevrolet Company
Service Department Open 7:00 A.M. to 7:30 P.M.
Closed at Noon Saturday

1000 S. WOODWARD Midwest 4-2735

\$5.95 FOR LIMITED TIME

ON TV SEE—
McCallum & Dean
Midwest 4-5230 408 E. Maple Ave.

Dependable Insurance

You need dependable insurance for your peace of mind. We sell dependable insurance to fit your needs and purse. Let's get together. No obligation, of course.

Lawrence McKay, Jr.
264 Briggs Bldg.
Midwest 4-2800

The HEATH NURSERIES
Southfield Rd. just South of 13 Mile
Midwest 4-1264

EVERGREENS - SHRUBS
DRICORNUM - AGRICO
GPM PEAT
GARDEN SUPPLIES
RUST-OLEUM PAINTS

Open Sundays 10 to 3

NEW Imperial Masters Tables

For you who appreciate the finest, Imperial proudly presents the new Imperial Masters' Tables. . . . Outstanding traditional designs in genuine mahogany. Authentically detailed and richly finished by skilled Grand Rapids Craftsmen. See the new IMPERIAL MASTERS' TABLES now on display at Lewis Furniture. Choose them for your home.

LEWIS Fine Furniture
235 PIERCE ST. PHONE MI 4-4920
Pontiac Store .62-70 South Saginaw Street, Pontiac

Look For the Famous **IMPERIAL GREEN SHIELD!**
America's best known furniture trade mark.

The **FRANKLIN** Cocktail Table \$59.50

The **THOREAU** End Table \$39.50

The **GREELEY** Tier Table \$62.50