

Wilson's

Astonishing New Beauty
for Hair!

Lanolin Plus

Hard Water SHAMPOO



Bountiful billows of lanolized lather make the new Lanolin Plus Hard Water Shampoo not only a superb cleanser but a beauty treatment, too! So rich and efficient only one sudsing is needed... even in hard water. Works equal magic with soft water as well. Try this new super-rich liquid shampoo today... it's a beauty boon!

WILSON DRUG

Woodward At Maple

**Christ Church Cranbrook
Scene of Saturday Rites**

Christ Church Cranbrook was the scene of the Saturday wedding of Nan Corse Gilbreath and James Milton Chandler.



MRS. JAMES CHANDLER

Nan is the daughter of Mr. and Mrs. William Sydney Gilbreath, Jr., of Putman road, and her husband's parents are the Milton Corse Chandlers of New Britain, Conn. Rev. Robert L. DeWitt performed the 4:30 nuptials.

The bride wore an ivory satin gown designed with a bertha softly draped over the shoulders, a basque bodice and long sleeves. The softly pleated skirt fell into a graceful length train. She wore a double tiered veil of fine illusion which fell from a scalloped half-hat of heirloom chantilly lace. Her colonial bouquet was of white gardenias with an orchid in the center.

THE ATTENDANTS wore gowns of white and green plaid marquisette. They were distinguished by a deep oval neckline and cap sleeves. A wide sash of green satin formed a large bow in the back of the very full skirts. They wore white horsehair halos edged in green satin and carried colonial bouquets of yellow daisies.

Miss Jane Dodds attended the bride as maid of honor. The bridesmaids were Miss Patricia Daly, Mrs. Robert Skinner, Mrs. William Rowland, Mrs. Frank Sinks and Mrs. Charles R. Billy.

Robert T. Lee assisted the bridegroom as best man and the ushers were Charles M. Travis, Jr., William Rowland, Pvt. William S. Gilbreath III, Robert Skinner, Ralph S. Howe, Jr., Robert L. Timmons and M. C. Miszkovsky.

For the reception at Bloomfield Hills country club Mrs. Gilbreath wore a gown of beige crepe with a yoke of Atencon lace and a matching flowered hat. She carried green orchids on a beige bag. Mrs. Chandler was attired in a gown of rose chiffon. With this she wore a matching hat and an orchid corsage.

Following the reception, the couple left on a honeymoon trip to Florida.

**Sorority Luncheon
At Rotunda Inn**

Mrs. Russell Strickland will speak at the April 26 meeting of the Birmingham Delta Gamma Association. Her topic will be "Sight Conservation and Aid to the Blind," the sorority's national project of which she is chairman.

The luncheon meeting will be held at Rotunda Inn, Pine Lake. Mrs. T. C. Yarnell and Mrs. E. H. Beers are in charge of the arrangements.

Election of officers will also take place at this meeting.

Miss William Shultz and Miss Shirley Hersey will go to Ann Arbor Saturday, April 21, to attend the organization's biennial province conference. They will represent Birmingham's Alumnae Association of Delta Gamma as delegates to the series of Saturday meetings.

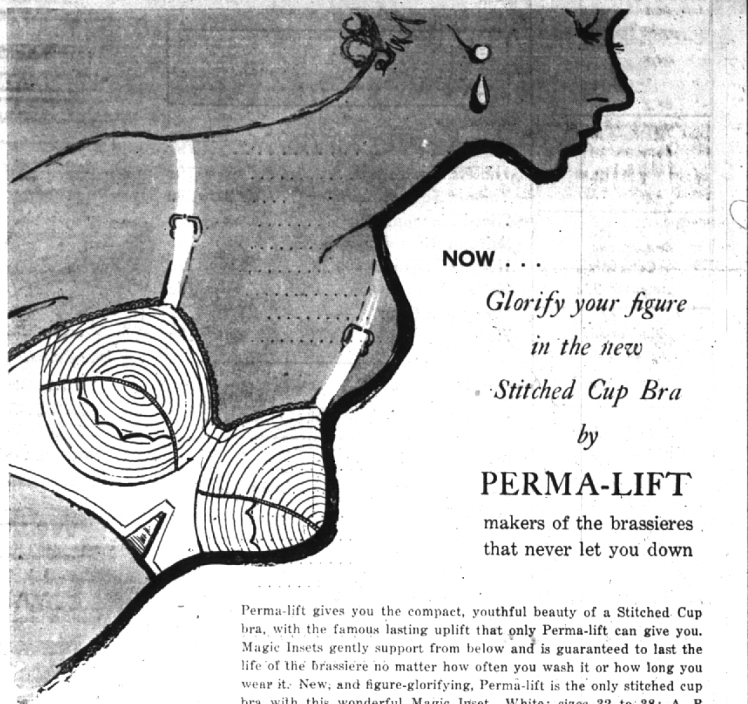
**Pilot Stationed
At Langley Field**

First Lt. Donald E. Orr, son of Mr. and Mrs. Wayne J. Orr of 1372 Bernaville, is now stationed

at Langley Air Force Base, Va. with the 85th Bombardment Squadron, Light Jet, 47th Bombardment wing, light as a jet bomber pilot.

served for several months and was awarded the Air Medal with two Oak Leaf Clusters and the Korean Campaign medal with three battle stars.

Why keep accumulating unwanted household items? Convert them into cash by selling them thru an Eccentric Classified Ad.



NOW...

Glorify your figure
in the new
Stitched Cup Bra
by

PERMA-LIFT
makers of the brassieres
that never let you down

Perma-lift gives you the compact, youthful beauty of a Stitched Cup bra, with the famous lasting uplift that only Perma-lift can give you. Magic Insets gently support from below and is guaranteed to last the life of the brassiere no matter how often you wash it or how long you wear it. New, and figure-glorifying, Perma-lift is the only stitched cup bra with this wonderful Magic Inset. White; sizes 32 to 38; A, B and C cups.

COTTON BROADCLOTH, white ----- \$3

NYLON TAFFETA, white ----- \$4

Foundations — Parking Level

Jacobson's

Maple at Bates

Birmingham

D.J. Healy SHOPS

SUPERIOR QUALITY

In the Wabek Building Phone MI 4-4025

Youthful All Wool

**JUNIOR
TOPPER**

\$25.00



The ever useful wool topper that goes over suits and dresses. Sport in length, long in looks. Smart in design, young in detail, fully lined and made of a fine all wool fabric. In five luscious colors, pink, maize, mint, beige and white. Sizes 9 to 15. A wonder coat for \$25.00.

Open Friday Evening Till Nine

PARKING AREA FOR YOUR SHOPPING CONVENIENCE

WHITE STAG

PLAYMATES

IN
Sail cloth



- SAIL RED
- SUMMER NAVY
- COFFEE CREAM
- CITRUS YELLOW

- a. Fitted Band Bra; in sizes small, medium or large. **2.50**
- b. Boxer Spars Shorts; sizes small, medium or large. **3.95**
- c. Striped Crew Hat; sizes small, medium or large. **1.95**
- d. Air Mail Striped Blazer. In sizes 10 to 18. **7.50**
- e. Plastic-lined Ditty Bag; draw-string rope tied. **2.95**
- f. Deck Trousers to roll up or down; sizes 10 to 18. **5.50**
- g. Toggle Jacket of Navy fame. Small, medium or large. **5.95**
- h. Little Boy Shorts, striped or solid; sizes 10 to 18. **3.75**
- i. Sunsquare Vest, a sun top in sizes 10 to 18. **3.95**
- j. Lazy Susan Turn-about Skirt; small, medium or large. **6.95**

- Mixable, matchable • Cool, but rugged
- Sanforized • A cinch to tub and iron quickly

Ready for plenty of wear and tear under the sun... sturdy cotton sailcloth switchabouts that make a casual wardrobe do triple duty. You'll want lots of these sport gadabouts in solid colors and air mail stripes for your summer-long loaflife... to mix and match with your whims, to take along on your vacation and to relax in during your leisure hours. Best of all, they take to suds and water like the rugged togs they are... yet, are soft and smart. Remember... no summer's complete without White Stag sailcloth!

Sportswear — Street Level

Jacobson's

Maple at Bates

Birmingham