

### Red Cross Reveals Emergency Survey Figures for County

Mass housing and feeding reports for Oakland county, completed by the American Red Cross, show Birmingham can provide housing for 3,341 and feeding facilities for 1,677 if faced with a disaster.

In Southfield the figures are 3,251, housing and 4,414, feeding. Bloomfield township can accommodate 8,210 and 5,375, respectively.

Figures are based on the findings of a committee which sought out churches, schools, clubrooms and country clubs which could care for 25 persons or more, on a basis of 30 square feet per person.

Preliminary survey work was done in this area by Mrs. Lyman Craig of Bloomfield Hills.

### Congregation Honors Pastor's 20th Year At Lutheran Church

Honoring his 20th year as pastor of the Redeemer Lutheran church, the congregation voted the Rev. Theodore Waggner an additional two weeks vacation plus a sum of money. With Mrs. Waggner he is now vacationing in the mountains near Gatlinburg, Tenn.

Mr. Waggner began his pastorate here in 1931 for a congregation of 29 members. The chapel was located at the corner of Ann and Lincoln. The present church on West Maple was built in 1942. The congregation now numbers 500 members and construction is underway on a new addition.

### Storm Sewer Hearing

May 7 has been set for a hearing on installation of a \$1,100 storm sewer on West Maple from Chester to Southfield.

### Decision

(Continued from Page One)

ed. "I think I should have been notified that I would not get a contract, rather than having to read about it first in the newspapers."

Members Anne Gregory, Wylie Groves and Ross Campbell voted for the list. William Spence and Richard Sauerbrun voted against it.

The board's March 20 vote on the approved list of contract renewals, in which Cooper's name was omitted, was 3 to 2.

Members Anne Gregory, Wylie Groves and Ross Campbell voted for the list. William Spence and Richard Sauerbrun voted against it.

Tuesday night Mrs. Lewis B. Sappington, who was not at the March meeting, said she also would have voted "yes" on approval of the list.

SPENCE AND Sauerbrun admitted they voted "no" because they felt it was not the proper way to dispose of the matter.

Said Sauerbrun, "Cooper also is assistant high school principal and probation officer. I felt that if he is doing a good job in those two positions, perhaps the board could hire him for that and not permit him to coach basketball."

"I voted no because I felt the matter was not boiled down enough for us to make an accurate decision one way or the other."

Sauerbrun said he was told the school district was large enough for Cooper to be a full-time assistant principal and probation officer.

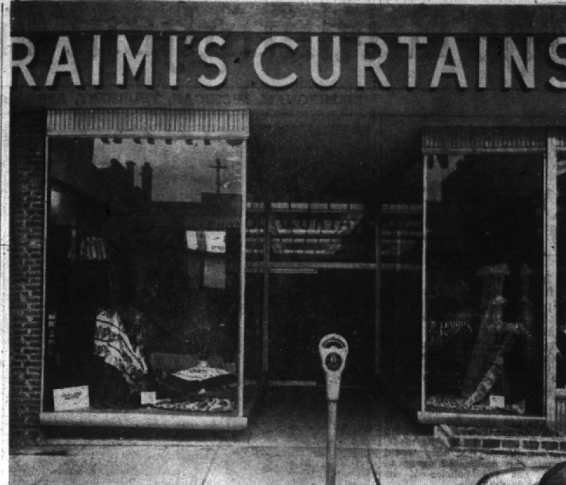
SPENCE, who brought up the idea of taking basketball coaching away from Cooper next year, explained Wednesday morning: "I felt the board should give Cooper a position he is qualified for, and eliminate the basketball job. It looks to me like a clash of personalities."

Publicly, the board has only discussed Cooper's conduct on the basketball floor, and no one has commented on his abilities (or lack of them) as an assistant principal and probation officer.

**The Birmingham Eccentric**  
Entered as Second Class Matter in the Post Office at Birmingham, Michigan, under the Act of March 3, 1919.

**SUBSCRIPTION RATES**  
(In Oakland County)  
One Year ..... \$2.50  
Six Months ..... 1.75  
Three Months ..... 1.00  
(Outside Oakland County)  
One Year ..... \$3.50  
Six Months ..... 2.25  
Three Months ..... 1.50

**George H. Atwell**  
Editor and Publisher



THE FOURTH RAIMI'S Curtains has opened at 159 West Maple. The firm established in 1924, specializes in the sale of curtains, draperies and bedspreads. Store officials stated that Birmingham was selected as a location because they felt it is the center of the growing North Woodward communities.

### This & That

(Continued from Page One)

By "firing" him, President Truman (if I am right in my conjecture) merely played into MacArthur's psychological strategy.

IN A FEW WEEKS we shall find out, when MacArthur returns to his native land.

Truly, while Great Britain (whose government still wants to do business with Red China via the UN) seeks "peace" with Red China, there also must be added glue and gloating in the Kremlin.

And what of the United States of America?

Nourished on the food of desire for freedom from the shackles of a British despot, our colonies fought and won the right to build upon the qualities of character and self-reliance, the greatest nation on earth.

Only to witness, from the ravages of wars created by international imperialism, from the corruption of political leaders who held the winning of elections above the winning of greater national character in its men and women, a decline in public and private morals.

THERE'S NOT too much of the breeze of true Americanism left to straighten out the red, white and blue of Old Glory.

For, from too many flagpoles today its folds are drooping, its majestic stars and stripes are without the familiar pattern.

Its folds, inanimate silhouette against the setting sun.

What it needs is the clarion bugle call of a re-awakened citizen interest in the deep problems of self-government's promise of freedom.

That, Dear Readers, is the essence of today's drama that has culminated in the MacArthur scene.

**Band in Festival**  
The Birmingham band will enter the state band and orchestra festival at Ann Arbor Saturday.

The 37 Birmingham musicians, under the direction of Arnold W. Biers, will play in Pattenburg auditorium at 9:30 a.m.

### Believe Addition to DPW Garage Will Cost \$95,000

A study of the plans for the addition to the DPW garage by city commissioners Ralph Main and Lance Minor indicates the construction cost will not run higher than \$95,000, they reported.

This figure is considerably lower than originally estimated. A bond issue of \$105,000 has been approved. Commissioners are considering whether to spend the additional \$10,000 to extend the garage addition to provide for future storage space.

The new construction will provide almost 10,000 more square feet of storage, and larger lunchroom and locker facilities for employees.

The architect has been instructed to draw the final plans and City Manager Donald C. Egbert was authorized to draw up the schedule for the bond sale and advertising of bids.

**City to Have UF Survey Report Soon**

The United Foundation survey of the health and welfare needs of the Birmingham-Bloomfield-Franklin area has been completed and will be ready for distribution soon.

Mrs. Roland J. Quinn, executive secretary, said that the survey conducted by Charles X. Sampson of Community Chests and Councils, Inc., had been returned to the committee and would be made public after it is received officially by the UF executive committee.

**Local Man Named To Defense Post**

A retired U. S. Army medical officer, Dr. John S. Lambie, 280 Aspen, has been named co-chairman of Oakland County's civil defense medical division. He will work with Dr. John D. Monroe, county health officer, according to Lewis C. Jarrett, defense director.

Dr. Lambie was formerly medical director for the Fisher body division of General Motors in Pontiac.

### Plans Slated For City-County Paving Project

City Manager Donald C. Egbert has been authorized by the city commission to continue negotiations with the Oakland county road commission for certain paving and resurfacing work.

The program will seek to:

(1) Resurface Maple from Adams to the Eton intersection, east of the viaduct (the county to pay for the 20 foot center strip and the city the balance).

(2) Paving the area between the existing pavement and curb and gutter on East Maple from the viaduct to the east end of the existing curb and gutter (cost to be shared equally by both agencies), and

(3) Widen Adams between Lincoln and Woodward (the county to pay for resurfacing of the 20 foot center strip).

FINAL APPROVAL will be given by the city when the contract is presented for signing. According to Egbert, details will be handled by City Engineer L. R. Gero and Leon Belknap, engineer for the county road commission.

The city manager reported that the county is considering extending the resurfacing project on East Maple beyond the viaduct to Couderc. The entire cost of the resurfacing beyond the Eton intersection would be at the county's expense.

County officials also propose to extend resurfacing beyond Couderc, under a federal aid project, for two miles.

**McClellan and Haack On Committees**

Robert McClellan, Oakland county supervisor from Birmingham, was elected chairman pro tem at last week's meeting and appointed chairman of the appropriations committee.

Elmer Haack was named chairman of the equalization committee.

**HCL Strikes CH**

The high cost of living has caught up with the Birmingham Community House and caused an increase in the price of meals provided for the various service clubs. Beginning Apr. 29, all meals will be served at \$1.25 (plus tax) per plate rather than the current \$1.10. The increase is due to labor and food cost-increase, house officials report.

### Incorporation of Three Southfield Areas Considered

Petitions requesting incorporation from three separate areas in Southfield township were referred Friday to the boundaries committee by the county board of supervisors.

The petitions were filed before the January session of the board but rules prevented them being considered "before last week's session."

The following groups requested incorporation: Mrs. Louise Lastrup Kelley who asked for incorporation of Lastrup Village as a fifth class city; residents of Magnolia subdivision who asked that the whole township be incorporated; and residents in the area bounded by Eight Mile on the

south, Nine and one-half mile on the north, Greenfield on the east, and Plum Hollow Golf club on the west, with the exception of Magnolia and Westhampton subdivisions.

The study by the boundaries committee will require a thorough investigation of the situation, including a check into the population of the areas in question. The next annual session of the board will be held the last week in June.

ON TV SEE—**McCallum & Dean**  
Midwest 4-8230 4th E. Maple Ave.

# REXALL

## One Cent Sale ENDS

### Saturday, April 21

1c SALE VALUE

PURETEST  
ASPIRIN . 100's of 5 Grains . 2 for 55c  
One of the hundreds of 1c sale values!

# SHAIN'S

DRUG STORE

Prescription Specialists for 45 Years

105 W. MAPLE MI 4-2121

## "Top-sailors"

by **Tabak** OF CALIFORNIA

Sweep the horizon with your most powerful fashion binoculars and what do you see?

**TOPSAIL**—finely woven cotton transformed into these jaunty, life-of-their-own separates in Regatta Blue, Lobster Red, Seafoam White. Sizes 10-18.

Designed by Irene Salters

ABOVE: Striped Sail Jacket \$7.95  
Wraparound Skirt \$7.95  
LOWER LEFT: Side-striped Pedal Pushers \$6.95  
Striped Sail Jacket \$7.95  
LOWER RIGHT: Hip-length Middie Blouse \$8.95  
Side-striped Shortie Shorts \$4.95

**Campbell's Village Store**  
205 Pierce Street Telephone MI 4-7100

## Local Man Named To Defense Post

A retired U. S. Army medical officer, Dr. John S. Lambie, 280 Aspen, has been named co-chairman of Oakland County's civil defense medical division. He will work with Dr. John D. Monroe, county health officer, according to Lewis C. Jarrett, defense director.

Dr. Lambie was formerly medical director for the Fisher body division of General Motors in Pontiac.

## LLOYD LAKE

JEWELER

69 W. Maple Birmingham Midwest 4-5815  
"THE STERLING STORE OF BIRMINGHAM"

Hours Daily: 9-5:30 P.M. Friday 9-6:30 P.M.

## Band in Festival

The Birmingham band will enter the state band and orchestra festival at Ann Arbor Saturday.

The 37 Birmingham musicians, under the direction of Arnold W. Biers, will play in Pattenburg auditorium at 9:30 a.m.

## BABY WEEK

### SPECIAL PURCHASE of NURSERY FURNITURE

A GEM CRIB of northern hardwood construction featuring Double Drop Sides—Plastic Casters Plastic Teething Rails Non-Toxic Finish Adjustable Springs

Only \$21.99

WATERPROOF MATTRESS Of Pink or Blue \$10.99 Ticking... Specially Priced.

**LITTLE FOLKS SHOP**  
172 WEST MAPLE BIRMINGHAM

There is only one "Little Folks Shop" in Birmingham

## Special Purchase SALE

# COATS \$18

Sizes 10 to 18 — 9 to 15  
Navy — Red — Dacia — White — Pastels

**RB SHOPS**  
Smart Feminine Apparel

142 W. Maple — Birmingham  
Open Friday Evenings Until 9