

D.J. Healy SHOPS



the finest fabrics in the
foremost shades... in the
smartest styles

PHONE
MI 4-4025

Coat and Suit Shop
on Mezzanine

Open all day Wednesday, Friday evenings until 9

Community House Adds New Classes For Adult Study

Four new classes have been added to the Community House adult education program for the coming season.

Mrs. Oswald E. Schaeffer, program chairman, said the leisure time courses would begin the week of Sept. 18.

New classes offered this fall are interior decoration, sculpturing, square dancing and weaving. In addition, the Oakland county chapter of the American Red Cross will sponsor courses in home nursing, first aid and baby care.

Mrs. Jane Kelley, former president of the Nervousness club, who has had wide experience in her field commercially, will teach the class on interior decorating. The eight-weeks course will start on Wednesday, Sept. 20, at 8 p.m.

THE SCULPTURING class, which will have 10 weekly sessions, will be held each Monday from 1 to 4 p.m. Miss Svea Kline, for several years an instructor for the Flint Institute of Arts will have charge.

She has studied in Stockholm, Sweden, Chicago, Ill., and with Carl Milles and Maria Grotel at Cranbrook. She received an award from the Academy of Science, Arts and Letters for her work last spring.

Lee N. Brennan will supervise the square dancing classes each Tuesday from 8:30 to 10 p.m. A graduate of the University of Wyoming, Brennan has made a study of square dancing in various parts of the country including New England, the Smoky mountains, middle and far west.

He conducted the dances at Adams school last year and during the summer has studied under the direction of Dr. Lloyd (Pappy) Shaw at Colorado Springs.

Mrs. Nellie Sargent Johnson, with 30 years experience and several books to her credit, will teach the fundamentals of weaving. Her classes will begin in Friday, Sept. 22, and will continue for 10 weeks. Class hours are from 1 to 4 p.m.

OTHER CLASSES scheduled are beginners bridge or canasta, Thursdays from 1:30 to 3:30 and Fridays, 8 to 10 p.m., under the direction of Mrs. Dorothy Charlton.

Pottery, two classes, 1:30 to 3:30 and 8 to 10, each Tuesday, Mrs. Edith B. Foster in charge;

clothing construction, will have three groups under the supervision of Mrs. Mary J. Woodworth. The classes will meet Tuesdays from 9 to 11:30 a.m.; Wednesdays, 7:30 to 10 a.m. and Thursdays, from 1 to 3:30 p.m.

Rug hooking will be taught by Mrs. Anne Bigdon on Mondays from 10 a.m. to 3:30 p.m.; silver working, Mrs. Thelma Anderson, Tuesdays from 1 to 4 p.m. and 7 to 10 p.m. and advance classes from 9 a.m. to noon each Wednesday.

MRS. ALICE BURLINGAME will give instruction in dirt gardening each Monday from 8 to 10 p.m., starting Sept. 25. Maurice Licht will have painting

classes each Thursday from 8 to 10 p.m., with slip covering classes beginning Oct. 4, under the direction of Mrs. Alice Flemington. These will be held each Wednesday from 1:30 to 3:30 p.m.

All standard courses will run for 10 weeks with the exception of dirt gardening and slip covering, which are five weeks each. Mrs. Lillian Glass, R. N., will teach classes in home nursing and baby care. Classes are each Thursday from 1 to 4 p.m.

Further information regarding any of the classes may be obtained by calling the Community House.

Packers Market to Open Sunday Noon; 4-Day Cooking School Set Next Week

Packers Super Market's new Birmingham store on S. Woodward will be opened to the public Sunday at 1 p.m.

The opening will feature a radio interview over WCAR of Packers and city officials. A total of 57 awards will be made to visitors, and include an electric range, hot-plate and deluxe ironer.

Special refreshments will be provided, the company said. Company spokesmen also announced the chain would sponsor a 4-day cooking school for Birmingham housewives, to be held at the Community House Tuesday, Wednesday, Friday and Saturday, Sept. 19, 20, 22 and 23.

CLASSES WILL BE held between 1:30 and 3:30 p.m. and will present complete aid to meal planning and preparation.

Mrs. Adele Hunt, well-known food author, will give the instructions and demonstrations. Each day of the school Packers will give away 15 large bags of groceries. A new electric range from Craig Appliances, Inc., 112 S. Woodward, will be awarded on the last day of the school.

The new super market contains these modern improvements: Completely self-service, electric check-outs, wider aisles, air conditioning, carry-out service, parking lot, ball bearing grocery carts, and continuous stimulus illumination.

Each day of the school Packers will give away 15 large bags of groceries. A new electric range from Craig Appliances, Inc., 112 S. Woodward, will be awarded on the last day of the school.

The new super market contains these modern improvements: Completely self-service, electric check-outs, wider aisles, air conditioning, carry-out service, parking lot, ball bearing grocery carts, and continuous stimulus illumination.

Each day of the school Packers will give away 15 large bags of groceries. A new electric range from Craig Appliances, Inc., 112 S. Woodward, will be awarded on the last day of the school.

Each day of the school Packers will give away 15 large bags of groceries. A new electric range from Craig Appliances, Inc., 112 S. Woodward, will be awarded on the last day of the school.

Each day of the school Packers will give away 15 large bags of groceries. A new electric range from Craig Appliances, Inc., 112 S. Woodward, will be awarded on the last day of the school.

Each day of the school Packers will give away 15 large bags of groceries. A new electric range from Craig Appliances, Inc., 112 S. Woodward, will be awarded on the last day of the school.

Each day of the school Packers will give away 15 large bags of groceries. A new electric range from Craig Appliances, Inc., 112 S. Woodward, will be awarded on the last day of the school.

Each day of the school Packers will give away 15 large bags of groceries. A new electric range from Craig Appliances, Inc., 112 S. Woodward, will be awarded on the last day of the school.

Each day of the school Packers will give away 15 large bags of groceries. A new electric range from Craig Appliances, Inc., 112 S. Woodward, will be awarded on the last day of the school.

Each day of the school Packers will give away 15 large bags of groceries. A new electric range from Craig Appliances, Inc., 112 S. Woodward, will be awarded on the last day of the school.

Each day of the school Packers will give away 15 large bags of groceries. A new electric range from Craig Appliances, Inc., 112 S. Woodward, will be awarded on the last day of the school.

Each day of the school Packers will give away 15 large bags of groceries. A new electric range from Craig Appliances, Inc., 112 S. Woodward, will be awarded on the last day of the school.

Each day of the school Packers will give away 15 large bags of groceries. A new electric range from Craig Appliances, Inc., 112 S. Woodward, will be awarded on the last day of the school.

Each day of the school Packers will give away 15 large bags of groceries. A new electric range from Craig Appliances, Inc., 112 S. Woodward, will be awarded on the last day of the school.

Each day of the school Packers will give away 15 large bags of groceries. A new electric range from Craig Appliances, Inc., 112 S. Woodward, will be awarded on the last day of the school.

Each day of the school Packers will give away 15 large bags of groceries. A new electric range from Craig Appliances, Inc., 112 S. Woodward, will be awarded on the last day of the school.

Each day of the school Packers will give away 15 large bags of groceries. A new electric range from Craig Appliances, Inc., 112 S. Woodward, will be awarded on the last day of the school.

Each day of the school Packers will give away 15 large bags of groceries. A new electric range from Craig Appliances, Inc., 112 S. Woodward, will be awarded on the last day of the school.

Each day of the school Packers will give away 15 large bags of groceries. A new electric range from Craig Appliances, Inc., 112 S. Woodward, will be awarded on the last day of the school.

Each day of the school Packers will give away 15 large bags of groceries. A new electric range from Craig Appliances, Inc., 112 S. Woodward, will be awarded on the last day of the school.

Each day of the school Packers will give away 15 large bags of groceries. A new electric range from Craig Appliances, Inc., 112 S. Woodward, will be awarded on the last day of the school.

Each day of the school Packers will give away 15 large bags of groceries. A new electric range from Craig Appliances, Inc., 112 S. Woodward, will be awarded on the last day of the school.

Each day of the school Packers will give away 15 large bags of groceries. A new electric range from Craig Appliances, Inc., 112 S. Woodward, will be awarded on the last day of the school.

Each day of the school Packers will give away 15 large bags of groceries. A new electric range from Craig Appliances, Inc., 112 S. Woodward, will be awarded on the last day of the school.

Each day of the school Packers will give away 15 large bags of groceries. A new electric range from Craig Appliances, Inc., 112 S. Woodward, will be awarded on the last day of the school.

Each day of the school Packers will give away 15 large bags of groceries. A new electric range from Craig Appliances, Inc., 112 S. Woodward, will be awarded on the last day of the school.

Each day of the school Packers will give away 15 large bags of groceries. A new electric range from Craig Appliances, Inc., 112 S. Woodward, will be awarded on the last day of the school.

Each day of the school Packers will give away 15 large bags of groceries. A new electric range from Craig Appliances, Inc., 112 S. Woodward, will be awarded on the last day of the school.

Each day of the school Packers will give away 15 large bags of groceries. A new electric range from Craig Appliances, Inc., 112 S. Woodward, will be awarded on the last day of the school.

Each day of the school Packers will give away 15 large bags of groceries. A new electric range from Craig Appliances, Inc., 112 S. Woodward, will be awarded on the last day of the school.

Four Home Football Games on Schedule

Birmingham High school's football squad will play four home games this season, according to Franklyn Whitney, athletic director.

The opening home contest will be with Mt. Clemens Sept. 29. The others are with East Detroit, Oct. 20; Waterford, Nov. 3 and Royal Oak, Nov. 23.

Whitney said that season ticket books will go on sale Sept. 22 in the Hill school building. They will sell for \$4.50 each.

SINGLE GAME prices will be 74 cents for general admission tickets; \$1 for reserved seats and 25 cents for elementary school children.

Out-of-town games this year are with Dearborn, Sept. 22; Ferndale, Oct. 6; Hazel Park, Oct. 13; Port Huron, Oct. 27 and Berkley, Nov. 10.

The Birmingham Eccentric

Published every Thursday, at Birmingham, Mich., in the Eccentric Building, 220-222 North Woodward Ave. Telephone MI 4-1100. GEORGE R. AVEILL, Editor and Publisher.

Entered as Second Class Matter in the U. S. Post Office at Birmingham, Michigan, under the Act of March 3, 1917.

SUBSCRIPTION RATES
One Year \$2.00
Six Months \$1.25
Three Months \$0.75
Single Copies 10c

Published every Thursday, at Birmingham, Mich., in the Eccentric Building, 220-222 North Woodward Ave. Telephone MI 4-1100. GEORGE R. AVEILL, Editor and Publisher.

Entered as Second Class Matter in the U. S. Post Office at Birmingham, Michigan, under the Act of March 3, 1917.

SUBSCRIPTION RATES
One Year \$2.00
Six Months \$1.25
Three Months \$0.75
Single Copies 10c

Published every Thursday, at Birmingham, Mich., in the Eccentric Building, 220-222 North Woodward Ave. Telephone MI 4-1100. GEORGE R. AVEILL, Editor and Publisher.

Entered as Second Class Matter in the U. S. Post Office at Birmingham, Michigan, under the Act of March 3, 1917.

SUBSCRIPTION RATES
One Year \$2.00
Six Months \$1.25
Three Months \$0.75
Single Copies 10c

Published every Thursday, at Birmingham, Mich., in the Eccentric Building, 220-222 North Woodward Ave. Telephone MI 4-1100. GEORGE R. AVEILL, Editor and Publisher.

Entered as Second Class Matter in the U. S. Post Office at Birmingham, Michigan, under the Act of March 3, 1917.

SUBSCRIPTION RATES
One Year \$2.00
Six Months \$1.25
Three Months \$0.75
Single Copies 10c

Published every Thursday, at Birmingham, Mich., in the Eccentric Building, 220-222 North Woodward Ave. Telephone MI 4-1100. GEORGE R. AVEILL, Editor and Publisher.

Entered as Second Class Matter in the U. S. Post Office at Birmingham, Michigan, under the Act of March 3, 1917.

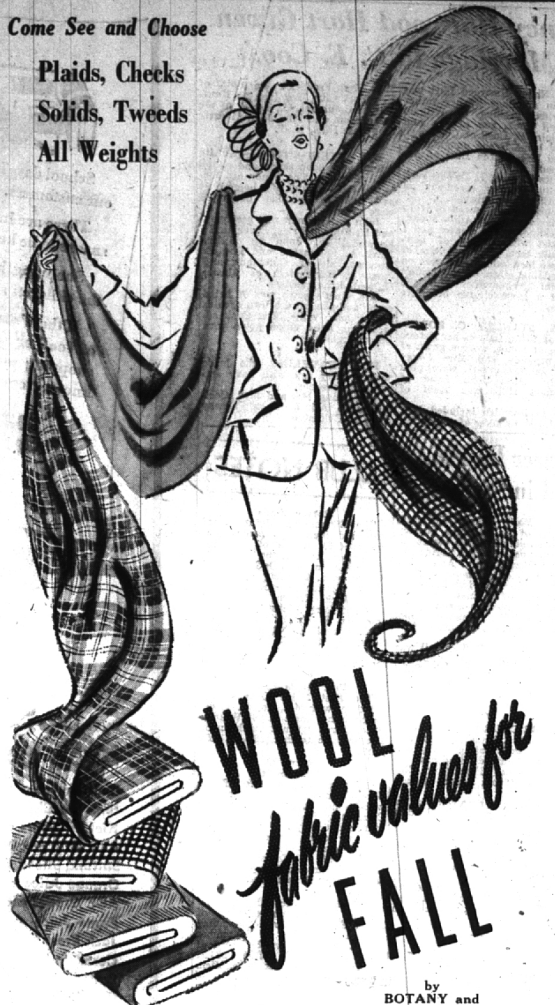
SUBSCRIPTION RATES
One Year \$2.00
Six Months \$1.25
Three Months \$0.75
Single Copies 10c

Published every Thursday, at Birmingham, Mich., in the Eccentric Building, 220-222 North Woodward Ave. Telephone MI 4-1100. GEORGE R. AVEILL, Editor and Publisher.

Entered as Second Class Matter in the U. S. Post Office at Birmingham, Michigan, under the Act of March 3, 1917.

SUBSCRIPTION RATES
One Year \$2.00
Six Months \$1.25
Three Months \$0.75
Single Copies 10c

Published every Thursday, at Birmingham, Mich., in the Eccentric Building, 220-222 North Woodward Ave. Telephone MI 4-1100. GEORGE R. AVEILL, Editor and Publisher.



Come See and Choose
Plaids, Checks
Solids, Tweeds
All Weights

WOOL fabric values for FALL

by
BOTANY and
BARDIN

For Happy Back-to-School and Winter
Wardrobe Sewing!

From \$2.95 Yard

A smart new outfit for every member of the family—a really low in price with any of the fine quality woolsens now available here for saving and easy sewing! Come in early—choose from our bolts of varied patterns and colors... all widths... all weights. Every yard a magnificent value!

The Season's Most Popular Fabric

CORDUROY

by Crompton

Fine texture corduroy... easy to work with and finishes into handsome garments. A wide selection of vivid colors and pastels. There are browns, greens, gray, reds, wine, purple, yellows, pink and blues.

\$1.95

per yd.

DARK COTTONS for SCHOOL DRESSES

We're proud of our outstanding display of popular cotton fabrics. Be sure to see them in plaids, stripes and checks.

89c

yd. up

We Carry McCALL'S and BUTTERICK PATTERNS
And We Will Order VOGUE PATTERNS
For You

THE
F. J. Mulholland
COMPANY

OPEN WEDNESDAY AFTERNOONS AND FRIDAY EVENINGS

FIRST POINTERS

for BACK-TO-SCHOOL SAVINGS

- | | | |
|-------------------------|--------------|----|
| COLGATE TOOTH PASTE | Economy Size | 59 |
| CONTI SHAMPOO | | 43 |
| IPANA TOOTH PASTE | Economy Size | 59 |
| LG. ALKA SELTZER | | 49 |
| 100 BAYER ASPIRIN | | 59 |
| LG. VASELINE HAIR TONIC | | 73 |
| DR. WEST TOOTH BRUSH | | 49 |

100 PARKE DAVIS COMBEX \$4.32

Quality—The Best Guarantee

Unicap 100 FOR VITAMINS 3!

FRESH WEEKLY FANNIE FARMER CANDIES \$1.00 Per Lb.

- THERMOS SCHOOL LUNCH KIT \$2.49
- EFFECTIVE REFRESHING SQUIBB DENTAL CREAM 69c Economy Size
- Beautiful Hair BRECK SHAMPOOS for Dry Hair Normal Hair Oily Hair 4 oz. \$1.60
- KLEENEX 300 SOFT SMOOTH TISSUES .27
- AMUROL TOOTH POWDER 49c
- WILDROOT Cream-Oil FOR THE HAIR 89c

Wilson Drug

Woodward at Maple WE DELIVER MI 4-5600