

SUPER MARKETS



Customers' Corner

Packing your order may sound like a little thing, but our trained employees give it a lot of thought.

They know that it isn't right to place five pounds of flour on top of a quarter pound of butter . . . or to place soap next to cheese.

The men and women of A&P will appreciate it if you will let them have any suggestions as to how they can make a handier package for you to take home. Please write:

Customer Relations Department,
A&P Food Stores, 420 Lexington Avenue
New York 17, N. Y.

Sweet, Juice-Filled

TOKAY GRAPES

2 Lbs. 25¢

- Indiana All-Purpose, U.S. No. 1
- Potatoes 10 Lb. Bag 33¢
 - D'Anjou Pears Sweet and Delicious 2 Lbs. 29¢
 - Macintosh Apples U.S. No. 1 Grade 3 Lbs. 25¢
 - Michigan Pascal Celery 2 1/2 Size 2 Stalks 29¢
 - Golden Ripe Bananas Pound 16¢
 - Puerto Rican Yams 3 Lbs. 25¢
 - Yellow Onions Mild and Flavorful 10 Lb. Mesh Bag 33¢
 - Brussel Sprouts Qt. Box 29¢
 - New Cabbage Crisp, Firm Heads Pound 3¢
 - Fresh Cranberries Early Black Lb. Cello Bag 22¢
 - Persian Melons Large Size Each 49¢

- Frozen Foods for Quick-Fix Treats**
- Florida Gold Fresh Frozen Orange Juice 6-Oz. Can 2 For 39¢
 - Birdseye Frozen Peas Or Honor Brand 12-Oz. Pkg. 25¢
 - Snow Crop Baby Lima Beans 12-Oz. Pkg. 29¢
 - Frozen Strawberries Honor Brand or Birdseye 12-Oz. Pkg. 49¢

- Favorite Ann Page Foods**
- Ann Page Salad Dressing Qt. Jar 51¢
 - Ann Page Pure Egg Noodles 12-Oz. Pkg. 25¢
 - Ann Page Grape Jelly 12-Oz. Jar 23¢
 - Ann Page Puddings 3 Pkgs. 17¢

Why Pay More? Save With A&P's

MARVEL BREAD

Only 15¢ 20-Oz. Loaf

"DATED" FRESH DAILY
Tops in Flavor and Quality

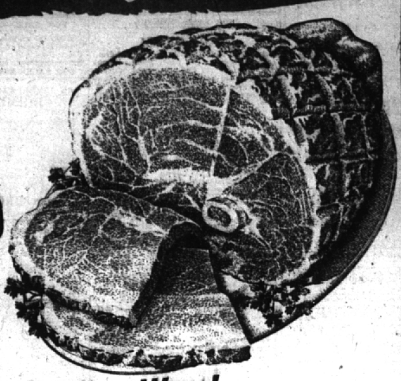
Jane Parker "Dated Daily"

FRESH DONUTS

- Golden Brown Dozen in Pkg. 20¢
- Cinnamon or Sugared Dozen in Pkg. 22¢

Try one of A&P's Easy-to-Fix
Deliciously Mild and Tender

SUPER RIGHT FULLY-COOKED SMOKED HAM



Choose Just the Cut You Want!

- SHANK PORTION Lb. 51¢
 - WHOLE HAM Lb. 65¢
 - BUTT PORTION Lb. 69¢
- Young, Tender, Fully Drawn
- Turkeys Whole or Half 1 to 30 Pounds Lb. 59¢
 - Pure Pork Sausage Lb. Cello Roll 39¢
 - Fully Dressed Fryers Lb. 61¢
 - Chicken Wings Lb. 55¢
 - Chicken Backs Lb. 21¢
 - Short Ribs of Beef Lb. 43¢
 - Skinless Frankfurters Lb. 61¢
 - Leg O' Lamb Lb. 77¢
- Delicious, Small Lean
- Smoked Picnics Lb. 47¢
 - Lamb Breast Lb. 41¢
 - Spare Ribs Lb. 55¢
 - Sliced Bacon Lb. 61¢
 - Pork Roast Rib End Lb. 49¢
 - Stewing Chickens Fully Dressed Lb. 55¢
 - Rath Bacon Blackhawk Lb. 83¢

- A&P Has Many Fine Values in Fish and Sea Foods**
- Standard, Fresh Oysters Pint 79¢
 - Fresh Haddock Fillets Lb. 53¢
 - Pan-Ready Smelts Wheaty, Frozen Lb. Pkg. 39¢
 - Fresh Blue Pike Fillets Lb. 69¢
 - Fresh Pan-Ready Perch Lb. 55¢
- Deland Brand Florida Grapefruit Juice 46-Oz. Can 33¢
- Zion Fig Bars 3-Lb. Pkg. 48¢
 - All-Purpose Cocoa Jars 1-Lb. Can 45¢
 - Pancake Flour Famous Brand 5-Lb. Pkg. 47¢
 - Lakeside Sandwich Cookies Cream-Filled Doz. in Pkg. 26¢
 - Sunnyfield Flour All-Purpose 5-Lb. Pkg. 39¢
 - Del Rich Margarine Lb. Ctn. 34¢
 - Jiffy Pie Crust Mix 9-Oz. Pkg. 2 For 25¢
 - Sunnyfield Corn Flakes 11-Oz. Pkg. 15¢
 - Shredded Raisins 12-Oz. Pkg. 18¢
 - Marshmallow Fluff Durkee's 4-Lb. Can 21¢
 - Waldorf Toilet Tissue 4 Rolls 27¢
 - Scotties Cleansing Tissue 400 in Pkg. 25¢

CHOCOLATES ARE BACK

- Delicious Chocolate Covered
- Warwick Cherries Lb. Box 55¢
 - Worthmore Cream Drops Lb. Pkg. 29¢
 - Warwick Chocolates Assorted, Light or Dark Lb. Box 59¢
 - Candy Bars or Vegetables 6 For 25¢
 - Warwick Thin Mints Lb. Box 45¢

A&P's Prices Are Marked on All Items and Shelves
So You Can See What You're Spending and Check Your Itemized Cash Register Slip

CHED-O-BIT

Cheese Food 71¢ 2-Lb. Loaf

- Kraft's Brick or Fresh Processed
- Cheese 8-Oz. Pkg. 29¢
 - Sharp Cheddar Cheese Wisconsin Lb. 59¢
 - Borden's Chateau 2-Lb. Pkg. 89¢
 - Sharp Cheese Spread Chant-o-Gold Lb. 59¢
 - Fresh Brick Cheese Wisconsin Lb. 49¢
 - Gorgonzola Imported Cheese Lb. 73¢
 - Mild Cheese Wisconsin Cheddar Lb. 46¢
 - Philadelphia Cream Cheese 8-Oz. Pkg. 37¢

A&P Super Markets

THE GREAT ATLANTIC AND PACIFIC TEA COMPANY
Prices Effective in Super Markets and Self-Service Stores Only.

| | | | | | | |
|--|---|---|--|---|--|---|
| Delicious Hot or Cold Armour's Treat 12-Oz. Can 50¢ | Armour's Star—Ready to Heat Chili Con Carne 12-Oz. Can 37¢ | Armour's Star Delicious Corned Beef Hash 12-Oz. Can 41¢ | Armour's Star Flavorful Chopped Ham 12-Oz. Can 61¢ | Armour's Makes Tasty Sandwiches Corned Beef 12-Oz. Can 47¢ | Household All-Purpose Cleanser Swift's Cleanser 2 14-Oz. Cans 25¢ | Oriental Show You Bean Sprouts 2 Cans 27¢ Show You Sauce, 4-Oz. Bot., 13¢ |
| Crisp, Fresh Flavor-Kist Saltines 1-Lb. Pkg. 29¢ | Kind to Your Hands Ivory Snow Lb. Pkg. 29¢ | Vitamin Fortified for Extra Nutrition Keyko Margarine Lb. Ctn. 31¢ | Dishes Shine Without Wiping Dreft Large Pkg. 29¢ Glass Pkg. 77¢ | Digestible Fried Foods with . . . Crisco Lb. Can 33¢ 3-Lb. Can 91¢ | For a Lovely Complexion Camay Soap 3 Bars 25¢ | |

BHAM ECCENTRIC Page 7
Thursday, October 5, 1950

Business Meeting
The next scheduled meeting of the Lions club will be held in the Birmingham Community House Wednesday noon. Since this is a regular business meeting, no program has been planned.

LEGAL NOTICES

CITY OF BIRMINGHAM, MICHIGAN NOTICE OF SPECIAL ASSESSMENT
No. 513
ACCESS DRIVE—U. S. 16
(Week ends of Wednesday Adjourned to Lots 1 and 7 Colosseum Court Sub.)
Notice is hereby given that Special Assessment Roll No. 513, heretofore made by the assessor for the purpose of defraying the cost of construction of an access drive to the west side of Woodward adjacent to Lots 1 and 7 of Colosseum Court Subdivision in more or less in my office for public inspection.

Notice is also hereby given that the Commission of the City of Birmingham will meet in the Commission Room in the Municipal Building in said City on Monday, the 21st day of October, 1950, at 9 P. M. to review said assessment, at which time and place opportunity will be given to all persons interested to be heard.

IRENE E. HANLEY,
City Clerk.
September 28, 1950. 28-29

CITY OF BIRMINGHAM, MICHIGAN NOTICE OF SPECIAL ASSESSMENT
No. 514
ACCESS DRIVE—U. S. 16
(Hunters Blk., Head to Chestnut)
Notice is hereby given that Special Assessment Roll No. 514, heretofore made by the assessor for the purpose of defraying the cost of construction of an access drive to the east side of Hunter Blk., from Hunt to Chestnut, in more or less in my office for public inspection.

Notice is also hereby given that the Commission of the City of Birmingham will meet in the Commission Room in the Municipal Building in said City on Monday, the 21st day of October, 1950, at 9 P. M. to review said assessment, at which time and place opportunity will be given to all persons interested to be heard.

IRENE E. HANLEY,
City Clerk.
September 28, 1950. 28-29

Donald McGuffey, Attorney at Law, Wilson Bldg., Birmingham, Mich.

STATE OF MICHIGAN—The Probate Court in and for the County of Jefferson, In the Matter of the Estate of Edward R. Smith, Deceased.
At a session of said court, held at the Probate Court in the City of Detroit, in said County, on the 15th day of September, A. D. 1950.
Present: Honorable Arthur E. Moore, Judge of Probate.

ORDER APPOINTING TIME FOR HEARING
Notice is hereby given and it is hereby ordered that the hearing on the petition for the appointment of the above named executor shall be held at the Probate Court in the City of Detroit, Michigan, at nine o'clock in the forenoon, at 11 o'clock in the forenoon, and at 2 P. M. on the 21st day of October, 1950, at which time and place opportunity will be given to all persons interested to be heard.

ARTHUR E. MOORE,
Judge of Probate.
September 28, 1950. 28-29

CITY OF BIRMINGHAM, MICHIGAN NOTICE OF SPECIAL ASSESSMENT
No. 515
PAVEMENT ON EAST AND WEST SIDE OF THE NORTH LINE OF LOT 131 BIRMINGHAM LOTS
Notice is hereby given that Special Assessment Roll No. 515, heretofore made by the assessor for the purpose of defraying the cost of construction of a 2 1/2 ft. pavement together with necessary improvements on the north line of Lot No. 131, Birmingham Lots, said lot being a division is now on file in my office for public inspection.

Notice is also hereby given that the Commission of the City of Birmingham will meet in the Commission Room in the Municipal Building in said City on Monday, the 21st day of October, 1950, at 9 P. M. to review said assessment, at which time and place opportunity will be given to all persons interested to be heard.

IRENE E. HANLEY,
City Clerk.
September 28, 1950. 28-29

CITY OF BIRMINGHAM, MICHIGAN NOTICE OF SPECIAL ASSESSMENT
No. 516
ALLEY FROM COLUMBIA TO A POINT 127 1/2 FEET EAST OF THE INTERSECTION OF MAPLE, BLOOM, YUZZELLE AND COLUMBIA
Notice is hereby given that Special Assessment Roll No. 516, heretofore made by the assessor for the purpose of defraying the cost of construction of a 12 ft. wide alley from Columbia to a point 127 1/2 ft. east of the intersection of Maple, Bloom, Yuzzelle and Columbia, in more or less in my office for public inspection.

Notice is also hereby given that the Commission of the City of Birmingham will meet in the Commission Room in the Municipal Building in said City on Monday, the 16th day of October, 1950, at 9 P. M. to review said assessment, at which time and place opportunity will be given to all persons interested to be heard.

IRENE E. HANLEY,
City Clerk.
October 5, 1950. 28-29

ORDINANCE NUMBER 487
AMENDING ORDINANCE AN ORDINANCE TO AMEND ORDINANCE NUMBER 486 OF THE CITY OF BIRMINGHAM ENTITLED "SIGN ORDNANCE AMENDING SECTION 8-2 TURKEY"
That Ordinance No. 486 of the City of Birmingham, entitled "Sign Ordinance" be and the same is hereby amended by amending Section 8-2 thereof to read as follows:

Section 8-2 shall conform to the following requirements:

(a) All signs, except those specifically mentioned, shall not extend beyond the building line a distance greater than 1 foot.

(b) All signs extending beyond the building line shall be not less than 10 feet above the grade or sidewalk at that point.

(c) Vertical reading signs not exceeding 10 square feet in area may project beyond the building line a distance of not more than 2 feet.

(d) No projection of parallel signs shall be required to any other wall.

(e) No post supporting a sign shall be erected in the public right of way, and no sign supporting member shall be permitted to remain in any public right of way.

(f) No sign of banner shall be strung across a public highway.

(g) Any permanent canopy on any building, which may be erected, shall be permanently attached to such building, and shall be not to exceed two feet in over-all height, nor to project more than one foot from the face of the building line.

This Ordinance shall take effect immediately upon publication after the passage thereof.

This Ordinance made and passed by the Commission of the City of Birmingham this 2nd day of October, A. D. 1950.

IRENE E. HANLEY, Mayor
IRENE E. HANLEY, City Clerk.
29

NOTICE OF INTENTION TO CREATE SPECIAL ASSESSMENT
Notice is hereby given that at a regular meeting of the Township Board held on the 28th day of September, it was declared to be the intention of said Board to improve Corvett Street by grading and blacktopping from Birchfield Road East to the East Line of Building in accordance with specifications of the Standard County Road Commission and that the cost thereof shall be defrayed by special assessment.

Notice is further given that the Township Board will meet October 24th at 8:00 o'clock P. M. to hear objections and decisions that may be made by parties interested.

Township Board,
Township Clerk,
Hated September 27, 1950. 29