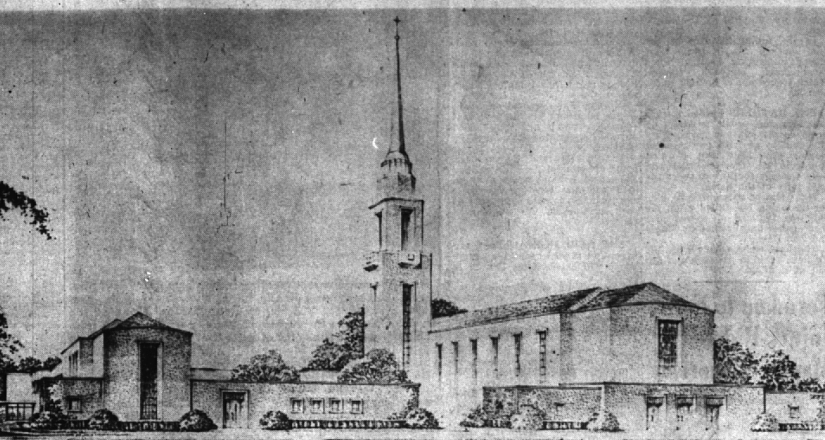


New Presbyterian Church to Be Erected in Two Units



FORMAL SANCTUARY, AT RIGHT OF TOWER, WILL BE CONSTRUCTED AT A LATER DATE
This religious center will go on a 6 1/2-acre site on West Maple, between Larchlea and Pleasant

Presbyterian Fund Raising Campaign Proceeds Smoothly

Members of the First Presbyterian church are "right on schedule" in contributing to the current \$300,000 fund raising campaign so the new church on W. Maple can get under way, the Rev. W. Glen Harris, pastor, revealed this week.

"One-quarter of the congregation has been contacted in the early stages of the drive and they have pledged a total of \$75,000," Rev. Harris said.

Peabody Market Robbed; Owners Post \$100 Reward

Robert and James Peabody, owners of Peabody market on Hunter boulevard, are offering a \$100 reward for information leading to the arrest of the person or persons who stole \$600 worth of goods from the store last Saturday night.

The theft was reported to the Birmingham police Sunday morning when the store was opened.

Officers reported that the robbery was committed by someone who had had access to a key and knew the combination of the safe. Entry was made through one of the store doors, which was left unlocked when the thief departed.

POLICE CHIEF Ralph W. Moxley said the safe had been opened by the combination and there was no evidence of force having been used.

The store owners reported that two bags had been placed in the safe at closing time Saturday with \$400 in one, \$200 in the other. They said the keys to the cash register were also in the safe but the \$50 in silver which it contained had not been disturbed.

Public Should Vote Parking Necessity, Commissioner Says

Before the city commission holds public hearings to discuss a proposed off-street parking program, the public should be told the commission intends to ask citizens to vote on whether or not such a program is advisable at this time, City Commissioner Dean G. Beyer believes.

Beyer said he would bring up this recommendation for action at Monday's meeting.

Mayor Bruce G. Booth has set Oct. 25 as the first hearing on parking.

First Plan Session Held for Halloween

Committee members met Tuesday afternoon to formulate plans for what appears to be the largest community celebration of Halloween ever held in Birmingham.

It is expected that some 500 more children will take part in the parade which saw 3,500 marchers last year.

As is customary, the celebration on Tuesday evening, Oct. 31, will consist of the parade of costumed marchers, refreshments at Hill school, movies for the elementary grades and the junior and senior high school dances.

Youth Hurt Slightly When Struck by Car

Robert Miller, 18, of 1021 Northlawn, suffered cuts and bruises Wednesday, Sept. 27, at 6:54 p.m. when he was knocked from his bicycle by a car driven by Robert C. Brown, 588 Cherry court. Miller was treated at St. Joseph's Hospital and released.

Brown was ticketed for making an improper left turn. He told police Miller had no lights on his bicycle and he did not see him in time to avoid the accident.

THIS and THAT

By G. R. A.

Detroit, by comparison with the bulldozers going on in many of the nation's largest cities, is clean in its government. True, a few years back the Fourth City did have a bit of scandal in government circles. But for reform, New York, Chicago, and Kansas City still hold the lead in municipal dishonesty.

More than half of the population of the United States now lives in 147 metropolitan areas, government reports now tell us. Which recalls the old belief that when before a nation's people no longer live close to the rural areas, that nation is in its decline.

A white leghorn hen in Ithaca, N. Y., has established a new world record by laying 263 eggs in 358 days. . . now let's see, President Truman has been in office nearly two thousand days and has laid . . . oh, well, you count 'em!

There was a time in the United States when a public debt was something of this glorious thing, endorsed by frugal citizens, supported to pay. But that was before the munificence that famous adage: "Why only owe it to ourselves—so why worry about it since?"

To many people, life is a fast merry-go-round, with each trying to grab the brass ring of easy living—they forget, though, that brass rings are the fingers of all who wear them.

Spain's Queen Isabella is said to have pawned some of her jewels in order to finance Columbus' discovery of this glorious land. Is history going to repeat itself. . . now that unnecessary governmental expenditures are putting us all in a hole?

The most valuable wealth on earth is the fabulous amount of gold buried by Uncle Sam at Ft. Knox. That is one great reason why Uncle Sam continues to be a perpetual pauper.

Traffic lights, when heeded, are the motorist's best friends. Which only proves that human nature is so adjusted that often one betrays his best friend.

How many, out of say, ten million people who regularly attend church, really know how to pray? Which, of course, may be one reason why folk folks believe in the prayers are never answered.

War always brings about an increase in marriages, as youth hastens its romantic destiny prior to the grim reaper's knock. It is known fact. Alas! Post-war generally results in an increase in the divorce statistics.

Conchita Cintron, beautiful Peabody bullfighter, is going to quit her dangerous vocation and get married. She says she won't know her future when she leaves the career of her mother, either. Wonder how her husband, when a family argument takes place, will face before the lady who faced deadly bulls in the arena.

When men become mad with the lust for power, they generally toss away most of their rational thinking processes—and live to regret their actions. So it is that today as labor leaders, mad at Senator Taft, resort to anything and everything they can think of to defeat him for reelection in November, "Whom the gods would destroy, they first make mad."

Treasurer's Report Shows 94 Per Cent Tax Collection Here

Russell T. Berger, city treasurer, said this week that 94 per cent of the 1950 tax levy, due July 1, had been collected as of Sept. 30.

The total levy was \$602,899.19, of which \$566,754.36 has been collected.

"This amount," Berger said, "is about one per cent higher than collections at the same time last year. Actually, it represents more cash handled because of the tax increases in Birmingham this year."

Lose Something?

Then go to the place that thousands of Birmingham residents look at every week—the ECCENTRIC Classified section. Your message will be seen there.

PHONE MI 4-1100
Ask for the Want Ad desk

Educator Suggests All Citizens Read Recreation Survey

(EDITOR'S NOTE: The Birmingham Eccentric asked Dr. Earl C. Kelley, professor of secondary education at Wayne University, to comment on the local recreational survey released last week by the Youth Council. Although very busy writing a new book, Dr. Kelley took two days to study the report and to write his article, which also includes some of his observations on the general problems of youth.

During his educational career, Dr. Kelley has spent much of his time working with young people on their problems. He has written one book, a second is now being published, and he is working on a third. He is recognized in Detroit and Michigan as a leader of educational thought. He lives at 172 George, Birmingham.

By DR. EARL C. KELLEY,
Prof. of Secondary Education, Wayne Univ.

I have been asked by The Birmingham Eccentric to comment on the recreational survey, sponsored by the Community Council through the Youth Council, details of which were released last week, and also to comment on the problems of youth in general.

I found the survey to be a very good one, and I recommend it as reading to all Birmingham residents. It shows that we are better off in regard to recreational facilities than many communities, but that we have some important lacks. Many of these could be provided without too much additional expense.

If I were to criticize the report in any way, I would say that it would like to know more about what our young people think. A questionnaire was used, but these instruments often fail to get the significant ideas and feelings of people.

This is probably not the fault of those making the survey. They were asked to survey recreational facilities. The council may have made an error in surveying things, not people. It is a common mistake. Recreation is only one facet of the youth program. When we go to the youth themselves, we get all facets.

It is interesting to note that, although the surveyers were looking at facilities, they did not fail to note the damaging effects of the so-called "clubs" at the high school. They say "the relationship between the members in the social clubs and other activi-

Egbert Recommends Further Widening Of West Maple

City Manager Donald C. Egbert recommended to the city commission Monday evening that West Maple be widened from Bates to Southfield and that a special assessment district be created to defray a portion of the cost of widening.

The commission then authorized the engineering department to prepare plans and costs for the proposal.

The commission authorized Egbert to negotiate for the hiring of two appraisers, who will establish values on 10 small parcels of property in connection with the construction of West Maple from Southfield to Linden road.

The appraisals will form the basis for an offer to each individual property owner involved.

90-Days Probation For Code Violator

Clifford A. Ross, 551 Argyle, was given a three-months probation sentence in justice court here last week for violation of the city's building code.

Warrants were issued against the contractor by P.E. Chief V. W. Griffith, the other by Building Inspector Barkley Omas.

Ross was charged with blocking access to a fire hydrant and also causing a traffic hazard through the manner in which he permitted concrete blocks to be piled at a construction job.

REGISTER So You Can VOTE Nov. 7

In addition to regular office hours, the City Clerk's office will be open from 9 a.m. to noon on Saturday, Oct. 7 and Oct. 14, and from 7 to 9 p.m. on Oct. 16 and 17.

Deadline for registrations is 8 p.m. Oct. 18.

Candidates to Speak Here



GOV. G. MENNEN WILLIAMS

Birmingham Democrats will have an opportunity to hear and discuss campaign issues with Mrs. Anne Garrison, candidate for the State Legislature from this district at a meeting in the Community House Monday evening.

Gov. G. Mennen Williams is expected to attend at least part of the session to outline some state issues which voters must decide at the Nov. 7 elections.

Birmingham's Democratic organization, headed by William G. Loud will conduct the meeting.

Mrs. Garrison, who attended the Democratic state convention in Grand Rapids last weekend with Mr. and Mrs. Loud, Mr. and Mrs. Philip A. Hart and Mr. and Mrs. Harry J. McGowan, will report locally.

Pre-Election Rally Planned for Nov. 2 By Voters' League

A pre-election rally, sponsored by the Birmingham League of Women Voters, has been set for 8:30 p.m. Nov. 2 at the Community House, Mrs. Thomas Shellham, in charge of the meeting, revealed this week.

All county and congressional candidates of both parties have agreed to appear, and attempts are being made to bring in as many state candidates as possible, she said.

After all candidates have made a few brief remarks, the audience will be permitted to question them from the floor.

SHE MAKES THIS COMMENT ON THE CONVENTION: "I WAS IMPRESSED BY THE INTEGRITY AND SUBSTANTIAL CHARACTER OF THE PEOPLE ON THE GOVERNOR'S SLATE AND GLAD THAT IT INCLUDED A WOMAN."

"Also I was surprised by the number of women delegates who represented agricultural areas and pleased that they seemed so familiar with party work. What pleased us from Birmingham most of course was the selection of Philip Hart for Secretary of State,

Birmingham Gridders Drop Home Opener to Mt. Clemens, 19-6

Holding firmly to a 6-0 lead through the first half, the Birmingham Maples lost their grip on victory in their league opener and first home game of the season, when the Mt. Clemens picked up three touchdowns and an extra point to emerge with a 19-6 win at Pierce field Friday night.

Birmingham led off with a spirited drive deep into Mt. Clemens territory, picking up three first downs on the way, pushed back to their own nine yard stripe, the Bathers dug in and managed to stave off this initial threat by holding the locals a yard short of a first down.

TAKING POSSESSION of the ball, Bathers drove close to their own goal. The Bathers were forced to punt on third down when they failed to get moving on the ground.

Halfway through the second stanza the Maples picked up their only score of the game when halfback Tom Tracy broke loose with a superb exhibition of broken field running, reeling off 77 yards on a punt runback to make the touchdown.

Tracy's kick for the extra point went wide and the score at the half stood Birmingham 6, Mt. Clemens 0.

Near the end of the second quarter the injury-riddled Maples sustained a severe blow when Captain Gordon Shirk, fullback and

very spirited booster, left the field with a leg injury.

The second half began badly for Birmingham as it took the kick off. Thrown back to go for a touchdown, the Maples on the first three plays, the Maples were forced to kick. Tracy's punt went out of bounds on his own 42.

WITH MT. CLEMENS on the offensive, Bob Tagalak, halfback, cut loose on the first play for 30 yards. With nine to go for a touchdown, Bonner Upshaw, big Bather fullback, ploughed through the middle to score on third down. Halfback Jack Tyson carried around right end for the extra point, putting Mt. Clemens out in front 7-6.

Early in the fourth quarter, ill fortune again struck heavily against Birmingham, when leading Maple ground gainer Tracy was delinquent with a foot injury.

In the last stanza, a brief Maple rally was again struck heavily against Birmingham, when leading Maple ground gainer Tracy was delinquent with a foot injury.

In the last stanza, a brief Maple rally was again struck heavily against Birmingham, when leading Maple ground gainer Tracy was delinquent with a foot injury.

ANY dual of loose packing mattresses. PLY, dual of loose packing mattresses. PLY, dual of loose packing mattresses. PLY, dual of loose packing mattresses.

WITH BLOCKERS PAVING WAY, HALFBACK TOM TRACY GOES 77 YARDS FOR ONLY SCORE

Local hopes were high at this time as Birmingham took the lead 6-0



One to Go

Diana Whitman, assistant to City Manager Donald C. Egbert, said this week that only one of the quonset huts in the Cranbrook-Linden area remained. This has already been sold and the remainder of the lot within the next few days, Whitman said.

Inside The Eccentric

Bowling	Page 6
Classified Ads	Page 8
Franklin	Page 5
Lathrup	Page 2
Obituaries	Page 6
This & That	Page 3
Walnut Lake	Page 3
PART TWO	
Beverly Hills	Page 8
Community House	Page 3
Calendar	Page 3
Home & Farm	Page 2
Society	1 thru 6
PART THREE	
Ball Interview	Page 3
Bits of B'ham	Page 1
Church	Page 8
Editorials	Page 2
Looking Ahead	Page 2
Michigan Editor	Page 2
One Thing or Another	Page 2
School	Page 6