

# 'Living Costs' for Drunk Drivers Show Sharp Reduction in 20 Years

By Alice E. Morgan

There is one pleasant (?) spot in the high cost of living scene. One that shows a drop, during the last 20 years, that is really sensational.

Of course few people are taking advantage of this price reduction today (we hope), but the fact still remains that there is money to be saved if you look around in the right places.

The issue of June 5, 1930, of The Birmingham Eccentric carried a story concerning some 15 men who, singly and in groups, came in personal contact with members of the Birmingham police force and subsequently, Justices Floyd S. Beck and Malcolm Hunt.

By the time the little sessions had ended these 15 men had "contributed" nearly \$2,000 to the City of Birmingham. They were, you see, all charged with in-

toxiation while driving an automobile.

**THEY ARE GOVERNED** somewhat by the prevailing conditions at the time of arrest. Officials agree that the results of getting drunk today are cheaper than they were 20 years ago, but strongly advise against it. Apparently they view with awe the sky-rocketing prices in other fields, and feel that a wave of over-popularity in this pastime might make it equally expensive again.

## Funds

(Continued from Page One)  
\$15,000,000, largely from industry.

UNABLE TO resolve the two Oakland County hospital projects into one, the Greater Detroit Hospital Fund group selected a committee of Oakland County citizens to plan the building of the hospital project which was finally located in Birmingham.

It was revealed at Tuesday night's meeting that the funds contributed for the Bloomfield Hospital center will no doubt be turned over to the new hospital here.

If the Woodward General Hospital project goes likewise, as Baggett expects it will, then all of Oakland County's southern half will concentrate its efforts on the single project.

In the meantime, teams are now working throughout all of metropolitan Detroit, including Birmingham, to raise the additional four and one-half million dollars to complete the whole increased hospital facility project.

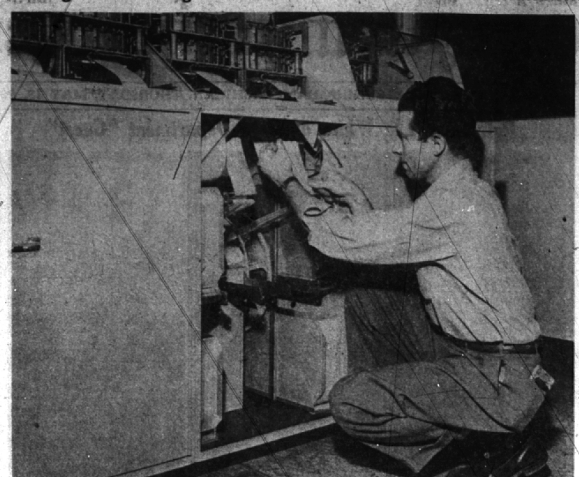
**TOMLINSON SUGGESTED** to the campaign fund workers that they stress the fact to people who already have contributed to the Woodward General Hospital project that they should realize their total funds would provide for a hospital at Coolidge and 12-Mile Rd. of less than 50 beds; that because the proposed Oakland Hospital in Birmingham will provide 200 beds, to figure out the difference and increase their contributions to meet the new and larger hospital project's costs.

Emphasis at Tuesday night's meeting was also made on the subject of "memorial gifts", to be made in the name of some departed loved one, or by persons who do wish to see, while still alive, their gifts rendering a humanitarian service to others.

It was also reported to the meeting that should the Woodward General Hospital Authority seek enabling legislation from Lansing in order to transfer its funds, Governor Williams will open that subject to the Legislature, providing there is time to accomplish it.

News copy submitted early necessarily is given preference over late items. The "early bird" usually gets the space.

# Birmingham Exchange to Have Nation's Fourth AMA Installation



GEORGE H. YOUNG ADJUSTS AMA PERFORATOR UNIT Gives error-free record of short-haul toll calls

Automatic Message Accounting equipment—rated as one of the most significant advances in telephone engineering since the introduction of the dial system—is coming to Birmingham.

Known as AMA, the equipment automatically records on paper tape information about short-haul toll calls needed to accurately render a telephone bill.

A part of the new dial system to be cut into service here at 12:01 a. m. June 18, it represents the third installation in Michigan and the fourth in the entire country.

Michigan Bell exchanges previously equipped with this "electric brain" were Royal Oak and Center Line.

WITH AMA TO serve them, Birmingham subscribers will be able to dial telephones in nearby communities, including those in

Detroit, without the assistance of an operator.

Briefly the equipment works this way: when a subscriber lifts his receiver, the regular dial apparatus finds that customer's line and at the same time connects it to an idle AMA unit.

As the dial equipment goes about its job of finding the number the customer dialed, AMA is punching busily away at a ribbon of paper tape about three inches wide.

The AMA "perforator" records the telephone number of the subscriber making the call, the date, the time the call started, whether or not the called party answered, and, finally, the time the call is completed.

A series of decoding machines later takes the tape and from the punched patterns sorts out

the information to be used, assembles all calls from each telephone in the exchange, computes the charges for short-haul toll calls, and prints the result on a slip of paper in much the same form as it appears on customers' bills.

**MICHIGAN BELL** emphasizes that AMA can account for messages only between points that are connected by direct dial lines. Regular long-distance messages, with the exception of Mt. Clemens which can be dialed directly, will still be handled by operators who make up "tickets" on such calls by hand.

The AMA development has been thoroughly tested in actual field operation and is virtually error-proof. It times calls accurately to within 1/10th of a second.

**FOWLER** also stated that he has had several recent complaints from rural box holders that advertising material has been placed in their boxes which had no postage.

Fowler said that he is against postal regulations, "he said, "and can cause trouble and inconvenience to the sender. Our carriers can confiscate the mail and hold it at the post-office for postage due."

Advertisers should instruct persons distributing their printed material that they are breaking postal laws by stuffing mail boxes rather than delivering the matter directly to the houses for which it is intended.

The approach to each box should be graded and drained to prevent the carrier's car from getting stuck.

**FOWLER ALSO** stated that he has had several recent complaints from rural box holders that advertising material has been placed in their boxes which had no postage.

Fowler said that he is against postal regulations, "he said, "and can cause trouble and inconvenience to the sender. Our carriers can confiscate the mail and hold it at the post-office for postage due."

Advertisers should instruct persons distributing their printed material that they are breaking postal laws by stuffing mail boxes rather than delivering the matter directly to the houses for which it is intended.

# This & That

(Continued from Page One)

of the prevalence of Bacchus. Special watch is kept by the Dry Control Commission, the officials charged with the sale and distribution of intoxicating beverages, licenses, enforcement, etc. It is a good thing that this temperance group is active, too, or else the devil might try to spill firewater all over the place.

To that so-called Red Dean of Canterbury, who loudly espouses the cause of Communism, we say: NUTS! Do you want proof? Then recall that he told a Windsor, Ontario, audience Congress how "the Soviet policy of alleviating what is akin to the teachings of Christ" (When did the Soviet ever relieve want, and where? And why, if he so believes, doesn't that ecclesiastical fakir from Canterbury spend the rest of his days within the "benevolent bounty" of Joe Stalin?)

Railroads are still the major transportation artery of the American economy. When they close down, a major portion of the nation's industry is threatened with stoppage. Men and women run the railroads. Most of them belong to unions, and legally are allowed to strike. Congress how ponders whether or not to outlaw the right of railroad unions, and instead resort to arbitration as a means of settling differences between employee and employer.

Perhaps better leadership might make it unnecessary for this arbitrary action... but where will you find 'em?

Lots of people have unwanted articles of many kinds—get what you want by making it in an Eccentric Classified Ad.

FOR A GOOD JOB OF ADVERTISING, call J.O.B. HERRIDGE & ASSOCIATES 3002 EAST GRAND BOULEVARD • DETROIT 2 TR 3-8300

**KIDS!** Own a big Circus FREE! Get your amazing General Electric Refrigerator. Circus of 50 separate pieces—and get it TODAY!

FREE to any boy or girl who brings Mother or Dad to see the great new G.E. 1950 Refrigerator! No obligation whatsoever. Authorized Dealer

GENERAL ELECTRIC REFRIGERATORS 162 W. Maple

Leonards Phone 223

**TELEVISION SALES & SERVICE**  
SMART RADIO and TELEVISION SERVICE  
Birmingham Theatre Building PHONE 2199

**HEARING AIDS REPAIRED**  
Microphones—Condensers—Tubes—Cords—Receivers, etc. Reasonable Complete Service—including New Hearing Aids.  
772 S. Woodward Phone 4780

**For Safety's Sake REFILL YOUR MEDICINE CHEST!**

Accidents happen! So don't get caught without these vital supplies in your medicine chest.

- Red Cross Waterproof Adhesive Tape 1 1/2" x 10 yds. 29c
- Red Cross Sterile Gauze Pads 2 1/2" x 2" Pads. 25c
- Band-Aid Adhesive Bandages—73 Assorted Adhesive Bandages. 49c
- Red Cross Cotton 4 oz. Pkg. 50c
- Red Cross Bandages, 1 1/2" x 10 yds. 18c
- Red Cross Cotton Balls, Handy Package of 65 29c

No connection whatever with American National Red Cross

**SHAIN'S DRUG STORE** Phone 61

**PEABODY'S Super MARKET**  
154 HUNTER AT MAPLE • WE DELIVER • Free Parking Front and Rear of Store  
OPEN EVERY EVENING EXCEPT SATURDAY • SUNDAY HOURS—10 A. M. TO 8 P. M.

**PEABODY'S MEAT DEPARTMENT**

Choice Quality White Milk Fed <b>VEAL FOR ROASTING</b> Rump or Leg - lb. 59c	Spring <b>LEG-O-LAMB</b> lb. - 75c	Lean—Meaty <b>FRESH SPARE RIBS</b> lb. - 45c
<b>BEEF POT ROAST</b> lb. - 59c	CHOICE SELECTION OF AGED BEEF	Choice Quality <b>Standing RIB ROAST</b> Trimmed Short Cuts lb. - 69c

LET US FILL YOUR LOCKER - NO CHARGE FOR WRAPPING

**PEABODY'S GROCERY DEPARTMENT**

GOLD MEDAL FLOUR . 5 lbs. 45c	Majestic Tomatoes . 2 1/2 size can 21c
Sunshine Krispy Crackers . lb. 25c	CANE SUGAR . . . . . 5 lbs. 43c

**PEABODY'S PRODUCE DEPARTMENT - BIGGEST IN TOWN**

California Potatoes 10 lbs. - 49c	Florida JUICE ORANGES 2 Doz. - 69c	HOME GROWN GREEN ONIONS 2 Bunches - 19c
--------------------------------------	---------------------------------------	--

WE ARE HANDLING GARDEN PLANTS NOW

**UNDERWATER REPAIR JOB**—The Grand Coulee Dam, on the Columbia River, undergoes a face-lifting with the aid of a special underwater chamber that permits workmen to labor 70 feet under water. The men are making repairs to the spillway bucket of the 22-million-ton dam. The underwater chamber is lowered over the bucket and water is pumped out so that workers can go below.

**DUTCH RAISE OIL PRODUCTION**—Since the end of the German occupation, oilmen in the Schoonebeek Field on the Netherlands-German frontier have raised their production from 40,000 barrels of crude oil a year to a little more than 40,000,000 in 1949, the largest production in Western Europe. Their nodding motion has given these pumping jacks the picturesque name of "jaknikkers" or yes-nodders. Most Schoonebeek wells are pumped.

**Cuff Links & Tie Holder by Kremenitz**

FINELY MADE... CONVENIENT... SMARTLY DESIGNED

Kremenitz jewelry has enduring richness because it is made with an overlay of hard rolled 14 Kt. gold.

**MORTIMER'S MEN'S STYLE CENTER**  
123 West Maple

**Time To Plan Your Summer Vacation CRUISES by AIR or SHIP**

ALL EXPENSE TRIPS WEST OR EAST—RESORTS ANYWHERE

**Birmingham Travel Service**  
GRACE PLUMMER REILLY  
In Campbell's Village, Store Phone 4300

**FISHER'S MARKET**  
1131 RUFFNER PHONE 3353  
FREE DELIVERY SPECIALS for THUR., FRI. & SAT.

SHORT RIBS OF BEEF lb. - 33c	Large or Ring BOLOGNA lb. - 35c
Deafance—No. 2 Cans KIDNEY BEANS 2 for 25c	
Campbell's Tomato Soup 2 cans - 21c	Northern TISSUE 4 rolls - 25c

Fine Foods For Finer Menus