

Better and Larger Program from Same Recreation Budget

Although the current city recreation budget was the same as last year, many new events and facilities were obtained this year through better planning and cooperation of sponsoring organizations, Frank Whitney, recreation director, said this week.

Whitney said copies of his annual report are available to those who wish to contact him at Hill school. "Fencing, golf, rifle shooting, extensive children and adult dramatics, the junior police academy, and elementary jewelry making were new additions which helped cause a record breaking participant attendance for the year of 42,050 persons," Whitney stated.

Some 1,500 activity units were directly supervised by a trained staff of 24 tennis, golf, softball, track and field, playground apparatus, shower pool, and baseball facilities were kept available for seasonal use.

Most participation centers are around the old favorites of swimming, skating, 9,600; playgrounds, 5,220; craft shops, 2,400; music, 1,875; and tennis, 1,111. Only 87 helped cause a record breaking participant attendance for the

YOUR Personality Pen Parker "51"

CUSTOM POINTS
A point to suit your personality—that's the Parker "51". Choose from a selection of 7 different points. There's one that best reflects your individualized needs: Broad, contoured, Extra fine, Fine, Medium, Broad, Stub and Medium oblique.

MINIMUM LEAKAGE
The NEW Parker "51" features the "pressure equalizer"—it actually reduces the nuisance of a leaky pen even under great altitude and temperature changes.

EASY TO FILL
Just squeeze the ribbed metal bar 8 times— presto your Parker "51" is full. And you're always sure of the ink supply, too, as the ink is in full view through the Pil-glass chamber.

RESISTS DETEIORATION
The improved ink chamber is specially designed to combat the old-fashioned "ink sac" deterioration trouble. Parker "51" is a long-lasting, smooth-flowing pen.

... AND IT'S BEAUTIFUL
With its many rich colors the Parker "51" is a pen you will be proud to own.

Look at these vivid colors: Cocoa, Navy Grey, Midnight Blue, Forest Green, Burgundy, Teal Blue, Plum and Black.

Standard Size **PARKER "51"**
Pen \$13.50—\$19.75
Pencil \$6.75—\$10.80
Set \$19.75—\$29.75

SEE THE NEW "DEMI-SIZE" PARKER "51" from \$13.50

Prices include excise tax where applicable.

SHAIN'S DRUG STORE
Phone 61

PEABODY'S Super MARKET
154 HUNTER AT MAPLE • WE DELIVER
Free Parking Front and Rear of Store
OPEN EVERY EVENING EXCEPT SATURDAY • SUNDAY HOURS—10 A. M. TO 8 P. M.

PEABODY'S Grocery Department

BEECHNUT or HEINZ BABY FOODS
Strained 3 for 25c
Junior 2 for 25c

Franco American SPAGHETTI. 2 for 25c

Heinz CATSUP 21c

Plain or Pimento VELVEETA 2 lb. loaf 75c

Good Luck Margarine . . . lb. 25c

PET Carnation Milk, tall can . 2 for 23c

PEABODY'S Armour Clover Bloom BUTTER lb. 65c

Majestic TOMATOES No. 2 1/2 size 21c

SPRY or CRISCO 3 lb. can 74c

PEABODY'S PRODUCE DEPARTMENT—BIGGEST IN TOWN

NO. 1 MICHIGAN POTATOES . peck 43c
10 lb. BAG

IDAHO BAKERS 57c

CELLO PACKAGE TOMATOES . . pkg. 21c
CRISP

CARROTS 2 bunches 15c

CELERY HEARTS . . . bunch 19c

PEABODY'S MEAT DEPARTMENT

LEAN TENDER HICKORY SMOKED COTTAGE BUTTS 2 to 3 lb. avg. - lb. 69c

BEEF POT ROAST Choice Cuts lb. 55c

"PORK LOIN ROAST Rib-End, Small & Lean lb. 59c

HERE'S YOUR "BIG VALUE" MEAT COUNTER

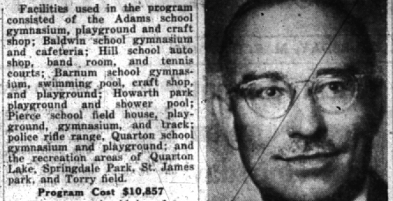
**KIRBY HAMS String End lb. 49c
Butt Half lb. 59c**

Boneless Rolled RUMP ROAST lb. 79c

Cashy Thin SLICED BACON lb. 59c

ALL POPULAR BRANDS OF BEER AND WINE — WE DELIVER

Forum Speaker



SIGURD R. WENDIN
Sigurd R. Wendin, president of Heber-Puffer-Wendin, Inc., investment consultants, will address the Women's Finance Forum at their meeting next Wednesday in Baldwin library.

Wendin, president of the company, will speak on "Common Stocks and Investment Trusts". He, as president is responsible for the analysis of securities to recommend whether to purchase or sell and also analyst for overall financial problems of individuals and institutions. In addition he handles a great many valuation cases.

A graduate of the Worcester Polytechnic Institute and the Harvard graduate school of business administration, he was a faculty member of the University of Detroit from 1924 to 1948.

The speaker yesterday, Dr. W. J. Eitman, professor of finance in the school of business administration at the University of Michigan, talked on "Bonds and Preferred Stocks."

Lathrup Man Leads in Europe; to Help Distribute Gift Toys

LATHRUP—Herman S. Lathrup, 36776 Meadowbrook way, arrived Tuesday in Frankfurt, Germany, one of four American men visiting Europe to superintend the distribution of 3,000,000 toys, gifts of American children gathered by the American Legion.

The men will visit several European capitals and also have an audience with the Pope before returning to this country March 26.

Lathrup is chairman of the national public relations committee for the American Legion.

Local Girl Killed in Highway Crash at Whitmore Lake

Services were held yesterday afternoon from the Manley Bailey funeral home for Miss Joanne Elizabeth Chapel, with burial in White Chapel cemetery. The Rev. Dr. W. Glen Harris of the First Presbyterian church officiated.

Miss Chapel, 22, daughter of Mr. and Mrs. Howard N. Chapel, 515 Madison, was killed early Sunday morning when the car in which she was a passenger missed a curve and crashed into a stump of a tree near Whitmore Lake. Her three companions were seriously injured.

She was born in Lapeer on Jan. 14, 1928, and came to Birmingham to live about 14 years ago. She was graduated from Baldwin high school in 1946 and was a senior at the school of education at the University of Michigan. She was a member of Pi Beta Phi there.

Surviving besides her father is one sister, Miss Phyllis Chapel of Birmingham, and her paternal grandmother, Mrs. W. E. Chapel of Flint.

Have You Met . . .
Former Detroiters, Mr. and Mrs. Frederick C. Kozelman and daughter, Barbara who are making their home at 1897 Stanley; Mr. Kozelman is with the Detroit News.

Scorpius
The business meeting this evening will be held at the home of Mrs. Ann Hoover, 593 South Glenhurst in aid of the Community House.

Pi Beta Phi
Alumnae will meet March 11 in the home of Mrs. A. N. McMillin, 111 Abbey for a luncheon at 12:45. Co-hostesses will be Mrs. Arthur Bull and Mrs. R. F. Watt.

CLUB NOTES

City Considering More Than Strip Pavement for Eton

City commissioners are of the opinion that any improvement of Eton road should consist of more than strip pavement for a portion of it.

Accordingly, they directed City Manager Donald C. Egbert to report back to them the cost estimates for the whole job from Yosemite to 14 Mile road.

Three years ago the commission created an assessment district for Eton strip pavement from Webster to 14 Mile.

Egbert, in a recommendation Monday night, suggested that perhaps the entire strip should be improved at one time.

City Expensive Maintenance
"The construction of a strip pavement . . . will not provide a real fire damage for the portion," he stated.

He cited expensive maintenance problems which the project were only partially done.

Property owners in the past three years have paid in approximately 65 per cent of their assessments, Egbert explained, adding that he did not believe and owners would have to pay for much more than a curb and guttering.

The original assessment, amounting to about \$4 a front foot, while the average residential street fully improved costs between \$6.50 and \$8," he said.

The original assessment would mean the widening of the street to about 36 feet between Yosemite and 14 Mile.

Strip Pavement Part Way
There is a strip pavement now between Yosemite and Webster, but the plan, if adopted, would add two more lanes and a curb and gutter to this northern portion.

On the basis of rough estimates, it would appear to me that the property owners would be involved in a rather minor additional cost to have a more satisfactory street, and the cost to the city will ultimately be less by constructing the street in one operation," Egbert explained.

He said the strip should go in during the 1951 construction season.

Hearing on Sewer Relief
Commissioners, while considering this area, set March 20 as the hearing date on the Cole-Eton-Lincoln relief sewer.

This sewer would extend east on Lincoln from Terry to Eton, then north on Eton to connect into the Webster drain now under construction.

Egbert said this would benefit Cole street residents, many of whom have periodic flooding of basements during heavy rains; serve the Terry school site; and relieve Sheffield estates, sewer served by a drain on the low end of Eton.

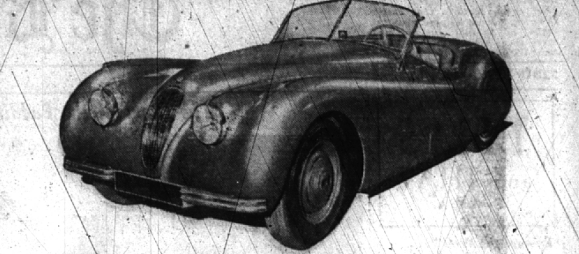
The Birmingham Eccecmtric
Published every Thursday, at Birmingham, Mich., in the Eccecmtric Building, 1224 So. West Blvd.
Telephone 11, 12 and 14
VEBRLI
Editor and Publisher

Entered as Second-Class Matter in the U. S. Post Office at Birmingham, Michigan, under the Act of March 3, 1879.

SUBSCRIPTION RATES
One Year (in Oakland County) \$2.50
Six Months 1.75
Three Months 1.00
(Outside Oakland County)
One Year \$3.50
Six Months 2.25
Three Months 1.50

WARFARE IN BURMA—Government troops in Burma look for relief a column of warfares continues in the strife-torn country. Liberation of rice fields held by rebels is the objective of government military forces.

New Model for Sports Enthusiasts



The new Jaguar XK 120 Super Sports Two-Seater is being introduced to the sport car enthusiasts of this vicinity this week by Lawrence C. Falvey of Birmingham, who has recently been appointed Jaguar dealer in 13 counties including Oakland and Wayne. Falvey, who is the Michigan distributor for the British Austin also, has two Jaguar models on display at his showrooms at 85 West Lawrence at Cass Ave. in Pontiac.

Fire Losses Remain at Low Figure Here

The Birmingham fire department's report for February shows a total fire damage for the month estimated at \$75. Of this, \$23 was the amount estimated on buildings, with the balance on contents.

The department answered 38 calls, with 19 for fire extinguishers, 16 gas investigations; two first aid runs. One false alarm was received.

The report, issued by Fire Chief V. W. Griffin, showed 117 inspections made by the fire marshal, with six referred to the fire prevention bureau for further action.

William Howing Services Tuesday

S. William Howing, 34, of 243 Elm street, died suddenly Saturday afternoon at Harper hospital in Detroit. Mr. Howing had been a surgical patient there, and was expected to return to his home here this week.

He was born in Birmingham on Sept. 15, 1916 and was graduated from Baldwin high school in 1934. On Mar. 22, 1944, he married Mary Kessel, also of Birmingham.

Services were held Tuesday from the Manley Bailey funeral home with burial in Roseland Park cemetery. The Rev. Dr. W. Glen Harris, pastor of the First Presbyterian church, officiated.

W. Bank Cashier
At the time of his death Mr. Howing was a cashier at the Birmingham Federal Savings and Loan association. Prior to that he worked with Manly Bailey as a general manager, director, and later at White Chapel cemetery.

He was also associated with the Manufacturers' Life insurance company.

He was a member of the First Presbyterian church and its Ushers club, the Birmingham Exchange club, the Fellowship club and had taken an active part in the Goodwills, especially in the newspaper Christmas sales.

He is survived by his widow and one son, Tommy; his father, Samuel W. Howing, all of Birmingham; and a brother, John M. Howing of Royal Oak.

Colonial Shopping Center Is Planned for N. Woodward

A \$250,000 shopping center is to be constructed on the east side of Woodward avenue in Blountfield township, a Pontiac contractor announced this week.

Just north of the city limits, the center will be of colonial design and provide ample off-street parking facilities. It will face the colonial terrace development on the west side of Woodward.

Everett Winter, of the Winter Contracting Co., said the project will cover about 90,000 square feet, with store space taking up approximately 32,000 square feet.

Office Space Provided
He said plans call for a wide promenade and decorative planting around the entrance. It will be one-floor except the central portion, which will contain 5,000 square feet of office space on the second floor. Ground floor units will be subdivided to tenant requirements.

Parking for several hundred cars will be provided in front and rear of the building. Winter said, with access from both north and south. All stores will have rear entrances.

Two arcades will extend from front to rear of the building, featuring entrances and window displays of adjacent stores. Rear window displays, protected by a projecting roof and including side-walk, will be seen from the parking lot.

River Rouge Water Volume to Be Recorded

Flow of the River Rouge is to be permanently recorded as a means of flood control.

City Commission Monday evening approved the construction of a small building along the river which will house the automatic recording instruments.

The U. S. Geological Survey said the city will split the annual cost of \$700. The city will also pay \$1,500 as its share of the building.

The city will obtain information on water flow in connection with the disposal plant, future bridges, etc. The government will use the data in working out a flood control program for the Rouge drainage area.

Roll Call

(Continued from Page One)

a large thermometer will be erected at the northwest corner of Woodward and Maple where citizens can watch the day-to-day progress of contributions throughout the campaign.

Checks Can Be Mailed
"This year," said Turner, "we are concentrating especially on the Birmingham businessman's contribution. We would like to double the amount donated by this group in other years."

"I might add," continued Turner, "that the cooperation of businessmen thus far has been most gratifying and much more favorable than in other years."

Anyone wishing to make a contribution by mail may send his donation to the Community House. Checks or money orders should be made payable to the Birmingham Community House.

Classified ad deadline is 5 p.m. each Tuesday.

FOR A GOOD JOB OF ADVERTISING, call J.O.B. BUCKENBROG & ASSOCIATES 3000 EAST GRAND BOWLINGWAY - DETROIT 2

DON'T MESS WITH GARBAGE!

Waste King PULVERATOR
"KING OF THE KITCHEN"

Does the Work for You!
Powerful "Drain-Away Action" pulverizers and flushers every bit of waste particles down the drain within seconds. Easily installed.

balcky Pen?
being this Today!
Fast Reliable Service

THORNTON & GROOMS
PLUMBING AND HEATING
1728 W. Maple at Chesterfield
Phone 288

EVERYONE'S RUSHING TO SEE THE MARTIN-SCHWAB COLOR BAR

1000 COLORS IN PAINT
Now, enjoy the blended color scheme you've dreamed about . . . from 1000 colors in paint at the Nu-Hue Color Bar. Match your color sample, too, with prescription-mixed colors which dry on the wall to exactly the shade selected. Come see this thrilling array of 1000 interior colors . . . today!

MASKILL HARDWARE
4400 WOODWARD
Just a Few Blocks South of 14 Mile Rd.
PHONE LINCOLN 2-4700
Ample Parking Space Available



NEW HORIZON SHAPES UP—This workman, high above Franklin D. Roosevelt Drive in New York, on the 42-story UN Secretariat Building, has to himself a view which will soon be admired by world planners. The Empire State Building dominates the view.