

**Community House Is
Setting for Recital**

Eugenia Stepowska Panikof, Helenina and Paul Panikof, pianists, will present their pupils in an evening of dance and piano at the Birmingham Community House this evening, 8:30 to 10:30.

The ballet pupils presented will be Patricia Landry, Christina Borchert, Maud Cooper, Sarah Reed, Annelise Snyder, Linda Gray, Carroll Crawford, E. L. A. L. Campbell, Karen Gilray, Betsy Giley, Dana Vasey, Janet Brooks, Ann Alexander, Elizabeth Ketchum, and Joby Fredericksen.

Among the pianists will be William McFarland, Mary Falvey, Elizabeth Olanston, Katherine Olanston, Barbara Commons, Richard McClure, Gerald Priebe, Bertram Stillman.

Panikof, a concert pianist, was formerly musical director for the Russian Ballet Theatre's International Dance Festival in the Berkshire Mountains. He received musical training at the Juillard School of Music in New York City.

**Vets Must Reenlist
Before July 1 to
Keep Some of Rating**

World War II veterans who wish to re-enlist in the Army and retain at least part of the rank they held at time of discharge will have to enlist before July 1, it was announced today by Sgt. Robert W. Wiley, local Army and Air Force recruiting official.

After July 1, returning veterans after May 12, 1946 as officers or warrant officers will be enlisted in grade E-4, corporal. Those who served in the top non-commissioned grades during the war can expect enlistment in grade E-5, private first class.

Since present regulations allow veterans to enlist in higher grades, local recruiting officials are urging veterans to take advantage of the higher grades now offered to those who enlist before the end of this month.

**Rotarians Hear Talk
on Medicine's Part
in Atomic Defense**

Dr. James Clark Moloney, well-known Birmingham physician, spoke at the Monday meeting of the Rotary club on "Medicine in Atomic Defense."

Dr. Moloney said if one knows what to expect and how to cope with it and the few victims will be lessened.

"The three main causes of death in the atomic bombing of Japan were infrared burns, contamination and radioactivity. With the two first causes, greatest number of deaths," he said.

"It has been found since these bombings that the safest place to be during an atomic bomb attack is behind a concrete, iron or steel barrier."

The medical profession, he pointed out, is constantly working toward curative measures for atom victims.

News copy submitted early necessarily is given preference over late items. The "early bird" usually gets the space.



RED GOES WEST—One of many Communist youths taking refuge in West Berlin, afraid of Red reprisals if they return to their homes in Eastern Germany, appears to enjoy a taste of freedom after his escape. He is behind the Iron Curtain. Though still wearing the blue uniform shirt of the Communist Youth Organization, he has ripped off the insignia and wears American tie and necktie, gift of the U.S. Red Cross.

**It's Dairy Month! Come to A&P for
A GREAT VARIETY OF
CHEESE**

(and Dozens of Other Dairy Delights!)

No question about it... when it comes to cheese, there's a big difference in tastes. And it takes a big variety to satisfy them all. Has A&P's Dairy Department got what it takes? You said it! Might as well try to count the holes in a Swiss cheese as the cheeses in A&P's refrigerated cases! But you can take our word for it... there are more than 80 different kinds... all marked with dollar-stretching prices. Come find your favorites! And get plenty of other grand dairy values here, too!

- Mild Cheddar Cheese Wisconsin Lb. 41c
- Sharp Cheddar Cheese New York Lb. 65c
- Mild Frankenmuth Cheese Lb. 49c
- Frankenmuth Cheese Medium Sharp Lb. 55c
- Wisconsin Sharp Cheddar Year Old Lb. 59c
- Chunk-O-Gold Sharp Cheese Spread 8-oz. Pkg. 35c
- Sliced Swiss Cheese Wisconsin Lb. 69c
- Imported Swiss Cheese Nutty Flavor Lb. 11c
- Cream Cheese Philadelphia or Eagle Brand 3-oz. Pkg. 2 For 29c
- Mel-O-Bit Sliced Processed American Lb. 49c

- Wisconsin Blue Cheese Sharp Lb. 69c
- Imported Danish Bleu Cheese Lb. 89c
- Imported Roquefort Cheese Lb. 1.29
- Port-Du-Salut Cheese Zesty Flavor Lb. 69c
- Gorgonzola Rich, Spicy Flavor Lb. 73c
- Italian Type Romano Lb. 99c
- Gouda Cheese Rich, Mild Lb. 67c
- Kuminast Caraway Seed Lb. 69c
- Liederkrantz Mellow, Ripe 4-oz. Pkg. 35c
- Aged Braumeister Lb. 57c
- Ched-O-Bit Cheese Food American 2 Lb. 69c
- Sunnybrook Large Eggs Grade "A" Dozen in Ctn. 47c
- Sunnyfield Butter Quarters Lb. Ctn. 68c

**Jane Parker Marble Iced
DEVIL'S
FOOD
LOAF CAKE**

A delicious Summer dessert treat. **35c**

- Fresh Banana Layer Cake 8-inch Each 69c
- Marvel White Bread 20-oz. Loaf 15c
- Potato Chips Jane Parker Lb. Box 59c
- Dinner Rolls Marvel 9 in Pkg. 10c
- Nut Filled Ring Danish Coffee Cake Each 39c
- Fresh-Baked Pies Jane Parker Each 39c

**A&P's Close-Trimmed
RIBS OF BEEF**

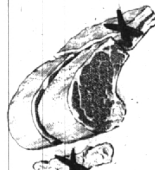
Cut From Heavy Rib Beef Lb. **79c**

A&P's close-trim removes the tip of the chine bone, the blade ribs and short ribs, which are sold at a lower price per pound.

**Cut From Tender, Young Porks
Pork Loin Roast**

Rib End Lb. **39c**

- Center Loin Lb. 83c
- Whole Loin Lb. 59c
- Fresh Fryers Fully Drawn Lb. 59c
- Skinless Frankfurters Lb. 59c
- Whole Smoked Hams Lb. 53c
- Smoked Picnics Lb. 47c
- Hormel Canned Hams 6 1/2 Lb. Can 6.49
- Center Cut Pork Chops Lb. 83c
- Leg O' Veal Milk-Fed Tender Lb. 57c
- Thuringer Summer Favorite 1/2 Lb. Pkg. 37c
- Beer Salami 1/2 Lb. Pkg. 37c
- Pan-Ready Whiting Lb. 15c
- Haddock Fillets Lb. 45c
- Dressed Smelts Wheatley's Frozen Lb. Pkg. 45c



**CALIFORNIA LONG WHITE
POTATOES 15 Lb. Pkg. 65c**

- Sweet Corn Golden Bantam 6 Ears 49c
- Crisp Green Beans Black Valentine Lb. 17c
- Golden Ripe Bananas Lb. 16c
- Sweet Ripe Bing Cherries Lb. 39c
- Fancy Cucumbers 3 For 17c
- New Green Cabbage Lb. 5c
- Santa Rosa Plums Lb. 29c
- Sweet Seedless Grapes Thompson Lb. 39c
- New Yellow Onions 3 Lbs. 25c

Perfect with Summer Beverages
**Crisp Salted
Spanish Peanuts**

Everybody Enjoys the Fresh, Crisp Peanuts Serve 'Em Often! Lb. Cello Bag **35c**

- Wash Everything With **Swan Soap** Regular-size 3 For 23c
- Fast Acting, Quick Suds **Breeze** Lge. 25c
- Really Works, Really Cleans **Gold Dust Powder** 3 1/2-oz. Page 23c
- Won't Harm Colors **Chiffon Flakes** Lge. 25c



Customers' Corner

Are you having any checkout trouble at your A&P?

When we first started our Customer Relations Department, we received more comments about delay at the checkout stands than anything else.

We've worked hard since that time to give you the kind of checkout service you want.

Are there enough stands to care for all our customers promptly? Are the checkers efficient, accurate and courteous, as they should be?

If there's anything further we can do to make this final part of your shopping trip more convenient, please write to us at:

Customer Relations Department,
A&P Food Stores,
420 Lexington Avenue
New York 17, N. Y.

**For Big Savings . . . Get A&P's
GROCERY BUYS**

Sultana California **Fruit Cocktail** 29-oz. Can **29c**

Cold Stream Alaska **Pink Salmon** Lb. Can **35c**

- Sure Good Margarine Lb. Cpl. 2 For 45c
- Bib Orange Juice For Babies 6-oz. Can 3 For 29c
- Monarch Brooms Each 97c
- Large Hershey Bars 2 For 29c
- Recipe Marshmallows 10-oz. Bag 2 For 33c
- Florida Slices Worthmore Lb. Box 23c
- Candy Bars 52 Varieties 6 For 25c
- Chewing Gums Popular Varieties 6 For 19c
- Ball Glass Jars Vacuum Seal Pints 12 In. Ctn. 69c
- Sure Jel for Perfect Jellies 2 1/2-oz. Pkg. 2 For 25c
- Jelly Glasses 1/2 Pint 12 In. Ctn. 47c
- Kellogg's Corn Soya 8-oz. Pkg. 15c
- Assorted Cereals Betty Crocker Tray 10 In. Pkg. 33c
- Sunnyfield Wheat Puffs 4-oz. Pkg. 2 For 15c
- Wrigley's Charcoal 8-Lb. Bag 25c
- S.O.S. Scouring Pads 10 In. Pkg. 23c
- Drano for Clogged Drains 15-oz. Can 22c
- Baker Maid Saltines 4 in 1 Pkg. Lb. Pkg. 26c
- Halters Pretzel Stix Lb. Pkg. 23c
- Iona Apricots Halves, Unpeeled 29-oz. Can 21c
- Dwan's Blueberries Heavy Syrup 15-oz. Can 23c
- Elberta Peaches A&P Home Style 29-oz. Can 39c
- Sparkle Desserts Assorted, 3-oz. Pkg. 3 For 17c
- Sultana Pineapple Sliced 29-oz. Can 27c
- Ann Page Grape Jelly 15-oz. Glas 19c
- Shedd's French Dressing 9-2-Y Mix 16-oz. Bot. 37c
- Agars Lunch Meat 12-oz. Can 33c
- Whole Chicken College Inn 3 Lbs., 2-oz. Can 1.39
- Master Mustard Qt. Jar 17c
- Stuffed Olives-Sultana Small-Refrigerator Jar 10 1/2-oz. Jar 55c
- Paper Napkins Blue Ribbon 30 in Pkg. 10c
- Waldorf Tissue 4 Rolls 27c
- Sultana Peanut Butter 16-oz. Jar 49c
- Dandy Dill Pickles Qt. Jar 19c
- Stokely's Catsup 14-oz. Bottle 2 For 37c
- Our Own Tea Bags For Iced Tea 48 in Pkg. 39c
- Iona Tomatoes 20-oz. Can 2 For 25c
- Cream Style Corn Iona Golden 18-oz. Can 10c
- Jumbo Sweet Peas Libbys 17-oz. Can 2 For 29c
- Tomato Juice Air Line 46-oz. Can 2 For 39c
- Orleans Dog Food All Meat Lb. Can 2 For 33c

- Plum Raisin Raisin 12-oz. Jar 37c
- Plum Raisin Raisin 12-oz. Jar 37c
- Plum Raisin Raisin 12-oz. Jar 37c

- Plum Raisin Raisin 12-oz. Jar 37c
- Plum Raisin Raisin 12-oz. Jar 37c
- Plum Raisin Raisin 12-oz. Jar 37c

- Plum Raisin Raisin 12-oz. Jar 37c
- Plum Raisin Raisin 12-oz. Jar 37c
- Plum Raisin Raisin 12-oz. Jar 37c

- Plum Raisin Raisin 12-oz. Jar 37c
- Plum Raisin Raisin 12-oz. Jar 37c
- Plum Raisin Raisin 12-oz. Jar 37c

- Plum Raisin Raisin 12-oz. Jar 37c
- Plum Raisin Raisin 12-oz. Jar 37c
- Plum Raisin Raisin 12-oz. Jar 37c

- Plum Raisin Raisin 12-oz. Jar 37c
- Plum Raisin Raisin 12-oz. Jar 37c
- Plum Raisin Raisin 12-oz. Jar 37c

- For Parties and Lunches **Armour's Treet** 15-oz. Can 39c
- Armour's Offer **Beef Stew** 15-oz. Can 39c
- Beef Hash** Both Cans 57c
- Armour's Tasty **Vienna Sausage** 4-oz. Can 20c
- Armour's Star **Deviled Ham** 2 1/2-oz. Can 19c
- Armour's Delicious **Roast Beef** 15-oz. Can 47c
- Make Grand Cookies **Nestle's Morsels** 6-oz. Pkg. 19c
- A Penn French **Dry Cleaner** Gal. Can 95c
- Butter Kernel **Golden Corn** 2 12-oz. Cans 29c
- Assorted Flavors **Kre-Mel Puddings** 3 4-oz. Pkg. 23c
- Great for Fried Foods **Crisco** Lb. Can 31c, 5-Lb. Can 85c
- Fortified With Liver **Dash Dog Food** 2 16-oz. Cans 25c
- Halm-3 Varieties **Baked Beans** 2 16-oz. Cans 29c
- Veter Homogenized **Peanut Butter** 16-oz. Jar 37c
- Glasses Really Sparkle **Dreft** 16-oz. Pkg. 25c, Giant Pkg. 67c
- For Every Washing Need **Tide** Lge. 25c, Giant Pkg. 67c
- Try It for Your Wash **Duz** Lge. 25c, Giant Pkg. 67c
- Gentle to Your Skin **Woodbury's Soap** Bath Size 10c
- Mild, Easy on Clothes **Lux Flakes** Lge. Pkg. 25c
- Pleasant, Cleansing **Lifebuoy Soap** Regular-size 4 For 29c
- Delightful, Fragrant Scent **Lux Toilet Soap** Regular-size 4 For 29c