

**Final Meeting of Altar Society to be Held Wednesday**  
The final meeting of the year

of the Holy Name Altar Society will be held Wednesday, June 7, at 12:30 o'clock and will be a pot-luck luncheon at the Birmingham road residence of Mrs. Carson Birmingham.

Members of St. Veronica's Guild will be hostesses with Mrs. Richard R. Hindley as general chairman. Assisting her are Mrs. Joseph Beckley, Mrs. Anthony D'Agostino, Mrs. M. D. Lucas, Mrs. Walter L. Connelly, Mrs. Charles Obermeyer and Mrs. Donald Babbitt.  
A program has been planned for the afternoon.

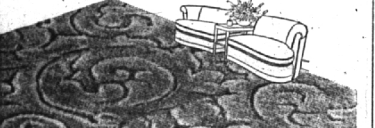
**APTITUDE TESTS**  
enable YOU to learn the kind of work YOU can best succeed in, or the kind of studies YOU should follow. (For men and women, boys and girls.)  
**VOCATIONAL COUNSELING INSTITUTE**  
Daniel L. Berg, Director  
956 Macomber Bldg., Temple 1-1551  
Woodward near Warren

# CARPETS

## Castella

\$8.95 Sq. Yd. Carved Broadloom

Firth's Castella is a magnificent new carved broadloom carpet in the popular price range. Its carved effect is achieved through two heights of virgin wool pile, the lower one reinforced by Firth's vinylizing process. We cordially invite you to see this magnificent new Firth creation.



Firth's CASTELLA—Scroll design. A classical scroll medium scale effect in desert beige, forest green, pewter grey and persian rose.

**Harold B. Brown**  
—CARPETS and RUGS  
2863 WOODWARD  
Between 11 and 12 Miles Rd.  
BERKLEY  
Lincoln 2-9595  
DIVIDED PAYMENTS IF DESIRED  
Open Monday, Thursday, Friday Evenings Until 9 P.M.

## Annual Girl Scout Penny Drive Scheduled for Saturday, June 3

Keep your eye on the line while you reach in your pockets for some coins for the Girl Scouts. For next Saturday, June 3, will be the eleventh annual Penny Drive of Birmingham Girl Scouts when they attempt to line up a "mile of pennies" for the maintenance of their cabin at Springdale Park.

The tapes on which contributions will be placed will be on the sidewalks at the four corners of Woodward and Maple, stretching along the north side of Maple west as far as the Wabek Building; on the north side of Maple west to LaBelle; on the west side of Woodward from Burr's to Mc Bride's Hardware; and on the east side of Woodward from the National Bank south to Davidson's.

THERE WILL also be tapes in front of Kroger's, A. & P. Store, Campbell's Village Store and Horvath on Pierce Street. These tapes have been made available by Ralph Struck.

Headquarters for the adults assisting with the Penny Drive will be a desk on Maple at the Wilson Drug Store, where members of the Birmingham Girl Scout Council will make change, give information and receive reports.

WE SPECIALIZE IN CUSTOM PICTURE FRAMING  
Fast Delivery  
Gail Bigger INTERIORS  
6425 Telegraph Rd. near Maple  
Bham 3501

HERBERT BEAN, D.S.C. wishes to announce the opening of an office for the practice of CHIROPODY  
295 N. Hunter Blvd. Bham 1503  
Wed. & Sat. by appointment

**The Line Is Busy**  
BY DONIS E. KUS

This column's "phone" has been disconnected for the next two issues as yours truly is taking off to get married Saturday and to have a week's vacation up in Canada. Expect to be back on June 12 with the new name of Mrs. James K. Allen.

**COMMUNITY HOUSE CALENDAR**  
Thursday, June 1  
1:00 p.m.—Newcomers Bridge  
6:00-7:30 p.m.—Family Dinner (On Reservation)  
6:45 p.m.—Business Women's Dinner  
8:00 p.m.—Reserve Officers Ass'n Ladies  
8:00-11:00 p.m.—21-35 Club

## GIRL SCOUTS

The number of Intermediate Girl Scouts in Birmingham is being increased almost every day by the addition of new Girl Scouts who have just flown up from Browniehood.

One of the most recent Fly-Up ceremonies was that of Troop 26 at Pierce school, which was held last Wednesday, May 24. Guests at this ceremony were the girls' mothers, their fourth grade teachers, and their third grade teachers who saw them start as Brownies.

Flag bearers were Carol Thomas and Sue Purvis, while the color guard was composed of Marilyn Cook and Calla Reardon. Karen Keene was mistress of ceremonies. Troop committee members Mrs. Robert Brierly, Mrs. Fred Clements and Mrs. Kenneth Green served punch and cake following the ceremony.

The last meeting of the year will be a cook-out June 7 at Ann Fortune's home on Lahser road, when these newly elevated Girl Scouts will practice trail laying in the woods.

## "Family Portrait" Chosen by St. Dunstan's Guild

As its annual outdoor production St. Dunstan's Guild of Cranbrook has selected "Family Portrait" by Lester Coffee and William Joyce Cowen. It will be presented in the Greek Theatre at Cranbrook for four performances, from Thursday through Sunday, June 15, 16, 17 and 18.

eloquent and reverent picture of the family of Jesus. Taking for its theme the first few verses of the sixth chapter of St. Mark, "A prophet is not without honor, but in his own country, and among his own kin, and in his own house," the story is told in terms of an ordinary family which acts and speaks in an almost contemporary vein.

Previous Guild productions in the Greek Theatre, one of the most unusual of theatrical settings, have included "Our Town," "Jacob and the Colonel," and the original musical play, "The Barkers," which was presented last year.

The focus of the play is on Mary, the mother, and the other members of her family and their reactions to the ministry of Jesus, who does not appear in the play. Mrs. B. McMechan and Thomas King are directing the production, with Mrs. Hugh Hitchcock acting as production manager and Walter Bromley as stage manager.

"Family Portrait" is a simple, elegant and reverent picture of the family of Jesus. Taking for its theme the first few verses of the sixth chapter of St. Mark, "A prophet is not without honor, but in his own country, and among his own kin, and in his own house," the story is told in terms of an ordinary family which acts and speaks in an almost contemporary vein.

The focus of the play is on Mary, the mother, and the other members of her family and their reactions to the ministry of Jesus, who does not appear in the play. Mrs. B. McMechan and Thomas King are directing the production, with Mrs. Hugh Hitchcock acting as production manager and Walter Bromley as stage manager.

**COMMUNITY HOUSE CALENDAR**  
Thursday, June 1  
1:00 p.m.—Newcomers Bridge  
6:00-7:30 p.m.—Family Dinner (On Reservation)  
6:45 p.m.—Business Women's Dinner  
8:00 p.m.—Reserve Officers Ass'n Ladies  
8:00-11:00 p.m.—21-35 Club

Up from San Francisco, Calif. for a few days last week was Fritz Hyde, Jr., formerly of Birmingham.

**COMMUNITY HOUSE CALENDAR**  
Friday, June 2  
10:30 a.m.—Needlework Club Board Meeting  
Saturday, June 3  
10:00 a.m.—Business Meeting Children of American Revolution  
12:30 p.m.—Luncheon Children of American Revolution  
Monday, June 5  
12:00 noon—Rotary Club Luncheon  
3:45 p.m.—Girl Scout Meeting  
6:30 p.m.—Hi-12 Dinner  
7:30 p.m.—Girl Scout Meeting  
8:00 p.m.—V.F.W. Meeting  
8:00 p.m.—V.F.W. Auxiliary Meeting  
8:00 p.m.—United Foundation Meeting  
8:00 p.m.—Community Council Board—Old and New  
Tuesday, June 6  
10:00 a.m.—Community Council Youth Committee  
12:00 noon—Exchange Luncheon  
6:30 p.m.—Kiwanis Club Dinner  
7:15 p.m.—Spring Sports Banquet  
8:00 p.m.—Pythian Sisters  
8:00-11:00 p.m.—21-35 Club  
Wednesday, June 7  
12:30 noon—Lions Luncheon  
7:00 p.m.—Senior Dinner  
7:30-9:30 p.m.—Sea Scouts  
8:00 p.m.—Duplicate Bridge  
Thursday, June 8  
10:00 a.m.—Social Service Index Study

**BIRTHS**  
Mr. and Mrs. Gerald M. Dick of Denver, Colo., announce the birth of a son, David Kenneth on May 3. Mrs. Dick is the former Martha Fox.  
Lt. and Mrs. Patrick Kimball of Fort Knox, Ky., announce the birth of a son, David Kenneth on May 27. Mrs. Kimball is the former Suzanne Hicks.

**ADDING CHARM TO Your Home**  
By Bill Wieland

**WELCOME STRANGER**  
The guest room has long been the symbol of gracious hospitality, and certainly a tradition which we wish to sustain whenever possible. However, as the youngsters in the family grow up and their interests widen the demand for more usable space in the home becomes increasingly insistent and the room set aside for occasional overnight guests must be utilized for other purposes.  
The sketch above shows how a small guest bedroom has been converted into a versatile secondary dining room where family members may find secondary to read, study, write. A place to entertain, a perfect place to entertain a small intimate gathering of friends. Two studio couches which open into full-sized beds for sleeping, and a triangular corner table have been arranged to conserve space. Couches have concealed drawers to store blankets and bedding.  
Twin chests at each side of knee-hole desk add wall interest for more usable storage space.  
Now the room has become a double-duty room, making a daily contribution to family comfort. It can still serve, when occasion demands, as a charming, hospitable guest room.  
We have many ideas that will prove to be successful answers to the under-sized housing problem. Come in, let us tell you about them.

**Beverly Grier is Engaged to marry**  
At a tea in their Fairfax avenue residence last Saturday afternoon, Mr. and Mrs. James Allister Grier revealed the betrothal of their daughter, Beverly to William E. Douglas. He is the son of Mr. and Mrs. Morgan D. Douglas of Bloomfield Hills.  
Miss Grier was graduated from Stuart Hall at Staunton, Va., and the University of Vermont where she was affiliated with Pi Beta Phi sorority. Mr. Douglas attended the University of Southern California and the University of Michigan and is a member of Sigma Phi Epsilon fraternity.

**WELCOME STRANGER**  
The guest room has long been the symbol of gracious hospitality, and certainly a tradition which we wish to sustain whenever possible. However, as the youngsters in the family grow up and their interests widen the demand for more usable space in the home becomes increasingly insistent and the room set aside for occasional overnight guests must be utilized for other purposes.  
The sketch above shows how a small guest bedroom has been converted into a versatile secondary dining room where family members may find secondary to read, study, write. A place to entertain, a perfect place to entertain a small intimate gathering of friends. Two studio couches which open into full-sized beds for sleeping, and a triangular corner table have been arranged to conserve space. Couches have concealed drawers to store blankets and bedding.  
Twin chests at each side of knee-hole desk add wall interest for more usable storage space.  
Now the room has become a double-duty room, making a daily contribution to family comfort. It can still serve, when occasion demands, as a charming, hospitable guest room.  
We have many ideas that will prove to be successful answers to the under-sized housing problem. Come in, let us tell you about them.

News and society copy must be in The Eccentric editorial office by 4:30 each Tuesday afternoon.

**Wieland's Interior Furnishings**  
625 N. Woodward  
Birmingham 960

# Yours - all yours -

**FOR ONLY \$1911.36 DELIVERED**  
Optional equipment, state and local taxes, if any, additional. Prices may vary slightly in other communities due to shipping charges. Prices subject to change without notice.

Here's where you come into your own. For this roomy six-passenger Sedanet is the lowest-priced family-model Buick and the easiest to buy. But it has all the basic qualities that make every Buick a standout.

**ONLY BUICK HAS Dynaflow—**  
AND WITH IT GOES! HIGHER-COMPRESSION Five-valve-in-head power in three engines. (New I-263 engine in SUPER models.) NEW-PATTERN STYLING, with MULTIPLE GUARD fenders, spoke-through fenders, "double bubble" headlights • WIDE-ANGLE VISIBILITY, clear-up road view both forward and back • TRAFFIC-HANDY SIZE, less overhang • EXTRA-WIDE SEATS cradled between the color-rod • SOFT BUICK RIDE, from off-coil springs, Safety-Ride tires, low-pressure tires, ride-steady torque-tube • WIDE ARRAY OF MODELS with Body by Fisher.

Unmistakable smartness, for instance, in its tapering fenders and money-saving Multi-Guard front end.  
A bonnet full of Fireball straight-eight power that spells thrills with real thrif. Matchless Buick ride compounded of coil springs on all four wheels, ride-steady torque-tube, low-pressure tires and Safety-Ride rims.  
You can even have Dynaflow Drive\* if you like—the first non-shifting transmission in which oil does it all.

But here's the point:  
It doesn't cost a cent—doesn't obligate you in any way—to check all this—to try this Buick out. All you have to do is ask—and your Buick dealer will sit you behind the wheel—let you try this traveler through its paces—show you precisely how little it will cost you to step up to a Buick.  
You'll never know what you are missing until you try a Buick. Come in, won't you—right away?

WHATEVER YOUR PRICE RANGE  
**"Better buy Buick"**  
\*Standard on Four-cylinder. Optional at extra cost on Six-cylinder models.  
Tune in HENRY J. TAYLOR, ABC Network, every Monday evening.  
YOU KEY TO GREATER VALUE

**SUMNER MOTOR SALES, Inc.**  
808 S. WOODWARD  
PHONE 1300  
WHEN BETTER AUTOMOBILES ARE BUILT BUICK WILL BUILD THEM

**LEWIS**  
Fine Furniture  
235 PIERCE ST. PHONE 5111  
Pontiac Store 62-70 South Saginaw Street, Pontiac