

General Manager

Edward E. Rothman of Linden avenue, vice-president of Camp-

bell-Ewald, advertising agency, was named general manager of the firm recently. He has been with the company for 14 years.

QUARTON CAPE COD



1722 Pine Street

So New England you can see its counterpart around the shores of Falmouth harbor or Woods Hole! Ideally located . . . only a step from Quarton School . . . a larger than average lot, white fenced and facing South . . . sunshined, light and cheerful around the clock.

A center entrance hall . . . Living Room 13½ by 22 with paneled fireplace wall and adjoining porch . . . Dining Room with windowed bay . . . compact, efficient Kitchen . . . extra Lavatory . . . attached car garage.

You'll like these generous Bedrooms . . . two of them oversize 13½ by 20 and 12 by 16½ . . . the third 9 by 11 . . . and the Bath with tub shower . . . and a huge storage closet for luggage, linens, etc.

Play area in the basement . . . oil air conditioned . . . taxes only \$250 annually. 93 by 125 foot lot . . . fenced and beautifully planted . . . a separate fenced kennel for the dog (the dog house is insulated, too!

Possession easily arranged . . . and a price you can afford to pay. Building costs are rising again . . . let's see this attractive home today!

CALL

MAX BROOCK INC.
REALTORS
ESTABLISHED 1936

300 S. Woodward

Birmingham 1212

Make your winter vacation more carefree—let

THE HOME SAFETY CHECK SERVICE

be your caretaker while you're away! A daily inspection of your property will assure you peace of mind while you relax in pleasanter climes.

Call

GEORGE M. MARKLEY

Selected Real Estate

460 West Maple

Birmingham 5005

MORE Than Just Another Colonial



(West Bloomfield-Vaughan and Hickory Grove Schools)

This well designed Colonial overlooking rolling country fine has the architectural appeal dear to the heart of every home lover.

A brief summary of the interior:

FIRST FLOOR—Wide entrance hall. Living room with pine paneled fireplace—wall with book shelves. Dining room has built in corner cabinet. Breakfast room. Modern kitchen. Rear stairs. Lavatory.

SECOND FLOOR—Four fine bedrooms and 2½ baths. Entrance to large floored storage space over the two car garage.

BASEMENT—Oil steam heat. Water softener. Incinerator. Lavatory. Deming Pump.

Here is a definite feeling of value—excellent construction—charm of living and low taxes (\$115.00 a year).

\$22,500.00

WALSH, JAMES & WASEY Co.

Realtors

431 So. Woodward Ave.

Birmingham 4900

Bits of Birmingham

Not quite as welcome as the robins and the blue birds, but nevertheless harbingers of more pleasant weather to come are the mourning doves and blue jays. During the past week this Wanderer was pleased to notice several of these feathered friends around town. Hope their feed supply doesn't get buried under another foot or so of snow.

According to an announcement from the University of Michigan, Baldwin high school is one of the 59 schools still in the running for the state debating title. As a member of district seven, the Maples face competition with schools from L. A. n. s. g. Flint, Swartz Creek, Holt, Milford and Hazel Park in the near future. The finals, to decide on the state champion, are to be held at the university on April 28.

In the last few days, Birmingham has twice seen the rather rare operation involved in the

moving of large buildings. First, the next to the last of the Poppleton Park guest hut was seen Friday by this Wanderer as truck, trailer and quonset rolled south on Woodward Ave. This was followed by the somewhat startling sight of seeing two multiple dwelling, two-story wooden structures occupying the entire width of Brown St., between Henrietta and Bates. The work involved in placing these buildings on foundations and completing their super-structures is already attracting many "side-walk superintendents".

We understand there is one family in Birmingham which will be very happy to see the coming weekend fade away into the past. It seems there are two sons in the family, both of whom are showing great anxiety about what temperatures will prevail between now and Saturday and on that fateful day, itself. They want, with all their hearts, to get into that ice

carnival at Quarton lake, and since the weatherman has poured buckets of rain on every winter plan, they are keeping things humming at home, calling the weather bureau in Detroit and groaning every time the voice mentions the word "warmer".

A local lady, who is deeply interested in hospitalized veterans, made a suggestion to this Wanderer a short time ago, regarding greeting cards. With Valentine's day so near, the idea came back to our mind. Her suggestion was this: There are many of us whose families have, through the passage of time, lost many members. As holidays roll around these persons find themselves a bit lost with so few cards to send. "Why not," she said, "get names and addresses of men in service hospitals who have few relatives to remember them at the holidays, and include them on your card lists?" Of course, there's not much time now to do this, but there are numerous gifts which could be sent to hospitals to be distributed to these men and brighten their lives at least for one day.

The Disabled American Veterans, South Oakland chapter No. 19, is making sure it will be able to sell its forget-me-nots in Birmingham this year. Monday night

it obtained city commission permission to hold its annual sale in Birmingham on Sept. 15 and 16. "Advance reservations" for such street sales in Birmingham are a must, since the city commission has a policy of not permitting more than one such event each month.

That new city load packer for rubbish has resulted in a number of phone calls to city offices complaining that "it went right by and didn't pick up my garbage." Henry Johns, city health inspector, hastens to explain that the load packer is for rubbish pickup from the business section only. "The city truck is orange," Johns emphasized. "The garbage truck of the Veterans Disposal Service is

silver. So if the orange truck drives by without stopping, don't worry. But if the silver one passes you by, then that is the time to give us a call."

The Boy Scouts of America are now observing the 40th anniversary of their founding. In line with this celebration, this Wanderer got to wondering if there were any man in this area who became a scout during its first year? Maybe there are several of

them. Anyone help us to get a line on them?

According to a lot of people, crossing the intersection of Maple and Telegraph roads is a danger to life and limb. This Wanderer, out for a little drive in Saturday's lovely sunshine, found the danger applies to more than that. A lady, turning the corner at a fairly fast speed, had two baskets of freshly washed clothes spill from the car. (Continued on Page 3, Part 2)

MORTGAGE LOANS

Benefit by our experience in working out the mortgage plan that best answers each family's needs. Whether you have an old-fashioned straight mortgage to refinance—or plan to use your rent payments to buy or build a home, we have a plan perfectly designed to meet your problem.

BIRMINGHAM FEDERAL SAVINGS AND LOAN ASSOCIATION

Woodward at Maple
Phone 1040
Member of Federal Home Loan Bank System and Federal Savings & Loan Insurance Corporation

INSURANCE - BONDS
THE BIRMINGHAM AGENCY
CHAS B RANDALL
OSCAR P PETERSON
Insurance for Every Need
PHONE 840
1065 WOODWARD BIRMINGHAM

QUALITY is not Expensive

MAY WE ESTIMATE ON YOUR PLANS OR OURS?

HIGHLAND BUILDING CO.

"Charming Homes Built to Order"
PHONE J. W. RATTNER
B'ham 3388 — 139 West Maple
P. S. Two models now under construction can be duplicated—4 bedrooms, 2 baths, dishwasher and disposal, storms and screens.

It's True . . .

\$13,500.00 buys this lovely Dutch Colonial Home.

- Fresh and Clean. Attractively decorated.
- 3 bedrooms.
- Living room (20 x 14), natural fireplace.
- Full 12 x 13 Dining room.
- Gas Heat.
- Disposal.
- Chamberlain storms and screens.
- Garage.

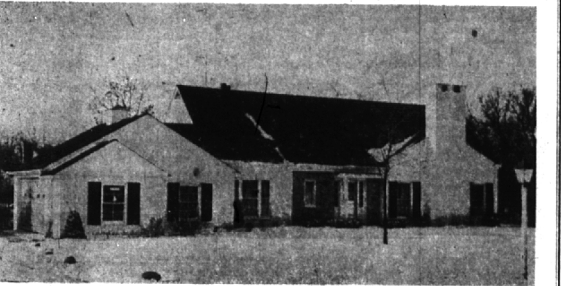
Don't delay . . . See it today.

SNYDER KINNEY & BENNETT
INC
Realtors

239 S. Woodward Birmingham 1400

FOXCROFT

An Address of Distinction in Bloomfield



4205 Valley Forge

1948 Built . . . an Elegant Home in perfect condition in an exceptional setting . . . overlooking the ravine and trees . . . custom built to owner's exacting specifications.

Living room . . . Dining room . . . Library, Breakfast Nook, superb kitchen, lavatory on first and a large Screened Porch. Three fine Bedrooms and two Baths on the second.

Built on over one-half acre, far back from the main road . . . and yet accessible to transportation . . . nicely landscaped.

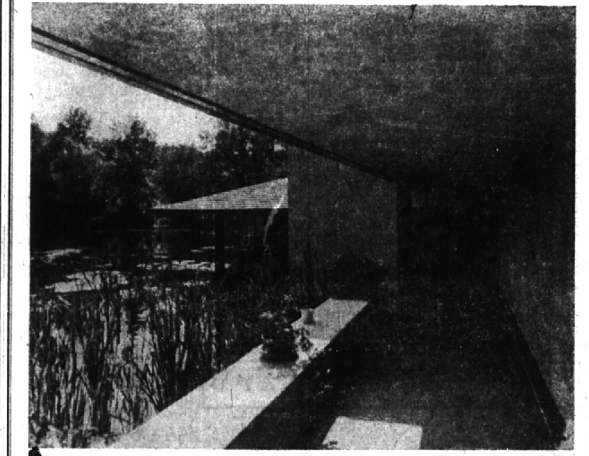
Inclusions: Beautiful carpeting throughout, except Library . . . all Drapes . . . GE Dishwasher . . . and yes, the taxes are only \$181.00 per year.

Here is the perfect home for the family wanting country living, yet close to schools and to Birmingham.

BENJAMIN and STEPHENS, INC.

239 S. WOODWARD — Realtors — BIRMINGHAM
Birmingham 4129 J.ORDAN 4-6387

BEYOND QUESTION . . .



THE MOST DISTINCTIVE HOME IN BLOOMFIELD HILLS! On Orchard Ridge Road, overlooking a private lake, you'll find the finest example of contemporary architecture in the area. Both "Life" and "Town & Country" have singled it out as a masterpiece of modern design.

The beautifully executed interior features a studio living room (18x27) with large windows at lake level; a games room (14-30) with fireplace, master bedroom (15x22) with a solid wall of wardrobes and adjoining Carrara Glass bath, two other bedrooms and bath, dining room (16x18), and G.E. stainless steel kitchen are at ground level. There is also a separate guest suite with dressing room and bath, a glassed, heated conservatory, and servant's quarters.

The grounds, 3½ acres with lake frontage, are ideal for outdoor activities. Vaughan and Cranbrook schools are only a short distance away. Quality, environment, and livability are prime factors here!

Shown By Appointment Only

GEORGE W. MARKLEY

Selected Real Estate
460 West Maple Birmingham 5005