

When an individual makes a mistake in his own affairs, he may be criticized but seldom is condemned. When a public official makes too many mistakes, he is both criticized and condemned. That is the very human nature handles its transgressors.

The Birmingham Eccentric

PART 5

Thursday, December 14, 1950

RALPH A. MAIN
CIVIL ENGINEER and
SURVEYOR
Subdivision Design and Layout
Certified Lot Surveyor
255 Thieria, Birmingham
Phone MI 4-2214

Proposed Alley From Frank to George Under Consideration

A preliminary hearing has been set for Jan. 8 to determine advisability of creating a special assessment district for the acquisition of right-of-way for a proposed alley extending from Frank to George streets.

As a preliminary study, the engineering department has prepared a sketch showing the block bounded by Woodward, Ann, Frank and George. Donald C. Egbert, city manager, said a 20-foot alley right-of-way could be secured by the acquisition of 29 feet from the rear of lots facing on Ann street.

It would be necessary to condemn eight garage buildings. Egbert stated that it will ultimately be necessary to provide the Woodward avenue frontage with alley facilities, and the studies should be carried far enough to determine the proper location for this alley.

INSURANCE - BONDS
THE BIRMINGHAM AGENCY

INSURANCE FOR EVERY NEED
Phone MI 4-2422

106 S. Woodward - Birmingham
Chas. T. Randall
Oliver P. Peterson
BUYER we SELL we SERVE

IS THIS THE COLONIAL YOU ARE SEEKING?

Center Entrance Brick & Frame Colonial
In Top Condition And Most Attractive
Living Room 13 x 22.6 with Fireplace
Full sized Dining Room
Kitchen with large Breakfast Bay
Tiled Lavatory on first floor.

Three large sized Bedrooms—Ample Closets
Tiled Bath on Second Floor

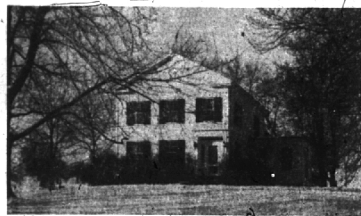
Forced Air Oil Heat—2½ garage
Downstairs Carpets. 2 Screened Porches
Built 1941 and Attractively Decorated.

SHOWN BY APPOINTMENT

WALSH, JAMES & WASEY Co.
Realtors

431 S. Woodward Ave. MI 4-6500 or Jordan 4-6033

NEW . . . AND ATTRACTIVE



in Bloomfield Hills

Beautifully remodelled . . . retaining the charm and atmosphere of age . . . everything new and sparkling. High ceilings . . . deep windows . . . interesting detail . . . this is truly charming.

- Living Room 18 by 30 . . . stunning fireplace
- Dining Room 18 by 18 . . . another fireplace
- Library . . . huge adjoining porch
- Linen and storage pantry . . . sunny breakfast room
- Sparkling Kitchen . . . first floor laundry
- 5 fine Bedrooms and 3 Baths . . . ample closets and storage
- Unfinished second floor hobby and playroom
- 5 acres . . . stable . . . beautiful grounds
- Vaughan School . . . 2 minute walk to bus

If your furniture deserves a lovely setting . . . if you want country life at its best . . . if you want to be proud of your home . . . and comfortable living in it . . . this is for you! Quick possession is possible.

CALL

MAX BROOCK INC.
REALTORS
ESTABLISHED 1895

300 S. Woodward Midwest 4-6700

Residents View TV Preview of Princeton Show



Mr. and Mrs. E. McCord Mulock, Jr., 1730 Winthrop, and Mr. and Mrs. Arthur H. Otis, Jr., 473 Puritan, and Spaulding and Sandy Otis were among those who took a special interest Sunday in the television preview of the Princeton Triangle show, "Too Hot for Today," which comes to the Detroit Masonic Temple, Friday evening, Dec. 22.

Otis and Mulock are on the committee of the Princeton club of Michigan which brings the undergraduate musical comedy to Detroit. The benefit performance will aid the scholarship fund being raised by the local alumni organization. A number of Birmingham residents plan to attend. (Joe Wheeler Photo)

Tips to Improve Local Garbage Collection Service Issued.

Local residents can do much to improve the garbage collection service in the city, Dana Whitman, assistant to the city manager, emphasized this week.

He outlined several ways in which persons can improve their own service and also assure that time will be left for collection of their neighbor's garbage. They are as follows:

- (1) IF YOU HAVE a well-type can, do not bury it under the snow when you clean off your walk or drive.
- (2) If your garbage container is left under garage, shed or porch eaves, dripping water may cause freezing of the garbage in the containers.
- (3) Snow, ice, rain, heavy garbage after holidays, and truck failures may cause the collector to get behind on his route. If the weather has been bad or there is a holiday, don't become too concerned if the collector doesn't come by on your regular collection day.

If there is a delay, the garbage will be picked up the following day.

(4) During the winter months each household will have but one garbage collection a week.

(5) If you have a large family or a large quantity of garbage, it is advisable to obtain a large size container (10-20 gallon) which will hold a week's accumulation of garbage.

WHITMAN SAID that the winter route schedule will be as follows: Monday, West of Woodward and Southfield from Quanton road to 14 Mile; Tuesday, East of Southfield and south of Lincoln to 14 Mile road, and east to the city limits, and north to Villa and Forest.

Wednesday, east of Woodward, north of Villa and Forest, east to city limits and north to city limits; Friday, area bounded by Maple, Woodward, Southfield and Lincoln.

Whitman warned that when the trucks are behind, a section can be one or two days or one to four hours off the schedule.

With continual change in personnel, it is a difficult task for new men to learn at which homes they must stop to pick up garbage.

As every house does not have the service, there is a chance that when the container isn't in plain sight, a new man will miss picking it up," he stated.

IN AN EFFORT to bring better garbage service to local residents, a red tag has been designed which will be attached to each container which isn't picked up for some reason. Therefore, if a container isn't picked up, it should bear a red tag stating the reason it was not collected.

Various reasons for not collecting are:

- (1) Garbage not properly drained and wrapped.
- (2) Container not in plain view or not readily accessible. Difficult positions, impassable gates, locked garages and questionable dogs make cans inaccessible.
- (3) Container more than 25 feet from the back door.
- (4) An improper can. It must be a standard leakproof container.

Some natures are too good to be spoiled by trash, and wherever the vein of thought reaches down into the profound, there is no danger from vanity.

Use Classified Ads—They Sell!

Water Color Society Displays 30 Pieces At Cranbrook Museum

An exhibit of 30 watercolor paintings by members of the Michigan Water Color society is on display at the museum of the Cranbrook academy of art through Sunday, Dec. 24.

This traveling exhibition, selected from the 61 paintings shown at the fourth annual exhibition of water color painting held during July at the Gross Pointe Memorial Center, will be shown within the next few months at the University of Michigan art museum, Michigan State college, Michigan State Normal College, Saginaw museum and Wayne university.

Merit awards were given by the jury of selection to these artists: Wayne L. Claxton, Charles Culver, Cyril A. Miles, Warren W. Simpson, Walter Sullivan and Donald Thrall.

The exhibit includes "Seascape" by Pamela Stump, a Kingswood school alumna now a student at the University of Michigan. Museum hours are from 2 to 5 daily, except Mondays.

Call Midwest 4-1100 to place an Eccentric Classified Ad.



Pardon Me... but don't you think it's wise to have a savings account for me, too!

1. or more opens a savings account. Liberal earnings added.



BIRMINGHAM FEDERAL SAVINGS AND LOAN ASSOCIATION

Woodward at Maple
Midwest 4-1711 and Midwest 4-1712
Member of Federal Home Loan Bank System and Federal Savings & Loan Insurance Corporation

Here Are Anchors of Responsibility With Acres of Pleasure!



30 Acres in Bloomfield

"Old World" atmosphere and a "Continental" air predominate this attractive property. High ceilings and spacious rooms provide the proper feeling of dignity and culture. Interior décor has a slight flavor of the Contemporary school. Usual first floor is enhanced by:

- Sun room 18 x 13.9
- Huge tile terrace-porch for hospitality.
- Breakfast room.
- Carpeting and draperies included.
- 2nd floor—Master bedroom suite—fireplace, sitting room, bath and second bedroom. 2 additional bedrooms and bath.
- 3rd floor—2 large bedrooms, bath.
- 3-car garage and stable.
- Swimming Pool for summer — A Skating Rink for winter.

Some Gifts Carry a Message of Cheer from

Xmas to Xmas

A well-chosen gift for the home can be a source of real pride and pleasure for years to come. Here, in our studio, we've assembled the most charming pieces from the famous show rooms of New York and Grand Rapids.

Perhaps a distinctive lamp . . .

- Glittering crystal
- Polished copper or brass
- Dainty china
- French Provincial Woods

Or, maybe a handsome table . . .

- Rich mahogany
- Fruit woods

And, of course, there are many fine pieces of

- Exquisite pottery and china

Walters-Dymond

LAMP STUDIO

1185 S. Adams, Birmingham

Open every evening until 9
Call Midwest 4-4720

SNYDER KINNEY & BENNETT
INC.
Realtors

239 S. Woodward

Midwest 4-7000