

THE CHURCH calendar for this week includes resumption of the double quartet practice and a party at the William Fellows home on Wednesday, September 6 and Rally Day in the Kirk on Sunday, September 10.

Church Services

Holy Name Catholic Church
St. Mary's, 14 Mile Road and Edgewood
The Rev. David J. Duncan, Pastor
The Rev. Joseph Cross, Assistant
Sunday Masses at 7:30, 8:30, 9:30, 10:30, 11:30 and 12:00
Christian Doctrine classes each Sunday in the school for primary grade children after 9:30 Mass.
High School Masses (The Newman Club) each Monday evening in the school at 7:30.
Baptisms Sunday at 2 by appointment.

What's Being Planned By BIRMINGHAM CHURCHES

Kirk in the Hills

The Kirk-in-the-Hills has had its first young men called into their country's service. They are Clarke Parker of Birmingham and Norm Wilson of Walnut Lake.

Several of the young people of the church will leave shortly for their first year in college. Joan Carey leaves for the University of Michigan, Adele Youel for Wooster college, Nancy Tweedale for Albion and Jack Scott for Michigan State.

Dr. Joseph A. Vance will preach his last sermon for the summer on Sunday, September 3. He has been supplying the pulpit during the vacation of the regular minister, Dr. Leslie A. Bechtel, who will return September 10.

Baptist

The First Baptist Church has announced the appointment of Miss Nancy Chesna as organist, beginning Sept. 1.

Miss Chesna is now an organ major at Wayne university and has studied with Mrs. Jessie Copp of Detroit. She has also served as organist at Redeemer Lutheran church and was formerly student accompanist for the Birmingham high school choir.

Their rehearsal will again start this evening at 8. All regular singers of the sanctuary choir have been asked to report at this time. Other interested in joining the group have been invited to attend.

CHILDREN'S NURSERY SCHOOL

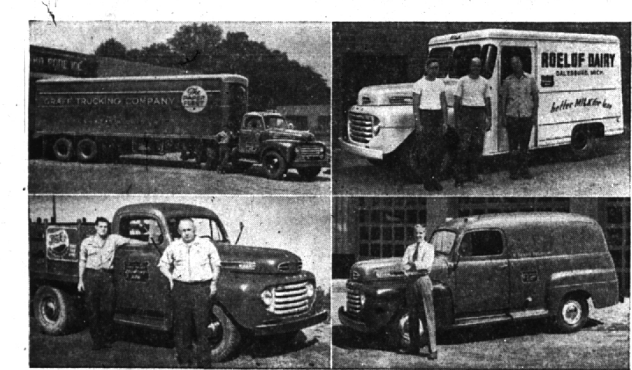
- Supervised Play
- Environment Especially Designed for Your Child's Happiness and Growth
- Conveniently Located in the Center of Town

FALL SESSION BEGINS SEPTEMBER 19th

BAPTIST NURSERY SCHOOL

For Further Information call MI 4-0717 or MI 4-4632

MICHIGAN TRUCKMEN IN THAT ORDER FOR ECONOMY RUN!



Join with drivers from 48 states in greatest Economy Run ever conducted

● The Ford Truck operators you see in the photograph on the left, are participating in the gigantic, 48-state Ford Truck Economy Run along with the thousands of other Ford Truck owners.

For the 6-month period ending December 31, they are keeping accurate, day-to-day records of gas and oil consumption, repairs, maintenance, loads hauled and miles travelled. They are demonstrating, for the record, what they already know from experience—that Ford is America's No. 1 Economy Truck Value!

Upper left: Ernest Imboden and Ford Big Job of Great Trucking Company, Kalamazoo. Upper right: Harmon Roof, George Bartz and Rex Roof of Calsburg, with a Road 74. Lower left: Robert and Charles Kuster of Kuster Beverage Co., Ypsilanti. Lower right: Raymond Biers and a Ford F-1 Panel of the R. Biers Delivery System, Kalamazoo.

THOUSANDS OF FORD TRUCK OWNERS ALL OVER AMERICA MAINTAIN DAY-TO-DAY RECORDS FOR THE GREATEST ECONOMY DEMONSTRATION EVER!

Now it'll be down in black and white—demonstration of Ford Truck economy!

Each month of the Economy Run, from July through December, 1950, these participating Ford Truck owners throughout the nation will report their day-to-day economy records.

The final results will be a comprehensive record of operating economy for every truck-using vocation. Tabulations will come from every region in the country, and cover all road conditions, in all climates. Thus the low cost operation of Ford Trucks will contribute to Ford's reputation as America's No. 1 Economy Truck Value!

All models on all jobs—under actual truck conditions—the whole nation now a Ford Truck proving ground!

On the farm, in the cities, in every state of the Union, there are Ford Trucks operating in this spectacular Economy Run. All models are included for this dramatic presentation of Ford operating economy. Every type of load and road condition will be met—from stop-and-go city traffic, to transcontinental hauling! Yes, the entire U.S.A. is the proving-ground for Ford Truck economy!

EVERY FORD TRUCK IN THIS GIANTIC ECONOMY RUN CARRIES THIS SIGN

This black and orange sign is mounted on every Ford Truck in the Economy Run. Look for it. Ask the driver about the money-saving economy and the greater oil-around value of Ford Trucks.

Ford Trucking Costs Less Because—

FORD TRUCKS LAST LONGER

Using latest registration data on 6,592,000 trucks, life insurance experts prove Ford Trucks last longer!

Join the switch to Ford! Every day, more and more truck owners are switching to Ford Truck economy—SEE YOUR FORD DEALER!

HAROLD TURNER, Inc.

TURN TO TURNER—YOUR FRIENDLY FORD DEALER

464 SO. WOODWARD AVENUE
Phones Midwest 4-7500 or JOrdan 4-5984

English Lutheran Church of the Redeemer
1800 West Park Road
The Rev. Theobald Wegmann, M.A.
James Vaughan Head, Director of Choral Society, Organist.
A staff of capable teachers for the Kindergarten, Primary, Intermediate, and Junior and Senior Grades, and Junior and Senior High School. Classes for 9:30 a.m.—Church School, 11:15 a.m.—Sunday School—9:30 a.m. and 11:00 a.m.

First Baptist Church
14 Mead Road
The Rev. Neil Korte, Pastor
Mrs. Walter W. Korte, Director of Music
C. E. Johnson, Church School Supt.
9:45 a.m.—Church School, 11:15 a.m.—Sunday School—9:30 a.m. and 11:00 a.m.—Morning worship, 11:00 a.m.—Evening worship, 7:30 p.m.—Bible study, 7:30 p.m.—Bible study, 7:30 p.m.—Bible study, 7:30 p.m.

LEGAL NOTICES

CITY OF BIRMINGHAM, MICHIGAN
NOTICE TO PROPERTY OWNERS
BIRMINGHAM CREWVIEW STREET IMPROVEMENTS
Maryland—Shelton—Northaven
The City Commission of the City of Birmingham will meet September 8, 1950, at 8:00 P. M. in the Commission Room in the Municipal Building to consider any objections to the construction of certain street improvements to be located in the following described property:

Northview—Birmingham Boulevard to City of Birmingham Boulevard
Northview—Southfield to Stanley Boulevard
Northview—Southfield to Stanley Boulevard
Northview—Southfield to Stanley Boulevard

The Commission proposes to create a special assessment district to defray the cost of this construction and said special assessment district shall consist of the following described property:

Birmingham Crewview Subdivision Lots 9 to 24 incl.
Lots 25 to 38 incl.
Lots 39 to 52 incl.
Lots 53 to 66 incl.
Lots 67 to 80 incl.
Lots 81 to 94 incl.
Lots 95 to 108 incl.
Lots 109 to 122 incl.
Lots 123 to 136 incl.
Lots 137 to 150 incl.
Lots 151 to 164 incl.
Lots 165 to 178 incl.
Lots 179 to 192 incl.
Lots 193 to 206 incl.
Lots 207 to 220 incl.
Lots 221 to 234 incl.
Lots 235 to 248 incl.
Lots 249 to 262 incl.
Lots 263 to 276 incl.
Lots 277 to 290 incl.
Lots 291 to 304 incl.
Lots 305 to 318 incl.
Lots 319 to 332 incl.
Lots 333 to 346 incl.
Lots 347 to 360 incl.
Lots 361 to 374 incl.
Lots 375 to 388 incl.
Lots 389 to 402 incl.
Lots 403 to 416 incl.
Lots 417 to 430 incl.
Lots 431 to 444 incl.
Lots 445 to 458 incl.
Lots 459 to 472 incl.
Lots 473 to 486 incl.
Lots 487 to 500 incl.
Lots 501 to 514 incl.
Lots 515 to 528 incl.
Lots 529 to 542 incl.
Lots 543 to 556 incl.
Lots 557 to 570 incl.
Lots 571 to 584 incl.
Lots 585 to 598 incl.
Lots 599 to 612 incl.
Lots 613 to 626 incl.
Lots 627 to 640 incl.
Lots 641 to 654 incl.
Lots 655 to 668 incl.
Lots 669 to 682 incl.
Lots 683 to 696 incl.
Lots 697 to 710 incl.
Lots 711 to 724 incl.
Lots 725 to 738 incl.
Lots 739 to 752 incl.
Lots 753 to 766 incl.
Lots 767 to 780 incl.
Lots 781 to 794 incl.
Lots 795 to 808 incl.
Lots 809 to 822 incl.
Lots 823 to 836 incl.
Lots 837 to 850 incl.
Lots 851 to 864 incl.
Lots 865 to 878 incl.
Lots 879 to 892 incl.
Lots 893 to 906 incl.
Lots 907 to 920 incl.
Lots 921 to 934 incl.
Lots 935 to 948 incl.
Lots 949 to 962 incl.
Lots 963 to 976 incl.
Lots 977 to 990 incl.
Lots 991 to 1004 incl.
Lots 1005 to 1018 incl.
Lots 1019 to 1032 incl.
Lots 1033 to 1046 incl.
Lots 1047 to 1060 incl.
Lots 1061 to 1074 incl.
Lots 1075 to 1088 incl.
Lots 1089 to 1102 incl.
Lots 1103 to 1116 incl.
Lots 1117 to 1130 incl.
Lots 1131 to 1144 incl.
Lots 1145 to 1158 incl.
Lots 1159 to 1172 incl.
Lots 1173 to 1186 incl.
Lots 1187 to 1200 incl.
Lots 1201 to 1214 incl.
Lots 1215 to 1228 incl.
Lots 1229 to 1242 incl.
Lots 1243 to 1256 incl.
Lots 1257 to 1270 incl.
Lots 1271 to 1284 incl.
Lots 1285 to 1298 incl.
Lots 1299 to 1312 incl.
Lots 1313 to 1326 incl.
Lots 1327 to 1340 incl.
Lots 1341 to 1354 incl.
Lots 1355 to 1368 incl.
Lots 1369 to 1382 incl.
Lots 1383 to 1396 incl.
Lots 1397 to 1410 incl.
Lots 1411 to 1424 incl.
Lots 1425 to 1438 incl.
Lots 1439 to 1452 incl.
Lots 1453 to 1466 incl.
Lots 1467 to 1480 incl.
Lots 1481 to 1494 incl.
Lots 1495 to 1508 incl.
Lots 1509 to 1522 incl.
Lots 1523 to 1536 incl.
Lots 1537 to 1550 incl.
Lots 1551 to 1564 incl.
Lots 1565 to 1578 incl.
Lots 1579 to 1592 incl.
Lots 1593 to 1606 incl.
Lots 1607 to 1620 incl.
Lots 1621 to 1634 incl.
Lots 1635 to 1648 incl.
Lots 1649 to 1662 incl.
Lots 1663 to 1676 incl.
Lots 1677 to 1690 incl.
Lots 1691 to 1704 incl.
Lots 1705 to 1718 incl.
Lots 1719 to 1732 incl.
Lots 1733 to 1746 incl.
Lots 1747 to 1760 incl.
Lots 1761 to 1774 incl.
Lots 1775 to 1788 incl.
Lots 1789 to 1802 incl.
Lots 1803 to 1816 incl.
Lots 1817 to 1830 incl.
Lots 1831 to 1844 incl.
Lots 1845 to 1858 incl.
Lots 1859 to 1872 incl.
Lots 1873 to 1886 incl.
Lots 1887 to 1900 incl.
Lots 1901 to 1914 incl.
Lots 1915 to 1928 incl.
Lots 1929 to 1942 incl.
Lots 1943 to 1956 incl.
Lots 1957 to 1970 incl.
Lots 1971 to 1984 incl.
Lots 1985 to 1998 incl.
Lots 1999 to 2112 incl.

Our Shaded Lutheran Church
14 Mead Road
The Rev. H. G. Alward
Sunday Services every Sunday at 8:00 a.m. and 11:15 a.m.
The Rev. Alward will preach.

First Presbyterian Church
Rev. W. Glen Harris, P.D., Minister
Rev. Robert A. Graham, R. Minister
Minister to Youth
Miss Julia E. Kralik
Director of Christian Education
Church School Superintendent
Commencement June 15 through Sept. 2 church school will meet during the church hour only, at 11 a.m.—Children's Church and School.
11:15 a.m.—Adult Bible Classes.

Localite Training With Naval Flyers

GROSSE ILE—Donald R. Schmidt is among the members of the Air Task group made up of fighting squadrons 733 and 734, attack squadron 732, fleet air service squadron 731 and wing staff 73, now completing the two week's training at the naval air station here.

Squadron pilots fly daily practice missions over the bombing, strafing and rocket ranges in Lakes Huron and Erie.

LIBERTY CLEANERS

for better dry cleaning
PICK UP & DELIVERY SERVICE
PHONE MI 4-0222 or MI 4-9700
Haynes At Home meal, with our Own and Operate Our Own Plant

Synopsis of Defense Information to Be Mailed to Chamber

Birmingham chamber of commerce has been placed on the daily mailing list of the US chamber for its consolidated synopsis of department of defense and general services administration procurement information, local manager Charles Mortensen said.

The national chamber will also include its weekly consolidated synopsis of contract award information for contracts over \$25,000. These bulletins will be kept on file in the local chamber office at 350 E. Maple for the convenience of the public, Mortensen added.

True dignity is never gained by place, and never lost when honors are withdrawn. —Massinger

Just Whistle...

(or call Midwest 4-3736)

Chances are our routeman delivers pasteurized GRADE "A" milk right next door.

He'll be glad to stop at your house.

Hilly Acres DAIRY

LOOK →!
A COCKROACH!
And we are the company that can rid your grocery store of this dangerous pest with one clean treatment.
One Year Written Guarantee
Remain Out Only 3 Hours—No Signs Used
ROX EX CO. FE 4-9462
1015 Pontiac State Bank Building

BINDERY

QUESTION: Is this the final stage of binding (folding, stitching, etc.) done under the roof of your present printer?

* ANSWER: The complete job is done right in our plant. Following the presswork, the order is moved right into our bindery. Within a few hours it is ready for delivery to you.

* The Birmingham Eccentric's Answer to This Question.

- SAVE TIME
- SAVE MONEY

Compare Our Prices
Compare Our Performance

The Birmingham Eccentric

Detroit Office: Trinity 5-2629
Trinity 5-6300
Plant: Midwest 4-1100
Jordan 4-9644