

Human freedom is the repeat and most precious of all flowers that grow in mankind's garden. Today the weeds of totalitarianism seek to smother freedom's bloom. America is the garden's guardian.

# The Birmingham Eccentric

**RALPH A. MAIN**  
CIVIL ENGINEER and  
SURVEYOR  
Subdivision Design and Layout  
Certified Lot Survey  
526 Henrietta, Birmingham  
Phone MI 4-2214

**AUTO-FIRE-LIFE**  
**Bruce F. Randall**  
THE TRAVELERS  
Hartford, Connecticut  
248 Ferndale MI 4-4690

## Colonial Cottage . . .



... in Bloomfield Hills

Attractively remodelled . . . la former gardeners' cottage on a large Bloomfield estate . . . and most charmingly decorated . . . 1 1/2 acres of land with huge trees, beautiful gardens, fruit and lawn . . . near St. Hugo School and Chapel. All on one floor . . . full basement . . . sparkling white with green shutters . . . secluded . . . lovely views . . . a wealth of charm and atmosphere.

- All on one floor . . . full basement . . . sparkling white and green
- Four Bedrooms . . . three Baths . . . Dressing Room
- Library or Den-Guest Room
- Colorful Kitchen . . . Breakfast Bar
- Attached two car garage . . . detached tool barn or small stable
- Oil air-conditioned . . . floored attic for storage
- Fruit, asparagus, berries, etc.
- St. Hugo and the commuter station nearby
- Taxes only \$44 annually!

A perfect country home for a growing family . . . ideally suited for Early American furniture . . . rambling and comfortable. The price is surprisingly low . . . only \$26,750. Let's look today!

CALL  
**MAX BROOCK INC.**  
REALTORS  
ESTABLISHED 1905  
300 S. Woodward Midwest 4-6700

## Attention . . .

Let us survey your insurance needs. Our survey will eliminate future misunderstandings. Don't wait—it's time to insure now.

LET US HELP YOU  
**Hugh C. White Agency**  
217 Pierce Street  
(Opposite Municipal Building)  
Birmingham, Michigan  
Service As Near As Your Telephone  
Midwest 4-3610 or 4-3611  
—INSURANCE SINCE 1920—

## Commission Gets 20-Page Summary and Analysis of City Insurance Program

A lengthy 20-page report on insurance protection carried by the City of Birmingham was presented to the city commission Monday night by City Manager Donald C. Egbert.

Listing 15 different types of insurance, the review was complete with tables and recommendations. In a memorandum attached to the thick report, Egbert commented, "It has been several years since there has been a complete review of the insurance protection provided the city."

"In view of increased building costs and enlarged scope of activities of the city, it has been deemed advisable to review the entire insurance program."

UNDER THE HEADING "Municipal Building Contents," Egbert

## POLO SEASON Is Here

Are You and Your Family Protected?

\$10.00 Buys a Family Policy for 2 Years  
\$5.00 Buys an Individual Policy for 2 Years  
Benefits up to \$5,000 per individual

**THE BIRMINGHAM AGENCY**  
Insurance Bonds  
Chas. E. Randall, Oscar F. Peterson  
INSURANCE FOR EVERY NEED  
AFTER WE SELL WE SERVICE  
106 S. Woodward MI 4-2422

## NEW WAY TO BUY WALLPAPER!

Nancy Warren Method  
Assures Perfect Color Harmony!

Say "good-bye" to your new wallpaper. Nancy Warren's amazing new Style Selector way! Almost automatically, beautiful colored-coordinated papers are presented side by side, for easy comparison. Come and see this remarkable new selection and choose your wallpaper with the unerring good taste of a professional stylist.

**KEYED PATTERNS CREATE UNFAILING HOME BEAUTY!**

You can't help but achieve beautiful taking beauty when you decorate your home with exquisite Nancy Warren Color-Harmonized Wallpapers. For every one of the many colorful patterns is keyed with other styles with which it harmonizes. See these lovely, budget-priced papers now!

MI 4-9034  
240 S. Woodward

## Bits of Birmingham

**Manly A. Tyson, local investor of a new baseball game, has already won "international" fame.** Tyson recently attended the Central School Old Boys association reunion in Hamilton, Ont., taking one of his games with him, where it was an immediate sensation. The Hamilton Spectator depicted a great deal of news and pictorial space to the game, even the player who suffered a "Charlie horse" in one leg as he ran bases.

The annual flying picnic, sponsored by the Bery airport, drew some 20 aviation enthusiasts and 12 planes last week Wednesday for an all-day trip to Canada. The entire trip, about 80 miles, was highlighted by a fish-ry in Canada and low-lighted by one flyer who became lost and showed up about an hour later. It might have been due to the fact that it rained nearly all day.

**Cranbrook Artist Wins Exhibit Award**

Wallace M. Mitchell, painting instructor at the Cranbrook academy of art was awarded fifth prize of \$150 in the fourth annual Old Northwest Territory art exhibit for his gouache entry "Painting With Ovals."

An unusually rich, sensitive composition in egg shapes, with greens, reds and blues predominating, the jury was very much interested in this particular composition for its originality.

Mitchell studied at Cranbrook with Zoltan Sepeshy prior to his accepting a teaching post. He has exhibited widely in Detroit, New York, Chicago and Paris and has been awarded three prizes at the Michigan Artists exhibition.

**THE COMPETITION** was open to professional artists in Ohio, Michigan, Indiana, Wisconsin and Illinois.

Paintings will be on exhibit at the Illinois state fair from August 11 to 20 and certain of the prize winners will be purchase awards for the Illinois state museum at Springfield.

**3 Million People** Are already protected by Continental's original 3-year **POLIO INSURANCE** Is Your Family Protected?

\$5000 coverage for each insured family member costs only \$10 for 2 years.

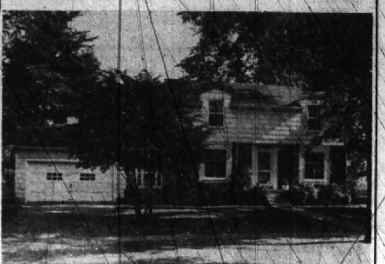
Come in or phone today for full details.

Lawrence McKay, Jr.  
1660 Yosemite  
Midwest 4-4968

**A customer is deserving of the most courteous and attractive treatment we can give him.**

**THE McLELLAN AGENCY**  
Successors to the Rice A. Howell Agency  
205 Wabash Building MI 4-2860  
Financial Security is Second only to Health

## How Attractive!



You will exclaim when you inspect this home and the gardens. Here is perfection of planning and decorating, plus sound 1941 brick and frame construction. A combination of factors difficult for the homeseeker to obtain on today's market.

The three bedrooms are unusually large, each one will accommodate twin beds with plenty of room to spare. The number and size of the closets will be a pleasant surprise.

In addition to a large living room and dining room (with carpeting included) there is a cozy pine paneled den, sparkling kitchen, and lavatory.

Here one has a wooded and secluded location. The garden is completely fenced, and the screened breezeway is a great comfort on hot days.

Doesn't it all sound delightfully attractive? Let us show you today.

**WALSH, JAMES & WASEY Co.**  
Realtors  
431 So. Woodward Ave. MI 4-6500

**L. C. COWEN, Broker & Appraiser of Detroit & Suburban Realty**

offers some exceptional locations on Woodward and adjacent to Centre, either for long term lease or purchase. They are real opportunities for the "right" acceptable prospect!

Also have a few, close by, desirable dwellings in the medium price bracket offered below reproduction cost and good values in acreage within 25 miles.

Seeking dwelling and investment offering at prices in line with current values. This broker neither advises nor solicits exclusive listings when owner is available. Write or see locally, before ten or after five:

740 Oakland or 1455 Penobscot Bldg., Detroit (26)

## "TO MEET YOUR NEEDS"

**HENRIETTA AVENUE.** An older 3 bedroom frame in good condition. Priced to sell.

**HOLY NAME.** Excellent condition. Large landscaped lot, 1 bedroom and bath on first floor; 2 bedrooms and bath on second. Priced to sell.

**2 YEARS OLD.** Brick nicely landscaped. Living room with fireplace. Recreation room with fireplace. Extra bedroom and lavatory first floor. 2 bedrooms and tile bath up; offered complete with new carpeting.

**IN THE HILLS.** 1 1/2 acres nicely landscaped. Excellent condition. English type; 4 family bedrooms and 3 baths besides helps quarters. A very fine location and home for large family.

**E. S. JACKSON & CO., Realtors**  
750 South Woodward Avenue Phone: MI 4-0251-2



SMALL AMOUNTS saved regularly soon grow to worthwhile proportions . . . give you the money you want to buy what you want. Invest with us today where earnings are higher . . . savings safety assured.

**BIRMINGHAM FEDERAL SAVINGS AND LOAN ASSOCIATION**

Woodward at Maple  
Midwest 4-1711 and Midwest 4-1712

Member of Federal Home Loan Bank System and Federal Savings & Loan Insurance Corporation

## No Construction Woes . . .



1359 Pilgrim

clean. Nearly new, too. Good-sized rooms. A "Dream" kitchen and nook, plus: clean. Nearly new too. Good-sized rooms. A "Dream" kitchen and nook, plus:

- 3 Large Bedrooms (Double closets).
- 2 Lovely Tile Baths.
- Glazed Porch overlooking nice yard.
- Spacious Paneled Games Room.
- Oil Air Conditioned Heat.
- 90-foot site. Aluminum storms and screens.
- Quarion School—5 Blocks.

You'll say—"It sounds good". It's even better than that! The price is way below reproduction cost.

**SNYDER KINNEY & BENNETT INC.**  
Realtors  
239 S. Woodward Midwest 4-7000