

Washington Group Leaves by Train for Annual Trip

By Dick Krushinsky
Leaving today from the Michigan Central terminal in Detroit on their traditional Washington trip will be 115 Birmingham students, six advisers and their director, E. A. Hubbard.

Included in the trip for the first time this year is a visit to the Folger Shakespearean library in Washington. The library contains an exact duplicate of the famous Globe theatre where Shakespeare's "Macbeth" and "Hamlet" were first played.

Senator Homer Ferguson and Congressman George Dondero are expected to be dinner guests of the group at the hotel Roosevelt in Washington.

OTHER POINTS of interest to be visited in Washington are the Library of Congress and Arlington cemetery, the tomb of John Paul Jones and the Jefferson and Lincoln memorials.

At Mt. Vernon the group will carry on a traditional ceremony with Ed Matus, president, placing a wreath on the tomb of George Washington and, of course, singing "My Vernon Belle."

The New York section of the trip will include a visit to the United Nations assembly at Lake Success.

Members of the group will see their choice of plays, now attending "South Pacific," "Mr. Roberts," "Kiss Me Kate," or "Where's Charlie?" They will also

dine at Billy Rose's Diamond Horseshoe.

WASHINGTON GROUP advisers are Miss Janet Bainbridge, Miss Ruth Hull, Miss Alice Price, John Simonds, Harold Newcomb, Ross A. Wagner, principal, and E. A. Hubbard, director.

Mrs. Powers Names ACS Fund Drive's Chairmen for Area

Mrs. Walter E. Powers, Birmingham-Bloomfield chairman for the American Cancer society, has announced the slogan for the fund drive being conducted this month is "Strike Back At Cancer."

She said Monday that local donations would be used in the fight against cancer in the fields of education, research and service to those who are suffering from this disease.

Contributions may be made through the chairmen of the drive, or may be mailed directly to the society, Box 245, Birmingham. Mrs. Powers also stated that the ACS did not participate in the United Foundation drive some months ago.

BIRMINGHAM drive chairmen are Mrs. John Adams, Mrs. John Bagby, Mrs. Milo Bostwick, Mrs. John E. Eckenrode, Mrs. William R. Edwards, Mrs. Robert T. Gray, Mrs. Nelson Hanston, Mrs. Spencer Hopkins, Mrs. C. W. Kraft, Mrs. Yvonne C. Mickelson, Mrs. C. A. Page and Mrs. J. W. Stark. Mrs. Robert Vanderhook has charge of the Bloomfield Hills area; Mrs. John Osler, Bloomfield; Mrs. John Gillette, Jr., Village and Mrs. John Fosse, Wing Lake.

City Schools Name Champion Spellers; District Bee Apr. 21

Local schools have completed individual spelling bees, the winners of which will enter inter-school competition at Pierce school April 21. The contest will be in charge of Marlene Wilson.

Paula Paris, 12, a sixth grade student at Pierce, will represent her school. She out-classed Donna Lee Watts, runner-up, with her correct spelling of "truly."

"Beech" was the word which put Ann Farnie in the front spot at Barnum, with Joan Gassaway in second place.

AT ADAMS school Patricia Barkley took first place for the sixth grade when she spelled "proportion" correctly. The runner-up is John Horn. Both are 11 years old.

John Appleford will represent the Bloomfield Village school because he knew how to spell "rehabilitation." The runner-up here is Maureen Garwood.

Rivenoak Sewer Hearing April 24

April 24 has been set by the city commission as the date of the hearing on the proposed construction of a new combined sewer on Rivenoak, between Adams and Oxford.

To cost an estimated \$9,300, private property would be asked to pay \$7,125 of the total.

City Won't Block Building Permits for Lincoln Homes

In one of its rare split decision votes, the city commission Monday evening turned down a motion by Commissioner C. Theron Van Dusen to hold up building permits on proposed homes on Lincoln, between Taunton and Eton.

The 5 to 2 vote saw only Van Dusen and John O'Gorman deciding affirmatively. Mayor Donald S. Bell and Commissioners Milton P. Mallender, Bruce Booth, Ralph Main, and Garland Tait opposed the motion.

The commission learned that a contractor is preparing to erect 20 to 30 homes in this particular block which is served by an 8-inch sewer which the city considers inadequate.

THE CITY PROPOSES to replace it with a larger one, together with a more adequate sewer on Eton between Webster and Lincoln.

A hearing on this project has been scheduled for April 17.

In its discussion, several commissioners indicated the construction might take place this summer although 75 per cent of the property owner's share would not be paid in.

The commission's policy on most assessments is to wait till at least three-fourths of the private property owner's share is received by the city treasurer before awarding contracts for the improvement.

Easter Parade SUITS AND DRESSES

very much in
"vogue"...this
half size dress
lovely with
crocus white



OPEN
FRIDAY
EVENING
TILL
NINE



Starred in the March 1st "Vogue" . . . and in your fashion plans for spring. Navy or black rayon sheer crepe . . . its crisp detachable white exquisite with cutwork embroidery . . . its every lovely line Mynette-planned to make your figure seem younger and slimmer, gentle bodice, whitened waist, pleated skirt! Sizes 14½ to 24½. Rare charm, rare value!

\$12.95



PERFECTLY SUITED
FOR EASTER
In Miss Cricketeer's "DEB"

It's the pride of our silhouette-wise Easter suit collection . . . sculptured along classic lines and designed to be the backbone of your wardrobe. The elegant pockets are bound to draw attention. Meticulously tailored by Miss Cricketeer in exciting new colors for Spring.

Sizes 10 to 18.



MANY
OTHER
SUIT
MODELS

the
F. J. MULHOLLAND
Company

for Spring
for Easter

HAND STITCHED and HANDSOME SPORT COATS

It's the new Cricketeer Featherweight as seen in Esquire. Tailored of the most comfortable, lightest weight pure wool . . . handstitched at all edges and pockets. We also have many other fine sport coats on display by Cricketeer and McGregor. A large selection of spirited weaves and colors.

\$24.95

OTHER MODELS FROM \$22.50



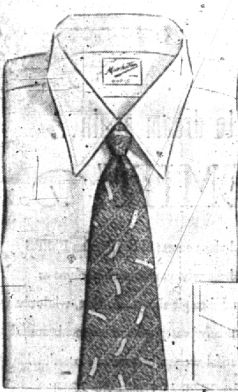
We've the
SLACKS

To Go With Them, Too!

All the lightweight spring fabrics are included in our new selection. You'll find your favorites in most every color and price. All wool slacks and part wool slacks are being featured.

Slack Prices
Start at **\$6.95**

Our Low Priced Shirt
With the High Quality Label



The **DORIC** by
Manhattan

\$2.95

"The Doric Range"
Extreme wide-
spread collar
with single stay.

"The Doric Turf"
Regular point
"Manhattanized"
collar.

A white broadcloth shirt as handsome as it is rugged—an exceptionally fine shirt value. Size-fits (average fabric residual shrinkage 1% or less) . . . Manformed—cut to fit your figure. Collar perfect in "Manhattan's" most popular collar styles. *Best of all, the Doric bears the "Manhattan" label, your guarantee of superior quality and workmanship. How much again? \$2.95! Come! Get yours today!

MULHOLLAND'S
MEN'S and BOYS'
DEPARTMENT