

90th Anniversary Celebration

Customers' Corner
WHO WANTS TO PUT A&P OUT OF BUSINESS?

Not our customers. Many thousands of them are writing and phoning us and telling our clerks and managers that they want to continue to enjoy quality A&P foods at low A&P prices.

Not our suppliers. Farmers and manufacturers alike are telling us that they want to protect this efficient outlet for their products.

Not our 110,000 employees. They want to keep the high wages, good working conditions and security they enjoy with A&P.

Not labor. Union leaders are writing us to ask what they can do to defeat this threat to labor's living standards.

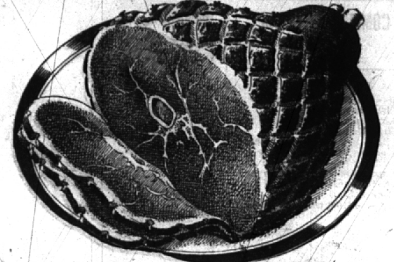
All these people are telling us they don't want the anti-trust lawyers to put A&P out of business.



1859 1949

Packer's Label Tender Green Iona Peas 3 3 ¹ / ₂ -Oz. Cans 29c	Red King Brand Whole Kernel Corn 2 12 ¹ / ₂ -Oz. Cans 19c	Packer's Label Grated Tuna 6-Oz. Can 25c	Sultana-Red Kidney Beans 3 18 ¹ / ₂ -Oz. Cans 25c	Ruby-Bee Grape Jam 2-Lb. Jar 25c	Iona Flavor-Rich Tomato Juice 46-Oz. Can 19c
Packer's Label Maine Sardines 3 3 ¹ / ₂ -Oz. Cans 25c	Cold Stream Pink Salmon 1-Lb. Can 37c	A&P Ling Cut Sauer Kraut 28-Oz. Can 10c			

Come and See How A&P Carries on its Founder's Formula: "Give the People the Most Good Food You Can for Their Money!"



FRESH HAMS Shank Portion Lb. **39c**
Cut from Tender, Young Porks

Pork Loins Lb. **43c**
Ready-to-Eat—Shank Portion

Cooked Hams Lb. **45c**
Delicious, Flavorful—100% Pure

Pork Sausage Pound Cello Bag **33c**
Fresh, Plump, New York Dressed

Frying Chickens Lb. **47c**

Choice of 3 Kinds! ANN PAGE BEANS

With Pork, Vegetarian, or Boston Style **3 18¹/₂-Oz. Cans 29c**

A&P Unsweetened Grapefruit Juice 46-Oz. Can **29c**

Stewart's in Light Syrup Blueberries 15-Oz. Can **29c**

Packer's Label Red Sour Pitted Pie Cherries No. 1 46-Oz. Can **23c**

Blended Juice Packer's Label Orange-Grapefruit 46-Oz. Can **39c**

Dole Pineapple Juice 18¹/₂-Oz. Can **23c**

A & P Grapefruit Sections 2 20-Oz. Cans **37c**

Del Monte Sliced Pineapple 20-Oz. Can **33c**

Dole Crushed Pineapple 20-Oz. Can **29c**

Sultana Fruit Cocktail 20-Oz. Can **29c**

A & P Fancy Apple Sauce 2 28¹/₂-Oz. Cans **23c**

Sea Side Lima Beans 2 20-Oz. Cans **33c**

Iona Cut Beets 2 20-Oz. Cans **27c**

Iona Tomatoes 2 20-Oz. Cans **23c**

Iona Golden Corn Cream Style 2 20-Oz. Cans **21c**

Asparagus Tips Del Monte Green and White 16¹/₂-Oz. Can **29c**

Van Camp's Kidney Beans 2 11¹/₂-Oz. Cans **25c**

Heinz Soups Chicken Noodle or Mushroom 2 10¹/₂-Oz. Cans **35c**

Sultana Rice Short Grain 3-Lb. Cello Bag **27c**

Ann Page Foods ... A&P's Finest
Prepared in Tomato and Cheese Sauce

Spaghetti 2 15¹/₂-Oz. Cans **27c**

Ann Page Salad Dressing 17.25c

Tomato Ketchup 2 14-Oz. Cans **35c**

Macaroni or Spaghetti Dry 3-Lb. Pkg. **29c**

Armour's Meat Treats
Hot or Cold, It's a Favorite

Armour's Treet 12-Oz. Can **39c**

Armour's Star—For Sandwiches

Chopped Ham 12-Oz. Can **49c**

Armour's Star—Flavor Fresh

Vienna Sausage 4-Oz. Can **19c**

Armour's Star—Cured

Beef Hash 1-Lb. Can **29c**

Armour's Star—Delicious

Deviled Ham 3¹/₂-Oz. Can **17c**

Campbell's—Vegetable Soup 2 10¹/₂-Oz. Cans **25c**

Swanson's Whole Cooked Chicken 3¹/₂-Lb. Can **1.49**

Broadcast—Canned Beef Hash 18-Oz. Can **29c**

Swift's Roast Beef 12-Oz. Can **53c**

Staley's Sweetore Syrup 24-Oz. Bot. **25c**

Hershey's Chocolate Syrup 2 18-Oz. Cans **29c**

Recipe Marshmallows 2 10-Oz. Cello Bags **33c**

Nestle's Ever-Ready Cocoa 10-Lb. Box **29c**

Argo Corn Starch 1-Lb. Box **11c**

Ruby Bee Grape Jam 2 12¹/₂-Oz. Jar **25c**

Every Meal Apple Butter 14-Oz. Jar **10c**

Lang's Dill Pickles Qt. Jar **19c**

Townhouse Crackers By Lakeside 1-Lb. Pkg. **29c**

Duff's Cake Mix Devil's Food 14-Oz. Pkg. **29c**

Pancake Flour Sunnyfield Brand 5-Lb. Pkg. **39c**

Fig Bars National Brand 1-Lb. Pkg. **31c**

Bull Dog Biting 2-Oz. Pkg. **8c**

Woodbury Soap Reg. Cake **8c**

A&P Has a Thrifty Array of COLLEGE INN PRODUCTS
In Rich Broth—Ready to Serve

Whole Chicken 3 Lb.-3.3 Oz. Can **1.49**

With Mushrooms in Whipping Cream Sauce

Chicken ala King 10¹/₂-Oz. Can **55c**

Rich in Flavor, Nutritious

Tomato Juice 46-Oz. Can **27c**

A&P COFFEE
Is the Coffee for You Because It's Custom Ground for Your Coffee Maker

1-Lb. Bag **42c**

1-Lb. Bag **46c**

1-Lb. Bag **49c**

1-Lb. Bag **42c**

1-Lb. Bag **46c**

1-Lb. Bag **49c**

Eight O'Clock

Red Circle

Bokar

Sultana Brand Stuffed Olives 4¹/₂-Oz. Bot. **29c**

Sure Good Margarine 1-Lb. Ctn. **19c**

Bisk Flavor Lipton's Tea 4-Lb. Pkg. **33c**
Tea Bags - 16 for 21c

White, Bright Washing Oxydol Large Pkg. Giant Pkg. **27c 71c**

Safe, Easy to Use Swift's Cleanser 2 14-Oz. Cans **23c**

Get Thrifty Giant Size Silver Dust Giant Pkg. **55c**

Dromedary Date-Nut Bread 2 8-Oz. Cans **37c**

Extra Nutritious Pard Dog Food 2 1-Lb. Cans **29c**

Fish to Please Your Purse and Taste
Economic, Pan-Ready

Whiting Lb. **17c**

Blue Pike Fillets Lake Erie Lb. **49c**

Halibut Steaks Lb. **41c**

Fresh Whitefish Lake Erie Lb. **49c**

Sole Fillets Lb. **39c**

Young Hen Turkeys Lb. **59c**

Roasting Chickens Heavy Rock Bred Lb. **49c**

Ground Beef Fresh, Lean Lb. **57c**

Skinless Frankfurters 100% Meat Product Lb. **49c**

Bologna Ring or Large Pieces 100% Meat Product Lb. **49c**

Chicken Legs Cut from Fresh Frying Chickens Lb. **89c**

Ducklings 5 to 9 Lb. Average Lb. **43c**

Crisp, Fresh Large Heads Firm, Fresh **CAULIFLOWER**

Snow White Home Grown Large Head **2 for 29c**

Flavorful, Golden

Pascal Celery Michigan Grown Large 30 Size stalk **10c**

Jonathan Apples Cortland or Macintosh 6 Lbs. **29c**

Fresh Spinach Crisp, Tender Clean 10-Oz. Cello Bag **19c**

Tokay Grapes California Sweet, Plump 3 Lbs. **29c**

Fresh Cranberries It's National Cranberry Week Pound Cello Bag **19c**

Ripe Bananas Lb. **16c**

Idaho Potatoes U. S. No. 1— for Baking 10 Lb. Bulk **59c**

Bartlett Pears California Sweet 3 For **39c**

Acorn Squash 3 For **10c**

Salad Mix Fresh, Crisp 6-Oz. Cello Bag **21c**

Jane Parker DONUTS

Plain Dozen in Ctn. **18c**

Jane Parker Fresh Baked Apple Pies Each Only **39c**

Sliced, Sharp CHEDDAR

Wisconsin Year Old Lb. **69c**

Variety Cookies Sugar, Raisin, Peanut Fudge or Oatmeal Pkg. **25c**

Pumpkin Pies Fresh Baked 8-inch Size Each **39c**

Deluxe Donuts Powdered Sugar Pkg. of 8 **19c**

Golden Loaf Cake Gold Raiser Each **25c**

Marvel Bread White, Sliced Embossed 1¹/₂ Lb. Loaf **18c**

Sunnybrook Grade "A" Medium Size Fresh Eggs Doz. in Ctn. **63c**

Ched-O-Bit Cheese Food 1-Lb. Loaf **69c**

New York Cheese Medium Sharp Lb. **59c**

Wisconsin Colby Cheese Lb. **49c**

Kraft's Velveta Plain or Pimento 1-Lb. Pkg. **29c**

Tangy Links Plain or Smoked 8-Oz. Pkg. **37c**

Wisconsin Longhorn Cheese Lb. **49c**

A&P Super Markets
THE GREAT ATLANTIC AND PACIFIC TEA COMPANY
These Prices Effective at All A&P Super Markets Only