

Fear is a state of mind that works tremendous and untold hardship upon the lives of every generation. Fear, generally, is groundless, as each of our memories can attest. Whenever I am tempted to the evil of fear, I fight it with calm optimism . . . or banish it by supplanting my thought with another subject.

## Krisport to Sponsor Aerobic Contests

As a part of the national celebration of Aviation Week, Krisport, at Orchard Lake and 13 Mile roads, will hold an aerobic contest Sunday, June 12. Events will be open to the public with no admission charge. Present plans call for spot landings, precision spins, and possible

precision spot landings, using parachutes. The competitive program will start at 10 a.m.

## Estimated Fire Loss \$10 for Past Month

Total estimated loss by fire in Birmingham last month has been set at \$10, according to the monthly report of Fire Chief V. W.

Griffith. He also reported the department responded to 15 calls, 12 silent fire alarms, one miscellaneous run and one emergency run.

The balance of the department time was used on inspections, both equipment and department headquarters. Over 300 hours were spent on fire fighting drills.

## Residents Asked to Help Destroy Poison Ivy Vines

Eradication of poison ivy from Birmingham areas was urged this week by John Johannot, city

"Exposure to poison ivy often results in serious month-long illness and sometimes hospitalization. No one is immune to ivy poisoning. The plant is especially prolific this spring. Johannot said. He urged individuals to cooperate in eradicating the plant from vacant lots and along pathways and water courses.

"Poison ivy, to begin with, should not be confused with ground sumac or wild straw berries," Johannot said. "It is a three-leaved plant irregularly and deeply jagged on the margins of the leaf. It is these leaf margins which carry the maximum amount of poison oil, although all parts of the plant are poisonous. Ivy is found in dry open places, on short erect stems from six to ten inches high, but it is more easily recognized in its vine state, climbing on trees and telephone poles.

Killing is Simple He pointed out that killing the plant is comparatively simple. "All it takes to destroy it is a spray applied to the foliage. One can use 'ammgate' or the 2-4-D solution. The ammate will take about three quarters of a pound to a gallon of water. This will treat a square rod of dense foliage. In using the 2-4-D solution, full directions are on the package."

The killing action of the spray does not take place at once, he pointed out. The ammate will take from five to ten days, while the 2-4-D will take about three weeks. "If rain should come within four hours after spraying, the treatment should be repeated. It should also be repeated if the plants show any green at the end of three weeks. The spraying must be repeated each spring until the plants no longer appear.

Either of these sprays will kill any broad-leaved plants to care should be used to keep it away, even in the finest mist, from valuable cultivated plants. Both are harmless to men or animals. A third product which will destroy the plant, according to the city forester, is dry borax. Since the application of this, at the rate of 10 pounds per square rod will kill all vegetation, it is best to use it only in the spring and fall, just before a rain or when the ground is wet.

Poison Lairs Johannot urged that everyone refrain from grubbing poison ivy out of the ground, unless it is cool or cold weather, and one is fully attired. Also, he warned that clothing which has gathered the ivy oil may infect the wearer at a later date if it is not thoroughly cleaned.

As a final warning, Johannot advised that poison ivy and poison sumac should never be burned, since the smoke is very toxic. He also said persons could become infected by petting cats and dogs which had come in contact with the ivy, which is another of the many reasons it should be destroyed.

## Bits of Birmingham

During the Garden Tour this past weekend, there was a show-stopping white oriental poppy in the garden of Mrs. Harry Coon of Willow lane. Last year, this Wanderer was informed, this rare species had 25 blooms, on one plant alone.

This Wanderer overheard a remark Saturday morning, made by a man who parked a car carrying Indiana license. He wiped his brow, glanced up and down Woodward avenue and turned to his companion with, "Well, by gosh, this the first town I ever hit where the money was lying around the streets the way it is here. The place sure must be hottest—let's leave the car windows open while we go eat!" His money comment, of course, referred to the penny campaign of our local Girl Scouts.

Ray Walmoth, whose picture appeared in last week's Eccentric captioned as "The Wanderer," is a Player on Culver Tennis Team, went on to prove that claim by winning the pro school division championship May 28 at St. John's Military Academy in Wisconsin. Ray's parents, Dr. and Mrs. Walmoth, went to Delafield to see their son play and to watch the Culver tennis walk off with every title the tournament offered.

Summer, according to V. W. Griffith, chief of the Birmingham fire department, presents its own fire hazard. He told this Wanderer that fish bowls and vases of flowers in windows are frequent causes of fire, as are imperfections in window glass. The latter is particularly a hazard in attic windows where the rays of the sun through glass can start a fire that has a good start before it is detected. "It would prevent many fires," the chief said, "if persons would move fish bowls away from windows when they are going to be away for some time and also take precautions by using fire-proof substances as coverings for attic windows. These are the fire sources all departments are especially alerted for during the hot summer months."

Fire Chief V. W. Griffith has announced that the Birmingham fire department will hold open house the weekend of June 18 and 19. The annual departmental inspection was conducted by city officials Monday evening.

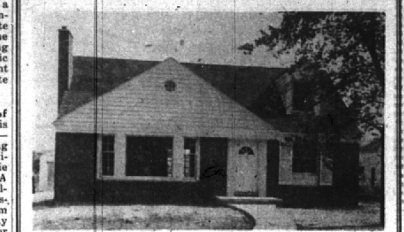
Ain't science wonderful? It has been brought to the attention of this Wanderer that a local store is advertising an "osculating" sprinkler. The instrument, which we assume carries a trade name something like "Wet Smack," is guaranteed, too. Guaranteed for complete coverage within a radius of 25 feet. And, as though that were not enough, the thing comes

## Have You Met?

Former Detroiters, Mr. and Mrs. William Paddison and their children, Wendy Sue and Robert William who are now living in their new home at 32343 Mayfair? Mr. Paddison is with the Great Lakes Foundry Sand Company.

## Tells About Medals

Dr. Sam Bruni spoke to Birmingham Rotarians at their Monday noon luncheon regarding the origin of orders, decorations and medals. A hobby of his, Dr. Bruni 111 is a list of his remarks with medals from his own personal collection.



1481 W. LINCOLN

This deluxe Cape Code offers solid living comfort combined with sensible economy. Note these unusual features:

- 2 large bedrooms on the first floor. Second floor semi-finished for 2 additional bedrooms and full bath.
  - Up-to-the-minute kitchen with gleaming Youngstown steel cabinets. Hotpoint Dish-washer and Disposal.
  - Beautiful gray tile bath with built-in dressing table.
  - Finest mechanicals and highest quality workmanship. 2 1/2 car garage.
- Here is a flexible home to be enjoyed by both the growing family or the family whose children have left and who return only for an occasional visit.
- In the Quorton School District \$21,500.00

**SNYDER KINNEY & BENNETT INC.**  
Realtors  
239 S. Woodward Birmingham 1400

A FEW OF OUR

**Best Buy in Birmingham**  
**WHITE ENGLISH COTTAGE**  
Tri-level home of unique design in one of B'ham's finest districts. 4 bedrooms, 2 baths, screened porch, 2 car garage, oil heat, recreation room. Just a step from stores. Quorton School.

**PRIME LOCATION**  
A million-dollar front yard (the Birmingham Golf Club) is one of the features of this excellent property. 94 foot lot. Delightfully sprawling ranch-type home. Spotlessly clean, this residence contains 2 family bedrooms and bath, guest bedroom and lavatory, lovely porch, extra fireplace in recreation room. The grounds are beautiful. You'll like it at \$27,500. See it today.

**DORCHESTER—\$18,500**  
What a price in this location! Brand new offering near Adams School. 4 bedrooms, 2 baths and in a lovely section. A little "doing" is all the house needs to make it "HOME" for the right family.

**NEW LISTING**  
Over 1/2 acre, beautiful flowers, lawn, trees, fruit and vegetable gardens. Brick Colonial, 3 bedrooms and sewing room up plus maid's quarters on 3rd; 31 foot living room with parquet floors, library and sunroom, also breakfast room. Close in yet seemingly right in the country. \$21,500.

**BENJAMIN and STEPHENS, INC.**  
119 S. WOODWARD — Realtors — BIRMINGHAM  
Birmingham 4129 Jordan 4-1732

## ON LONE PINE ROAD In BLOOMFIELD HILLS



near Cranbrook School

PERFECT for a large family . . . perfect in design, construction, floor plan, appointments, location . . . everything that makes a home a place of fond memories . . . a happy home.

Inviting center Entrance Hall, Living Room, down a step from the hall, 16 by 26; Dining Room 17 by 17 1/2; Library 14 by 14, fireplace; Kitchen 11 by 17 1/2; new Powder Room and Lavatory; Large Living Porch; Pantry and Breakfast Room.

Mechanically new . . . new oil burner, softener etc., new roof and gutters, freshly painted outside, J-M insulation in ceilings; Living Room carpeting, deep-freeze, garden tractor and tools included in the price. Taxes only \$216 annually . . . and 3,500 gallons of oil heat it comfortably.

Less than a mile from Cranbrook . . . nearly 3 acres of wooded, rolling land . . . beautiful planting. Designed by Muehlman and Farrar, built by Amshary and Merritt . . . truly one of the most attractive residences in the Bloomfield area . . . priced at roughly one-half reproduction cost. The owner is moving West . . . you can begin really living here! Appointments cheerfully arranged.

Call  
**MAX BROOCK INC.**  
REALTORS  
ESTABLISHED 1936  
300 S. Woodward Birmingham 1212

## ON A HILL TOP in Bloomfield Hills



White Colonial farmhouse on 4 1/2 acres of rolling and beautifully landscaped property.

Delightfully charming 17x30 Living Room with wide fireplace, large Screened Porch, 12x18 Dining Room with corner cupboards.

There is a Downstairs Bedroom with bath. This room may be used for a Play or Recreation Room as it is large and sunny.

Upstairs are Four fine Bedrooms and Two tiled Baths. Oil heating—taxes \$275.00 annually—three car garage—small Stable.

A charming home ideally situated for youngsters—Vaughan and St. Hugo's School buses. The price of \$28,500 will surprise you—the home will please you—Let's look today.

**WALSH, JAMES & WASEY Co.**  
431 So. Woodward Ave. Birmingham 4900

**CRUSHED STONE - GRAVEL TOP SOIL - FILL DIRT**  
**Dick Doherty**  
DUMP TRUCKING Phone 11122 Daves St. Utica 7-1008

**THE J. L. HAYS CONSTRUCTION COMPANY**  
Commercial & Industrial Building  
Birmingham Ph. 1151

**AUTOMATIC SELF-DRAINING UNDERGROUND SPILLAGE SYSTEMS**  
Enjoy a beautiful lawn - install the new Aqua Spray. Completely covers ANY size or shape lawn. Completely covers ANY size or shape lawn.  
• ALL COPPER  
• LIFETIME GUARANTEE  
• PROMPT INSTALLATION  
• LOW COST  
Phone for estimates. Factory - the obligation.  
**Aqua Spray LAWN SPRINKLER COMPANY**

Fort Lauderdale, Florida  
For Best Buys or Rentals in Beautiful Fort Lauderdale (Inhibition Water, Playgrounds) contact  
**Rowland D. Schell**  
(Formerly of Detroit) c/o L. C. Judd & Co. 2936 E. Lee Ochs Blvd. Fort Lauderdale, Fla.

**INSURANCE - BONDS THE BIRMINGHAM AGENCY**  
CHAS B RANDALL OSCAR P PETERSON  
Insurance for Every Need  
PHONE 840 106 S WOODWARD - BIRMINGHAM

## A REAL OPPORTUNITY TO BUY

A practically new Colonial home in Bloomfield Village at less than reproduction. This house has 4 bedrooms and 2 tile baths, library with fireplace, recreation room, oil AC heat, 2 car attached garage. Best construction and many extras. Complete with landscaping, screens, etc. Built for home by owners one year ago. Account leaving City is being offered for immediate sale with all carpets and draperies. Most desirable location in Bloomfield Village and should be a "Must" on your look calendar. Call us for appointment.

**E. S. JACKSON & CO., REALTORS**  
750 So. Woodward Phones 687-2139

We give your savings  
**STEADY EARNING POWER**

Plus **INSURED SAFETY.**  
Our savings investment plans give you more in earning power, with the safety you demand.

**BIRMINGHAM FEDERAL**  
Savings and Loan Association  
Woodward at Maple—Phone 1040  
Member of Federal Home Loan Bank System and Federal Savings & Loan Insurance Corporation