

# Want to Save Money? Read all about this Thriftier Way of Buying MEAT

## Customers' Corner

How do you like the checkout system in our stores? Have you any suggestions for improving it?

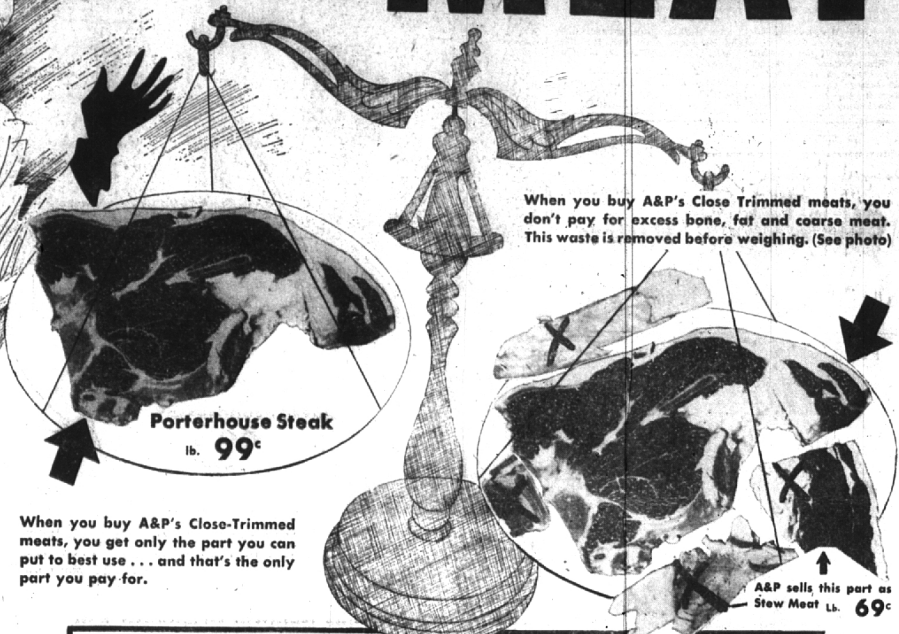
Our trained, efficient checkers make every effort to speed up the checking-out process and spare you any unnecessary delay.

But we admit that devising a checkout system that meets all the needs of all our customers at all times is one of our toughest problems.

We welcome any help you can give us in solving it.

What changes would you make in the checkout stands if you were running your A&P store? Please write:

Customer Relations Department,  
A&P Food Stores, 420 Lexington Avenue,  
New York 17, N. Y.



When you buy A&P's Close Trimmed meats, you don't pay for excess bone, fat and coarse meat. This waste is removed before weighing. (See photo)

When you buy A&P's Close-Trimmed meats, you get only the part you can put to best use . . . and that's the only part you pay for.

A&P sells this part as Stew Meat Lb. 69¢

## A&P TRIMS ALL CUTS BEFORE WEIGHING

HERE ARE A FEW TYPICAL EXAMPLES . . .



CHOPS

Long tails and excess bone are removed from lamb, veal and pork chops before weighing.



STEAKS

Stew meat (tail), excess fat and bone are removed before weighing.



RIB ROAST

Short ribs, 2 heavy blade ribs and excess chine bone are removed before weighing.



LEG OF LAMB

Shin bone, flank meat, tail and excess fat are removed before weighing.

## HOT HOUSE TOMATOES



At Their Peak of Goodness  
U. S. No. 1—  
Medium Size Lb. **33¢**  
8 Pound Basket **2.48**

Florida Sweet Juicy Ripe, 24-Lb. Avg. **Watermelons 1.19**  
Cuban Pineapple Sugar Sweet Each **19¢**  
Ripe Tomatoes Southern Grown 2 14-Oz. Pkgs. **35¢**  
Golden Ripe Bananas Lb. **16¢**

California Grown Big Luscious  
**Bing Cherries Lb. 29¢**  
Head Lettuce Large Crisp 48 Size 2 Heads **25¢**  
Fancy Cucumbers 3 For **25¢**  
New Cabbage Southern Grown Lb. **6¢**

## JANE PARKER DONUTS



Deluxe Recipe Pkg. of 8 **23¢**  
Soft Textured White Sliced  
**Marvel Bread 1 1/2 Lb. Loaf 18¢**  
Daffodil Angel Food

Delicious Spring Bakery Treat  
**Rhubarb Pie Each 39¢**  
Capri Cup Cakes Chocolate Filling Pkg. of 6 **29¢**  
Sponge Layer Cake Lemon-Lime Frosting Each **39¢**  
Marvel Pound Cake Large Size Each **45¢**

**Bar Cake . . . Each 39¢**  
Raisin Coffee Cake . . . Each **35¢**  
Whole Wheat Bread Marvel 100% Loaf **17¢**  
Potato Chips Jane Parker Crispy Fresh Lb. Tin **75¢**

## Sultana FRUIT COCKTAIL



Fresh Fruit Flavor 29-Oz. Can **29¢**  
Fine for Summer Salads

College Inn Tender  
**Whole Chicken . . . 3 1/2 Lb. 1.69**  
Iona Golden Unpeeled Halved  
**Apricots . . . 25-Oz. Can 19¢**  
Peanut Butter Ann Page Creamy Smooth Lb. Jar **37¢**  
Rajah Salad Dressing Qt. Jar **39¢**  
Sultana Stuffed Olives 13-Oz. Jar **29¢**  
Corn Flakes Sunnyfield Giant Pkg. **22¢**  
Wheaties Delicious Breakfast Food 12-Oz. Pkg. **21¢**  
8 O'Clock Coffee Lb. Bag 40¢ 3-Lb. Pkg. **1.15**  
White House Milk 3 Tall Cans **35¢**

Del Monte—Chunks  
**Pineapple . . . 25-Oz. Can 29¢**  
Iona Tomatoes New Pack 2 19-Oz. Cans **25¢**  
Pork & Beans Ann. In Tomato Sauce 3 16-Oz. Cans **29¢**  
Prepared Spaghetti Ann Page 2 32-Oz. Cans **35¢**  
Tomato Ketchup Indiana Brand 2 14-Oz. Botts. **19¢**  
dexo Shortening 3 Lb. Can **79¢**  
Iona Tomato Juice 44-Oz. Can **19¢**  
Waldorf Tissue 2 Rolls **13¢**

## JUNE IS DAIRY MONTH

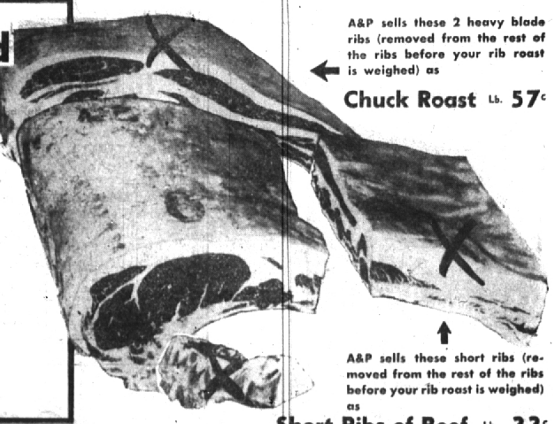
Wildmore Fresh Creamery  
**Butter . . . Lb. 59¢**  
Kraft's Cheese Spreads 2 5-Oz. Jars **45¢**  
Ched-O-Bit Cheese Food 2-Lb. Loaf **69¢**

Sunnybrook Large Grade "A"  
**Fresh Eggs . . . Doz. In Ctn. 63¢**  
Chunk O' Gold Cheese Spread Lb. **59¢**  
Cream Cheese Philadelphia 2 3-Oz. Pkgs. **29¢**

## A&P's Close-Trimmed Prime Ribs of Beef

lb. **67¢**

When you buy A&P's Close-Trimmed ribs of beef, the only part you pay rib roast prices for is the tender, juicy heart of the roast. The short ribs, which are not as tender as the rest of the ribs and should be braised and not roasted, are sold separately at a lower price per pound.



A&P sells these 2 heavy blade ribs (removed from the rest of the ribs before your rib roast is weighed) as **Chuck Roast Lb. 57¢**

A&P sells these short ribs (removed from the rest of the ribs before your rib roast is weighed) as **Short Ribs of Beef Lb. 33¢**

## OTHER DELICIOUS CLOSE-TRIMMED "SUPER-RIGHT" MEATS

**Frying Chickens Fresh Dressed Lb. 47¢**  
**Hams Smoked or Cooked Shank Portion Lb. 57¢**  
**Ground Beef All Lean Fresh Beef Lb. 57¢**  
**Sliced Bacon Lean Slices Lb. 53¢**  
**Dressed Blue Pike No Waste Pan Ready Lb. 35¢**  
**Fresh Haddock Fillets Lb. 43¢**  
**Herring Fillets Ready to Fry or Boil Lb. 25¢**

**Picnics Small, Lean Smoked Cooked Lb. 47¢**  
**Chuck Roast All Choice Cuts Lb. 57¢**  
**Skinless Frankfurters 100% Pure Meat Lb. 55¢**  
**Pork Roast Boston Butt Practically Boneless Lb. 57¢**  
**Cod Steaks Pick-of-the-Catch Deep-Sea Flavor Lb. 39¢**  
**Dressed Herring Broiled or Fried They're a Taste Treat Lb. 25¢**  
**Shrimp Medium Size Especially Fine Tasting and Detectable Lb. 69¢**

LIKE SEA FOOD? THEN COME TO A&P'S FISH DEPT.

