

A&P THINKS SHORT RIBS ARE WONDERFUL, BUT DOESN'T CHARGE RIB ROAST PRICES FOR THEM!

They're Removed From Rest of Rib Before Roast Is Weighed, and Sold at Lower Price Per Pound



Customers Corner



Please don't keep your complaints about either the food or service you get in A&P stores to yourself. Tell them to us!

We know that most people are not letter-writers. If something doesn't please them about a store they simply take their trade elsewhere.

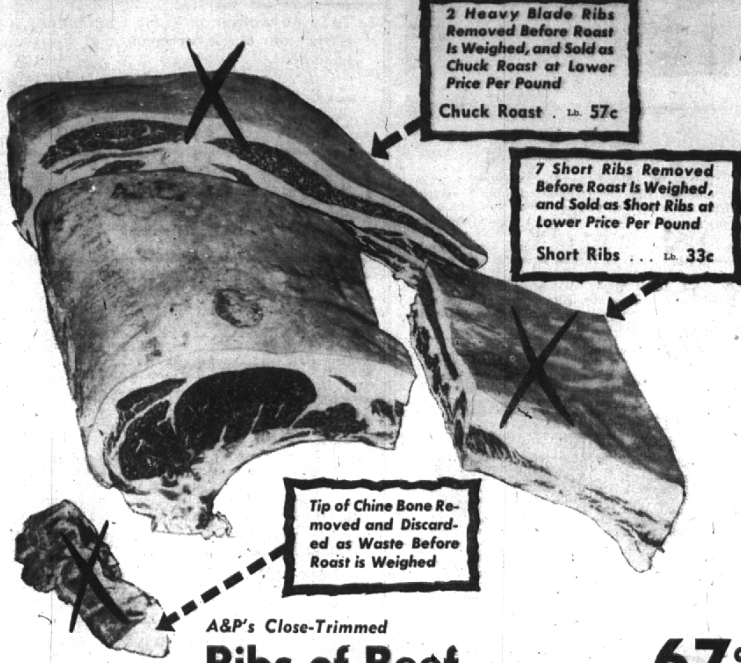
We don't want that ever to happen in our stores.

The men and women of A&P try to give you always the best food, the best values and the best service.

But perhaps we fail you once in a while; and in any case there is always room for improvement.

You will be helping us make your A&P store a better place to shop if you will let us have your complaints and suggestions.

Please write:
Customer Relations Department,
A&P Food Stores,
420 Lexington Avenue,
New York 17, N. Y.



Ribs of Beef Lb. 67c

Baseball Tournament For Adams Cubs Won By Den 9 Saturday

Den 9 of the Adams school Cubs came out the winner by a 16-8 score last Saturday afternoon at Springdale Park, bringing the hotly-contested baseball tournament to a close. Den 2, who faced them in the finals, was short one of their star players and somewhat demoralized by his illness. Neither team had tasted defeat before this season.

After the ball game, a program of games and races had the boys ready for their picnic supper, at which they were joined by their families.

A big award ceremony was held after the supper, when four boys became Webelos, top honors in Cubbing. Three, Tom Keigel, David Sutton and David Masterson, were from Den 9, with John Buick from Den 6 also being honored.

Richard Lester was general chairman of the affair, with Larry Quinn in charge of food; J. E. Kennell, the baseball game; Harvey Greene, games and Robert Silbar and C. V. Crockett, prizes.

Walt Allison, Caltrider's first baseman, had two hits in four times at bat and four runs batted in to lead the Blue and White team. Only 27 men faced Reynolds as he received excellent fielding support from his teammates. Mauris Germaine had 5 strikeouts but his 5 walks contributed to his downfall.

Michigan Bell Telephone got 3 runs on 3 hits in their contest with Summer Motor Sales in the Monday night game and passed their rivals in the standings as Raymie McBride came up with a 3-0 shut-out. He struck out the side in the second and sixth innings and had a total of 12 whiffs.

YMCA Camp Notes 20th Anniversary

Camp Man-to-to-haw-see, the Oakland County YMCA camp, celebrates its 20th season with its opening June 29. Many of those registered this year are second generation campers and in celebration of the anniversary visitors' days will really be special events when "old camper" dads visit their "new camper" sons.

The camp is situated near Hale, Mich., comprises over 400 acres with over a mile of shoreline on Loo Lake. Adjacent to the camp property is the Huron National Forest.

The camp is organized into three sections, the 8-9-10 year olds, the 10-11-12 year olds and the 13-14-15 year olds. Each section is headed by a supervisor who is experienced in working with youth and in camping. Each cabin group consists of seven boys and an adult counselor.

Full-time waterfront director, Howard Summers of Birmingham. He is assisted by five college men who hold senior Red Cross life saving certificates. In addition the camp maintains a full time registered nurse who lives in camp, a doctor on call, a riding master, and ample camp help.

Among the special program features for this 20th season are the big 200 mile canoe trips, the three to four day Upper Peninsula truck trips, plus a regular camp activities.

At a recent board of directors meeting it was decided that the board would hold a special meeting in camp in July to celebrate the anniversary. Also one of the regular visitors' days will be named 20th Anniversary Day, when Birmingham and Oakland county citizens who participated in the building of the Camp will come to see the camp in action.

Camp Man-to-to-haw-see, a member of the Michigan Camping Association, National Rifle and National Archery Association, is owned and operated by the Oakland County YMCA Camp, Inc., licensed by the Michigan State Welfare Department and inspected and approved by the State Board of Health.

Board members from Birmingham are John D. Maynard, Ernest Seaholm, Dr. John Ormond and Charles Shafer.

Members of the Birmingham Kiwanis club held their regular dinner meeting at the Community House Tuesday, with William Breech of the Great Lakes Tractor company as guest speaker.

Breech told of the part machinery plays in modern farming and of the importance of farming and agriculture in this economic world.

It was announced that there will be an inter-club meeting with the Perole-Kiwanis at the Lutheran church there next Wednesday evening, June 22.

Drop To Caller

Bob Roth's home run between the center and right fielders, with two aboard, accounted for one of Craig's runs in the seventh inning as they tried desperately to overcome a five run lead. The loss pushed Craig's in the cellar in the league standings as they are still awaiting their first win.

Great Lakes Suburban Greyhound Birmingham Men 0-8 at Torry Field when Renick Greyhound first baseman, hit the longest home run of the year with two mates aboard. Greyhound's 8 hits were coupled with 14 walks to pave the way for their victory. Hugh Loveland, Birmingham third baseman, had two hits in four times at bat.

W. A. Caltrider met Birmingham Men Tuesday evening at Torry Field. The score of this game was not available at press time.

Games tonight, which start the second round of play, are Greyhound opposing Birmingham Men at Howarth Park; Summer Motor Sales hosts to W. A. Caltrider at St. James field; Craig's Sporting Goods plays second-placed Michigan Bell Telephone at Torry Field. All games start at 8:30 p.m.

Highway Deaths Lower for First Time in Months

First break in the upward traffic accident fatality trend which began in Michigan last November was recorded during April, when 92 persons lost their lives, or 17 fewer than in the same month of the previous year.

The monthly statistical report of the Michigan State Police shows, however, 2,926 persons injured in April, a gain of six per cent over April of last year. 581 reported accidents, an increase of eight per cent.

Deaths decreased in urban centers and on rural trunklines, but increased on county routes. Nearly all of the net decrease in rural areas was due to fewer collisions and run-off-roadway accidents, but this was partly offset by a sharp gain in rural pedestrian deaths.

Deaths Increase

During the first four months of this year 395 persons have been killed and 11,164 injured in 441 reported accidents. Compared with the same period last year, deaths were up 41 or 12 per cent, injuries increased 373 or four per cent, and reported accidents dropped 2,521 or five per cent.

All of the increase in deaths occurred in rural areas. The figures for urban areas remaining unchanged.

Mileage for the first three months of the year was up three per cent over the same period of 1948, and the death rate per 100 million miles of travel increased 10 per cent.

Have You Met? . . .

Mr. and Mrs. Bradlee Pruden and their daughter, Margie, who have moved from South Bend, Ind., to 491 Hanna Mr. Pruden is with Giffels and Vallentyne.

Have You Met? . . .

John E. Martin, Assistant U.S. District Attorney at Law, Suite 200, Federal Bldg., Detroit 20, Michigan.

STATE OF MICHIGAN—The Probate Court for the County of Oakland.

In a session of said Court, held at the Probate Office in the City of Pontiac, in said County, on the 3rd day of June, A. D. 1949.

Present: Hon. Arthur E. Moore, Judge of Probate, in and of the County of Oakland, C. J. Giffels, Clerk.

Kathryn D. Pruden, administratrix of the estate of Bradlee Pruden, deceased, petitioner, prayed for and obtained an order of said Court, appointing said petitioner to receive, examine and adjust all claims and demands against said estate and before said court, to be held on the date hereinafter allowed for creditors to present claims against said estate.

Order was granted, that the 6th day of June, 1949, be and is hereby appointed, and said order is and is hereby appointed, that the examination and adjustment of all claims against said estate.

ARTHUR E. MOORE, Judge of Probate.

Pure Vegetable dextro Shortening

3 Lb. Can 79c

- A&P Healthful Delicious
- Grapefruit Juice 46-Oz. Can 25c
- Del Monte—Chunks
- Pineapple 30-Oz. Can 29c
- Iona Halved Peaches 29-Oz. Can 39c
- Crushed Pineapple 30-Oz. Can 29c
- Iona Green Peas 30-Oz. Can 29c
- Niblets Golden Corn 12-Oz. Whole Kernel 31c
- Ann Page Mayonnaise 12-Oz. Jar 35c
- Ann Page Salad Dressing 12-Oz. Jar 25c
- Lang's Dill Pickles 12-Oz. Jar 19c
- Our Own Tea 1/2-lb. Pkg. 47c
- Our Own Tea Bags 16-Pk. Pkg. 15c
- Scott Tissue 3 Rolls 29c
- Baker Maid Cookies 10-Oz. Pkg. 27c
- Bull Dog Bluing 5-Oz. Pkg. 8c
- Woodbury's Soap Bath Size 2 Banded Cakes 19c
- Sta-Flo Liquid Starch 8-Oz. Qt. 22c

June Is Dairy Month

CHEESE FOOD
2 Lb. 69c

- Fresh Eggs Sunnybrook, Large in Ctn. 64c
- Wildmere Butter 1-lb. Pkg. 59c
- Wisconsin Cheddar Cheese 1-lb. 45c
- Brick or Muenster Cheese Wisconsin 1-lb. 41c
- Wisconsin Longhorn Cheese 1-lb. 49c
- Sliced Mel-O-Bit Processed Cheese 1-lb. 47c

Hot House Tomatoes

Medium Size U.S. No. 1 Lb. 25c
8-Pound Basket 1.89

- Luscious California Bing Cherries . . . Lb. 29c
- California Beauty Sweet Plums . . . 2 Lb. 39c
- Florida Fancy Cucumbers . . . 3 For 25c
- New Cabbage Southern Grown 1-lb. 5c
- California Cantaloupes 27 size 45c Jumbo 24 size 35c
- Golden Ripe Bananas . . . Lb. 16c

Jiffy-Fix Frozen Foods

- Minute Maid Fresh Frozen Orange Juice . . . 6-Oz. Can 29c
- Green Peas Birdseye or Honor Brand 12-Oz. Pkg. 25c
- Strawberries Montz or Fairmont 12-Oz. Pkg. 39c

Father's Day Straw Hat Cake

Each 75c

- Surprise Dad With This Delicious Devils Food Layer Cake . . . Large Size 89c
- For Dad—Hat Shaped Home Made Cookies Over 2 Doz. in Pkg. 29c
- Iced Donuts Coconut-Vanilla or Choc. Frosted 12-Pkg. 15c
- Marvel Bread Soft Textured White Sliced 24-Oz. Loaf 18c
- Potato Chips Jane Parker Crispy, Fresh 1-lb. 75c

Fresh Dressed Frying Chickens

Lb. 45c

Plump, Fine For Fricasoleing Stewing Chickens

Lb. 47c

100% Meat Product—Skinless Frankfurters

Lb. 53c

Lean, Rindless Sliced Bacon

Lb. 53c

Ring or Large—By the Piece—All Meat Product Bologna

Lb. 49c

Spare Ribs Lean and Meaty

Lb. 49c

Smoked Picnics or Ready-to-Eat

Lb. 47c

Liver Sausage Smoked or Fresh

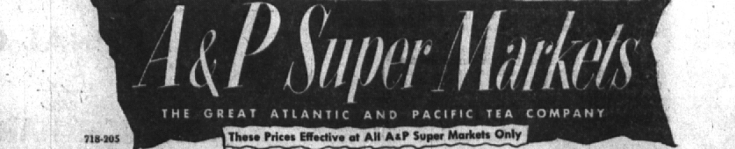
Lb. 55c

Bacon Squares

Lb. 27c

Fish for Every Taste at A&P

- Whiting Headed and Dressed . . . Lb. 17c
- Halibut Steak . . . Lb. 39c
- Dressed Blue Pike . . . Lb. 35c
- Fresh White Fish . . . lb. 45c



These Prices Effective at All A&P Super Markets Only

- One Cent Offer
- Blu-White 3 Reg. 27c Buy 3 Pkg. at Reg. Price Get 1 for One Cent
- Swift's Meats Strained Chopped 2 3/4-Oz. Can 39c 5-Oz. Can 28c
- Make Rich Noodle Soup Lipton's Soup Mix 3 3-Pkg. 35c
- Molasses-Coated Pop Corn Cracker Jack 3 Pkg. 13c
- Golden, Plump, Tender Butter Kernel Corn 2 1/2-Oz. Can 33c
- Half Price Offer
- Lifebuoy Soap 2 Handled Cakes 19c Buy 1 Both Size Cake or Regular Price, Get One for Half Price

COWBOY'S DREAM—How're you gonna keep 'em down on the ranch after they're camp Penney? Features a western motif, emphasizing the lure of the wide open spaces.