

Just because a man gets elected, one must not assume that he is 100 per cent honest. Fortunately, most public officials are honest—but now and then one gets in who is about as ethical as a capable burglar.

The Birmingham Eccentric

GARAGES

FRAME — BRICK — BLOCK
14 x 20 Garage \$364 20 x 20 Garage \$545
We Do Cement Work
Porches, Stairways, Sidewalks
STUART E. SHELL
1501 PENISTONE ROAD
BIRMINGHAM
PHONE 532 FHA TERMS

THANKS . . .

TO THE PEOPLE OF THIS COMMUNITY FOR THEIR SPLENDID PATRONAGE.

W. C. LILLEY & SONS

COMPLETE REPAIR SERVICES

IN THE FOLLOWING:

Heating, Plumbing, Furnaces, Air-Conditioning
Commercial Refrigeration
Stokers and Oil Burners

FREE ESTIMATES

Reasonable Prices—All Work Guaranteed

32 Years Engineering and Contracting, City of Detroit
Reputation and Experience Now Offered Here

Remember our Phone Numbers

B'HAM 3770 or 2316-J

750 BIG BEAVER RD. AT ADAMS

ASPHALT ASPHALT

"Dress Up Your Driveway"

WITH ASPHALT PAVEMENT

"IT LASTS A LIFETIME—
BY FAR THE CHEAPEST"

We specialize in Residential and Commercial Driveways—Parking Lots—Tennis Courts.
New Construction or Re-surfacing for Heavy Industrial Traffic.
Free Estimates

A & A ASPHALT PAVING CO.

1045 Haynes Street

Phone 3355

We DO
GRADING—EXCAVATING and
BULLDOZER SERVICE

NEW

Subdivision Work—Gravel or Stone Road.
Also Our Specialty.

CONCRETE WORK
ALL TYPES ASPHALT

QUALITY PANELLING AND WALL BOARDS

New, Beautiful Leather Grain
Wall Board
4 x 10 Sheets, 1/2" thick

Knotty White Pine Sheetrock
4 x 8 — 3/8" thick

Ivory Celotex
4 x 8 — 1/2" thick

Rippled Celotex Ceiling Tile
12 x 12 — 16 x 16 and 16 x 32 — 1/2" thick

Wall Plank
6" - 8" - 10" - 12" and 16"
all width 3 ft. long

Knotty White Pine
V-Edge and Molded Edge
Panelling

Knotty Cedar
V-Edge Panelling

LAWSON & SON

484 Forest

Phone 111

BUILDERS' SUPPLIES

OPEN 7:30 A.M. TO 5:00 P.M.

We Close at 3:00 P.M. Saturdays

Youngsters Learn Bike Court Has No Vacation Days

The bicycle court, thought by many to be a school-time affair, does not take a vacation. Several young riders have made this painful discovery since school closed as they received their tickets and appeared before Sgt. Henry Timm, acting judge and jury.

During the school year each school maintained its own court, presided over by students. Here the cases were heard and the punishment meted out. That it was a year-round project did not enter a lot of minds—but they learned.

Sgt. Timm, head of the city's safety program, estimates that over 200 bike tickets have been issued since the idea started last fall. Of these only 12 have appeared as second offenders, speaking well of the impression which the court makes on those who appear as offenders.

SIX SENTENCES

Offenders who appear before the sergeant are receiving much the same penalties as those meted out by their schoolmates. Some are asked to write 250 word essays on safety, based on the booklet "Do's and Don'ts of Bicycling." In other cases the "off" turns to the field of art, and the offender is given a 3 x 3 foot poster on which he must illustrate the various phases of his own violation. Needless to say, the latter punishment is quite a job. According to reports, it usually represents a half-day's work. This, a favorite of the offending cyclist with a very deep impression of his error, and a deep conviction that he's not going to do it again, Timm reported.

The program received the whole-hearted support here of clubs, schools, parents, law enforcement officers and business men. The possibilities of it, to protect children today and create better drivers for tomorrow, was seen at a glance. Working with the cooperation of the regular Safety Patrol boys in the schools, it has served a great need in Birmingham, with bicycles being involved in a minimum of accidents since its inception.

NATIONAL FAME

Believed to be the first program of its kind in the nation, the Birmingham Bicycle Safety Program has received national attention. The local Lions Club, which backed it at the start, along with the several other groups, spread the word of its work through their publications. Through them, Sgt. Timm has received requests from many distant cities and schools.

F. R. Pierce Heads United Foundations' Coming Fund Drive



F. R. Pierce

Frank R. Pierce, 421 Arlington, has been named chairman of the United Foundations' fund-raising campaign to be held this fall. The announcement was made last week by John S. Coleman, president of the Foundation.

Pierce is one of the founders and officers of Dearborn Motors, whose new plant is being opened on East Maple road, here.

He accepting the appointment, he said that the campaign, which will open on Oct. 18, is one of the greatest systems ever introduced into this section for the contribution of funds for underprivileged and needy persons.

Have You Met? . . .

Former Detroiters, Mr. and Mrs. L. J. Brown and their daughters, Barbara and Carol Ann who are making their home at 1816 Crawford? Mr. Brown is with the Murray Corporation.

systems for full information on its operation.

Local youngsters are high in their praise, also. One lad, who became a second offender shortly after the courts were started, said he had learned his lesson. He is now among one of the self-appointed vigilantes who draw the attention of offenders to their shortcomings. It's not uncommon in Birmingham, to hear one biker-riding youngster call out to another, "Hey! That's against the law. First thing you know you'll end up in court!"

If It Runs . . . And It Does, It Must Be An Automobile

by Alice Morgan

We regret that time did not permit waiting for the owner to return to enable us to give details on mileage, speed, etc., but we will report Birmingham's newest automobile to the best of our ability, without those pertinent facts available.

It was parked on Pierce street Thursday afternoon, and collecting quite a crowd of avid motor-fans around it.

The very smart chassis consisted of two pieces of angle iron probably four or five feet long. A regulation steering wheel, complete with a steering button was attached to the front wheels in a more or less orthodox manner.

The left hand side was adorned by what we believe was a brake lever, or might have been a gear shift. On the right, connected to the motor by a substantial wire, was the accelerator pedal.

A V-type belt from the motor to one rear wheel supplied the power to this 1949 stream-liner. The seat reminded us of the Model T motor car, but we were in our much younger days, and we heartily suspect that was its origin.

The wheels, about nine or ten inches in diameter, were of the balloon-tire type, with nice new treads, showing either wonderful

durability or very little mileage.

It is a rear-motor job, with the motor mounted on a small platform behind the seat. One "inspector" said it was an outboard motor, while we harbor the suspicion that it had done its original duty on a lawnmower. A washing machine was also suggested, but we don't agree with that, either.

Two us, one of the most outstanding features was the lack of parts. There were no lights to burn out on dark nights. No fenders to reach out and snag on garage doors and trees and other cars. No windshield to get all dusty and smeared up with bugs, causing some hard-hearted police officer to suggest acidity that you go and have it cleaned off.

The whole affair was nattily upholstered with a couple of old rag rugs.

As we said before, we're sorry the owner did not return soon enough for us to give all the details as to the comfort of the car, its safety features, economical operation, ease of handling, and above all, the fact that it can be packed so easily. However, we have done the best we could, and sincerely hope you will bear with this shortcoming in this, the preview of the 1949 Birmingham Coaster.

Detroit Lions Move Into New Quarters; Open Schedule Soon

According to an official announcement, the Detroit Lions football club will move their offices from the Tuller hotel to their new quarters near Briggs stadium this week. Constructed for the Lions by Gordon Wilson, Detroit automobile dealer, the new building will house the main office, staff quarters and will provide a storage and projection room. Located at 1401 Michigan avenue, the single-story steel structure contains more than 3,000 square feet of office space. The Lions reportedly hold a long-term option with the right to purchase the building in later years.

On Aug. 1, "Bo" McMillin, Lions coach, will take his team into camp at New York State Normal College. This marks the first time in 16 years that the team has trained on a state-supported school field. The past three seasons have seen them at Alma college, a privately endowed school.

McMillin informed the press that he plans to take the full limit of 50 players into camp, and will have but 17 days training before opening a seven-game exhibition schedule with an intra-squad game in Detroit.

Other games in this schedule include one on Aug. 20 at Wilkes Barre; Aug. 23, at Michigan Buildings at Hershey, Pa.; Aug. 30, Washington at Denver, Colo.; Sept. 3, Philadelphia at New Orleans; Sept. 10, Pittsburgh at Roanoke, Va.; Sept. 18, New York Giants at Minneapolis.

Have You Met? . . .

Mr. and Mrs. Hugh C. Bailey, formerly of Detroit, and who are living at 1677 Stanley? Mr. Bailey is with the Pilgrim Drawn Steel corporation.

June Construction Double 1948 Figure; 91 Dwellings Planned

The report of E. S. Clark, acting building inspector for the City of Birmingham, shows that permits issued during June were double the amount of the same period last year. The first six months of 1949, however, are \$725,906 lower than the 1948 period.

Current permits include 17 new single family residences at \$177,800; four new terraces, with a total of 74 units, at \$490,000; one new business building, \$850; school addition, \$185,000; four new private garages, at \$240,000; alterations on 14 single dwellings, \$14,935; business block alterations, \$9,500 and one new foundation, \$125. The entire project totals \$811,140.

Each Tuesday at 5 p.m. is the deadline for news, society, classified and display ads.

SCREENS AND STORM SASH
• WINDOWS ALL SIZES
• CUPBOARD DOORS
• FLUSH DOORS
WOODCRAFT CO.
1184 Grant at Ruffner

SUBURBAN
WINDOW CLEANERS
ARTHUR ZEL
Birmingham Phone 2106
1619 Cele

THE J. L. HAYS
CONSTRUCTION COMPANY
Commercial & Industrial
Building
Birmingham Ph. 1151

ARE YOU PAYING OVER 4 1/2% INTEREST TO FINANCE YOUR COUNTRY HOME?

See Us About a 4 1/2% Mortgage With Up to 20 Years to Pay.

NO

YOUR ONLY COST is the usual abstracting and recording expense.

BENJAMIN and STEPHENS, INC.

255 S. WOODWARD — Realtors — BIRMINGHAM
PHONE 4129 JORDAN 4-7132

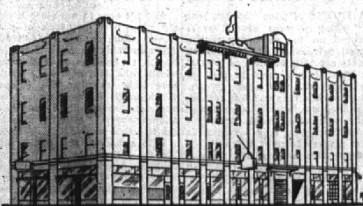
SHINGLE STAINING



APPLIED BY
PRESSURE BRUSH
INCLUDES
COMPLETE
ROOF REPAIR

PHONE BIRMINGHAM 2080
W. P. Hickman Company

1360 EAST MAPLE ROAD — BIRMINGHAM



You Are Cordially Invited to Inspect
OUR MODERN STORAGE
Built Especially to Store Household Goods
LOCAL AND LONG DISTANCE MOVING
CAUKLER STORAGE CO.
9 Orchard Lake Ave., Pontiac, Mich.
Phone Birmingham 10240

DANDELION AND WEED CONTROL

WITH 2-4-D FOR BEAUTIFUL LAWNS



EMIL G. OLIN
LANDSCAPE FORESTER
607 Southfield Rd. Phone B'ham 1051

"GLAD IT WASN'T MY PROPERTY!"

That probably was your relieved thought after the recent fire in your neighborhood. But suppose it had been your property. Would you have had enough Fire Insurance to replace ALL of your property?

Let's reassure you on that point by checking over your insurance, now. No obligation. No cost. No pestering. Phone—Write—Call.

Hugh C. White Agency

217 Pierce Street
(Opposite Municipal Building)
Birmingham, Michigan
SERVICE AS NEAR AS YOUR
TELEPHONE BIRMINGHAM 3302-3303
—INSURANCE SINCE 1920—

ELIMINATE DAMPNES

In Your Basement and Other Rooms

with the
"DRYAIR" DEHUMIDIFIER

A MECHANICAL WONDER
COMPLETELY AUTOMATIC
NO FUSS NO OTHER
RESULTS GUARANTEED—WRITE OR CALL
Detroit Development and Mfg. Co., Inc.
FRASER, MICHIGAN
Phone, Roseville 4110



DRIPNOT



Toilet Tank Tray
PREVENT
DISCOLORING
LOOSENING
ROTting
OF
BATHROOM FLOORS
\$2.45 up
HUSTON HARDWARE CO.
"OUR FORTIETH YEAR"
205 N. Woodward Phone 110

GAS HEAT

Is Now Available to You
If You Have An Approved Permit
HAVE YOUR GAS EQUIPMENT
INSTALLED BY A
LOCAL ESTABLISHED CONTRACTOR

Joseph B.
MOERY
1728 W. Maple
Near Chesterfield
PH. 1510

We're Selling
Our USED CARS
At Low Prices

See Your
FORD Dealer!