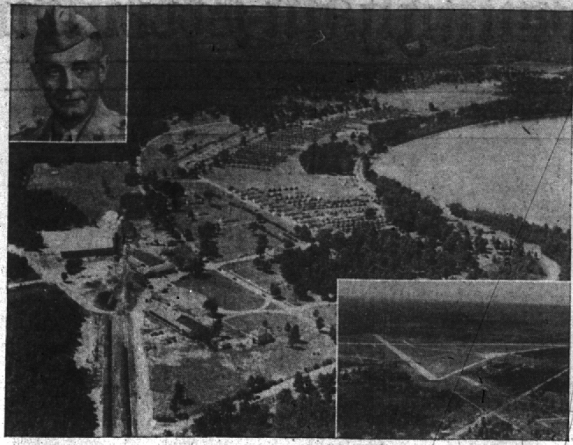


Where the Guard Will Gather



Several Birmingham and vicinity men will be among the 8,000 'dough foots' of the 46th Infantry division...

Softball Teams Go Into Final Rounds

The Birmingham YMCA-City Recreation Softball League begins its fourth and final round of play this coming Monday.

At the conclusion of this round the rankings and play-off opponents of the member teams will have been established.

August 1 Birmingham Men vs. Sumner at St. James, Caltrider vs. Michigan Bell at Terry and Greyhound vs. Craig's at St. James.

August 4 Birmingham Men vs. Michigan Bell at Terry, Great Lakes vs. Sumner at Howarth and Craig's vs. Caltrider at St. James.

August 8 Birmingham Men vs. Craig's at Howarth, Sumner vs. Michigan Bell at St. James and Caltrider vs. Great Lakes at Terry.

August 11 Birmingham Men vs. Great Lakes at St. James, Caltrider vs. Sumner at Howarth and Michigan Bell vs. Craig's at Terry.

August 15 Birmingham Men vs. Caltrider at Howarth, Sumner vs. Craig's at Terry and Michigan Bell vs. Great Lakes at St. James.

The first team mentioned in each case will be the home team. They will furnish a new No. 100 Harwood softball.

Police Pistol Team

A five-man team will represent the Birmingham Police department at its first official competition on the new range at J...

General news deadline is 5 p. m. each Tuesday.

Play Safe This Winter

Have all your warm and cold air pipes, and registers cleaned out to eliminate dirt, germs, moths, etc., that may harm your family.

United Furnace Co. Sales and Service Inquire Today Ph. 2929

Juvenile Crime Wave Halted by Faulty Taillight

A defective taillight brought to a halt a local juvenile crime-wave which had reached intense proportions during the last two weeks.

At 2:30 Monday morning Royal Oak Township police stopped a car on Rochester road to tell the driver his taillight wasn't working.

The girl, Patricia Bishop, 19, of 711 Dewey, Royal Oak, was removed to the county jail in Pontiac for further questioning.

B'ham Men Take Top Spot In City Softball League

Birmingham Men stretched their league lead to two full games in the second half of the Birmingham YMCA-City Recreation softball league by virtue of a 14 to 2 win over Craig's Sporting Goods.

Therein, playing first base, had a grand slam home run to left field in the second inning. Joe Kiley had three hits in four trips to the plate to lead Birmingham's attack.

Sonny Bodnar pitched the second no-hit game of the year when he faced out 22 Great Lakes Suburban Greyhound players as Birmingham Men won 12 to 1.

Raymie McBride, on the mound for Michigan Bell Telephone, gave up a first inning single to Tom Roth of Craig's Sporting Goods and then held the red jersey nine hitless from there in.

Three Games Tonight

Games tonight feature W. A. Caltrider against Birmingham Men at Howarth Field; Craig's Sporting tangles with Sumner at Terry Field; Great Lakes Suburban Greyhound meets Michigan Bell Telephone at St. James Park.

Team Standings table with columns for Team, W, L, Pct.

The Birmingham Eccentric

Published every Thursday at Birmingham, Ala., in the Commercial Building, 222-224 North Woodward Ave. Telephone BR 1-1244

Subscription Rates

Subscription Rates table with columns for Term, Price.

GAS HEAT

We manufacture the only A.G.A. approved burner in Oakland county, F.H.A. terms. Factory guaranteed. Immediately delivery. See burner at factory.

NO MONEY DOWN LET US GIVE YOU THE FACTS AND FIGURES CALL

RITE-WAY Softener Service

467 S. WOODWARD PHONE 2512

Several Birmingham and vicinity men will be among the 8,000 'dough foots' of the 46th Infantry division...

Several Birmingham and vicinity men will be among the 8,000 'dough foots' of the 46th Infantry division...

Several Birmingham and vicinity men will be among the 8,000 'dough foots' of the 46th Infantry division...

Several Birmingham and vicinity men will be among the 8,000 'dough foots' of the 46th Infantry division...

Several Birmingham and vicinity men will be among the 8,000 'dough foots' of the 46th Infantry division...

Several Birmingham and vicinity men will be among the 8,000 'dough foots' of the 46th Infantry division...

Several Birmingham and vicinity men will be among the 8,000 'dough foots' of the 46th Infantry division...

Several Birmingham and vicinity men will be among the 8,000 'dough foots' of the 46th Infantry division...

Several Birmingham and vicinity men will be among the 8,000 'dough foots' of the 46th Infantry division...

Several Birmingham and vicinity men will be among the 8,000 'dough foots' of the 46th Infantry division...

Several Birmingham and vicinity men will be among the 8,000 'dough foots' of the 46th Infantry division...

Several Birmingham and vicinity men will be among the 8,000 'dough foots' of the 46th Infantry division...

Several Birmingham and vicinity men will be among the 8,000 'dough foots' of the 46th Infantry division...

Several Birmingham and vicinity men will be among the 8,000 'dough foots' of the 46th Infantry division...

Several Birmingham and vicinity men will be among the 8,000 'dough foots' of the 46th Infantry division...

Several Birmingham and vicinity men will be among the 8,000 'dough foots' of the 46th Infantry division...

Several Birmingham and vicinity men will be among the 8,000 'dough foots' of the 46th Infantry division...

Several Birmingham and vicinity men will be among the 8,000 'dough foots' of the 46th Infantry division...

Several Birmingham and vicinity men will be among the 8,000 'dough foots' of the 46th Infantry division...

Several Birmingham and vicinity men will be among the 8,000 'dough foots' of the 46th Infantry division...

Several Birmingham and vicinity men will be among the 8,000 'dough foots' of the 46th Infantry division...

Several Birmingham and vicinity men will be among the 8,000 'dough foots' of the 46th Infantry division...

Improved Service Started Monday by Greyhound Lines

Great Lakes Greyhound Lines inaugurated a new Suburban Line service between Pontiac and Detroit on Monday, July 25. It was announced by J. V. Murphy, general traffic manager...

Greyhound is providing this service in response to repeated requests of commuter passengers in Pontiac, Bloomfield Hills, Birmingham and the Greater North Ham area beyond Ten Mile Road, and downtown Detroit merchants. Murphy pointed out.

Provided on an experimental basis, Greyhound expects the service to bring about speedier bus transportation for Detroit shoppers and business commuters, and more comfortable travel for all passengers by relieving congestion on the other Greyhound schedules which will continue to operate over this route.

The Limited buses will make no local stops. Detroit-bound buses will stop only to pick up passengers at the Greyhound terminals in Pontiac, and Birmingham and Woodward Avenue at Bloomfield Hills (4 1/2 Mile Road) and 10 1/2 Mile Road and 10 1/2 Mile Road and 10 1/2 Mile Road.

Northbound passengers can board the Limiteds on Woodward Avenue at the corner of Jefferson, Cadillac Square, Grand River, Columbia, Amsterdam, Quette and Grand Boulevard, only when their destination is 10 1/2 Mile Road, 12 Mile Road, Birmingham, Bloomfield Hills or Pontiac.

Three round trip schedules will be operated experimentally. Southbound trips will be operated on Woodward Avenue at the corner of Jefferson, Cadillac Square, Grand River, Columbia, Amsterdam, Quette and Grand Boulevard, only when their destination is 10 1/2 Mile Road, 12 Mile Road, Birmingham, Bloomfield Hills or Pontiac.

Three round trip schedules will be operated experimentally. Southbound trips will be operated on Woodward Avenue at the corner of Jefferson, Cadillac Square, Grand River, Columbia, Amsterdam, Quette and Grand Boulevard, only when their destination is 10 1/2 Mile Road, 12 Mile Road, Birmingham, Bloomfield Hills or Pontiac.

Three round trip schedules will be operated experimentally. Southbound trips will be operated on Woodward Avenue at the corner of Jefferson, Cadillac Square, Grand River, Columbia, Amsterdam, Quette and Grand Boulevard, only when their destination is 10 1/2 Mile Road, 12 Mile Road, Birmingham, Bloomfield Hills or Pontiac.

Three round trip schedules will be operated experimentally. Southbound trips will be operated on Woodward Avenue at the corner of Jefferson, Cadillac Square, Grand River, Columbia, Amsterdam, Quette and Grand Boulevard, only when their destination is 10 1/2 Mile Road, 12 Mile Road, Birmingham, Bloomfield Hills or Pontiac.

Three round trip schedules will be operated experimentally. Southbound trips will be operated on Woodward Avenue at the corner of Jefferson, Cadillac Square, Grand River, Columbia, Amsterdam, Quette and Grand Boulevard, only when their destination is 10 1/2 Mile Road, 12 Mile Road, Birmingham, Bloomfield Hills or Pontiac.

Three round trip schedules will be operated experimentally. Southbound trips will be operated on Woodward Avenue at the corner of Jefferson, Cadillac Square, Grand River, Columbia, Amsterdam, Quette and Grand Boulevard, only when their destination is 10 1/2 Mile Road, 12 Mile Road, Birmingham, Bloomfield Hills or Pontiac.

Three round trip schedules will be operated experimentally. Southbound trips will be operated on Woodward Avenue at the corner of Jefferson, Cadillac Square, Grand River, Columbia, Amsterdam, Quette and Grand Boulevard, only when their destination is 10 1/2 Mile Road, 12 Mile Road, Birmingham, Bloomfield Hills or Pontiac.

Three round trip schedules will be operated experimentally. Southbound trips will be operated on Woodward Avenue at the corner of Jefferson, Cadillac Square, Grand River, Columbia, Amsterdam, Quette and Grand Boulevard, only when their destination is 10 1/2 Mile Road, 12 Mile Road, Birmingham, Bloomfield Hills or Pontiac.

Three round trip schedules will be operated experimentally. Southbound trips will be operated on Woodward Avenue at the corner of Jefferson, Cadillac Square, Grand River, Columbia, Amsterdam, Quette and Grand Boulevard, only when their destination is 10 1/2 Mile Road, 12 Mile Road, Birmingham, Bloomfield Hills or Pontiac.

Three round trip schedules will be operated experimentally. Southbound trips will be operated on Woodward Avenue at the corner of Jefferson, Cadillac Square, Grand River, Columbia, Amsterdam, Quette and Grand Boulevard, only when their destination is 10 1/2 Mile Road, 12 Mile Road, Birmingham, Bloomfield Hills or Pontiac.

Three round trip schedules will be operated experimentally. Southbound trips will be operated on Woodward Avenue at the corner of Jefferson, Cadillac Square, Grand River, Columbia, Amsterdam, Quette and Grand Boulevard, only when their destination is 10 1/2 Mile Road, 12 Mile Road, Birmingham, Bloomfield Hills or Pontiac.

Three round trip schedules will be operated experimentally. Southbound trips will be operated on Woodward Avenue at the corner of Jefferson, Cadillac Square, Grand River, Columbia, Amsterdam, Quette and Grand Boulevard, only when their destination is 10 1/2 Mile Road, 12 Mile Road, Birmingham, Bloomfield Hills or Pontiac.

Three round trip schedules will be operated experimentally. Southbound trips will be operated on Woodward Avenue at the corner of Jefferson, Cadillac Square, Grand River, Columbia, Amsterdam, Quette and Grand Boulevard, only when their destination is 10 1/2 Mile Road, 12 Mile Road, Birmingham, Bloomfield Hills or Pontiac.

Three round trip schedules will be operated experimentally. Southbound trips will be operated on Woodward Avenue at the corner of Jefferson, Cadillac Square, Grand River, Columbia, Amsterdam, Quette and Grand Boulevard, only when their destination is 10 1/2 Mile Road, 12 Mile Road, Birmingham, Bloomfield Hills or Pontiac.

Three round trip schedules will be operated experimentally. Southbound trips will be operated on Woodward Avenue at the corner of Jefferson, Cadillac Square, Grand River, Columbia, Amsterdam, Quette and Grand Boulevard, only when their destination is 10 1/2 Mile Road, 12 Mile Road, Birmingham, Bloomfield Hills or Pontiac.

Three round trip schedules will be operated experimentally. Southbound trips will be operated on Woodward Avenue at the corner of Jefferson, Cadillac Square, Grand River, Columbia, Amsterdam, Quette and Grand Boulevard, only when their destination is 10 1/2 Mile Road, 12 Mile Road, Birmingham, Bloomfield Hills or Pontiac.

Three round trip schedules will be operated experimentally. Southbound trips will be operated on Woodward Avenue at the corner of Jefferson, Cadillac Square, Grand River, Columbia, Amsterdam, Quette and Grand Boulevard, only when their destination is 10 1/2 Mile Road, 12 Mile Road, Birmingham, Bloomfield Hills or Pontiac.

Three round trip schedules will be operated experimentally. Southbound trips will be operated on Woodward Avenue at the corner of Jefferson, Cadillac Square, Grand River, Columbia, Amsterdam, Quette and Grand Boulevard, only when their destination is 10 1/2 Mile Road, 12 Mile Road, Birmingham, Bloomfield Hills or Pontiac.

Three round trip schedules will be operated experimentally. Southbound trips will be operated on Woodward Avenue at the corner of Jefferson, Cadillac Square, Grand River, Columbia, Amsterdam, Quette and Grand Boulevard, only when their destination is 10 1/2 Mile Road, 12 Mile Road, Birmingham, Bloomfield Hills or Pontiac.

Three round trip schedules will be operated experimentally. Southbound trips will be operated on Woodward Avenue at the corner of Jefferson, Cadillac Square, Grand River, Columbia, Amsterdam, Quette and Grand Boulevard, only when their destination is 10 1/2 Mile Road, 12 Mile Road, Birmingham, Bloomfield Hills or Pontiac.

Three round trip schedules will be operated experimentally. Southbound trips will be operated on Woodward Avenue at the corner of Jefferson, Cadillac Square, Grand River, Columbia, Amsterdam, Quette and Grand Boulevard, only when their destination is 10 1/2 Mile Road, 12 Mile Road, Birmingham, Bloomfield Hills or Pontiac.

Three round trip schedules will be operated experimentally. Southbound trips will be operated on Woodward Avenue at the corner of Jefferson, Cadillac Square, Grand River, Columbia, Amsterdam, Quette and Grand Boulevard, only when their destination is 10 1/2 Mile Road, 12 Mile Road, Birmingham, Bloomfield Hills or Pontiac.

Three round trip schedules will be operated experimentally. Southbound trips will be operated on Woodward Avenue at the corner of Jefferson, Cadillac Square, Grand River, Columbia, Amsterdam, Quette and Grand Boulevard, only when their destination is 10 1/2 Mile Road, 12 Mile Road, Birmingham, Bloomfield Hills or Pontiac.

Three round trip schedules will be operated experimentally. Southbound trips will be operated on Woodward Avenue at the corner of Jefferson, Cadillac Square, Grand River, Columbia, Amsterdam, Quette and Grand Boulevard, only when their destination is 10 1/2 Mile Road, 12 Mile Road, Birmingham, Bloomfield Hills or Pontiac.

Three round trip schedules will be operated experimentally. Southbound trips will be operated on Woodward Avenue at the corner of Jefferson, Cadillac Square, Grand River, Columbia, Amsterdam, Quette and Grand Boulevard, only when their destination is 10 1/2 Mile Road, 12 Mile Road, Birmingham, Bloomfield Hills or Pontiac.

Three round trip schedules will be operated experimentally. Southbound trips will be operated on Woodward Avenue at the corner of Jefferson, Cadillac Square, Grand River, Columbia, Amsterdam, Quette and Grand Boulevard, only when their destination is 10 1/2 Mile Road, 12 Mile Road, Birmingham, Bloomfield Hills or Pontiac.

bound, two of the schedules will originate in Pontiac at 6:45 a.m. and 7:45 a.m. and one in Birmingham at 7:32 a.m. Northbound schedules originate at the corner of Jefferson and Woodward Avenue at 4:40 p.m., 5:15 p.m. and 5:45 p.m.

The buses serving these schedules will be Greyhound's latest suburban type and will be identified by flags at each side of the windshield and a sign reading "Limited".

News and society copy must be in the Eccentric editorial office by 5 o'clock each Tuesday afternoon. Deadline for society club news is noon each Monday.

CITY OF BIRMINGHAM, MICHIGAN Notice of Special Assessment NO. 334

ETON ROAD ASPHALTIC CONCRETE

Notice is hereby given that Special Assessment Roll No. 334, heretofore made by the assessor for the purpose of defraying the cost of construction of Asphaltic Concrete Surface on Eton Road from Yorkshire to Derby, is now on file in my office for public inspection.

Notice is also hereby given that the Commission of the City of Birmingham will meet in the Commission Room in the Municipal Building in said City on Monday, the 8th day of August, 1949, at 8 P.M. to review said assessment, at which time and place opportunity will be given to all persons interested to be heard.

IRENE E. HANLEY City Clerk

Advertisement for Rexall Products featuring an image of a baseball player and the slogan 'it's a Homer'.

Advertisement for Rexall Drugs with the slogan 'It's safe at home' and an image of a medicine bottle.

Advertisement for SHAIN'S Rexall DRUGS with the slogan 'REXALL FOR RELIABILITY'.

Advertisement for Bigger Buys in BETTER FOODS with an image of a woman.

Advertisement for Produce Values with a list of items and prices.

Advertisement for CLOROX disinfectant with a list of items and prices.

Advertisement for BIRMINGHAM FRUIT CO. with a list of items and prices.

Advertisement for BIRMINGHAM FRUIT CO. with the slogan 'FREE DELIVERY SERVICE'.

Advertisement for SHAIN'S DRUGS with the slogan 'REXALL FOR RELIABILITY'.

Advertisement for Bigger Buys in BETTER FOODS with an image of a woman.

Advertisement for Produce Values with a list of items and prices.

Advertisement for CLOROX disinfectant with a list of items and prices.

Advertisement for BIRMINGHAM FRUIT CO. with a list of items and prices.

Advertisement for BIRMINGHAM FRUIT CO. with the slogan 'FREE DELIVERY SERVICE'.

Advertisement for GPM PEAT Insecticides + Fungicides RUST-OLEUM.

Advertisement for The Heath Nurseries with a list of items and prices.

Advertisement for 'No more Blue Mondays!' featuring an image of a woman.

Advertisement for PERMUTIT WATER CONDITIONING HEADQUARTERS.

Advertisement for RITE-WAY Softener Service with a list of items and prices.

Advertisement for SAN-A-LIZER with an image of a fly and the slogan 'KEEPS FLIES, ANTS AWAY...'.

Advertisement for SHAIN'S DRUG STORE with a list of items and prices.

Advertisement for Check Damage from Dampness! featuring De-Moist.

Advertisement for De-Moist AMAZING NEW AIR DRIER with a list of items and prices.

Advertisement for De-Moist AMAZING NEW AIR DRIER with a list of items and prices.

Advertisement for De-Moist AMAZING NEW AIR DRIER with a list of items and prices.

Advertisement for De-Moist AMAZING NEW AIR DRIER with a list of items and prices.

Advertisement for SAN-A-LIZER with an image of a fly and the slogan 'KEEPS FLIES, ANTS AWAY...'.

Advertisement for SHAIN'S DRUG STORE with a list of items and prices.

Advertisement for Check Damage from Dampness! featuring De-Moist.

Advertisement for De-Moist AMAZING NEW AIR DRIER with a list of items and prices.

Advertisement for De-Moist AMAZING NEW AIR DRIER with a list of items and prices.

Advertisement for De-Moist AMAZING NEW AIR DRIER with a list of items and prices.