



**GAS MASKS GO UP IN SMOKE**—A Chicago war surplus dealer adds a few more "white elephants" to the fire as he burns two million new gas masks, which originally cost the government \$6,500,000. The dealer bought the masks for five cents each, but was unable to sell them. They were originally purchased by the government for the wartime protection of civilians.

**Legion Team Is Out Of Playoffs**

The Charles Edwards Post American Legion baseball team's bid to travel to Flint for the same play-offs was shattered Sunday when the Legion team of Pontiac squeezed out a 1-0 victory.

Chuck Ganley, on the mound for Birmingham, allowed seven hits and struck out sixteen opposing batters. The lone Pontiac run was a home run by Huffman of Pontiac in the sixth inning.

Ganley showed the visitors his "stuff" in the second inning after Huffman lined out a double to right field. This was as far as he advanced as Chuck struck out the next three batters.

Johnson, on the mound for Pontiac, pitched a good game allowing but four hits. Some good fielding by his teammates saved him several times. Birmingham had scoring opportunities in the first, sixth and eighth innings but couldn't get the boys around to home plate.

ford field Wednesday. The next home game for Birmingham will be played at Berea Field Sunday, July 17, at 2:30. They play host to Pontiac.

**Patterson Replaces Genaro Florez on C of C Board**

The board of directors of the Birmingham Chamber of Commerce, at its regular meeting Monday evening, accepted the resignation of Genaro A. Florez as a director. Florez has not been a resident of this area for some time and has found it increasingly difficult if not impossible to keep posted on local conditions and attend the board meetings. He was very active in the organization of the Chamber and served as its first president.

Richard M. Patterson, a Resident Member of the Chamber, was unanimously elected by the board to replace Florez. Patterson, who is active in civic affairs, lives at 1622 South Bates street and is affiliated with the Detroit office of Watling Lerchen and Co.

**Scoring Chances**

In the sixth inning with Dick Halpin on second base and one out, Ganley lashed out a drive towards short that looked like a hit. Leaping high in the air the shortstop speared the ball and deflected Halpin off second to end the threat.

**Fire Department Has Easy Time This Week**

The Birmingham Fire Department during the past week spent one of its most quiet periods in a long time. They were called to but one residence.

Birmingham again had a chance in the eighth inning when with Jim Gamble on first base Buzz Jackson lined a ball to centerfield that had the earmarks of an extra base blow. The Pontiac center-fielder raced over and made a running catch for the fielding play of the game.

The garage of Mr. and Mrs. C. J. Coward of 1063 Mohegan caught fire last Friday afternoon. The fire caused only slight damage to the roof and interior. It is believed it was started by a spark from a rubbish fire which was burning in an adjoining lot.

The local lads return to their regularly scheduled games by meeting Waterford on the Water-

A Navy carrier task group can great an attacking plane with more than 6,000 shells per second.

**Customers Corner**

How do you like the fresh fruits and vegetable department in your A&P store? Are the vegetables fresh and crisp — as they should be? Are the fruits firm and ripe — as they should be? Are the displays neat and orderly — as they should be? Are the clerks helpful and courteous — as they should be?

We maintain buying offices wherever and whenever fresh fruits and vegetables of top quality are available. We rush this produce in refrigerated trains and trucks to our warehouses and stores. We price it to sell quickly and we inspect it constantly all along the line for any sign of deterioration.

In other words, all our efforts are aimed at offering you only the finest and freshest fruits and vegetables.

If we ever fail to do this, we will consider it a favor if you will tell us about it. Please write:

Customer Relations Department,  
A&P Food Stores, 420 Lexington Avenue,  
New York 17, N. Y.



**Fit to Be Fried... and Fit for a King!**

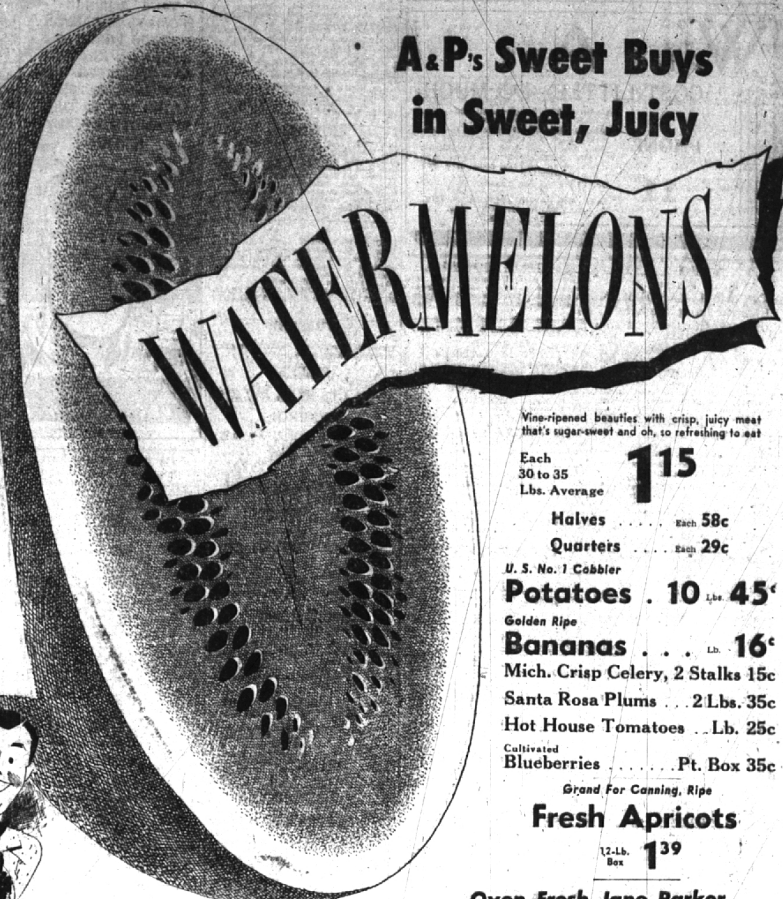
- FRESH FRYING CHICKENS** New York Dressed . . . . . Lb. **45¢**
- Drawn Fryers** Fully Dressed Lb. **65¢**    **Smoked Picnics** . . . Lb. **47¢**
- Chicken Legs** . . . . . Lb. **89¢**    **Frankfurters** 100% Meat Skinless Lb. **51¢**
- Chicken Breasts** . . . . . Lb. **99¢**    **Bologna** 100% Meat—Ring or Large by the Piece . . . . . Lb. **49¢**
- Veal Shoulder Steaks** . . . . . Lb. **53¢**    **Thuringer** . . . . . Lb. **63¢**
- Veal Shoulder Roasts** . . . . . Lb. **45¢**    **Veal Leg Roasts** . . . . . Lb. **49¢**
- FRESH WHITEFISH** . . . . . Lb. **37¢**
- Blue Pike Fillets** Ready Pan . . . . . Lb. **49¢**    **Fresh Haddock Fillets** . . . . . Lb. **43¢**

**PURSE-PLEASING PANTRY PROVISIONS**

- Iona Peaches** Halved 2 12-oz. Cans **39¢**
- Redi-Meat** Or Treet . . . . . 12-oz. Can **37¢**
- Ketchup** Packer's Label . . . . . 2 14-oz. Botts. **23¢**
- Pineapple Juice** Dole or Del Monte . . . . . 2 12-oz. Cans **23¢**
- A&P Grapefruit Juice** . . . . . 46-oz. Can **27¢**
- Sultana Fruit Cocktail** . . . . . 29-oz. Can **29¢**
- A&P Grapefruit Sections** . . . . . 2 30-oz. Cans **37¢**
- Karo Waffle Syrup** Green Label . . . . . 1 1 1/2 Lb. Bot. **20¢**
- Argo Laundry Starch** . . . . . Lb. Pkg. **11¢**
- Woodbury's Soap** Bath Size . . . . . 2 Banded Cakes **21¢**
- Red Salmon** Sunnybrook Brand Lb. Can **59¢**
- Iona Tender Peas** . . . . . 3 20-oz. Cans **29¢**
- A&P Sauer Kraut** . . . . . 29-oz. Can **10¢**
- White House Milk** Evaporated None Better . . . . . 3 Tall Cans **35¢**
- dexo Shortening** For Better Tasting Fried Foods . . . . . 3 Lb. Cans **79¢**
- Lang's Sweet Mix Pickles** . . . . . Qt. Jar **25¢**
- Marshmallows** Recipe or Puritan . . . . . 2 10-oz. Cello Pkgs. **33¢**
- Scott's Soft Weave Tissue** . . . . . 3 Rolls **32¢**
- Townhouse Cookies** Made by Lakeside . . . . . 12-oz. Pkg. **39¢**



**A&P's Sweet Buys in Sweet, Juicy**



Vine-ripened beauties with crisp, juicy meat that's sugar-sweet and oh, so refreshing to eat

Each 30 to 35 Lbs. Average **115**

Halves . . . . . Each **58¢**

Quarters . . . . . Each **29¢**

U. S. No. 1 Cobbler **Potatoes . 10 Lb. 45¢**

Golden Rip **Bananas . . . . . Lb. 16¢**

Mich. Crisp Celery, 2 Stalks **15¢**

Santa Rosa Plums . . . 2 Lbs. **35¢**

Hot House Tomatoes . . Lb. **25¢**

Cultivated Blueberries . . . . . Pt. Box **35¢**

Grand For Canning, Rip **Fresh Apricots**

12-Lb. Box **139**

**Oven-Fresh Jane Parker**

**POUND CAKE**

Gold or Marble **82. 45¢**



**Bar Cake** Spanish Moist, Spicy . . . . . Each **29¢**

**Marvel Bread** White Bread 1 1/2-Lb. Loaf **18¢**

**Iced Neopolitan Bar Cake** . . . . . Each **39¢**

**Almond Cherry Sugar Buns** . . . . . Each **29¢**

**Cinnamon Raisin Treats** Iced . . . . . Each **29¢**

**Apple Pies** Rip, Tender Crust Deep-Dish Style . . . . . Each **49¢**

**Potato Chips** Jane Parker Crispy Fresh . . . . . 6-oz. Pkg. **29¢** 12-Lb. Tin **75¢**

**Sliced Mel-O-Bit Processed**

**AMERICAN CHEESE**

Lb. **45¢**



**Ched-O-Bit** Processed Cheese Food 2 Lb. Loaf **69¢**

**Chunk O' Gold** Sharp Tangy Cheese Spread . . . . . Lb. **59¢**

**Borden's Vera-Sharp** Cheese Spread 6-ounce Wedge Cut **29¢**

**Crestmont Ice Cream** All Flavors . . . . . 1/2 Gal. Ctn. **98¢**

**You'll Say: "BEST ICED TEA FOR ME!" Yet Many Who Prefer A&P Teas SAVE UP TO 15¢ ON A POUND\***

\*Based on National Survey Averages

**NECTAR AND FLAVORFUL** 1 1/2-Lb. 35¢

**Nectar Tea Bags** . . . . . Pkg. **43¢**

**HEARTY AND VIGOROUS** 1 1/2-Lb. 47¢

**Our Own Tea** . . . . . Pkg. **47¢**

**Our Own Tea Bags** . . . . . 1 Pkg. of 16 Banded Pkg. of 48 Together **49¢**



**GAS HEAT**  
Is Now Available to You  
If You Have An Approved Permit  
HAVE YOUR GAS EQUIPMENT  
INSTALLED BY A  
LOCAL ESTABLISHED CONTRACTOR

Equipment Handled  
By Us is All  
A.G.A. Approved  
FREE ESTIMATES  
GLADLY GIVEN

**Joseph B. MOERY**  
1728 W. Maple  
Near Chesterfield  
PH. 1510

*We Service What We Sell at*  
**HAWTHORNE**

**I HEAR THEY DO IT WITH A WESTINGHOUSE AUTOMATIC WATER HEATER**

Every hour, on the hour! How else can they get so much hot water so regularly. A Westinghouse automatic water heater, of course!

Let us install one and give you all the hot water you want, whenever you want it. Enjoy the convenience of a Westinghouse automatic water heater today.

**HAWTHORNE ELECTRICAL COMPANY**  
162 N. Woodward Phone 299-W

For Sparkling Percolate <b>Kitchen Klenzer</b> 2 12-oz. Cans <b>17¢</b>	Flavorful Luncheon Meat <b>Swift's Prem</b> 12-oz. <b>37¢</b>	Your Pets Will Like It! <b>Pard Dog Food</b> 2 1-Lb. Cans <b>29¢</b>	Mild, Pure <b>Ivory Soap</b> Medium Size Cake <b>9¢</b>	Safe, Suds, Whiter Washes <b>Duz</b> Lb. Pkg. <b>28¢</b> Pkg. Glass <b>73¢</b>	New Washing Miracles <b>Tide</b> Lb. Pkg. <b>28¢</b> Glass Pkg. <b>73¢</b>
---	---	--	---	--	--