

SEVENTY-FIRST YEAR—NO. 44

BIRMINGHAM, OAKLAND COUNTY, MICHIGAN, THURSDAY, JANUARY 20, 1949

\$2.50 PER YEAR (In Oakland County)—SINGLE COPIES, 5c

Construction Rises Sharply In December

After a sharp decline for November, new building took a steep rise last month in Birmingham, when 28 permits brought an estimated total of \$482,400 construction costs. In addition to this there were 14 permits for alterations which will total \$36,815.

The 28 new buildings will include 23 single residences, two terraces of 30 units each, two business places and one private garage. Alterations will include work on seven single dwelling units, one business place and one industrial plant.

Three building permit renewals were issued for one residence and two places of business. Two persons obtained permits to move buildings.

Investment Securities LISTED - UNLISTED - LETT EIS

Member Detroit Stock Exchange
Woodward 5-4900
Woodward 5-3855

We Heard It Said By:

Fire Chief V. W. Griffith: "The recent fire at the Automatic Car Wash shows just how much it plays to follow the advice of construction engineers. Their boiler was separated from the main part of the building. This, alone, made it possible and easy for us to keep the fire confined to one small area, and away from the greater part of the building. By keeping it in the smaller area, naturally we were able to put it out with a lot less work and damage."

Receives Promotion

John Gilbert, 836 Mohagan, junior in the school of mechanical engineering at Purdue, a member of their military band, has been promoted to the rank of first lieutenant.

The announcement was made by Prof. P. S. Emrick, who said that with the close of the marching season band members were now practicing classical music for the winter and spring concert season.



Bits of Birmingham

Our over-worked "little bird" reported to this Wanderer that a group of young mothers in town would awfully like to see a matinee program established in one of the local theatres. They cannot get to a neighboring city for a show and return home before their youngsters are out of school. In addition, with most of the husbands working out of town, their dinner hour is so late that they see few evening shows. The "bird" reported that this group was pretty wide-spread, top, and growing larger as more and more young families move into Birmingham.

This has been a warm winter and Mrs. C. P. Sewell is still harvesting from last summer's garden. She reported to this Wanderer on Monday that her Brussels sprouts are extremely delicious at this point although they almost had to put on hip boots to gather them. The vegetable was planted this last summer.

This Wanderer received a note from Margaret M. Brennan, 2711 Wilshire, who is spending the winter in Santa Monica, Calif., and with it a clipping with a story about "Tiger", a big Persian cat. "Tiger" has much in common with "Sarge" and "Foxy Cat" who became news here through the cruelty of persons unknown. Only a few months ago someone, using a .22 rifle, shot "Tiger" three times. His front legs were shattered and one bullet lodged in his heart. Extensive surgery re-

paired the broken legs and removed the bullet so that now "Tiger" is himself again. It strikes us that what these three might say to each other would prove a bit "unflattering", if mankind were their topic.

Charlie Ross, operator a d owner of Edgewood Golf Club was back in town last week from Florida, where he is spending the winter, as usual. Says he heard Michigan was having a winter with no snow, so he thought he would come up and take a look at the improvements he instituted here last autumn at the club. He is planning to return to Florida in a week or so. He has been widened on the wooded side to the extent of 100 feet. Other improvements will be in evidence come golf season, too, he added.

In this day, when flat about every bit of real estate over a quarter of an acre in size must bear a name, this Wanderer was amused the other day to see a traction wagon pull up in front of a store, with "We Got No Rancho" very neatly painted on the spare tire casing.

Snow in California, ice in California, winter in California, and in Michigan—grass fire! The Bloomfield Village fire department called this Wanderer early Thursday afternoon that they had just returned from putting out a grass fire which burned over between two and three acres.

Time marches on—and so do the prices. A classified ad in the Eccentric last week listed pure maple syrup at \$7.95 a gallon. If you will read the Happenings column this week you will find a cut-down display of 1899, where syrup and honey were both being offered for 50c a gallon! Doesn't that make you drool!

Well, girls, here it is. Tonight, Jan. 20, is St. Agnes Eve, and old tradition has it that you will become the wife of the man you dream of tonight. Now this Wanderer cannot vouch for this, but does suggest that so long as it is tradition you'd better get your thinking caps on and make it a good one. It certainly would be tough luck to spend this night dreaming about Uncle Elmer— you know, the one with the red headed wife.

Now that the March of Dimes cartons are being set up in stores,

we've started wondering if some people who apparently don't believe in charity or kindness will continue to steal the contribution cans from the stores. It's hard to believe, but it has been done in other cities. We can only quote "Do unto others" and hope that the Christian spirit will hold the tempted back from such low actions.

Although locally and nationally famous stars will compete for titles in the Department of Parks and Recreation city skating championships at Belle Isle January 22-23 there are events for skaters of every age and ability in Detroit and suburban communities. Amateur skaters from Birmingham and other suburban communities are eligible to compete for titles. All competitors, except the members of the Detroit Skaters Association, are required to register at the Belle Isle Skating Pavilion at noon Saturday, January 22, for novice events, and at noon Sunday for championship events. There is no need to fill an entry blank in advance of the day of the meet.

Mrs. A. D. McLay, or 715 Wilmont, is the sister of Henry A. Wallace, leader of the Progressive Party, who is a candidate for President at the Nov. 2 election. Mrs. McLay is one of that Party's vice-chairmen in Michigan. While extremely critical of Republicans and their policies, she is also in disagreement with the conservatism of Michigan's new Democratic Governor, G. Mennen Williams. "I think Gov. Williams isn't specific enough in his program. I believe in governmental housing, greater strength for labor, and the enactment of a strong State Fair Employment Practices Act," she told this Wanderer this week. "We in our Party intend to keep on working and will have our own candidates for State offices, from time to time as various elective terms of incumbent expire."

Do you know how many miles the average mail carrier walks each day? From Jack Melma, one of Birmingham's postal men, it is 20 miles. Some folks ask me if so much walking works injuries on the feet. "Not at all," said Jack, "walking is good exercise, and really makes good feet and legs better." Melma, "Down in Detroit, the average postman may have from six to eight hundred miles on his route, out in Birmingham and vicinity, due to the heavy mail received by residents, the route is shorter. So many local folks get so many magazines, you see."

Mrs. C. Robertson Speaks on Taxes at State Meeting

"State aid to local governmental units, now distributed through a variety of formulas, should be reformed through scientific distribution methods," Mrs. Covert Robertson of Birmingham declared in a report presented before a state wide Tax Institute sponsored by the Michigan League of Women Voters in Lansing, Thursday.

Mrs. Robertson was one of several representatives who participated in this discussion at the Tax Institute. Mrs. W. W. Williams, Wing Lake, state second vice-president, was chairman of a panel discussion on constitutional restrictions affecting taxes. Mrs. Robertson spoke on standards for distribution to local governments.

"State aid is now distributed according to a variety of complicated formulas," Mrs. Robertson said. "Usually distribution is made without restrictions as to its use," she declared, pointing out that in a general way the formulas being followed contributed to irresponsible government.

"There should be some prerequisites to state aid, such as reorganization of government with fewer layers of authority and larger local tax areas," Mrs. Robertson said. "Aid should be given only for activities of general interest, such as education, highways, libraries, and welfare. The tax base should be broadened to allow local units with heavy tax burdens to pay themselves. Scientific assessment with equalization and a minimum tax levy should be required at every local unit before any return to the state funds."

"Adequate distribution of tax monies should be based on the needs of the people in each local area, and their ability to pay. Compromises between common sense, the experts, and experience add up to democracy, and to a better system of tax aids."

Delegates attending the session met with Gov. G. Mennen Williams for luncheon and heard him discuss state tax problems. Mrs. James Duntz of the Inter-Lake League of Women Voters, state taxation chairman, led an afternoon discussion of the property tax, corporation taxes, intangible taxes and inheritance taxes. Other panels covered the sales tax, use tax, gasoline and weight tax and excise taxes. Various local Leagues of Women Voters sponsored phases of the discussion.

"A course in after dinner speaking has been given at the U. S. Naval Academy for several years,

Local Y Team Fails In Attempt to Stop Big Detroit Quip

The praise of the crowd went to the six men who battled right to the finish for the Birmingham YMCA Men's team last Thursday in their encounter with the Northeastern YMCA of Detroit on the Barnum floor but to no avail. The final whistle found Northeastern on the fourth end of a 41 to 32 score. Roger Reynolds; Harry Sudegen; Bill Sutton; Stan Peterson; Jim Kether and Jack Simonds played themselves right off the floor as they managed to stay in front of their taller opponents for three quarters of the game before numbers wore them out. Northeastern's 16 point fourth quarter tells the story in a very few words. The local boys lacked replacements and could not stem the flow of baskets that saw their slim lead wiped out and found them trailing in the closing minutes of play.

Roger Reynolds hit five baskets and four shots to lead in scoring. Jack Cole with nine baskets and his running mate, Jim Samaras, with four and a four shot paced the scoring for Northeastern. The local defense merited the plaudits of the crowd which had anticipated a victory but were content to see a very close game. The loss was the fourth of the season against two victories for the "dark green," Birmingham 'Y' played Hannan and St. Antoine YMCAs in Detroit this week.

Harry O. Smart Life Insurance

164 W. Maple
Phone 484

duplicating

letters - bulletins - forms,
addressing - mailing
Reasonable

BIRMINGHAM LETTER SHOP

Room 13, 124 S. Woodward,
Phone 963.

INSURE WITH THE HARTFORD INSURANCE COMPANIES

All Types of Policies
FIRE, MARINE, AUTOMOBILE
LIABILITY-BURGLARY
PHONE 328-J

Birmingham Representative
RICE A. HOWELL
WABEEK BUILDING

High Standards and Good Stewardship

Are only two of many reasons for the ever-continuing acceptance this organization receives from our clientele and the public.

Complete files—accurate documentary records and closing statements are always available when requested to everyone we have served for nearly 20 years.

Our adequate staff is ever willing to serve you on either a consultative or sales basis as you prefer. Your business is treated with competence and confidence.

SNYDER & KINNEY & BENNETT INC.
239 S. Woodward
Birmingham 1400

ARE YOU PAYING OVER 4% INTEREST TO FINANCE YOUR COUNTRY HOME?
See Us About a 4 1/2% Mortgage With Up to 20 Years to Pay.
NO Application Fee
Appraisal Fee
Commission
YOUR ONLY COST is the usual abstracting and recording expense.
BENJAMIN and STEPHENS, INC.
239 S. WOODWARD—Realtors—BIRMINGHAM
PHONE 4129 JORDAN 4-1132

USE THE ECCENTRIC WANT ADS FOR BEST RESULTS)

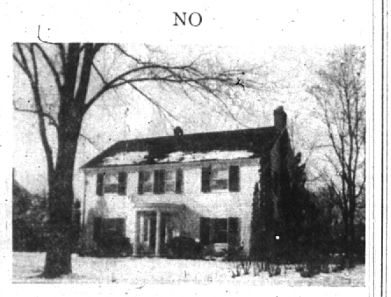
A Nice Variety

- No. 1 Three Bedroom Frame. Living room with fireplace. Dining and Sun Rooms, Lavatory, Screened Porch, Gas Heat, 2 car garage. \$11,000.00
- No. 2 Four Bedroom built 1941 on 75 ft. lot. Living room with fireplace, dining room. \$11,800.00
- No. 3 Attractive 6 room White Frame, near school and shops, Screened porch, 2 car garage. \$12,500.00
- No. 4 Relatively new 3-bedrm. Brick, with storms, screens, insulation, porch and gas heat, Deep lot. \$13,600.00
- No. 5 Birmingham Park. Five bedroom brick, 2 1/2 baths, plus lavatory. Features library, breakfast room modern kitchen, recreation room. \$24,500.00
- No. 6 Deluxe Colonial, four bedrooms, two baths, modern kitchen, Charming throughout, Wooded setting. \$29,500.00

WALSH, JAMES & WASEY Co.

431 So. Woodward Ave. Birmingham 4900

"Miss Tatlocks' Millions?"



NO
You need considerably less to buy this fine fine white clapboard Colonial in the exclusive Quarton section.

- A FEW OF ITS UNUSUAL FEATURES
 - PAVED STREET
 - DOWNSTAIRS
 - 1 Room—16 x 27
 - D Room—14 x 15
 - Library—13 x 16
 - 1st Floor Lavatory
 - UPSTAIRS
 - 4 Family Bedrooms (one small)
 - 2 Baths
 - Maid's Room and Bath
 - OIL HEAT—2 CAR ATTACHED GARAGE
- START YOUR NEW YEAR RIGHT BY INSPECTING THIS FINE HOME—NOW PRICED TO SELL

BENJAMIN and STEPHENS, INC.
239 S. WOODWARD—Realtors—BIRMINGHAM
Bham 4129 Jordan 4-7132

WHEN YOU'RE SICK SEE YOUR DOCTOR

WHEN YOU NEED LEGAL ADVICE SEE YOUR LAWYER

WHEN YOU NEED INSURANCE YOU SEE HUGH C. WHITE AGENCY

217 PIERCE STREET
(Opposite Municipal Building)
BIRMINGHAM, MICHIGAN
SERVICE AS NEAR AS YOUR TELEPHONE - BIRMINGHAM 3302-3303
— Insurance Since 1920 —

Still Growing

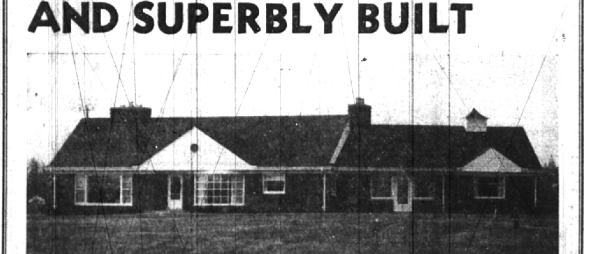
IN SERVICE TO SAVERS . . .

DEC. 31, 1933	\$41,259.00
DEC. 31, 1939	\$474,210.00
DEC. 31, 1944	\$1,516,131.00
DEC. 31, 1948	\$2,916,707.00

INSURED SAFETY—account for the sound growth of this association. Liberal income since our organization has been another vital growth factor. Here you are INSURED to \$5,000 by an agency of U. S. Gov't.

BIRMINGHAM FEDERAL
Savings and Loan Association
Woodward at Maple—Phone 1040
Member of Federal Home Loan Bank System and Federal Savings & Loan Insurance Corporation

ALL BRICK... AND SUPERBLY BUILT



On a 2 1/2 Acre Knoll
One of the most convenient locations in Bloomfield is that part of the Adams School district near the east branch of the Rouge . . . it's close to both the Woodward bus and the rail commuter service and yet secluded. The rambling ranch home pictured above is one of the finest in this desirable neighborhood.

Stretched out across the brow of the knoll, all the rooms have a beautiful view over sweeping lawns to distant woods. Two large Bedrooms (both are 12 by 16) and a color-laid Bath are in the south wing, with the Living Room . . . and the paneled Library, Utility Room, ultra-modern Kitchen and attached garage are on the north. There's an extra Bath for the Library-Guest Room (14 by 16) and the convenience of the sparkling Utility Room will charm any one who likes a place for everything and everything in its place.

Heating is hot-water-radiant, oil fired . . . the well is 160 feet deep . . . sifter and filter . . . taxes are low. You'll never see finer or more immaculate house-keeping . . . Let's look today!

Call
MAX BROOCK INC.
REALTORS
ESTABLISHED 1898
300 S. Woodward
Birmingham 1212