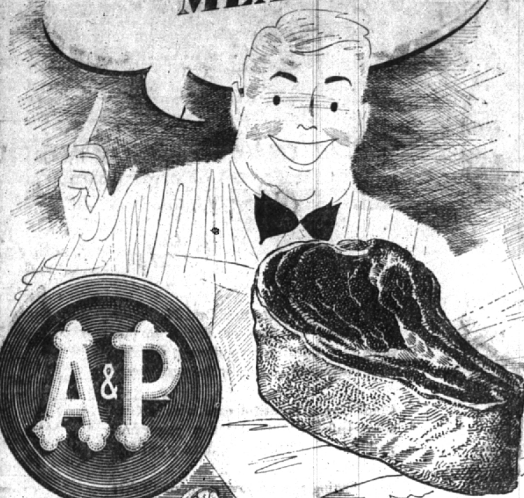


When You Buy MEATS



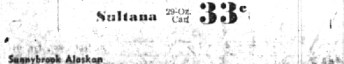
Is it Only the Price per lb. that Counts?

Regardless of price, meat isn't a good buy unless it gives you your money's worth of enjoyment. That's what makes A&P's famous "Super-Right" meats such outstanding values. Every one of these tender, juicy cuts is specially selected to give you downright delicious eating, and Close-Trimmed of excess waste to give you more of it for your money. Yet because we sell such huge quantities of "Super-Right" meats, we're able to mark them with prices that are surprisingly low.

PRIME RIBS OF BEEF
Close Trimmed of Excess Waste Before Weighing
Lb. 65¢

- PORK LOINS** Rib End **35¢**
- STEAKS - Round or Sirloin** . . . **lb. 77¢**
- SPARE RIBS** Lean, Meaty **39¢**
- Short Ribs or Boiling Beef . . . **37¢**
- Pork Chops **63¢**
- Ring or Large Bologna . . . **49¢**
- Sliced Bacon . . . **49¢**
- Cooked or Smoked Hams . . . **53¢**
- Skinless Frankfurters . . . **53¢**
- Fresh Haddock Fillets . . . **45¢**

Thrift Priced, Luscious FRUIT COCKTAIL



Red Salmon . . . **59¢**

Pineapple . . . **29¢**

Tuna Fish . . . **27¢**

Stokely's Tomato Catsup . . . **29¢**

Iona Tomato Juice . . . **19¢**

Armour's Corned Beef . . . **47¢**

Treet or Redi-Meat . . . **39¢**

Iona Peaches . . . **23¢**

Iona Appricots . . . **23¢**

Packer's Label Orange Juice . . . **20¢**

A & P Grapefruit Juice . . . **19¢**

Blended Juice . . . **20¢**

Dole Pineapple Juice . . . **35¢**

Iona Pork & Beans . . . **25¢**

Iona Tomatoes . . . **27¢**

White or Golden Corn . . . **25¢**

Iona Green Tender Peas . . . **19¢**

Silver Floss Sauer Kraut . . . **10¢**

Niblets Golden Corn . . . **31¢**

Ann Page Spaghetti . . . **39¢**

Ann Page Salad Dressing . . . **49¢**

White House Milk . . . **39¢**

Shredded Wheat . . . **33¢**

Dexo Shortening . . . **3-lb. can 95¢**

Bull Dog Bluing . . . **3¢**

20 Mule Team Borax . . . **15¢**

Boraxo Powder . . . **14¢**

Karo Waffle Syrup . . . **21¢**

Argo Starch . . . **Lb. Pkg. 11¢**

Diamond Book Matches . . . **9¢**

Our Own Tea . . . **47¢**

Nectar Tea . . . **97¢**

FAMOUS A&P COFFEE

Eight O'Clock . . . **Lb. Bag 40¢**

Red Circle . . . **Lb. Bag 44¢**

Bokar . . . **Lb. Bag 47¢**

Firm, Flavor-rich U.S. No. 1 Grade POTATOES

- Michigan** **49 lb. \$1.69**
- Maine** **49 lb. \$2.29**
- Florida Seedless GRAPEFRUIT** .10 **49¢**
- California Lemons** . . . **25¢**
- D'Anjou Pears** . . . **15¢**
- Puerto Rican Yams** . . . **3 Lb. 19¢**
- Fresh Tender Spinach** . . . **25¢**
- Delicious Apples** . . . **19¢**
- Sunsweet Prunes** . . . **39¢**
- Red Diamond Walnuts** . . . **49¢**

Jane Parker, Fresh POTATO BREAD FRESH COOKIES

- Tender, Tasty Potato Bread** . . . **15¢**
- Peanut, Fudge, Sugar Cookies** . . . **29¢**
- Donuts** . . . **18¢**
- Dinner Rolls** . . . **10¢**
- Marvel White Bread** . . . **18¢**

Ched-O-Bit, Sunnybrook CHEESE FOOD GRADE A EGGS

- Ched-O-Bit** . . . **79¢**
- Sunnybrook** . . . **61¢**
- Butter** . . . **69¢**
- Fresh Eggs** . . . **55¢**
- Marvel White Bread** . . . **18¢**

Wildmore Creamery Fresh BUTTER Sunnybrook Grade "A" Med. Size FRESH EGGS

- Wildmore Creamery Fresh Butter** . . . **59¢**
- Sunnybrook Grade "A" Med. Size Fresh Eggs** . . . **55¢**
- Marvel White Bread** . . . **18¢**

A&P Super Markets

THE GREAT ATLANTIC AND PACIFIC TEA COMPANY

WALNUT LAKE NEWS

By NORINE MCKAY
Phone: LONGACRE 3-2375

During the temporary absence of our regular Walnut Lake correspondent the column is being prepared by Dorothy Kendall, Phone Longacre 3-2754.

The children of Walnut Lake school received a thank you note from the Navajo Indians for the boxes of food and clothing they sent. The packages arrived at a trading post 200 miles from a reservation and a station wagon took them the rest of the way. The tent of one family, the day before the boxes arrived, this family was given the first donations. Some of the boxes were sent on to Monument Valley, a section in dire need.

A family party was given at the home of Mr. and Mrs. Alvin Goodwin of Fatman on Jan. 12, to celebrate the birthday of Mrs. Paul Goodwin.

Mrs. Elizabeth Wood, who has been visiting her daughter's family in Williamstown, Ontario, returned to her home in Hamilton, Ontario, on Sunday.

Mrs. Graham Overgard and Mrs. Lee Hanson attended the meeting of the Rotary Club on Monday.

Sunday guests at the George Osterbeck home on Euclid were Mr. and Mrs. Sidney Reinhold of Seattle, Mr. and Mrs. Rembold of George's sister, another sister, Mrs. Paul Harnois, is a houseguest for a few days.

At the Brownie meeting on Monday, Norine McKay taught the children to do the Eppanaday dance. Hostess for the day was Sibyl Hampton and bag bearers were Kathryn Ormstead and Elaine Palmer. Mrs. Jean McDougall was the leader in attendance.

The noise you have been hearing around the lake is being made by a dredge. The Overgards are having their shoreline improved and are filling in the lake to make a sloping lawn down to the lake front. From there the dredge will move on to the property owned by Claude Whitmer and will work on that section of the beach.

A Valentine dance will be given by the Walnut Lake club on Saturday, Feb. 12, in their club rooms. William Unsworth is the chairman of the committee planning the affair.

Houseguests of the Walter Carey family of Middlebelt road is Mrs. N. I. Townsend of Penton, Mrs. Townsend is the daughter of the chairman and formerly lived in Evansville, Indiana.

The ceramics group of the Women's club met Jan. 18 at the Carey home. They made tiles from colored slip. At their next meeting they will start making their own molds.

Richard V. McKay left Monday for Washington, D.C. as a photographer for the Ford Motor company, he will be covering the inauguration.

Court Teams Hold League Positions

All Stars continued their winning ways last Monday evening with a 43-24 victory over the Exchange-Sports club to stay out in front in two Birmingham YMCA Basketball League. Other victorious teams were Rotary, who carried on for the night and won 35 to 20, and Michigan Bell Telephone outlasted Virginia Market to win 29 to 24.

All Stars had difficulty controlling the ball in the first quarter of play and were held to 10 points. On a break by Bolton and Paul Kelley they pulled into a 23 to 16 half-time score and preserved this advantage for the remainder of the game. Ted Herbst, Paul Johns and George Fietche checked up six points each for Exchange Club while Don Little coupled five bay and three foul shots for 14 points total to lead the All Stars.

Rotary club played one of those basketball games they are capable of playing and scored a well earned 35 to 29 victory over W. A. Caltrider's quintet. They sank 13 out of 19 foul shots and managed to consistently outshoot the backboard rebounds. John MacDonald and Cliff McBride combined to give Rotary 15 points of their total score to which members of the Blue and White contributed three points each. Harry Suedgen and Jim Keith hit for 14 points to keep W. A. Caltrider in the ball game.

Michigan Bell Telephone's Gold and Blue played a see-saw game with Virginia Market, in which the Red changed sides six times during the game.

The store at the end of the second period was 16 to 12 in favor of the Telephone boys. Oil baskets by Paul Brim, Virginia Market went out in front in the third period and failed to bottle up Jim Burtraw, who sifted through for three lay up shots that spelled victory for Michigan Bell. Raymie McBride and Jim Burtraw 10 baskets and five foul shots to lead their quintet in the scoring. Jim Keith, Bernie Tippen and Bob Beth scored in a total of 17 points for Virginia Market.

Standings to date are:
Wm. L. P. 6 0 1000
W. A. Caltrider 4 2 668
Rotary Club 3 3 500
Exchange Club 3 3 500
Mich. Bell Telephone 2 4 332
Virginia Market 0 6 000

Attend Open House on Saturday Night

Last Saturday night saw the girls and guys of Lakeside at the big open house at the Community House, featuring Jim Buchanan and his band. Movies were shown before the dance in the Ranch Room. Buchanan and his band played from 9:30 to 12:30, with punch and potato chips being served during intermission.