

Without the element of reasonable struggle to their own lives, neither flora nor fauna would be strong and endure. The palm grows more rapidly than the oak, yet it bends and breaks before the oak does; it is so with people, too. Lowest of all close brings enduring reward.

# The Birmingham Eccentric

PART TWO

SEVENTY-FIRST YEAR—NO. 43

BIRMINGHAM, OAKLAND COUNTY, MICHIGAN, THURSDAY, JANUARY 13, 1949

\$2.50 PER YEAR (in Oakland County)—SINGLE COPIES, 5c

## BETTER THAN STOCKS!

### Investment Suggestions

Buy one of these for your wife or children and make them a tax-free gift for their future security. Stocks and bonds are fine . . . but land is indestructible . . . and the foundation of most of America's large present day fortunes!

**1. Business frontage:** 108 feet on Woodward, fronting also on Hunter Blvd. (near the new Packers' Outlet location), with corners and frontage on a third street for access to both. A prime location for business now and increasingly valuable in the future. There's a masonry house that will help to pay the taxes—or remodel it for business use now.

**2. Terrace site:** On Woodward, near Oak, in the area now so popular for income multiples. 200 feet on Woodward, high and well drained. Ideal for FHA Title 608 financing. A buy.

**3. Business frontage:** On Woodward, a mile south of the City. Near the night Ball Park and the new Howard Johnson Restaurant. 340 feet including corner frontage, at a price 40% below current sales. This is outstanding.

**4. Residential:** One of the finest building sites in Bloomfield Hills, near Christ Church and Cranbrook. Over 2 acres, beautiful trees, rolling knolls. Sewer available. Priced at a loss for income tax purposes and less than 1933 figures.

**5. 323 feet** on Woodward, just north of Birmingham, zoned for business and ideal for a doctor's clinic or neighborhood store development . . . near the new terraces. About an acre and one-half of land, an important corner.

Any one of these is priced below current values and has a fine future for enhancement in worth. Take advantage of present liberal tax laws to establish an estate for your family!

**MAX BROOCK INC.**  
REALTORS  
ESTABLISHED 1902

300 S. Woodward Birmingham 1212

(USE ECCENTRIC WANT ADS FOR BEST RESULTS)

## Statement of Condition

AS OF DECEMBER 31, 1948.

ASSETS	
First Mortgage Loans	\$2,228,896.07
Loans on Passbooks	17,994.00
Properties sold on Contract	30,208.34
Stock in Federal Home Loan Bank	65,650.00
U. S. Government Bonds	377,345.19
Office Building and Equipment (less depreciation)	80,832.70
Other Assets	3,002.05
Cash on hand and in Banks	112,778.65
<b>Total Assets</b>	<b>\$2,916,707.00</b>

LIABILITIES	
Savings and Investment Share Accounts	\$2,495,056.98
Advances from Federal Home Loan Bank	150,000.00
Loans in Process	131,635.39
Other Liabilities	650.40
Specific Reserves	2,997.72
General Reserves	120,366.46
Undivided Profits	16,000.00
<b>Total Liabilities</b>	<b>\$2,916,707.00</b>

State of Michigan ) ss  
County of Oakland )

I, Walter L. Moreland, President of the Birmingham Federal Savings and Loan Association, do solemnly swear that the above is true to the best of my knowledge and belief.

WALTER L. MORELAND—President

Subscribed and sworn to before me this 4th day of January, 1949.

HAZEL E. LAWLER—Notary Public

My Commission expires January 14, 1949, Oakland County, Michigan.

## BIRMINGHAM FEDERAL

Savings and Loan Association

Woodward at Maple—Phone 1040



## Bits of Birmingham

S. A. (Larry) Stolberg, who for many years lived here on Rivencroft avenue, now lives in California, a bit north of San Diego. He was back in Birmingham recently, and this Wanderer listened to him talk about California weather. "We don't get enough rain in California to meet our needs," he said. "For example, there were nearly six months of no rain last year; everything was dry. One day it began to rain—not a downpour, but a nice drizzle. It was so welcome to me that I stayed out in it. My wife called: 'Larry, why don't you come indoors?' To which I replied: 'Listen, Hazel, I haven't seen rain for so long that I just want to stay out in it and get the feel of getting wet in a bit of rain.' And I did, and I got nice and wet, and I'll do it again . . . I hope."

**Warning to Birmingham Babies** . . . don't let this happen to you! Statistics show that while the population of Michigan has increased more than 15 per cent since 1940, dirty cow population has decreased about 12 per cent. Sounds mighty bad for the bottle brigade. To make matters seem worse the statistician points out further that the per capita milk consumption is higher. How can this be? Well, here's your answer—they're building better cows.

**RALPH A. MAIN**  
CIVIL ENGINEER and  
SURVEYOR  
Subdivision Design and Layout  
Certified Lot Surveys  
Wabek Bldg., Birmingham  
Phone B'ham 721

**INSURE**  
with the  
**HARTFORD**  
INSURANCE  
COMPANIES

All Types of Policies  
FIRE, MARINE, AUTO  
LIABILITY—BURGLARY  
PHONE 328-J  
Birmingham Representative  
**RICE A. HOWELL**  
WABEEK BUILDING

ing better cows nowadays. As a result of better breeding and research findings on feeding and management, today's bossy is out-producing her ancestors to such an extent that the above statistics are true and still there is more milk than ever before. Babies won't have to organize.

In its third year of organization since the end of World War II, the YMCA basketball league, operating at Baldwin High School on Monday evenings is offering a better brand of basketball than ever. Besides improvement in the caliber of play, the uniformity of the teams has shown much advancement. Uniforms don't necessarily make the team anymore than clothes make the man, but in both cases they are a big help. The spectators seem to approve of the nice uniforms, too, although they are mighty conspicuous by their absence at the "Y" games. If you like basketball why not drop around to the gym next Monday evening and witness a game or two. Three games are played each Monday, at seven, eight and nine o'clock.

We have a gas station on South Woodward which would like to sell gas. It is owned and operated by its time is taken up in directing persons to the offices of the Birmingham Chamber of Commerce. It's true, the C. of C. was located there, at one time, but several months ago took up their location at 350 E. Maple, and it is at this stand that they will be glad to issue license plates and transact whatever other business falls in their jurisdiction.

Because it would mean leaving their children alone, many members of the League of Women Voters have been missing the organization's meetings. To rectify this matter a nursery was set up by Mrs. Bill Atkinson at 52 S. Adams to handle the young fry so that their mothers could attend.

It has now turned out that the women who always are present at League meetings are taking advantage of the nursery and the women who seldom showed up because it would mean leaving the youngsters unattended still haven't made their appearances. Life's little problems!

New members in the local Rotary Club are Pete Smiler and Charles Mortensen. Smiler is a classification known as "Metals Parts," and of course, Mortensen has taken over the spot allotted to Chamber of Commerce secretary. Ralph Coryell has been reclassified by the club from Mobilized Rotarian to a Rotarian of Past Service status. Coryell entered the ranks of Rotary in 1928 which adds up to more than 20 years of service. The Wanderer takes off his Lions Club hat to a fine Rotarian record.

According to the State Conservation Department, the winters in Michigan are not severe enough to make it necessary for householders to erect bird feeding stations in their yards. However, department officials, will readily admit that those who do this can have a great deal of fun watching their star boarders at their meals. They even go so far as to say stale bread, put through the meat grinder, table scraps, and other bits around the house make ideal feed and involve very little expense. How many "tables" do you set each day, Mr. and Mrs. Birmingham?

Once in a while even the smartest merchants have to admit they are baffled by the buying habits of their customers. Near the time that school commenced last September, Ralph Wilson laid in a gross of high quality automatic pencils beautifully colored in the hues of the high school and adorned with the official crest of "Dear old Baldwin." Here's a hot cake item, Ralph said to himself as

he put the pencils on display, "and they will certainly sell fast." After looking over the item, the Wanderer agreed with Ralph, but was both mistaken. Evidently Baldwin High students aren't particular what they write with because most of the pencils are still on display in Wilson's Drug Store. As Ralph put it—"everything sells, but the hot cakes."

Many a man has been troubled with the Christmas tie situation and has been forced to realize there's nothing much he can do about it. However, Lawrence A. Warzel, whether he liked it or not, had the problem solved for him. As he remarked, the fire which cut through the McGaffey home last Thursday (he had an apartment there) "took care of a lot of Christmas neckties for me." We only hope he likes the one he was wearing at the time he lost the rest of his possessions.

Overheard at a local restaurant Thursday morning of last week as Birmingham firemen were fighting a fire at the Harold McGaffey residence, 981 N. Woodward avenue: "Gosh, it was a good protection that McGaffey asked me to increase the insurance on his property only yesterday. You never can tell what old demon fire will get at you."

Several hundred local people rushed to the scene of the McGaffey fire Thursday of last week. While they were sympathetic with the owner of the premises, (Type More BITS, Page 2, Part 2)

Investment Securities  
LISTED - UNLISTED  
**LETT EIS**  
Member Detroit Stock Exchange  
Woodward 5-4300 or B'ham 3211  
Woodward 2-3555 after 6 p.m.

**Harry O. Smart**  
Life Insurance  
164 W. Maple  
Phone 484

duplicating  
letters - bulletins - forms,  
addressing - mailing  
Reasonable  
**BIRMINGHAM LETTER SHOP**  
Room 13, 124 S. Woodward,  
Phone 963.

INSURANCE - BONDS  
**THE BIRMINGHAM**  
AGENCY  
CHAS B RANDALL  
OSCAR P PETERSON  
Insurance for  
Every Need  
PHONE 840  
1065 WOODWARD-BIRMINGHAM

## Good Values

Parochial & Quarten District. Three Bedroom frame. Living room with fireplace, dining room, 2 car garage. Deep lot. \$10,950.00

Nicely decorated three bedroom frame. A 12x24 living room with large bay and fireplace. Dining room. Oil heat, complete insulation, storms, screens, water softener, garage, carpets. \$11,800.00

Newly decorated bungalow, large living room and dining room, 2 bedrooms, tile bath. Oil heat, 2 car garage, on 100' site, close to transportation. \$12,500.00

Walking distance to shops. Attractive 6 room white frame house, newly decorated. Screened porch, 2 car garage. \$12,500.00

Owner transferred—Attractive brick house complete with storms, screens, porch, insulation and gas heat. Two bedrooms down, one bedroom up. Tile bath. Deep lot. Excellently priced. \$13,600.00

## WALSH, JAMES & WASEY Co.

431 So. Woodward Ave. Birmingham 4900

WHEN YOU'RE SICK  
SEE  
YOUR DOCTOR

WHEN YOU NEED  
LEGAL ADVICE  
SEE  
YOUR LAWYER

WHEN YOU NEED  
INSURANCE  
YOU SEE

**HUGH C. WHITE**  
AGENCY  
217 PIERCE STREET  
(Opposite Municipal Building)  
BIRMINGHAM, MICHIGAN  
SERVICE AS NEAR AS YOUR  
TELEPHONE - BIRMINGHAM 3302-3303  
— Insurance Since 1920 —

ARE YOU PAYING OVER  
4% INTEREST TO FINANCE  
YOUR COUNTRY HOME?

SEE US ABOUT A 4% MORTGAGE  
WITH UP TO 20 YEARS TO PAY.

# NO

YOUR ONLY COST is the usual abstracting and recording expense.

**BENJAMIN**  
and **STEPHENS, INC.**

229 S. WOODWARD—Realtors—BIRMINGHAM  
PHONE 4129 JORDAN 4-7132

## A Large Selection of New Homes

**THREE BEDROOM BRICK COLONIAL**  
70 foot sided lot—2 car solid masonry garage—solid side drive—Chrysler Airtemp heat—gas burning incinerator—fireplace—large terrace—copper piping and solid brass hardware throughout—two extra lavatories—finished recreation room—plus many other special features. ARGYLE BLVD. BETWEEN WEST MAPLE AND MIDVALE.

**2 AND 3 BEDROOM BRICK RANCH STYLE**  
Oil heat—fireplace—large rooms—Choice of tile colors and decorating. DORCHESTER AND BUCKINGHAM STREETS BETWEEN ETON AND EDENBOROUGH, NORTH OF EAST MAPLE.

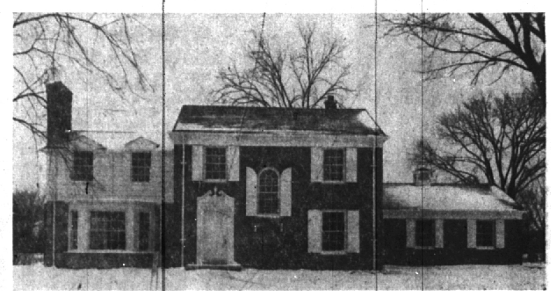
**2 BEDROOM BRICK BUNGALOW**  
75 Foot Lot—oil heat—tile features—large unfinished second floor—\$10,000 FHA 4% mortgage to a veteran—also available to civilians. YORKSHIRE AT ST. ANDREWS, BLOCK NORTH OF EAST MAPLE.

**2 BEDROOM BRICK BUNGALOWS**  
Oil heat—fireplace—tile features—large unfinished second floor—several mixed elevations. MIDVALE AT ETON, 4 BLOCKS NORTH OF EAST MAPLE.

**2 and 3 BEDROOM, ONE AND ONE-HALF STORY**  
Full basement—tile bath—excellent construction—no two like BENNA VILLE BETWEEN GRANT AND EDGEWOOD, WEST OF WOODWARD AND SOUTH OF LINCOLN.

TOTAL MONTHLY PAYMENTS AS LOW AS \$65.  
30 HOMES IN THE ABOVE GROUP  
FHA mortgage—Some ready for immediate occupancy.  
THESE HOMES OPEN AFTERNOONS AND EVENINGS  
OR BY APPOINTMENT

## In Bloomfield Village . . .



341 WESTWOOD DRIVE

Top-flight architectural execution of exterior outline and interior detail.

Three bedrooms — two baths AND library.

Poured concrete foundation, fir framing, superb mechanicals, plus the integrity of the contractor - Henderson Homes, Inc.

Lovely to see, cheerful and easy-to-work-in kitchen.

Quarten School close by.