

MUSIC is God's gift to a world of human beings... just as one food and air and sunlight. Happy, indeed, are people who find time in their daily lives to spend even a brief time to receive calm and tranquil inspiration from the good music so available to all.

# The Birmingham Post-Herald

PART THREE

SEVENTY-FIRST YEAR—NO. 47

BIRMINGHAM, OAKLAND COUNTY, MICHIGAN, THURSDAY, FEBRUARY 10, 1949

\$2.50 PER YEAR (In Oakland County)—SINGLE COPIES, 5c

**SCREENS AND STORM SASH**  
 • WINDOWS  
 • CUPBOARD DOORS  
 • FLUSH DOORS  
 WOODCRAFT CO.  
 1184 Grant at Ruffner

**INCOME TAX SERVICE**  
 DAVE LEVINSON  
 144 W. Maple (over RB Shop)  
 Phone 3838 or 49

**Former Resident Has New Band In California**

If you're going to Pomona or Long Beach, Calif., and you want to drop in at the St. Charles Grill and Cocktail Lounge in the former city some evening, there's an old neighbor ready to greet you. John Patrick Darvell and his musical trio, the Aristo-Cats have opened there just recently.

An auto parts salesman by day, this night-time bandman has been interested in music since, as a little boy of about five, he was given a drum and included in a toy orchestra at Pierce School. He has played in bands and formed bands ever since. During his school years he played in Birmingham and nearby communities, and just prior to entering the Army Air Forces, played in various Pontiac night clubs.

Being a member of the Air Forces did not curb him however for he started one band while stationed at a western training base, and another at an air base in Alaska.

He left for California, with his wife and two children, last September, and according to his mother will be happy to greet any localities who happen to visit his former home in California in the future.

**Have You Met . . .**  
 Mr. and Mrs. John Lynch who have returned from Hartford, Conn. to 1227 North Woodward? Mr. Lynch is with the Cushman Chuck Company.

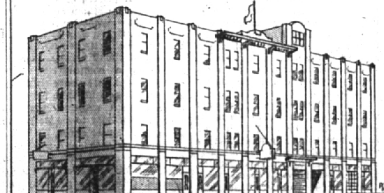
**ACME Window & House Cleaning Company**  
 Phone 1162  
 832 BOWERS BIRMINGHAM  
 "Oakland County's Oldest Window Cleaning Service"

**DON'T MESS WITH GARBAGE!**

**Waste King PULVERATOR**  
 "KING OF THE KITCHEN"

**BOOKKEEPING SYSTEMS INSTALLED**  
 Complete Tax Service  
 Monthly Accounting Service  
 All Types of Business  
**L. E. NELSON ASSOCIATES**  
 210 THEATER BUILDING PHONE 4544

**CRAIG Appliances Inc.**  
 112 So. Woodward  
 Phone 4822



You Are Cordially Invited to Inspect  
**OUR MODERN STORAGE**  
 Built Especially to Store Household Goods  
**LOCAL AND LONG DISTANCE MOVING**  
**GAUKLER STORAGE CO.**  
 9 Orchard Lake Ave., Pontiac, Mich.  
 Phone Birmingham 10240

**Valentine**



Bonita Granville, star of United Artists' movie, "Strike It Rich," strikes a pose in honor of St. Valentine. This is the 250th time Bonita has posed in a special costume calling attention to some special occasion, studio press agents say. For a young girl, that's quite a figure.

**Cranbrook Ceramist Will Appear on TV Show Tomorrow**

A pre-historic Near Eastern European vessel and a pre-historic American Indian painted bowl will highlight the ceramics display on "The World of Art" television show Thursday, Feb. 17, from 7:45 to 8 p.m. over Station WXYZ-TV, Detroit.

A brief demonstration of pottery-making will be given by Murray Douglas, a recognized authority whose works have been widely exhibited in art museums. Douglas is teacher of ceramics at Cranbrook Art Academy.

Another object on the program will be a Chinese porcelain to emphasize that China was one of the first cultures to refine pottery by glazing. A modern piece of pottery will also be used to show both functional use and beauty.

"The World of Art" shows are produced in co-operation with the Detroit Institute of Arts to further community interest in the fine and graphic arts. Marshall Fredericks, Birmingham sculptor, is the commentator.

**Contracts Awarded by School Boards for \$45.1 Million in New Buildings**

(Special Story From Our Washington Bureau)

WASHINGTON Michigan ranks sixth in the list of states which have earmarked large sums to build new schools in the last three years.

Topping the list is California, which has awarded contracts for new schools totaling \$84.9 million since 1946. Contracts awarded by Michigan for new schools in this period amount to \$45.1 million.

Even though spending for schools and new equipment has run into many millions in the last few years, construction is far behind actual needs. It would take an investment of \$11 billion to overcome the critical shortage of facilities throughout the nation, in the opinion of the Federal Security Agency's Office of Education.

**Years of Underbuilding**  
 This huge backlog is the result of years of underbuilding plus a rapidly increasing population, FSA explains.

Enrollment in elementary and secondary schools, which totaled 23,300,000 during the 1945-46 school year, had jumped to 25 million—an increase of 1,700,000—by the fall of 1947. There was further big gain by the fall of 1948, resulting from the high birthrate in recent years.

When the 1949 school term starts next fall, the U. S. Office of Education expects 3 million children to sign another "00,000" will be added to this figure by the

**Monthly Traffic Toll in December Worst Since '47**

Michigan's traffic accident toll during the month of December was one of the most bleak in recent years according to a report released by Commissioner Donald S. Leonard, of the State Police.

There were an average of six persons met death, the total for the month being 184. This was the highest number of any month since November of 1941, when 219 lost their lives, and it exceeded December of 1947 by 49, or 26 per cent.

The injury toll climbed to 3,121 on a total of 148 cases and the greatest number for any month of the year. The total exceeded December 1947 experience by 562 or 17 per cent.

**Accidents Decrease**  
 But conversely, while there was an increase in deaths and injuries, there was a decrease in accidents. During December of 1948, 12,827 accidents were reported, which was 1,659 fewer, or 11 per cent, than the 15,516 in December of 1947. The reduction was attributed to better than normal driving conditions, with less ice and snow. The same conditions, however, contributed to the distribution and severity of the accidents which did occur.

Most of the fatality increase was recorded on the rural county road system, 47 persons being killed as compared to 19 in December of 1947.

**Expect Higher Figure**  
 On the basis of present figures, the death toll for all of 1948 stands at 1,477 persons. This exceeds previous estimates and the total is expected to be higher when delayed deaths, and before 1948 are reported. The present figure represents an increase of 30, or two per cent more than the 1,447 killed in 1947.

The records also show a total of 40,418 persons injured in 1948, an increase of 2,781, or seven per cent, over 1947. Accidents to date in 1948, an increase of 2,400 or two per cent.

Despite recent fatality figures, it still appears that the death rate for 1948 will be less than eight persons per 100 million miles of travel, which would be the lowest on record for Michigan.

**Police Warn Against "Peep-hole" Drivers**

"Watch out for 'peep-hole' drivers, and don't be one yourself," is the plea of the Birmingham Police Department.

Populistics Shift

Gazing darkly into the future they forecast a 1954-55 school enrollment which will top the 1947-48 figure by 6,200,000, requiring some 200,000 new classrooms for elementary and secondary pupils alone.

Other major factors, besides the long-time construction lag and the rapid rise in enrollment, contribute to the backlog of school building needs. One was the wartime shifting of the population to big industrial centers and the resulting increase in war's end. As a result, many school buildings are geographically obsolete, while facilities in rapidly growing areas are few and inadequate.

Then there is the problem of modernizing buildings. Many which have been in use for decades may prove to be potential fire hazards.

**See No Easy Solution**  
 Education officials can't see any day or early solution to their problems. High construction costs show a new building. Other types of public works—sewers, roads, hospitals—are gay behind with their building programs and their needs must be considered. New houses, commercial and industrial building continue to take a large share of available construction materials, manpower, and contracting and engineering talent.

The pressure of needs has recently brought an increase in the value of contracts awarded for educational building. The 1946 total was \$125 million while the 1948 total is expected to be about \$625 million.

With the situation what it is, however, education officials conclude dolefully that "it is evident that many years will elapse, even at this rate, before needs can be met."

**ATTENTION HOME OWNERS**  
 52 Years Know How  
 • METAL WEATHERSTRIPS  
 • ROCK WOOL INSULATION  
 • STORM SASH  
 • CALKING  
 CHAMBERLIN CO. OF AMERICA  
 Phone 1084

**WASHER TROUBLE?**

Until you get that beautiful New Maytag, let us keep your present washer in as good working order as possible, no matter what its age.

We can quickly tell you what is required in the way of servicing or replacement of worn out parts. We are proud of our record for efficient, prompt service.

Telephone today for a service man to call and give you an accurate estimate of cost.

**HAWTHORNE ELECTRIC**  
 162 No. Woodward  
 Phone 299-W

Phone VE 7-8500  
**Hubbard & Hubbard, Inc.**  
 GENERAL BUILDERS  
 14285 Schaefer Highway Detroit 27, Mich.  
 NEW CONSTRUCTION REMODELING ADDITIONS REPAIRS  
 COMPLETE BUILDING SERVICE  
 For over 40 years



"O.K., boys. Your troubles will be over if you'll look up fire extinguishers in the Yellow Pages."

**YOUR DREAM BECOMES A REALITY WHEN YOU BUILD WITH Quality Materials**

**FOR YOUR EXTRA ATTIC, BEDROOM or BASEMENT RECREATION ROOM**

- CELOTEX TILE AND PLANK
- KNOTTY PINE SHEET ROCK
- KNOTTY WHITE PINE PANNELLING
- 1" HARDWOOD PLYWOOD
- 1" FIR PLYWOOD

**FOR THE LIBRARY OR DEN MAHOGANY PANEL-ETTE**

**LAWSON & SON**  
 484 Forest Phone 1111  
 BUILDERS SUPPLIES  
 OPEN 7:30 A.M. TO 5:00 P.M.  
 We Close at 3:00 P.M. Saturdays

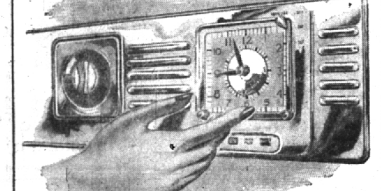
**RE-ROOF - NOW**  
 PUT ON A GOOD ROOF  
 • Sheet Metal  
 • Gutters  
 • Metal Decks  
 PHONE BIRMINGHAM 2080  
**W. P. Hickman Company**  
 1360 EAST MAPLE ROAD - BIRMINGHAM

**Are YOU just "One Jump Ahead" of the Thermometer?**

**If you order late- You may have to wait**

**COAL** Call your local coal retailer member of \*  
**HEATING OF GREATER DETROIT SERVICE**  
 A NON PROFIT CORPORATION FOR Better Home Heating  
 \* Also call him for 24-hour first-aid service for furnace or stoves—if he has no facilities, call CHERRY 4331.

**SET THE DIAL—AND FORGET IT!**



IT'S AS SIMPLE AS THAT WITH THIS **Completely Automatic ROPER GAS RANGE**

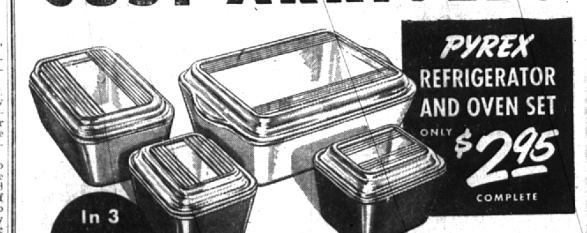
Yes, ladies, this sensational new Roper Automatic Gas Range will take you out of the kitchen. Now you can say good-bye to old-fashioned even watching.

Think of it, you can put a complete meal in the oven of this new Roper Range, set the automatic control and you are free to enjoy the rest of the day doing the things you've always wanted to do, then when you return, dinner will be perfectly cooked and ready to serve.

For happier, better living and more delicious meals, cook the Roper Automatic Way.

**CONSUMERS POWER COMPANY**  
 GET THE FACTS SEE IT TODAY!  
 FULLY AUTOMATIC MODEL SHOWN \$312.75  
 OTHER ROPER MODELS FROM \$146.75 - 5-7 YEARS

**JUST ARRIVED!**



**PYREX REFRIGERATOR AND OVEN SET**  
 ONLY \$295 COMPLETE  
 In 3 glowing colors  
**FOR COOKING, FOR SERVING, AND FOR STORING**  
 2 1/2 times as strong as ordinary glass!  
**HUSTON HARDWARE CO.**  
 "CONTINUOUS SERVICE SINCE 1909"  
 205 N. Woodward Phone 1501  
 OPEN FRIDAY EVENING