

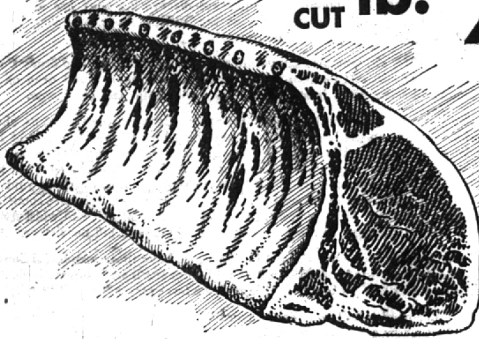
Look to A&P for Values Like These!

Reduced To A New Low Price!

PORK LOINS

RIB END CUT **lb. 25c**

WHOLE OR HALF PORK LOINS lb. 39c



Tender, Ready-to-Eat

COOKED PICNICS 29c

A Meat Treat at a Savings Lb.

Bacon Squares . . . Lb. **29c** **Pork Sausage** . . . 1-Pound Cello Bag **29c**
Smoked Ham . . . Lb. **47c** **Sliced Bacon** . . . Lb. **49c**

Finer Flavor—Natural Pink Color—A Texas Treat—Golden Brazilian
SHRIMP Large Size Lb. **59c** Jumbo Size Lb. **87c**

Red Ripe Hot House
TOMATOES 29c

Snow White Tender Budded **Cauliflower** . . . Lb. **29c**
 California, Green Pascal **Celery** Lb. **19c**
 Flavor Fresh Pack **Brussel Sprouts** Qt. Box **25c**
 Red Diamond—Large Size **English Walnuts** 1-Pound Cello Bag **39c**
 New Crop, Fancy Assortment **Mixed Nuts** 1-Pound Cello Bag **39c**

"Junkie" Chocolate or Peanuts
Quick Mix 12-Oz. Pkg. **32c**

Fresh, Solid, Crisp Head
LETTUCE 17c

Garden-Fresh, Crisp **Spinach** 10-Oz. Cello Bag **19c**
 Flavorful, Golden Ripe **Bananas** 2 lbs. **29c**
 New Crop, Paper Shell **Pecans** 1-Pound Cello Bag **39c**
 Blue Pirate Brand **Filberts** 1-Pound Cello Bag **35c**
 Imported, Tasty **Brazil Nuts** 1-Pound Cello Bag **35c**

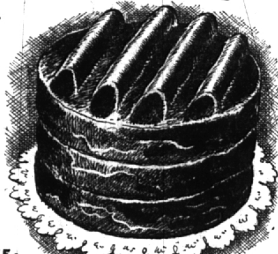
Fortified with Liver—Dog Food
Dash 2 1-Lb. Cans **29c**

Del Monte QUALITY FOODS
 Yellow Cling Sliced or Halved **Peaches** 25c
 Sweet, Tasty Bartlett **Pears** 29c
 Flavor-Fresh Fruit **Cocktail** 33c
 Sliced or Crushed, Fancy **Pineapple** 2 **27c**
 Golden, Unpeeled Halved or Whole **Apricots** 29c
 Dark Sweet or Royal Ann **Del Monte Cherries** No. 300 Glass **29c**
 Early Garden Fancy **Del Monte Peas** 2 15-Oz. Cans **33c**
 Del Monte Golden **Cream Style Corn** 2 No. 303 Cans **29c**
 Del Monte Solid Pork **Fancy Tomatoes** 15-Oz. Can **21c**
 Green and White Del Monte **Asparagus Spears** 15-Oz. Can **39c**
 Del Monte Vacuum Pack **Whole Kernel Corn** 2 15-Oz. Cans **29c**
 Flavor-Rich Del Monte **Tomato Juice** 46-Oz. Can **27c**
 In Delicious Tomato Sauce **Del Monte Sardines** 15-Oz. Can **19c**
 Lakeside Baker Maid **Honey Graham** 1-Lb. Box **28c**
 Crisp, Lightly Salted **Ritz Crackers** 1-Lb. Box **29c**
 Current, Quince or Crabapple **Ann Page Jellies** 15-Oz. Jar **19c**

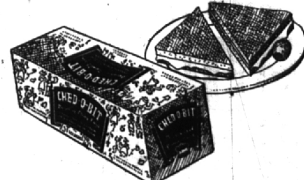


New Pack—Florida
ORANGE JUICE 25c
 Big 46 Ounce Can
 Bordo, Pasco and Other Brands

Crema Filled Devil's Food
LAYER CAKE 69c
 Home Made Flavor **Apple Pies** . . . Each **39c**
 Fresh Dated, White Sliced **Marvel Bread** . . . 1 1/2 Lb. Loaf **18c**
 Fruit Studded, Nut-Filled **Fruit Cakes** . . . 1 1/2 Lb. Size **1.25**
 Jane Parker—New 1-Lb. Box **Potato Chips** Lb. Box **65c**
 Mildly Spiced—8-inch **Pumpkin Pies** Each **39c**
 Danish Nut-Filled **Coffee Cakes** Each **39c**



Five Delicious Varieties
Fresh Cookies 2 Doz. 1 1/2 Pkg. **25c**
 Devil's Food and Gold Combination
Three Layer Cake . . . ea. **49c**



CHED-O-BIT
 Processed American
CHEESE FOOD 69c

Strictly Fresh, Large Grade "A"
Sunnybrook Eggs Doz. In Ctn **55c**
 New York Cheese **Sharp Cheddar** Lb. **69c**
 Frankmouth—Medium Sharp **AGED Cheese** Lb. **59c**

Creamery Fresh **Wildmere Butter** . . . Lb. **65c**
 Wisconsin Cheese **Mild Cheddar** Lb. **49c**
 All Popular Flavors
Ice Cream Pt. **29c** Qt. **57c**

A&P Super Markets
 THE GREAT ATLANTIC AND PACIFIC TEA COMPANY

These Prices Effective in All Super Markets and Self-Service Stores Only 718-181

Blue Diamond Almonds Lb. Cello Bag 39c	For Tollhouses Cookies Nestle's Morsels 6-Oz. Cello Bag 19c	Golden, Plump Tender Butter Kernel Corn 2 15-Oz. Cans 33c	Smooth, Creamy Shedd's Salad Dressing 1-Lb. Jar 29c Shedd's Thousand Island Dressing 9 Oz. Bot. 25c	Tasty Chicken Noodle Lipton's Soup Mix 3 5-Oz. Pkg. 35c	Peter Pan Plain or Crunchy Peanut Butter 12-Oz. Jar. 33c	Big Bath Size Sweetheart Soap 2 Bath Size Cakes 23c
--	---	---	---	---	--	---

A&P

- Cadillac **Apple Sauce** 3 15-Oz. Cans **29c**
- Ann Page **Creamy Smooth Salad Dressing** Quart Jar **39c**
- Packer's Label **Light Meat Grated Tuna Flakes** 6-Oz. Can **23c**
- Cold Stream **Pink Salmon** Lb. Can **37c**
- Tender Whole Kernel **Niblets Corn** 2 12-Oz. Cans **29c**
- Big Tender **Green Giant Fancy Peas** 2 12-Oz. Cans **35c**