

General Reinhart Defends West Point As Merely An 'Undergraduate School'

Hitting back at critics of the U.S. Military Academy at West Point, Gen. Stanley E. Reinhart, retired, in a talk before Birmingham Rotarians last week, said "too much confusion exists regarding its purpose."

Gen. Reinhart said everyone has his own opinion of West Point, depending on how he looked at the institution. "Girls think of it as a beauty spot, and boys think of the Black Knights of the Hudson, tourists look at it as a beauty spot, and ex-GIs remember it as having turned out some 'dictatorial Army officers,'" Reinhart stated. "It is a West Point. But to more than 15,000 of us who were graduated from West Point, it is all that anyone thinks of his alma mater and then some."

Reinhart was a West Point graduate in the class of 1916. "Too many people think that the cadets spend most of their time drilling. That is not true. From September to June, they take academic courses such as English, language, mathematics, history, and some courses in military subjects. Only a very few drills or parades are held. The real military training comes in the summer months," he explained. "West Point is really an undergraduate school which develops the character of future Army officers, as well as gives them a general academic background."

"Visit Changes Many Minds. When they are graduated from West Point, then they go into their respective corps for special-

ized military training," he continues. He told Rotarians how classes are conducted and something of the military atmosphere in which the cadets live. He invited any critic of West Point to go there and see actual conditions. "Most of the critics who have done this, have changed their tune," Reinhart said.

Barnum Students Present Christmas Play on Tuesday

The combined dramatics and vocal departments of Barnum Junior High School, under the direction of Miss Lyle McCormick and Miss Majel Breaette, will present "Why the Chimney Rang," on Tuesday, Dec. 20. The program will be given for the public in the school auditorium at 9 o'clock.

The traditional performance this year will see David Campbell in the role of Holger, Robert Owen as Sten; Sarah Reed as the Old Woman and Carol Baker as the Angel.

The gift bearers will be Sylvia Challen, Virginia Robinson, Patsy Booze, Barbara Updegraff, Fred Sheldon, Jack Eikenberry, John Hickman, Bob Lusecomb and Frank Phillips.

The student director of this year's production has been Gail Haugan. Stage properties were in charge of Linda Loomis, while Marjorie Knights was in charge of costumes. Peggy deBeaubien designed the program.

Miss Breaette's school chorus of 150 voices will sing several numbers. Pat Andrus will be the featured soloist of "No Candle Was and No Light." The echo chorus will be made up of Marlene Johnson, Sharon Stanton, Sue Slat, Beverly Stradinger, Virginia Wagner, Payson Chapman, John Robert, Pat Andrus, John Howard and Roger Johnson.

Janet Caryl will be the Girls Glee club soloist when they sing "Christmas Lullaby." "March of the Kings" will be sung by the Boys Glee club. The program will also include solo and trio numbers, as well as "Ave Maria," with Sheila Taylor, soloist.

Inquire about our plan. Make us your "banking connection."

Appointed Paymaster of GMC T&C Div.

Appointment of Fred Little as paymaster of GMC Truck & Coach division has been announced by W. Maybury, comptroller. Little has been in charge of timekeepers for the division. He began with GMC in 1940 as a timekeeper.

Little fills the vacancy created by the late Russell Smith. His duties will include the distribution of all paychecks, salary and hourly pay, comptroller. His home is at 1628 Henrietta.

Birthdays, anniversaries, guests, births, parties are all news—the society editor about them.

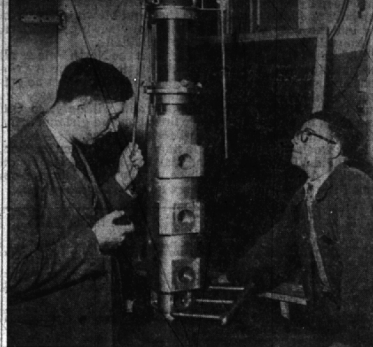
Snow! Sleet! Cold!
Let 'em come!

Your Ford will be ready if you bring it "HOME" for

- 1 ANTI-FREEZE
- 2 BRAKES
- 3 TUNE-UP
- 4 HEATER
- 5 WINTER LUBRICATION



See Your Ford Dealer!



CONSTRUCTING NEW MICROSCOPE—Mr. Claude Magnan, left, stands beside the microscope he is building which he thinks will magnify objects one million times. It will utilize the spray-off of atomic particles known as protons, and will therefore differ from the electronic microscope now in use. With this instrument, somebody ought to be able to find the needle in the haystack.

STATE OF MICHIGAN—The Probate Court for the County of Oakland.
At a session of said Court, held at the Probate Office in the City of Pontiac, Michigan, on the 15th day of November, A. D. 1949, the following was presented: The will of the late of the County of Oakland, Michigan, late of the County of Oakland, Michigan, deceased, to-wit: **ARTHUR E. MOORE**, Judge of Probate.
It is Ordered, That the 8th day of January, A. D. 1950, at nine o'clock in the forenoon, at said probate office, be and is hereby appointed for hearing said petition; and to receive notice thereof, by publication for three successive weeks previous to said day of hearing, in The Birmingham Eccentric, a newspaper printed and circulated in said County.

MR. STANLEY T. FORD
121 Poppleton Street
Birmingham, Michigan

STATE OF MICHIGAN—ORDER OF THE CONSERVATION COMMISSION, REGULATING FISHING IN CERTAIN WATERS OF ALQUA, HANSEN, HOUN, CASS, HILLSDALE, JACKSON, LEZELANAU, AND WASHTENAW COUNTIES.
The Director of Conservation, having made a thorough investigation relating to fishing in inland lakes recommends certain regulations.
THEREFORE, the Conservation Commission, by authority of Act 251, P. A. 1925, hereby orders that for a period of one year from January 1, 1950, it shall be unlawful for any person to take or attempt to take or to possess in any day more than a total of five brook, brown, cutthroat or lake trout in any combination from any of the inland lakes in this state and in any case not more than ten pounds and one trout.
Strictly enforced and ordered published this thirteenth day of October, 1949.
JOSEPH P. KAHLIY, Chairman
WAYLAND OSGOOD, Secretary

HARRY O. SMART
Life Insurance
Annuities
Estate Planning
164 W. Maple Phone 484

COMPLETE LINE OF HOME WORKSHOP TOOLS
CHRISTMAS LAY-A-WAYS AND TERMS
GLENN WING POWER TOOLS
OPEN EVENINGS 'TIL CHRISTMAS
1437 So. Woodward Phone B'ham 2240

CHRISTMAS DECORATIONS
EVERGREEN BOUGHS ROPING
Cemetery Wreaths and Grave Blankets
JOSEPH A. THEISEN
3826 N. Woodward, Royal Oak, Mich.
Flowers by Wire Phone LI 2-8400

MOVE WITH POTTER
And the ALLIED VAN LINES
POTTER
136 Brownell
MOVING AND STORAGE CO.
Phone B'ham 2112

Finance your automobile thru their bank. It is so much simpler... no fuss. I am sure you will be most satisfied

PEOPLE in our community who have used our service recognize this as good advice.

THEY will tell you that our plan is low-cost... convenient and without red-tape;

that it is easily understood... not involved;

that you do business with a friendly, local institution.

Thanks!

I will do as you suggest and use the

BIRMINGHAM NATIONAL

INFORMED BUYERS PREFER OUR BANK FINANCING

FINANCE YOUR NEW CAR THRU OUR BANK

Low rates start at **3 1/2% PER MONTH** slightly less than **34c PER MONTH** Per \$100.00 on New Cars

THERE ARE

PLUS FEATURES

IN OUR BANK

AUTO LOAN PLAN

The BIRMINGHAM NATIONAL BANK

BIRMINGHAM, MICHIGAN

Member Federal Deposit Insurance Corporation

Member Federal Reserve System

Lower-Priced Hudson

Taking the country by storm!

In two days, more than a million people flocked to see the new Pacemaker

and many thousands placed their orders for this exciting new car that costs less to buy... less to drive!

COME IN TODAY! See what the excitement's all about. Try the new Pacemaker! For here, at less cost, are all the beauty, roominess, riding qualities and safety that can come only with Hudson's "step-down" design!

Here, for instance, is a car that you can instantly see is the lowest-built of them all! Free-flowing, close-to-the-ground design telegraphs the fact that it has the lowest center of gravity in any American automobile—and as a result, you know instinctively, as

you view the exciting Hudson Pacemaker, that it hugs the road more tenaciously and is therefore America's safest car!

You quickly see, too, that this new member of the low-built Hudson family has full road clearance and more head room than in any mass-produced car built today—thanks to "step-down" design and recessed floor!

And amazing head room is only one kind of interior spaciousness you'll find in the economical, new Pacemaker. Through "step-down" design and ingenious use of space that is wasted in other makes of cars, this compact automobile of normal exterior width brings you more roominess and seat cushions that are up to 12 inches wider than those in even the most expensive cars!

It is no longer necessary to put up with crowding, for the Pacemaker provides more room for you than in any other make, at any price!

In fact, this car is so marvelous, and the performance of its new high-compression Pacemaker Six engine is so thrilling, that you can't begin to appreciate it until you see it and ride in it! Won't you accept our invitation for a demonstration ride in Hudson's new Pacemaker, today?

Available with Hudson's new

SUPER-MATIC DRIVE

Optional at extra cost

820 S. Woodward
Open evenings until 9
Phone 4400

Now... 3 GREAT HUDSON SERIES - ONLY CARS WITH "STEP-DOWN" DESIGN - SEE THEM TODAY!

CLOHSET & McCUTCHEON
HUDSON SALES AND SERVICE