

In spite of the confused times in which we now live, I believe that hard work, directed by reasonable intelligence, will provide you with security and sufficient happiness to make life worth living. To deserve success is the best way to get it... and to keep it.

The Birmingham Eclectic

PART 2

Thursday, August 11, 1949

The Charm and Atmosphere



of careful design

1240 Dorchester has it... the hallmark of good architecture so readily apparent in those homes planned and built by skilled craftsmen... that feeling of competence, good taste and charm you'll feel as soon as you enter the door. Come in!

First Floor: A large entrance hall to welcome your guests... a step-down living room 16 by 25, fireplace and huge adjoining porch... Dining Room 14 by 17... Library 11 by 13 1/2... pantry, kitchen and powder room and lavatory.

Second Floor: Five fine bedrooms (owner's room 15 by 17) and three baths... Sewing room or nursery... both front and rear stairs.

Insulated, of course... automatic heat... complete storms and screens... a dumbwaiter to save steps in case of sickness... wide beautifully planted lot.

Best of all... most interestingly decorated... and the new carpeting in the hall and most of the new drapes are included in the low price of \$24,500. Here's a lot of living and a lot of charm in the best of neighborhoods. Adams School is just around the corner. Let's look today!

CALL

MAX BROOCK INC.
REALTORS
ESTABLISHED 1903

300 S. Woodward Birmingham 1212

MOVE WITH POTTER
And the ALLIED VAN LINES



POTTER MOVING AND STORAGE CO.
138 Brownell Phone B'ham 2112

SNOWED UNDER



IS PAYING RENT getting you down? Would you like to own your own home? You can if you finance through our practical loan plan. Total cost is minimized... each monthly payment reduces a sizable amount of interest and principal owed. See our loan officer now for details on your new home.

Let "Rent" Buy You A Home

BIRMINGHAM FEDERAL

SAVINGS AND LOAN ASSOCIATION

Woodward at Maple

Phone 1040



Member of Federal Home Loan Bank System and Federal Savings & Loan Insurance Corporation

Two Road Projects Confirmed by City

Improvement of Eton road, from Yorkshire to Derby, with an asphaltic concrete surface was approved Monday night by the city commission when it confirmed the assessment roll to defray the cost of the project. The estimated cost of \$7,857 will be collected over a two-year period.

Roadrolling of Madison, between Poppleton and Hunter, was also confirmed by commissioners. To cost \$1,025, it amounts to about 46 cents a foot assessment against benefiting property.

Cites Hazard of Double Parking

City Commissioner Ralph A. Main this week called attention to what he termed "a serious and dangerous" double-parking problem along West Maple.

"This is a much more serious and dangerous problem than over-parking," he told Chief of Police Ralph W. Moxley at Monday night's city commission meeting.

Moxley replied that his department has instructions to concentrate on this double parking matter, particularly during heavy shopping hours.



INSURE
with the
HARTFORD
INSURANCE
COMPANIES

All Types of Policies
FIRE, MARINE, AUTOMOBILE
LIABILITY - SUREBONDARY
PHONE 328-J
Birmingham Representative
RICE A. HOWELL
WABEEK BUILDING

Phone Co. 'Sorry' It Can't Comply With City Request

The Michigan Bell Telephone Co. is "very sorry" that it cannot "comply" with the resolution adopted by the city commission two weeks ago regarding the name for the new Birmingham telephone exchange, Bell President T. N. Lacy informed commissioners by letter Monday evening.

"We are sure we will be able to choose a name that will be satisfactory both from a telephone usage standpoint and the residents of Birmingham," Lacy's letter said.

"Mr. Walter B. Fausner, our local manager, has discussed this resolution with all members of the commission, explaining that in order to fit Birmingham into the plan of direct customer dialing to Pontiac and its suburban points and Detroit and its suburban points, and also for the projected operator dialing of long distance calls, it was necessary for us to change the letters for the Birmingham office which eliminates 'P' as the first letter of the central office name.

"Our present plans provide that the first letter of the central office name will be either 'M', 'N' or 'O', and the second letter of the name will be 'G', 'H', or 'I', Lacy concluded.

The company had originally considered "Plehurst" as the possible central office name, and the city commission had suggested to the company that it be changed to "Pleety Hill."

Wrong Number

A very strict lady was called out of bed one morning at 5 a.m. The following dialog ensued:

Voice—Hello.

Lady—Hello.

Voice—How are you this morning?

Lady—All right.

Voice—Then I guess I must have the wrong number.

The Urge to Build

Now is the time to select a Building Site for that new home you have been waiting and planning for—

We have many beautiful home sites available and will be glad to show them to you and to assist by giving essential information as to restrictions, type of home allowable, side lines and other important data.

We welcome your inquiries.

WALSH, JAMES & WASEY Co.

Realtors

431 So. Woodward Ave. Birmingham 4900

QUALITY

Combination Doors

30" x 80"—BRONZE WIRE
1 1/4" CLEAR WHITE PINE
RAISED PANEL Only \$15.50

33x15 Bronze Wire Each
Combination Basement Sash \$2.75

Ready Mix Cement 93c 100-lb. Bag

Ready Mix Mortar 90c 100-lb. Bag

1/2-in. Fir Plywood 12c Sq. Ft.

BIRMINGHAM LUMBER

AND SUPPLY COMPANY, INC.

1025 Haynes St. Phone 5373

HOURS: 7:30 TO 5:30 MON. THRU FRI.
7:30 TO 1:00 SATURDAY

Bits of Birmingham

It's a tough cruel world. Two boys started out on dad's orders to get some gas for the lawnmower. By the time they reached the Quorton gas station, Birmingham looked like a long walk, so they investigated hoses on the gas pumps. Just as the boys were about draining the gasoline into a can, the squad car happened by so they came to Birmingham, anyway. After a man-to-man talk with Police Chief Ralph W. Moxley, the lads were released to their parents, somewhat sadder, but much wiser in the proper methods of securing go-juice for the lawnmower.

It might be a new way to keep cool, or it might be coincidence, but Sunday, at about the middle of the morning, this Wanderer passed a house with an old-fashioned ice cream freezer standing near the side door. Literally wrapped around the freezer, with its icy contents hugged closely to his tummy, lay a shaggy, woolly and very fat little dog. He was protecting the freezer from passing picker-upper, he was certainly making himself comfortable while on duty.

It was truly a "Happy Birthday" for the Birmingham Community Market last week, according to Owner Dominic Caputo. A great deal of it was due to a surprise feature provided by one of his customers. It seems one of the market's regular patrons came in and presented the staff with a lovely chocolate birthday cake, complete with two candles. Caputo told this Wanderer that it was one of the nicest things that ever happened to him and added, "In these days not many people take time out to do nice things for others, and I think this was pretty grand!"

Mrs. Arthur Fries of Arlington drive in Beverly Hills stopped by Saturday morning to tell this Wanderer of an unusual plant which she has at her home—an evening primrose. The plant, high in the early evening hours, the time depending on the temperature and humidity, according to Mrs. Fries. The blooms are of a very delicate yellow, each having four petals. "They spin open," Mrs. Fries said. "My husband took a colored movie of them under artificial light and was able to get one flower as it spun its petals into full bloom." The blooms, which last but one evening, have a delicate fragrance which fades away quickly. Web-

ster describes the plant as "typifying a family (Unagraceae) of plants, mostly with yellow nocturnal flowers."

The Eccentric's ad man Hal Buerge and family added a new wrinkle in the vacation-party birthday routine when they took off Friday for a week's stay at Burt Lake, up near the Straits. Buerge, the Missus, daughters Jan, Susie and Betty, and Chuck the pup stopped on the way to the lake to celebrate Jan's birthday. They tell us the affair was complete even to a birthday cake and all the presents.

Birds and bees department: An observant reader of The Eccentric called this Wanderer last week to report something new in the Animal Kingdom. It seems the young lady was driving along a nearby highway when she noticed the following sign:

For Sale
Irish Setter
Eggs
Now she's wondering.

SCREENS AND STORM SASH
• WINDOWS ALL SIZES
• CUPBOARD DOORS
• FLUSH DOORS
WOODCRAFT CO.
1184 Grant at Ruffner

RALPH A. MAIN
CIVIL ENGINEER and SURVEYOR
Subdivision Design and Layout
Certified Lot Survey
Wabees Bldg., Birmingham
Phone Bham 721

INSURANCE BONDS
THE BIRMINGHAM AGENCY
CHAS B RANDALL
OSCAR P PETERSON
Insurance for Every Need
PHONE 840
1065 WOODWARD-BIRMINGHAM

GAS HEAT

Is Now Available to You
If You Have An Approved Permit

HAVE YOUR GAS EQUIPMENT
INSTALLED BY A
LOCAL ESTABLISHED CONTRACTOR

Joseph B.
MOERY
1728 W. Maple
Near Chesterfield
PH. 1510

Equipment Handled
By Us Is All
A.G.A. Approved
FREE ESTIMATES
GLADLY GIVEN

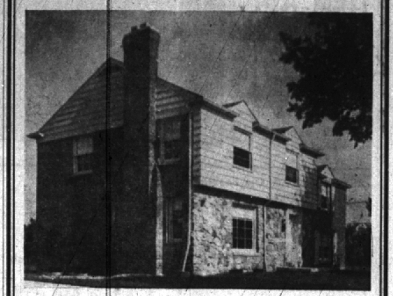
THE KEY TO OWN YOUR HOME

Making the key to your own home marks an important step in your life. The key to added security is title insurance on your home. One premium protects you indefinitely. And, of course, you'll want to get your policy from the oldest title company in Michigan.

Abstract and Title GUARANTY COMPANY

735 GRISWOLD • DETROIT • Woodward 3-5810
15665 W. McNichols Rd., Detroit • 109 E. 9 Mile Rd., Ferndale
18 W. Lawrence, Pontiac • 46 S. Gratiot, Mt. Clemens

BLOOMFIELD VILLAGE



148 WILLIAMSBURY

Here is a fine answer to your requirements for a new home.

Brand New Colonial—proudly built of brick, stone and clapboard. Glazed porch. The Kitchen—a delight to see... Even better to work in. Leads of cupboards. Breakfast nook with built-in leatherette seats. Upstairs to satisfy your bedroom problem, are 4 extra large bedrooms with 2 tile baths.

For your enjoyment—a recreation room beautifully finished in knotty pine with a built-in bar and an asphalt tile floor. Large 80 x 125-foot lot. \$29,500.

We invite you to see for yourself anytime.

SNYDER & BENNETT
INC.
REALTORS
239 S. WOODWARD BIRMINGHAM 1400

Hubbard & Hubbard, Inc.

GENERAL BUILDERS
14285 Schaefer Highway Detroit 27, Mich.
NEW CONSTRUCTION REMODELING
ADDITIONS MAINTENANCE
COMPLETE BUILDING SERVICE
FOR MORE THAN 40 YEARS
Phone VE 7-4500 B'ham 1448
T. N. Hubbard

GARAGES

FRAME — BRICK — BLOCK
14 x 20 Garage \$364 20 x 20 Garage \$545
We Do Cement Work
Porches, Driveways, Sidewalks
STUART E. SHEILL
1501 PENISTONE ROAD
BIRMINGHAM FHA TERMS
PHONE 532

What Did We Forget?

No need to let household worries follow you on vacation! The HOME SAF T CHECK SERVICE will handle all the details for you. Here are a few things the HOME SAF T CHECK SERVICE offers you:

- Daily check of your property (inside and out).
- Check of plumbing and heating equipment.
- Check of refrigeration and deepfreeze equipment.
- Check for water damage due to roof leak.
- Obtaining and supervising any maintenance work required in your absence.
- Forwarding of First Class Mail.
- Other services to meet individual requirements.

This new service is offered for your protection. Don't impose on your friends and neighbors while you're away. Let the HOME SAF T CHECK SERVICE be your caretaker!

For Full Details, Call
RICHARD S. STEWART, B'ham 5005
Birmingham 4091 After 5 P.M.
THE HOME SAF T CHECK SERVICE
"A New Type of Property Management"—In Cooperation with
GEORGE E. MARKLEY
Selected Real Estate
460 West Maple Birmingham 5005