

Tournament Plans Announced by MGA

The Michigan Golf Association held an organizational meeting at Idlewild Golf Club, Plymouth, Friday evening. It was decided by the team captains of the MGA golf teams, that each club will be represented this season by

NOW IS THE TIME
To Have Your Station Wagon CALKED and VARNISHED for the Summer.
Call R.O. 0274 for an Estimate

one team comprised of six men and two alternates.
The meeting was in charge of Frank Durak, tournament chairman, aided by Tex Ellison of Birmingham who is serving this season as tournament publicity director for the MGA, and Hugh Ardoyne, director of league play.
Sixteen teams will compete in the loop this summer with entries from every section of the Detroit area, Windsor and Flint, Sylvan Glen, Sunnybrook and North Hills will represent the Birmingham area in the league. Edgewood may field a team.
League play will commence on Sunday, May 15, and continue into next fall. Don Patterson, owner of the Idlewild club, is the new MGA president.

STAR RUG CLEANING
Benefits Your Home
3 WAYS

- GREAT BEAUTY**—Your Star-cleaned rugs will have all the brightness and beauty of new floor coverings, making all your furnishings look lovelier.
- LONGER LIFE**—By removing all the dirt and grit that cut your rugs' fibers, Star keeps your floor coverings looking beautiful years longer.
- THOROUGH CLEAN-NESS**—Star-cleaned rugs are sanitary, so that children can play on them in perfect safety. Guard your family's health with Star-cleaning.

Phone Star Today!
STAR CARPET CLEANING CO.
PHONE 10-100
No Toll Charge

TACKLED-DOWN CARPETS CLEANED ON YOUR OWN FLOORS IF DESIRED
Star's expert craftsmen will do this work economically at your convenience. Phone Star today.

EXTRA LARGE FOR Extra Juice! ORANGES

Florida ORANGES
126 Size doz. 49c

Produce Values

Young California CARROTS 2 bunches for 15c
Fancy CAULIFLOWER, large size each 29c
Sunlight LEMONS, 252 size doz. 49c
Maine POTATOES, U.S. No. 1 pk. 75c

GROCERY DEPARTMENT

Chips FLAKES large pkg. 29c
CORN FLAKES, large pkg. 2 for 35c
WHEATIES, 12 oz. pkg. 2 for 41c
Karo SYRUP pint bottles 19c
Campbell TOMATO SOUP 3 cans 29c
CRISCO 3 lb. can 89c
Hills BROTHERS COFFEE, all grind lb. 55c
New Instant LAUNDRY STARCH pkg. 19c
Adams ORANGE JUICE 46 oz. can 29c

MEAT DEPARTMENT

Genuine Spring Leg of Lamb lb. 69c

Rib End PORK LOIN ROAST lb. 55c
Chick POT ROAST OF BEEF lb. 49c
Freshly Killed SPRING CHICKENS lb. 49c
Armed Star SLICED BACON lb. 67c
Land-O-Lake BUTTER lb. 73c
Kosher MARGARINE lb. 27c

BIRMINGHAM FRUIT CO.
FREE DELIVERY SERVICE
PHONE 65 124 N. WOODWARD

"Design in Nature" Will Open May 1 at Cranbrook Institute

An exhibition entitled, "Design in Nature" will be on display at the Cranbrook Institute of Science from May 1 to May 22.
This exhibit is circulated by The American Federation of Arts in Washington, D. C., through the courtesy of the Board of Trustees of Art. Miss Belle Bos, supervisor of education, assembled the exhibit in a rich and colorful display of shells, crystals and textiles to demonstrate that "design is to be found in nature; being familiar, is too often forgotten."

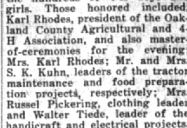
"Design in Nature" presents within a limited scope some of the designs found in the vast world of nature, and conversely, how in turn these designs are modified and transformed by the artist-craftsman.
Thanks to the camera lens, our vision of natural design has been widely extended. Now, hundreds of times enlarged, we are able to see microscopic forms, and by means of the telescopic lens, the spiral nebulae. Through the eye of the lens, one notes the fine proportions and strength of common shoots and the vitality of line in many of our flowers, so strikingly we view these things with surprise and wonder.
Shells, crystals, photographic enlargements and textiles bring attention nature's forms in a new setting, displayed colorfully to make us stop and look.
Leaves that suggest wrought iron, "Hosetals", a plant related to ferns, which are similar to fluted marble columns, lilies revealing beautiful lighting fixtures—all these and many more reveal the artist's debt to nature.

City Buys Gravel for Season's Use

The city commission Monday night approved the purchase of 25,000 cubic yards of gravel from the Oakes Gravel Co. to be used on city streets this season.
The city will pay \$1.84 cu. yd. for 12,000 yards of base course gravel, and \$1.86 per yard for 5,000 yards of top course and 8,000 yards of patching and resurfacing gravel.

Bloomfield 4-H Rating High At Achievement Day

Members and leaders of the Bloomfield 4-H Club won many awards in the annual County 4-H Achievement Day held last Saturday, at the Pontiac high school.
This year's winning program, Fred Gettel, assistant Oakland County Agricultural Agent, presented roses to the many Bloomfield area volunteer 4-H club leaders of the country in recognition of their effort and time spent in behalf of the hundreds of 4-H boys and girls. Those honored included: Karl Rhodes, president of the Oakland County Agricultural and 4-H Association, and also master-mentor for the year, Mrs. S. K. Kuhn, leaders of the tractor maintenance and food preparation projects, respectively; Mrs. Russell Pickering, clothing leader; and Walter Tiede, leader of the handicraft and electrical projects.



Dress Review
The feature of the evening was a dress review given by the several hundred girls participating in clothing projects. The narrows for the review was done by Shirley Rhodes and Dorothy Stevens, Bloomfield Club members.
Both the styling committee included Karl Rhodes, Jr., and Elmer Rhodes, also of Bloomfield. The local club was also represented by Margaret Pickering modeling a school costume of wool jumper and blouse, and Barbara Kuhn wearing a typical teen-age outfit of wool skirt and bright blouse.
Both girls made their costumes under the direction of Mrs. Russell Pickering, clothing project leader. Pin awards were given to the 15 county members in the review.

Win Coveted Award
The Bloomfield club handicraft display won the coveted first place Service Club award over the other Oakland County contestants. The advanced electrical display won second place.
Local 4-H members were represented in six types of projects, making up the county 4-H handicraft display. These included tractor maintenance, electrical, clothing (four year) knitting and food preparation (making county).
The county honor roll for outstanding work included Tom Tiede, leader in the county 4-H year handicraft.

craft: Karl Rhodes, Jr., in second year handicraft; George Pickering, John Ziegelbauer in advanced electrical; Margaret Pickering in clothing IV and Donna Case and Dorothy Stevens in food preparation IV.
Blue ribbons were awarded to Toby Wells, Tom Tiede, Elmer Rhodes, Karl Rhodes, Jr., George Pickering in the handicraft projects; George Pickering and John Ziegelbauer, electrical; Donna Case and Dorothy Stevens, food preparation IV; Donna Case, Margaret Pickering and Barbara Kuhn, clothing IV; George Pickering, tractor maintenance; Barbara Kuhn, knitting.
Red ribbons went to Buster



SCOUT NEWS
BOY SCOUTS OF AMERICA
Don S. Adams School
The following members of Pack B-8 attended the huge Scout exhibit at Convention Hall, Detroit, over the weekend: Burr Loomis, David Masterton, Roy Severs, Richard Saeed, Jim Silbar and David Parrie.
Pack B7, Pierce School
The Katogee Indian Society will be the star attraction when this pack meets this evening at Pierce school. Wearing authentic Huron costumes and head dress, the members will demonstrate various ceremonial dances and other Indian lore.

Explanatory Letter to Be Attached to Notices of Hearings
A general statement of city special assessment policy, explaining what happens while a special assessment district is before the city commission, is to be mailed to property owners in future city assessment districts, the commission decided Monday evening.
After looking over City Commissioner Theron Van Dusen's draft of a letter to be attached to all future notices of special assessment hearings, the commission sent it to the city attorney for double checking before it is released to the public.

Minhinick, Jack Minhinick, David Ford, Rob Minhinick and Ken Kuhn in handicraft; Barbara Kuhn, food preparation; Ken Kuhn, tractor. White ribbons to Floyd Essinger and Bill Minhinick in handicraft and Margaret Pickering, food preparation.

BULOVA TRADE-IN Sale
A LIBERAL ALLOWANCE FOR YOUR OLD WATCH

The Kincaids
for JEWELRY
213 E. Maple

TRADE-IN YOUR OLD WATCH
Prices include Federal Tax
WEAR A NEW BULOVA!

UPHOLSTERING • SLIP COVERS
• DRAPERIES • FREE ESTIMATES -
Schumacher & Waverly Fabrics
Pontiac Upholstering Mfg. Co.
2555 Dixie Hwy. Ph. B'ham 4366-J
Pontiac Ph. 37241

A Good Name To Remember
Phone CHERRY 7670
Johnson AWNINGS

Awnings are only as good as the material and craftsmanship that go into them. Quality has been a Johnson awning tradition in Detroit for more than 67 years. The reward of keeping faith with customers is growth—the privilege of serving new customers like yourself who come to us recommended by friends.
Get Two Bids—Be Sure One Is Ours!
THE JOHN JOHNSON Co.

ELLIOTT FURNITURE COMPANY
Located on East Side of Dixie, 1/2 Mile South of Waterford

FINE Upholstering
Our twenty-six years in Pontiac is your guarantee of satisfaction. Our upholstering craftsmen are experienced tradesmen qualified to reupholster and reupholster, if necessary, your most treasured pieces. Reupholstered furniture may also be reupholstered in our complete cabinet and finishing department. Slight additional charge for reupholstering the material and fabric selection is complete.

Custom Made FURNITURE
Furniture is an investment for years to come. When you buy, select the material and factory where fine furniture is manufactured. See our plant on view every day. Before you buy, we are equipped to completely manufacture furniture for those hard-to-fit pieces. Before you buy, visit Elliott's, the largest upholstery shop in Oakland County.

ELLIOTT FURNITURE COMPANY
5390 Dixie Highway Phone 3-2641

SHERWIN-WILLIAMS SWP HOUSE PAINT
Your home is your biggest investment! Protect it thoroughly, with America's favorite house paint! White, colors.

SHERWIN-WILLIAMS ENAMELOID QUICK-DRYING ENAMEL
Brighten-up furniture, woodwork, toys and tools with this easy-to-use, quick-drying one-coat enamel. Many gorgeous colors.

\$6.15 per gallon (Covers less than one gallon per gallon paint)
\$1.15 per pint

Scott's LAWN ... MORE FUN!
Carpet your lawn with vigorous, colorful Scott's grass. It's easy-do it yourself in a few minutes.
In play areas where you need more roughed in 100-1000 SEED SPECIAL PURPOSE SEED. It is also for Dense Shade, poor dry soils, and terraces. 1 lb. - \$1.15 5 lbs. - \$5.45.
Scott's SPREADERS make possible quick and accurate feeding, seeding and weeding. Rubber tread. Medium lawn size - \$9.95.

Scott's WEED & FEED
Exclusive SCOTTS development that kills broad-leaved weeds as it feeds your grass. Dry compound, easily applied. Shaker box - \$1.00. Large size - \$3.50.

HUSTON HARDWARE CO.
"OUR FORTIETH YEAR"
205 N. Woodward Phone 110

Saturday, April 30th, 10 a.m., None Earlier
A SPECIAL SHIPMENT BY AIR OF FREE ORCHIDS
TO THE FIRST 200 LADIES REGISTERING FOR WARFIELD PAINT COMPANY'S
"Spring Color Show"
EVERYONE WELCOME—NO PURCHASE NECESSARY
SOUVENIR GIFTS FOR ALL ADULTS
FREE PAINT
1st PRIZE \$30.00 IN PAINTS OF YOUR CHOICE
2nd PRIZE \$20.00 IN PAINTS OF YOUR CHOICE
3rd PRIZE \$10.00 IN PAINTS OF YOUR CHOICE
WARFIELD PAINT COMPANY
408 N. Woodward, Birmingham Phone 2397
AUTHORIZED DEALER — PONTIAC VARNISH COMPANY PRODUCTS