

As you go about your daily affairs, aren't you astonished to find so few people genuinely happy? Perhaps not one in ten thousand people who tread our globe have found the source of priceless happiness.

SEVENTY-FIRST YEAR—NO. 28

## BLOOMFIELD HILLS COTTAGE

How many have asked so frequently... for a gate or guest lodge in Bloomfield... a couple of acres... livable now with room to remodel later... Vaughan School...

Here it is—and the owner can move tomorrow! A former chauffeur's cottage on 2 acres, half-wooded, and a spectacular hilltop view across the Bloomfield valley. A combination Living and Dining Room, two Bedrooms and Bath and a fully modern Kitchen with Hotpoint dishwasher and disposal unit. Two additional Bedrooms and Bath on the second floor. Automatic heat, softener and grade entrance to the Laundry. Living Room carpeting and drapes included.

For future growth there's a large connecting garage which would make the most striking studio Living Room imaginable—fully 40 feet long. It's a "big-little" home now—your own ideas will make it distinctively yours in the future. In the meantime it's attractively livable now—and ready to move in!

The price is best of all... only \$19,750. You'll want to be the first to see it. Call right now!

CALL  
**MAX BROOCK INC.**  
REALTORS  
ESTABLISHED 1895

300 S. Woodward Birmingham 1212

## A REAL BARGAIN AT \$5,000

Over 600 feet adjoining Bloomfield Hills Golf Course, commanding spectacular view of fairways and greens. Almost three acres of land with virgin timber and high knoll. Ideal for your dream home, affording atmosphere, seclusion and convenience of location. Let us tell you more about it.

**SNYDER KINNEY & BENNETT**  
INC.  
239 S. Woodward Birmingham 1400

## .. FEATURING ..

- PIETY HILL**—Three Bedroom, fine lot, Trees and Shrubs. Two car garage, Hot Air heat, good condition. One of the "Better Buys" at \$12,000.00.
- GRAY SHINGLE**—Attractive Living room, Dining Room and Sun Room, including carpets. On 2nd floor are Three Bedrooms and Tile Bath. Playground and Garage. Oil heat \$12,800.00.
- COLONIAL RANCH**—1½ Story Brick. Living Room, Dining L, 2 Bedrooms, Tile Bath on 1st. Bedroom space on 2nd. Basement Play-room. Air conditioned—Oil Heat. \$13,000.00.
- BEVERLY HILLS**—Excellent Neighborhood—Attractive setting. Pine paneled fireplace in 13x25 Living Room, Dining El, Den or Bedroom, Lavatory and Kitchen on 1st. Two Bedrooms and Tile Bath on 2nd. 2 car garage—Immediate possession. \$18,500.00.
- BRICK COLONIAL**—New and Attractive Three Bedroom. This is indeed a desirable home in excellent condition. Close to transportation. Gas Heat—Screened Porch—Downstairs lavatory. Priced at \$20,900.00.
- BLOOMFIELD VILLAGE**—On high site, this Four Bedroom Frame Colonial has large Living Room, Dining Room, Lavatory and Kitchen with breakfast nook. Two Car garage. Oil heat. It is fresh and clean inside and out. Offered at \$24,000.00.

Call us for appointment to show.  
**WALSH, JAMES & WASEY Co.**  
431 So. Woodward Ave. Birmingham 4900

## Bits of Birmingham

**Mrs. L. R. Wyckoff, 29830 Franklin road,** is among the mid-west farm homemakers who are cited in articles in the October issue of Capper's Farmer. Mrs. Wyckoff draws comment for a suggestion that appears in the Rural Home department of the nationally-circulated farm magazine. "I pin together all soiled hose and socks at the toe of each pair on the clothesline and in the mending basket until put away. I use tiny pins and have never had a rip or tear," she wrote the magazine.

There seems to be quite a bit of confusion in the minds of residents of the Birmingham school district regarding the new telephone switchboard at the Hill School. As explained by School Superintendent Dwight Ireland, the switchboard handles calls only for the Board of Education offices, Baldwin Senior High and Barnum Junior High. Calls to these three places must be made through the Hill switchboard (whose new number is 5500). Ireland points out: "The switchboard has nothing to do with any of the system's elementary schools," he stated this week. "Any person who wishes to contact any member of the Baldwin or Barnum staff, or the Board of Education offices, should call 5500, then ask for the particular office they desire. All calls to elementary schools have to be placed directly according to the numbers listed under Birmingham Board of Education in the telephone book. There has been no change in the elementary school numbers."

**F. Ross Dickenson, 11 years** a resident of Birmingham, has just been elected president of the Townsend Co., of Brighton, Pa., this Wanderer has been notified.

committee chairman an hour before the regular weekly luncheon.

One day last week a reader of The Eccentric came in to look up some information in some of the very old issues. Members of the staff investigating the matter which came from the room found him practically drooling as he read of potatoes only a few cents a bushel, eggs less than 10 cents a dozen, and top-quality steaks for about a dollar a pair. (P.S. We can't say we blame him—we were born and haven't fully recovered yet.)

After a more or less complete tour of the business section the other day this Wanderer stopped in a local eatery for a cup of coffee. Two small boys, not more than seven or eight years old, were nearby, waiting for their ice cream cones. One asked the other how he liked school, and found out he didn't like any part of it. He agreed wholeheartedly, but came right back with, "Well, there's one thing about it, a fellow gets a chance to meet some girls!"

What was the rapid building up of the city in the area of E. Maple and east of the Grand Trunk right-of-way, more and more youngsters are being enrolled at Adams school. Several parents there have approached the city commission with the idea of constructing some sort of pedestrian overpass across the tracks at Buckingham. This would make it much easier for the kids to get to school, and not subject them to the traffic perils along Maple, the parents argue. But commissioners have pointed out that this solution is non-existent for the city recently vacated the scrub end of Buckingham, from Cambridge to the tracks. Parents are now looking for another angle.

Both City Manager Don Egbert and City Forester John Johannott want it understood that they have not objected to planting of new trees on W. Maple, per se. They argue that local citizens should show as much interest in existing trees—their trimming and other needed care—as they do in trees that this solution is non-existent for the city recently vacated the scrub end of Buckingham, from Cambridge to the tracks. Parents are now looking for another angle.

When confronted with a "detour" sign, motorists automatically divide into two groups: those who figure, "Well, I'd better follow the new route; the sign must be there for a reason." The second bunch, which are in the minority, say, "Phooey—I can't see anything torn up so I think I'll take a chance and continue right through." This second procedure too often leads to complications, as attested by the plight of one Wayne county woman, a motorist who tried to negotiate the closed portion of Pierce street. She swung around the barricade at Merrill street and suddenly discovered she couldn't go any further. So she began to turn around. In so doing, she backed her car so the bumper snagged atop the new curb. She tried to go forward, but her wheels spun in the soft concrete which had just been poured. She immediately shut off the motor, jumped out to see what was wrong. Her right foot went up to the ankle in the wet concrete. Several members of the contractor's crew then got behind the car and lifted the bumper so she could pull ahead. The rate of speed with which she pulled out and south on Pierce left no doubt in this Wanderer's mind that from now on she probably would become a member of the first group mentioned above—those who take the long way around to save trouble.

Rotary District Governor John F. Smith of the Windsor (Ont.) club will visit the Birmingham club next Monday noon at the Community House. To get a preview of club activities (as well as to give some helpful hints) he is meeting with club officers and

## Acres of NEW Homes!

Yes, that's exactly what we said—and we have them in any area, or price, or size range that you might suggest. Right now there is more new building going on than the community has ever seen in its broad lifetime. If it's a new home that you've been waiting for all these years consider these:

Ranch Homes: \$16,500, \$19,500, \$29,500, \$32,500, \$36,000, \$43,000, and \$49,500.

7 Story and one-half, Cape Cods, etc., from \$12,700.

Colonials of every type and design you might wish for—Early American, New England Farmhouse and Monterey. Rooms vary from 3 bedrooms to 5, all have oil heat, tile baths (1½ to 4) some have games rooms, libraries or large 1st floor recreation rooms. Prices are: \$16,500, \$21,500, \$25,500, \$29,500, \$35,000, \$43,000 and \$45,000.

Locations are manifold—south Birmingham, east side, west side or beyond the City Limits. You name your requirements—call us and examine the wide selective choice at your disposal.

We are always at your service.

**SNYDER KINNEY & BENNETT**  
INC.  
239 S. Woodward Birmingham 1400

**EARNINGS START 1<sup>ST</sup>**  
When you open an account by the 10th...

Too, your savings grow faster here—with the help of our better-than-average savings return. Save with SAFETY... your account is INSURED to \$5,000 by an agency of U. S. Gov't. Open your account with any amount.

**2% CURRENT RATE OF EARNINGS**

**BIRMINGHAM FEDERAL**  
Savings and Loan Association  
Woodward at Maple—Phone 1040  
Member of Federal Home Loan Bank System and Federal Savings & Loan Insurance Corporation

**BLOOMFIELD VILLAGE**

210 Waddington

This fine English residence is an ideal home for the larger family where excellent schools and proximity to stores and transportation are requisites.

First Floor: Living room 16.6 x 25; dining room 14 x 17; kitchen, breakfast room, lavatory and butler's pantry.

Second Floor: Four family bedrooms, two tile baths. Master bedroom has natural fireplace and large dressing room. Maid's room and bath also.

Below Grade: Recreation room with natural fireplace.

Additional Data: Three car attached garage, new pressure oil burner, nicely landscaped lot, low taxes, carpeting and refrigerator included.

Inspection may be conveniently arranged by calling us for appointment.

Price Reduced for Immediate Sale

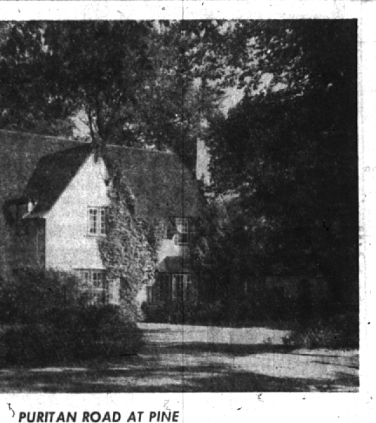
**BENJAMIN and STEPHENS, INC.**  
219 S. Woodward — Realtors — BIRMINGHAM  
PHONE 4122  
Open evenings until 9  
Sunday 2 to 6

**Life Insurance Counselor**  
**Harry O. Smart**  
178 N. Woodward Room 205  
PHONE 484

**RALPH A. MAIN**  
CIVIL ENGINEER and SURVEYOR  
Subdivision Design and Layout  
Certified Lot Surveys  
Wabek Bldg. Birmingham  
Phone B'ham 721

**INSURANCE - BONDS THE BIRMINGHAM AGENCY**  
CHAS B RANDALL  
OSCAR P PETERSON  
Insurance for Every Need  
PHONE 840  
106 S. WOODWARD - BIRMINGHAM

## (USE ECCENTRIC WANT ADS FOR BEST RESULTS)



PURITAN ROAD AT PINE

Well designed English Architecture and a Quarton Lake Estates locale make for ideal living. You are close enough for all school service and walking to the shopping center.

Significant conveniences on the first floor aside from the usual rooms are these:

- Attractive music room.
- Children's playroom.
- Full sized breakfast room.
- Five bedrooms, three baths, attic storage and service stairs make it ideal for parents with children.
- Lovely mature planting highlights the double size (167 x 150) site. J-M insulation and storm windows insure economical automatic heat.
- Here is a real home of remarkable value.
- Good, reasonable terms may be had.

**SNYDER KINNEY & BENNETT**  
INC.  
239 S. Woodward Birmingham 1400