

REDEEM
YOUR P & G
COUPONS
AT
KROGER
SAVE
65¢
ON
SOAP

Homemakers' Sale

Who planned this special sale for you
Who have a cleaning job to do.
"Put a smile on your house" with these supplies
...Hurry to Kroger for housekeeping buys.

Cleaning Supplies & Housekeeping Needs!

WIN! \$1,000 A YEAR FOR LIFE
OR \$20,000 CASH
OR \$22,500 OTHER CASH
PRIZES IN

DUZ Contest

DUZ, OXYDOL, RINSO, SUPER SUDS

Lge. Pkg. **33¢** FREE ENTRY BLANKS AT KROGER

WIN! \$5,000 CHARGE/ACCOUNT
at any Dept. store. Nearly 1000 other prizes in

SWIFT'S CLEANSER CONTEST

SWIFT'S BAB-O, AJAX 2 Cans **23¢**

FREE ENTRY BLANKS AT KROGER.

Given! 2 Dishcloths
with bottle cap or label from

STA-FLO STARCH

qt. **22¢**

Mail to: Staley, Dept. K, Decatur, Ill.

4-PIECE PLASTIC REFRIGERATOR/SET
\$1.50 VALUE **75¢** AND 1 BOX TOP FROM DREFT

BREEZE, DREFT

Lge. Pkg. **31¢**

Free order blanks at Kroger

Nylon Bath Brush only \$1.00
with 2 wrappers from bath size of

PALMOLIVE SOAP 2 Bath Size Cakes

27¢

Lux, Lifebuoy, 2 Reg. 19¢ TO \$4.00 VALUE

QUIKUT KNIFE only 35¢
and 2 labels from

OLD DUTCH CLEANSER

2 Pkgs. **23¢**

Free order blanks at Kroger

ROUND or SIRLOIN **STEAK** Kroger—Cut Light Beef **79¢** Lb.

CHUCK ROAST Kroger—Cut Light Beef **59¢** Lb.

Center Slices—Mild, Sweet Cure

Sliced Bacon . . . Lb. **59¢**

FRESH—Drawn, Ready for the Pan

Stewing Chickens Lb. **69¢**

Swift's Brookfield

Pork Sausage . . . Pound Roll **49¢**

Fresh, 7 Rib End

Pork Loin Lb. **59¢**

Kroger—Fresh . . . Only One Grade

Ground Beef . . . Lb. **59¢**

No Waste—Easy to Prepare

Rosefish Fillets . . Lb. **33¢**

Johnson's **Glo-Coat Wax** . . . Pt. **59¢**

Roman Cleanser . . 1/2 Gal. **17c**

Giant Box **Kleenex** 300 Ct. **27¢** Box

Pure Granulated **Sugar** 10 Lb. **87¢**

Gold Medal or **Pillsbury Flour** 25 Lb. **1.89**

Buy 2 Loaves—Double your savings

Kroger Bread . . 2 1/4 Lb. **27¢** Loaves

Kroger Orange **Juice** 46-Oz. Can **25¢**

Cut Bile WAX **Paper** . . . Roll **25¢**

SPOTLIGHT **Coffee** . . . Lb. **40¢**

RIFZ **Crackers** . . Lb. **29¢**

U. S. No. 1 Grade **CHIPPEWAS Mich. Potatoes**

Fine White Cookers **15 Lb. 47¢ Peck**

SEEDLESS—California White **Grapes** Lb. **11¢**

Michigan **YELLOW**—Best of the Crop **Onions** . . . 10 Lb. **39¢** Bag

Crisp, Fresh, Large Stalks **Pascal Celery** 2 for **35¢**

Stock up at this low price!

Armour Treet 12-Oz. Can **45¢**

ARMOUR CHOPPED HAM 12-Oz. Can 55¢	ARMOUR Corned Beef Hash Lb. Can 35¢
SPIC & SPAN Cleans in a Jiffy Lb. Pkg. 23¢	LITTLE BO PEEP AMMONIA qt. 21¢

New Pack Kroger Low Priced **Green Giant Peas** . . 2 No. 300's **39¢** Cans

LIPTON'S TEA 1/2-Lb. Pkg. **62¢**

48 Ct. Tea Bags **55¢**

RED STAR YEAST
Full Wrapped Cakes
2 Cakes **9¢**

VELVET PEANUT BUTTER
24-Oz. Jar **55¢**

HURRY!
REDEEM YOUR
P & G COUPONS
TODAY
AT
Kroger

Varsity Club Has Eye on a Telefoto Lens

With the opening of school last week, school clubs again swung into activity. Among these was the Varsity Club, composed of boys winning letters in varsity sports.

The main purpose of this club is to promote school spirit and assist in the athletic program. This season one of the club's major undertakings will be to buy a tripod and a telephoto lens for the motion picture camera purchased by this organization last year. The camera is for the purpose of photographing teams in action. To help with the cost of these items and encourage school spirit, the club plans to sell Birmingham emblems for car windshields.

Other projects planned for the year are helping judge the traditional field day, making arrangements for the annual pep rally before the Thanksgiving Day football game, and possibly putting on a special basketball game.

Serving as officers this semester are president, Miss Louise; vice-president, Walt Bode; secretary, Rollie McGinnis; treasurer, Clayton Jones; and historian, Jerry Neumann.

Active members are Bob Little, Dick Murray, Jack Goodrich, Ken MacQueen, Rollie McGinnis, Lee Hanson, Jerry Neumann, Jim Patterson, Bob Hardy, Dale Pearson, Sandy Gruber, Pat Wall, John North, Mac Booth, Dick Halpin, Bill Downey, Chuck Marshall.

Other Active Members: Dick Helgesen, John Fricker, Bob Webster, Frank Weaver, Jack Adams, Neil Stoll, Gene Walden, Larry Young, Don McDaniel, Ted Harper, Bud Carter, Tony Miller, Carsten Dalton, Dick Dean, Duke Layland, and Bob Folin.

New Letter winners in track, baseball, golf and tennis will be initiated later this fall. These include Pete Hartsug, Tom Nolle, Phil Sarver, Ken McIntire, Rick Cunningham, Stu Peck, Stan Hopkins, and Ronnie Israel.

From January to May 1948 Navy and Coast Guard crews destroyed 143 floating Japanese mines which had just reached the West Coast since the recent war.

STATE OF MICHIGAN—ORDER OF THE CONSERVATION COMMISSION—PULPED CHISEL.

The Director of Conservation, having made a thorough investigation relative to the hunting of ruffed-grouse, recommends certain regulations.

WHEREFORE the Conservation Commission, by authority of Act 236, P. A. 1948 season, to take more than three birds in one day, to have more than fifteen in possession, or to take more than fifteen during the season.

Directed, signed, and ordered published this second day of August, 1948.

DOUGLAS R. McLOUTH, Chairman
WAYLAND OGDON, Secretary
P. J. HOFFMASTER, Director of Conservation.

Plenty of Fun and Food Enjoyed by Baldwin Pupils as Clubs Resume Activities

Lots of fun and plenty of food were enjoyed by the school clubs this past week.

K. S. T. began Friday night's party by traveling down to Eastwood and then to Don Larson's home for refreshments and a musical program. Committee heads were Eastwood, Bob Webster; entertainment, Guy Tuncillife; food, Dick Kelly; president, Rollie McGinnis, general chairman.

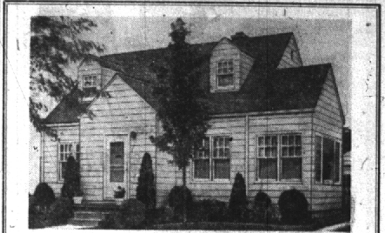
The same night Sapphire club entertained guests with a wiener roast and treasure hunt at Sonja Bador's home. Chairman for the party were Norma Lee Kass, invitations, Frances Ritter, food, Roberta Connor, transportation.

Francis opened her home Saturday afternoon in Franklin Hills for a picnic luncheon and mock meeting given by Tri-A Club. Chairman Martha Miller, food, Virginia Carter, cars; Sarah Breitenstein, entertainment; and Sue Manning, invitations, planned the party.

Saturday night, Tara Club invited the new girls to a cake party held at Judy Henderson's home before leaving for the Coronation dance. Those working on refreshments were Sherill Williams, president of the club; Helen Heming and Adella Wilson.

C. T. A. planned a treasure hunt and wiener roast at Chris Adams' home for the girls Sunday afternoon. Chairman for the party were Carolyn Metzger, general; Mary Kemp and Margie Vose, transportation, food, and invitation.

Sunday evening Emerald Key scouted around in cars on a treasure hunt and then returned to the Ranch Room for refreshments and dance. General Chairman Marilyn Staley, planned entertainment; Peg Thompson, invitations; Janet Lockrow, transportation; Helen Staley, food.



ALSIDE BAKED ENAMEL ALUMINUM SIDING

The future's answer to today's building improvement problems.

Three beautiful colors, white-grey cream, ALSIDE GIVES YOU—

Permanent beauty, vermin proof, rust and corrosion proof, and insulation.

ALSIDE HAS—

A permanent baked enamel finish, a patented lock-joint for complete wind and rain proof construction.

EASY TO APPLY

on both old and new houses
Modernize or build new. No waiting for materials. No painting required. Write, call, or stop in the office for an estimate on your needs. No obligation.

I. H. BENJAMIN, Dealer
980 Chester Phone 5409-W

NEW LOW PRICES ON GENERAL ELECTRIC Water Heaters

Now, General Electric offers a new guarantee and ten-year protection plan to purchasers of General Electric Automatic Electric Water Heaters. Think of it—ten full years of protection for you on your new galvanized-tank water heaters. Now . . . you can have all the hot water you need—when you need it—and at low cost too. See your General Electric retailer today for details.

RIBBONS of long-life Calrod® encircle every tank, to provide efficient, economical heating.

THE "AUTOMATIC BRAIN" of your water heater keeps the water at uniform temperature.

*Three inches of fiberglass insulation completely surrounds the tank, to keep the heat where it belongs—in the water.

*Trade-mark Reg. U. S. Pat. Off.