

Just as God's jewels stud the nightly sky, and thus beautify the blue-black reaches of the heavenly vault, so do good and fine thoughts and deeds increase the loveliness of your life. God made the stars and planets . . . and you . . . and lives of you in the quality of LOVE.

# The Birmingham Eccentric

PART TWO

SEVENTY-FIRST YEAR—NO. 36

BIRMINGHAM, OAKLAND COUNTY, MICHIGAN, WEDNESDAY, NOVEMBER 24, 1948 \$2.50 PER YEAR (In Oakland County)—SINGLE COPIES, 5c

## LAKE HOME IN WEST BLOOMFIELD

Here's a year 'round home . . . all white masonry and recently built . . . as modern as tomorrow . . . overlooking a mile long vista of sparkling water. The beach is excellent . . . hard sand and gently sloping to depth . . . fine for children . . . with a terrace and outdoor grill at the water's edge . . . beach house and new metal adjustable dock.

Large, bright living-dining room, 17 by 25, with stone fireplace . . . big living porch overlooking the lake . . . scientific kitchen . . . first floor laundry and utility room . . . complete bath . . . four comfortable bedrooms the owner's bedroom has a stone fireplace, too . . . a second complete bath.

Deep, three car garage . . . tool house . . . both deep well and lake water systems . . . curbed circular drive . . . beautiful trees.

Included in the price: complete furnishings, two refrigerators, range, Bendis, deep freeze, rug and drapes . . . new furniture, all garden tools, hoses, sprinklers, etc., beach furniture, boat, dock, everything to live a comfortable recreational existence.

Here's everything in one place . . . a fine home, completely furnished . . . recreational facilities for all the family, all year 'round . . . only 45 minutes from downtown Detroit . . . reasonably priced. Let's look today!

CALL

**MAX BROOCK INC.**  
REALTORS  
ESTABLISHED 1928

300 S. Woodward

Birmingham 1212

## Thanksgiving

We Are Grateful

for our community, for the many benefits to be derived from living here, and for the hundreds of fine families who help, with their spirit of cooperation, to make this one of the outstanding rural cities in our country.

We are grateful also, for whatever contribution we have made in helping so many splendid people find comfortable and happy homes in this area.

**WALSH JAMES & WASEY CO.**

431 So. Woodward Ave. Birmingham 4900

## YOU Give The Answers So We Can Have A BETTER Birmingham

The newly-created Birmingham City Plan Commission has a job on its hands in determining just what sort of city we citizens want Birmingham to be years from now. In planning this future, certain of TODAY'S problems have a direct bearing on this future. By discovering what desires we local residents have NOW, and by learning what civic problems we are most concerned with TODAY, the Plan Commission can proceed much faster and with greater accuracy.

To that end, then, The Eccentric in the next several issues will print the following questionnaire regarding certain PRESENT and FUTURE matters of particular importance. It is hoped that EVERY citizen will answer this questionnaire IN FULL, and mail it to The Editor, Birmingham Eccentric. We, in turn, will transmit all questionnaires to the Plan Commission for their analysis and relation to Birmingham's future.

If, for some personal reason, you do not wish your name to accompany the questionnaire to the Plan Commission, so indicate in the space reserved below. We will then cut your name and address off the bottom of the questionnaire before it is presented to the Plan Commission. However, to attest to the sincerity of your answers, The Editor must insist on your signing the questionnaire before it is mailed to him. If you desire to remain anonymous to the Plan Commission, he will see to it that your name does not accompany the questionnaire any further than his desk.

Is your street gravelled? \_\_\_\_\_ Rosolled? \_\_\_\_\_ Permanently surfaced with concrete or blacktop? \_\_\_\_\_ Does it have curb and gutter? \_\_\_\_\_ What would you eventually like your street to be? \_\_\_\_\_ Does your sewer back up? \_\_\_\_\_ How often? \_\_\_\_\_ Do you have a water softening outfit in your basement? \_\_\_\_\_ Would you like the city to provide water softening for everyone at the city wells at about \$6.00 per service per year? \_\_\_\_\_ Do the police patrol your neighborhood? \_\_\_\_\_ How often? \_\_\_\_\_ Think the city needs more policemen? \_\_\_\_\_ More squad cars? \_\_\_\_\_ Is there a playground or recreational area nearby? \_\_\_\_\_ Do your children use it? \_\_\_\_\_ How often? \_\_\_\_\_ Is it properly equipped? \_\_\_\_\_ What extra, needed equipment would you suggest it needs? \_\_\_\_\_

Live near a school? \_\_\_\_\_ How far away is it? \_\_\_\_\_ Need one closer to your neighborhood? \_\_\_\_\_ Are you in favor of an immediate start on a new high school to relieve present overcrowded school conditions? \_\_\_\_\_ Do you find it tedious to locate a downtown parking space for themselves? \_\_\_\_\_ If not, how many years before this would happen? \_\_\_\_\_ Do you think the city's Municipal Park (bounded by Bates, Martin, Henrietta and Merrill streets) should be converted into a parking lot? \_\_\_\_\_ Does your neighborhood need any additional street lights? \_\_\_\_\_ If so, where? \_\_\_\_\_

Traffic lights? \_\_\_\_\_ Where? \_\_\_\_\_ Stop signs? \_\_\_\_\_ Where? \_\_\_\_\_ Other remarks \_\_\_\_\_

★ ★ ★ ★ ★ ★ ★ ★ ★ ★ ★ ★ ★ ★ ★ ★

NAME \_\_\_\_\_ ADDRESS \_\_\_\_\_

Do you have any objection to having your name accompany this questionnaire to the City Plan Commission? YES \_\_\_\_\_ NO \_\_\_\_\_

MAIL THIS QUESTIONNAIRE TO MANAGING EDITOR, BIRMINGHAM ECCENTRIC

## Former State Pastor, 70, Is Building Own Church

Mrs. Marjorie Morse of the Apple Orchard Nursery School, S. Adams road, has found the current issue of Life Magazine deeply interesting. Her father, Rev. Charles Morse, now of Wheatfield, Ind., is featured in one of the magazine's picture stories, as he personally constructs a new church. Morse is no novice in building churches, for this is his tenth. He began many years ago when he was named state director of Town and Country churches for the Baptist Churches in Michigan. His duties, as outlined by the

of Wheatfield, traveling about 150 miles each Sunday.

The couple, who went to Indiana about 10 years ago, is well known through this vicinity, and will spend the Thanksgiving holiday with their daughter here.

## On Navy Destroyer

Richard R. Bryce, seaman apprentice, USN, son of Mrs. Rose Moorman, of 367 Hamilton st., is serving aboard the destroyer USS Hyman, cruising in the Mediterranean Sea as part of the Sixth Task Fleet. Mediterranean duty will afford the ship's personnel an opportunity to visit many of the countries of Europe and Africa.

**Investment Securities LISTED - UNLISTED. LETT EIS**  
Member Detroit Stock Exchange  
Woodward 5-4300 B'ham 3211  
Woodward 2-3855 after 6 p.m.

**RALPH A. MAIN CIVIL ENGINEER and SURVEYOR**  
Subdivision Design and Layout Certified Lot Surveys  
Wabek Bldg. Birmingham  
Phone B'ham 721

**INSURANCE - BONDS THE BIRMINGHAM AGENCY**  
CHAS B RANDALL OSCAR P PETERSON  
Insurance for Every Need  
PHONE 840  
165 WOODWARD, BIRMINGHAM

**Here it is, Neighbors!**  
The latest thing in clean heat! Reading Briquets—made with Pennsylvania hard coal. Burn Reading Briquets and enjoy genuine anthracite cleanliness, comfort and convenience. Give them a try!

**PARKS COAL CO.**  
575 ETON RD.  
PHONE 2020

## Bits of Birmingham

This Wanderer will take a few poetic liberties with an old phrase to have it read, "North is north and south is south, and she hopes the twain will meet." Mrs. Vera F. Meyers arrived in Birmingham last week to direct the three-act home talent program which the Exchange club will present next Thursday and Friday evenings, only to find that her luggage, including personal apparel as well as stage props, was on a bus merrily headed for Birmingham, Ala. The lady and the luggage finally got together after many anxious moments on the part of Mrs. Meyers.

A story in Household magazine entitled "The Peanut Tree" written by Marian Marlyn Kubacka of Maplebridge road was called to this Wanderer's attention by a localite. We promptly buzzed Mrs. Kubacka for some background information on her literary endeavors. She's been working with the AAUW writing group and had started out writing as a hobby three years ago. Three of her stories have been sold for magazine publication.

National Association of Real Estate Editors for having had the best real estate page in the country for 1948. The contest was judged by H. D. Crawford, director of Journalism, American University; Charles S. Stewart, National Association of Real Estate Boards and Walter Onslow, National Association of Home Builders, and included papers from every American city of over 500,000 population. The award was made as the annual convention of the National Association of Real Estate Editors in New York City last week. In addition to the initial honor, Baumgarth was elected national president of the association.

With the approach of Thanksgiving this Wanderer is always reminded of a prayer heard one morning in a bleak mission in the (More BITS, Page 2, Part 2)

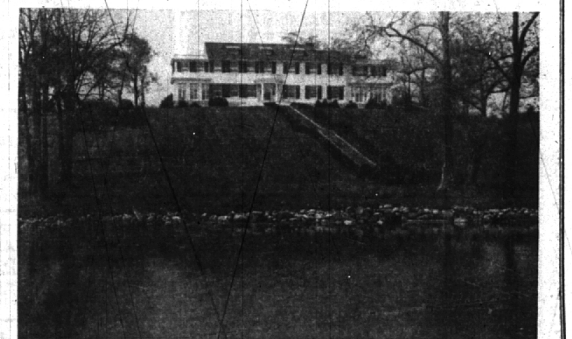
**H. O. SMART  
Life Insurance**  
164 W. Maple  
Phone 484

Today is the day you were going to start to save, here.. with safety and profit.

We have an excellent, safe job for your idle savings that will bring you liberal earnings.

**BIRMINGHAM FEDERAL Savings and Loan Association**  
Woodward at Maple — Phone 1040  
Member of Federal Home-Loan Bank System and Federal Savings & Loan Insurance Corporation

## On Beautiful Wing Lake . . .



**Wonderful Location** —  
Year around living, 30 minutes from General Motors Bldg. 380 feet of lake frontage—11 acres, represented by 14 building lots. They can be sold or used separately. Just think—swimming, sailing, fishing, skating.

**Buildings** —  
Main building contains 4 bedrooms, 3 baths. Separate buildings are ranch-style help quarters and stable of 16 box stalls with room for 16 additional box stalls.

**Possibilities of Use** —  
There are a great many possible uses of this property which make it most attractive as an investment possibility. See it with our representative and let us help you with our suggestions.

**SNYDER KINNEY & BENNETT INC.**  
339 S. Woodward  
Birmingham 1409

**WHY DRIVE?**

U.S. WEATHER BUREAU FORECAST:  
**STORMY WEATHER**

**—GO GREYHOUND AND TAKE IT EASY!**

Avoid bad weather driving worries. Travel in snug, deep-cushioned comfort by Greyhound. Greyhound's time-saving schedules make it easy to shop, travel or commute. And remember you save money, too. There are no parking fees, and it costs less to go Greyhound than to drive your own car.

**GREYHOUND TERMINAL**  
391 S. Woodward Phone 348

**GREYHOUND**