

From man's uncontrolled greed and selfishness there emerges over the face of our civilization many human afflictions. One of them is what we call depression; another is war; others are famine and pestilence. If you would be sustained in peace and plenty, reside in LOVE.

The Birmingham Eccentric

PART TWO

SEVENTY-FIRST YEAR—NO. 34

BIRMINGHAM, OAKLAND COUNTY, MICHIGAN, THURSDAY, NOVEMBER 11, 1948

\$2.50 PER YEAR (In Oakland County)—SINGLE COPIES, 5c

BROOK BRIEFS...

White Colonial

This all white Colonial in the Quarton School district is also within a short walk of Holy Name. It's an older home but one which has been modernized with a new tiled Bath and automatic heat. The three Bedrooms are comfortable, the Kitchen is a new one and the location is ideal. The price, too, is right..... only \$15,750.

All on one floor

Recently built of brick on a hill-top, this attractive home is half way between Bloomfield Hills and Pontiac and near schools and transportation. It's as neat as a pin and has three Bedrooms and a nice Bath plus the usual arrangement of living space. The lot is 200 feet deep—plenty of room for hobbies. Priced at \$16,500.

Colonial Cottage

Only a step from the school, there's a lot of living in this all brick ranch home. Two Bedrooms and Bath on the first floor with a large Bedroom on the second. Oil heat. The lot is a big one—75 by 130, and it's all fenced. The owner will accept \$3500 down from a responsible buyer. It's a buy at \$13,750.

CALL

MAX BROOCK INC.
REALTORS
ESTABLISHED 1925

300 S. Woodward

Birmingham 1213

H. C. W.
AGENCY

WHEN YOU SUFFER A LOSS

Your friend in need at claim time is a trained insurance counsellor. He knows exactly what protection your policy provides; knows how to get claim adjusters on the job; will work with them and you to save you time, trouble and worry. Remember, it costs no more to get the best in insurance protection, service and advice. Why not make it a point to have us go over any insurance matters you have in mind. You will be under no obligation and it may pay you in safety and savings.

HUGH C. WHITE
AGENCY

217 PIERCE STREET
(Opposite Municipal Building)
BIRMINGHAM, MICHIGAN
SERVICE AS NEAR AS YOUR
TELEPHONE .. BIRMINGHAM 3302-3303
— Insurance Since 1920 —

REMODELING or BUILDING? WE HAVE WHAT YOU NEED

Strand Steel Garage Doors 8 ft. x 7 ft. CANOPY TYPE \$87.00 TRACK TYPE \$58.00 Install them yourself. They come complete with instructions.	PLASTERBOARD 5c per sq. ft. Knotty Pine PLASTER BOARD 7½c per sq. ft.
---	---

Complete Stock of Fir and White Pine

Combination Doors Insulation Special!!
from \$18.50 Quality, clear white pine
See Them Before You Buy 2" Balsam Wool 6c sq. ft.
We also stock rock wool, non-lite, fiberglass and insulation.

NAILS!! Sold With All Lumber Orders

Gibraltar READY MIX Cement BAG 93c

BIRMINGHAM LUMBER
AND SUPPLY COMPANY, INC.
1025 Haynes St. Phone 5373
Five Blocks South of Maple, between Hunter & Adams
HOURS: 7:30 to 5:30 MON. THRU SAT.

YOU Give The Answers So We Can Have A BETTER Birmingham

The newly-created Birmingham City Plan Commission has a job on its hands in determining just what sort of city we citizens want Birmingham to be years from now. In planning this future, certain of TODAY'S problems have a direct bearing on this future. By discovering what desires we local residents have NOW, and by learning what civic problems we are most concerned with TODAY, the Plan Commission can proceed much faster and with greater accuracy.

To that end, then, The Eccentric in the next several issues will print the following questionnaire regarding certain PRESENT and FUTURE matters of particular importance. It is hoped that EVERY citizen will answer this questionnaire IN FULL, and mail it to The Editor, Birmingham Eccentric. We, in turn, will transmit all questionnaires to the Plan Commission for their analysis and relation to Birmingham's future.

If, for some personal reason, you do not wish your name to accompany the questionnaire to the Plan Commission, so indicate in the space reserved below. We will then cut your name and address off the bottom of the questionnaire before it is presented to the Plan Commission. However, to attest to the sincerity of your answers, the Editor must insist on your signing the questionnaire before it is mailed to him. If you desire to remain anonymous to the Plan Commission, he will see to it that your name does not accompany the questionnaire any further than his desk.

Is your street gravelled?..... Roaded?..... Permanently surfaced with concrete or blacktop?..... Does it have curb and gutter?..... What would you eventually like your street to be?..... Does your sewer back up?..... How often?..... Do you have a water softening outfit in your basement?..... Would you like the city to provide water softening for everyone at the city wells at about \$..... per person per year?..... Do the police patrol your neighborhood?..... How often?..... Think the city needs more policemen?..... More squad cars?..... Is there a playground or recreational area nearby?..... Do your children use it?..... How often?..... Is it properly equipped?..... What extra, needed equipment would you suggest it needs?.....

Live near a school?..... How far away is it?..... Need one closer to your neighborhood?..... Are you in favor of an immediate start on a new high school to relieve present overcrowded school conditions?..... Do you find it tedious to locate a downtown parking space?..... Think municipal parking lots would receive enough cash customers today to pay for themselves?..... If not, how many years before this would happen?..... Do you think the city's Municipal Park (bounded by Bates, Martin, Henrietta and Merrill streets) should be converted into a parking lot?..... Does your neighborhood need any additional street lights?..... If so, where?..... Traffic lights?..... Where?..... Stop Signs?..... Where?..... Other remarks.....

NAME..... ADDRESS.....
Do you have any objection to having your name accompany this questionnaire to the City Plan Commission? YES..... NO.....
MAIL THIS QUESTIONNAIRE TO MANAGING EDITOR, BIRMINGHAM ECCENTRIC

Bits of Birmingham

This community really has some ardent Republicans, at least two of whom were not able to stomach Truman's re-election. One man has posted his home with the following sign: "NO DEMOCRATS OR PROGRESSIVES ARE PERMITTED TO ENTER THESE PREMISES." And this Wanderer learned of a woman who, last Wednesday morning, was so sick of the results that they affected her physically—she had to spend a couple days in bed she was so ill over the outcome. As for this Wanderer, we don't think the world is coming to an end that soon.

If you happened to visit the Municipal Building this week, perhaps you heard some noisy pounding. Well, the wall between the city manager's and city clerk's offices has been moved five feet west to provide more room for official city records. Just another indication that the city is continuing to grow at a rapid rate.

Birmingham is proud of its Community House, and justly so. It seems a shame, therefore, when youngsters will deliberately spoil the purpose of this splendid civic center. It was erected, and is maintained, to give the residents a place for community enjoyment. No matter how good a time one has there, the pleasant memories of it are destroyed when, upon leaving the building, those who drive cars find their tires flat. That happened last Friday evening. It was cold, rainy, and just plain nasty out. Few of the persons there who had this happen to their cars, left what was otherwise a very pleasant evening, without a lot of dark thoughts. And, furthermore, this Wanderer fails to see where there was any fun in taking out the valves in the first place. Sounds sadistic, to us.

Back to the recent election. The Eccentric has been informed

INSURE with the HARTFORD INSURANCE COMPANIES

All Types of Policies FIRE, MARINE, AUTOMOBILE LIABILITY—BURGLARY
PHONE 328-J
Birmingham Representative
RICE A. HOWELL
WABEEK BUILDING

INSURANCE - BONDS
THE BIRMINGHAM AGENCY
CHAS B RANDALL
OSCAR P PETERSON
Insurance for Every Need
PHONE 840
106 S. WOODWARD - BIRMINGHAM

RALPH A. MAIN
CIVIL ENGINEER and SURVEYOR
Subdivision Design and Layout
Certified Lot Surveys
Wabek Bldg. Birmingham
Phone Bham 721

NEW HOMES

THREE BEDROOM BRICK COLONIAL
2 car solid masonry garage, 70 foot lot, oil A C heat, 2 extra lavatories (1 tiled), sodded yard, many extras. \$27,500. ARGYLE BETWEEN MAPLE AND MIDVALE.

BRICK THREE BEDROOM RANCH
2 car attached garage, 105 foot lot, full basement, oil A C heat, extra fire place in basement. \$23,500. WEST MAPLE AT GLENHURST.

BRICK 2 AND 3 BEDROOM RANCH STYLE
Full basement, oil A C heat. Down payment \$11,500 to \$14,750. DORCHESTER AND BUCKINGHAM STREETS BETWEEN ETON AND ST. ANDREWS, NORTH OF MAPLE.

FRAME 2 AND 3 BEDROOM ONE AND ONE AND ONE HALF STORY
Tile features, full basement. \$10,550 to \$10,600. BENNAVILLE BETWEEN EDGEWOOD AND GRANT.

FRAME ONE AND ONE HALF STORY BUNGALOWS
Full basement, oil A C heat. \$9,975. Down payment as low as \$75 plus mortgage costs. HAYNES AND HOLLAND AT ETON, SOUTH OF MAPLE.

Most of these are ready for immediate occupancy. Some with FHA 4% mortgages with a commitment of \$8,100. The others have conventional type 4½% mortgages with excellent commitments.

THESE HOMES OPEN AFTERNOONS AND EVENINGS OR BY APPOINTMENT.

HOUSEMAN SPITZLEY CORP.
REALTORS
Southfield at 14 Mile Road
Birmingham 4463 or 2390

Earning More Money? Be Smart... Save Part

Careless spending may be fun, but there's for greater satisfaction in providing for your family's future enjoyment and security. When times are good, save more of what you earn—the insured safety way. Here your savings are INSURED to \$5,000 by a U.S. Government agency.

CURRENT RATE OF EARNINGS 2%

BIRMINGHAM FEDERAL

Savings and Loan Association

Woodward at Maple — Phone 1040

Member of Federal Home Loan Bank System and Federal Savings & Loan Insurance Corporation

that the Wednesday, Nov. 3, edition of the Detroit Free Press is now worth \$2.50 if you have a complete copy of it. Seems that it has become a collector's item because of the contents of its editorial page that day. It was caught way off base. (More BITS on Page 2, Part 2)

Life Insurance Counselor
Harry O. Smart
176 N. Woodward Room 205
PHONE 484

THIS TIME is the BEST TIME to OWN REAL ESTATE

*Regardless of political convictions it is the hallmark of work and the only basic security!

SNYDER KINNEY & BENNETT
INC.

239 S. Woodward

Birmingham 1400

S. H. JENSEN

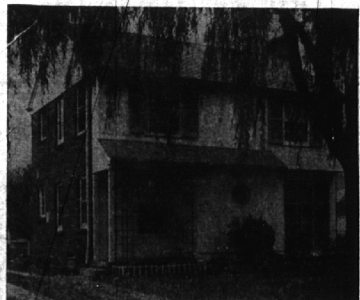
Formerly of Birmingham
Now Associated with
W. V. Doran, Registered Broker
in
Fort Lauderdale, Florida

Contact him for rentals of Homes, Apartments, or Hotel Rooms, for the Season or any part.

Address 225 S. E. 2nd Ave. Wire or Phone 4491 Collect

A SMALL FAMILY COLONIAL

FOR WHICH YOU HAVE BEEN WAITING



Close to Quarton School, on a shady lane, this home was custom built with exceptional care in 1947. Let's walk through and see the 12x21 ft. living room, the separate dining room and modern cheery kitchen with breakfast bay. upstairs you will find three bedrooms and a tiled bath. You will like the charming decorative scheme of this house with the carpets and drapes included in the sale. There is a lavatory, garage, air conditioned oil heat, storm windows and screens. For those who require a small home in an excellent neighborhood, we highly recommend this offering at \$19,500.

WALSH, JAMES & WASEY Co.
431 So. Woodward Ave. Birmingham 4900