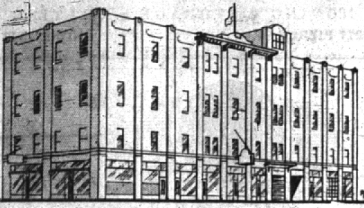


Modern business is something that makes you dizzy trying to follow it around. It is a rotor for the soul in which men are bred for the qualities of character. Happy is he who can stand the greatest heat.

SEVENTY-FIRST YEAR—NO. 8

BIRMINGHAM, OAKLAND COUNTY, MICHIGAN, THURSDAY, MAY 13, 1948

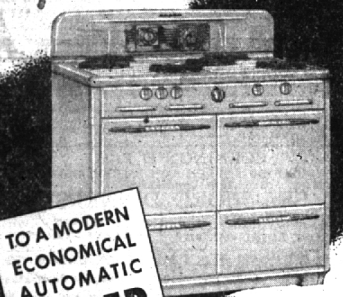
\$2.50 PER YEAR (In Oakland County)—SINGLE COPIES, 5c.



You Are Cordially Invited to Inspect
OUR MODERN STORAGE
Built Especially to Store Household Goods
LOCAL AND LONG DISTANCE MOVING
GAUKLER STORAGE CO.
9 Orchard Lake Ave., Pontiac, Mich.
Phone Birmingham 10240

Conserve Gas

SWITCH FROM THAT INEFFICIENT OLD FASHIONED GAS RANGE...



TO A MODERN ECONOMICAL AUTOMATIC **ROPER** GAS RANGE
NEW SIMMER BURNERS
SAVE GAS!...New Heavily Insulated Ovens Equipped with Oven Heat Regulators
SAVE GAS!

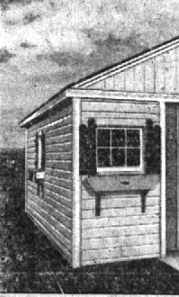
Yes, ladies, aside from the sparkling new beauty of this 1948 Roper Gas Range, you will be thrilled with its automatic features that save time, work and worry. You will also marvel at its many new economy features that save you money and help to conserve gas during this period when gas supplies are limited.

THIS BEAUTIFUL NEW ROPER — Lights WITHOUT MATCHES
Broils WITHOUT SMOKING — Cooks WHILE YOU'RE AWAY

CONSUMERS POWER COMPANY

GARAGES

by **MILLER**
• ANY STYLE
• ANY SIZE
• CUSTOM BUILT
WE DO CEMENT WORK
Excellent Material and Workmanship
IMMEDIATE DELIVERY
Phone—
A. L. CAVETTE, Birmingham 3335



Reckless Passing, Driving on Wrong Side of Road Cause Most Auto Deaths

By Dr. Walter A. Cutter
Administrative Assistant, Center for Safety Education New York University

(This is the third of a series of 10 articles on road and highway safety, written by nationally recognized accident prevention specialists and published by this newspaper in the interests of greater traffic safety.)

Latest available figures indicate that more than 10 per cent of the motorists involved in all fatal accidents were driving on the wrong side of the road. On rural highways, about 13 out of every 100 fatal accidents can be attributed to passing too fast, too soon, too late or with too little thought.

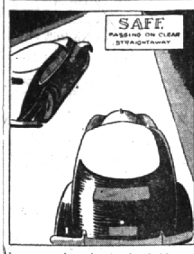
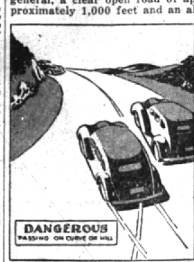
The inherent risk involved in passing is the unknown. Vertical curves, hills or a roadway may restrict vision and hide vehicles just beyond the area of vision; horizontal curves often conceal what lies ahead, and approaching vehicles frequently blend deceptively with the background.

Passing on the wrong side is often an accident cause. The safest practice, and generally the only lawful one, is to pass on the left. Multiple-lane express highways and street cars sometimes provide exceptions to this rule.

Misjudge Speed
Misjudging the speed of other cars is another cause of mishaps. About the only way the speed and distance of an oncoming vehicle can be judged is in the vicinity with which it passes such landmarks as telephone poles, billboards and buildings, and this comparatively accurate judgment can only be made when the car approaches from directly ahead.

There is always the danger that the passing driver may be forced to swing back to his original position in the line because oncoming traffic has made it unsafe to complete the pass. Many times the driver's original position on the highway has already been filled.

To guard against this, if the driver will ease his vehicle slightly over the center line at a safe distance to the rear of the vehicle



allowance time interval of 12 seconds is a safe margin.

Recommend Precautions
In addition, accident prevention authorities recommend these special precautions:

1. A standing street car or bus taking on or discharging passengers should never be passed on the right unless the landing area is protected by a safety zone.
2. Vehicles should not pass on approaching curves, crests of hills, railroad grade crossings or at any intersections.
3. Never attempt to pass vehicles that are traveling at top speed or at maximum safe speed, and never attempt to pass when the required passing speed is greater than that allowed by the local speed law.
4. Indicate well in advance the

WASHER TROUBLE?

Until you get that beautiful New Maytag, let us keep your present washer in as good working order as possible, no matter what its age.

We can quickly tell you what is required in the way of servicing or replacement of worn out parts. We are proud of our record for efficient, prompt service.

Telephone today for a service man to call and give you an accurate estimate of cost.

HAWTHORNE ELECTRIC

122 W. Maple
Phone 299-W

You're in Luck!



Your own home state of Michigan is one of America's greatest vacation lands. You can choose your spot today and be there tomorrow...enjoying your favorite sport. Write for helpful literature and make your reservations soon.

MICHIGAN TOURIST COUNCIL

ROOM 9
CAPITOL BLDG.
LANSING 1, MICHIGAN

Naval Aviators Note Anniversary

Marking the 37th birthday of Naval Aviation, 37 planes of the Naval Air Reserve roared over Birmingham on Saturday, May 8.

Each plane represented one year in the history of Naval Aviation. From a modest beginning on May 8, 37 years ago, when the Navy Department ordered two Curtiss "Triads," Naval aviation has developed through the years to its present day position—the spear-head of attack for the world's most powerful Navy. On another May 8, 1942, the Navy checked the forward advance of Japanese in the decisive two day battle of the Coral Sea.

The flight, consisting of fighters and torpedo bombers, was led by Reserve Lieutenant Commander Bill Felzer of St. Clair, Major Bill Carlton of Pontiac, and Reserve squadron commanding officer, led the formation of Marine Corsairs.

At the present, the Naval Air Reserve is conducting training at 23 Naval Air Stations located throughout the nation. It consists of 240 fighting, bombing, torpedo, transport, patrol and service squadrons plus 3 Marine fighting and ground control intercept squadrons. The program is presently training over 30,000 officers and men.

Swat Those Flies! Health Official Advises Residents

Get the fly swatter ready and start swatting Birmingham residents were advised this week by a Michigan Department of Public Health official.

"Every fly you kill right now means thousands less to endanger you and disturb you in August. Now is the time to take a fly-free summer," says LaRue Miller, environmental engineer of the Michigan Department of Health.

"A housefly beginning its reproductive activities now, in early spring, may have over five billion descendants by autumn if all its offspring live and reproduce. One pair of flies, mating now, will have become the ancestors, by late summer, of more flies than 1,000 men can swat in the same period," he explained.

Carry Filth
Flies transmit the germs of typhoid fever, poliomyelitis, dysentery, cholera, tuberculosis, cholera and certain other diseases.

For the most part flies are born in manure piles, cesspools, outdoor toilets and rotting garbage. They spread disease when they carry filth from these places to the food on the dining room table, food being prepared in your kitchen, or food stored in cupboards.

The first step in controlling the danger and nuisance of flies, he said, is to eliminate their breeding places. The manager, pile, rotting vegetable and animal matter, foul garbage cans and dumps, decaying human and animal excreta, refuse, cesspools and unclean chicken coops, pig pens and cow sheds.

Screen All Buildings
Another step is to adequately and tightly screen all buildings where food is stored and prepared or where humans live.

The first step in control is to spray inside and outside surfaces of buildings with a 3 per cent solution of DDT and paint screens with a 5 per cent solution of DDT once every six weeks. DDT is no more dangerous than the ordinary orchard spray materials. Do not eat it. Do not get it on food, and if you get it on you, wash it off.

Spray porches, the overhang of the roof, around the garbage can, all outside stables, pet houses, chicken coops, pig pens and the like.

"Then swat every fly you see," he concluded.

Rich or poor, young or old, there's something to be bought or sold—Eccentric Classified Ads.

WANTED! YOUR GRAND PIANO

I have apartment-size piano, charming spinet model, light mahogany, Marshall and Wendell. Excellent condition. Size 65" wide, 23" deep, 37" high. Deal for apartment or small living room, Phone TRinity 2-8250, Extension 3.

From where I sit... by Joe Marsh

Jeb Had the Folks in Stitches!

At the Friday Night Social, Jeb Crowell had the audience in stitches—doing a take-off on the blustering character who belittles everybody and everything that isn't from his own home town.

Well, we can laugh at that sort of character because from where I sit, Americans are just the opposite. We like to boast a bit perhaps, about the paint job on the new barn, or the missus' style of cooking—but we aren't intolerant of people who don't think or act exactly the same way we do.

Joe Marsh

J. A. FREDMAN
GENERAL CONTRACTOR
INDUSTRIAL and COMMERCIAL
Construction and Alterations
Grading • Excavating • Fill
IMMEDIATE SERVICE
COMPLETE INSURANCE COVERAGE
735 South Paddock St.
PHONE PONTIAC 2-5010 • 4-7162

MOVE WITH POTTER
And the ALLIED VAN LINES
POTTER MOVING AND STORAGE CO.
136 Brownell Phone B'ham 2112

"The Time to Buy Is More Important Than What to Buy"
Davis Hunter Scott & Co.
INVESTMENT SECURITIES
MEMBER
DETROIT STOCK EXCHANGE

Board Rooms Equipped with Trans-Lux Service
Private Wires to Principal Exchanges
Write for Our Investment Bulletin "The Pendulum"
SAVE MONEY!
Buy a Speedily-Erected
"Prefab-Bilt" BUILDING
\$18.63 PER MONTH for this 2-car garage with "over-the-top" doors, trussed roof for storing things overhead. Other sizes up to 6-car.
\$14.44 PER MONTH for car-and-a-half model which provides room for storage and a work bench.
\$17.51 PER MONTH for useful building which can be used as tourist cabin, small office, roadside store.
FIELD DETROIT CO.
2100 E. Maple — AT G.T.R.R.
OPEN DAILY — SUNDAY 2-5
VISIT OUR DISPLAY, OR PHONE BIRMINGHAM 2748 FOR OUR REPRESENTATIVE TO CALL

DRICONURE
All-Organic Fertilizer GIVES YOUR GARDEN A COMPLETE FEEDING OVER A LONG PERIOD
• Does Not Burn •
The Health Nurseries
Southfield Rd. Below 13 Mile
MYERS PUMPS
Famous for quality. Complete line for farm, home and commercial needs. Expert installation and service. Consult us on all pumping problems.
LEN PATTERSON & SON
28885 Telegraph Rd.
Phone Southfield 3521
GIVE YOUR HOME THAT NEW LOOK
Let us help you with your problems in paint styling.
Also, such well-known wallpaper as Imperial, Glencraft, Jean McClean, Birge, Warner and Schumacher.
PROMPT, COURTEOUS SERVICE BY INSURED WORKMEN
Bloomfield Decorating Service
591 Martin Street
Birmingham 5058