

WASHER TROUBLE?

Until you get that beautiful New Maytag, let us keep your present washer in as good working order as possible, no matter what its age.

We can quickly tell you what is required in the way of servicing or replacement of worn out parts. We are proud of our record for efficient, prompt service.

Telephone today for a service man to call and give you an accurate estimate of cost.

HAWTHORNE ELECTRIC

122 W. Maple
Phone 299-W

Chevrolet Singers to Be at Community House on March 31

Residents of Birmingham are invited to be the guests of the Charles Edwards Post, 14, American Legion, next Wednesday night. The Legion is sponsoring a concert by the Chevrolet Club, which will be given at the Community House at 8:30. This group of singers has appeared in Birmingham and vicinity in the past, and has become one of the best known male choruses available.

In addition to their talents, the program will feature the work of two young musicians, Miss Ann Meyer, popular young soprano from Pontiac, will appear, as will Miss Doris Yoder of Detroit, well known for her several violin concerts.

The program has been arranged to present as many types of music for the male chorus as possible, and will range from the stirring and rousing tunes of "Oklahoma" to the reverence and dignity of "The Battle Hymn of the Republic."

TIME is of the essence—time is valuable. To insure the best treatment for your advertisements or news, GET YOUR COPY IN EARLY.

Local Girl Given Staff Position at Purdue University

Jacqueline Buck, daughter of Mr. and Mrs. Charles E. Buck, 281 Townsend street, has been awarded a graduate assistantship



Jacqueline Buck

in biology at Purdue University. She will be graduated from Kalamazoo College in June and will begin her duties at Purdue in the fall. She will assist Dr. A. P. Tetrault, chairman of the biology department.

The assistantship includes a grant of \$1,200 a year, plus tuition and fees. Miss Buck has done undergraduate work under Miss Frances Delmott, head of the biology department at Kalamazoo. She was named to the "Who's Who among Students in American Colleges and Universities" publication.

During her four years at Kalamazoo she has been an officer in the Women's Recreational Association, a member of the Trobridge House Council, the Scholar's Group, Senate, governing body, College Players, Alpha Sigma Delta and the yearbook staff. Last year she served as assistant editor, and this year is editor of the "Boiling Pot."

She has majored in biology and has also acquired a chemistry major. Miss Buck is a graduate of Baldwin High School, where she was also very active in extra-curricular affairs of the school.

SOMETHING to sell? Then try Eccentric Want Ads.



By Gene Allaman

Governor Kim Sigler has a tough nut to crack: How can he successfully dislodge his personal ambitions from his new program of constitutional reform? It's not an easy task. The problem boils down to something like this:

Sigler is asking the legislature to submit amendments to Michigan voters next November. These amendments, if approved, would lengthen terms of the governor and other state officials from two to four years, would permit the governor to appoint the secretary of state and attorney general, would permit legislators to set salaries of their successors and elective state officials, and would permit the calling of a constitutional convention by a majority of the votes cast for such a convention call, not a majority of all voters who go to the polls.

Governor Sigler is convinced that these steps would make for better and more responsible government in Michigan. But a number of legislators are yet to be convinced. They link the reforms to personal ambitions of Sigler, a desire to get greater power for himself, not for his successor.

If Sigler is re-elected in November for a second term, the four-year term amendment would deprive him of one month of his second term. He would go out of office on December 1, 1950, instead of on January 1, 1951.

As Sigler sees it, the Dec. 1 inauguration date is evidence itself that he would deprive himself of one month and that this would benefit his successor, not himself. While he has not said he would retire at the end of a second term, he has plainly inferred it.

Furthermore, the governor has emphasized repeatedly that he does not look upon the governorship as a stepping stone to the United States Senate or other political public service. He would like to do something about better government, and he is not satisfied to hold the office of governor unless he strives to accomplish this.

In the governor's mind, the reform program should not be associated with Sigler's political future. But it is inevitable that some legislators will want to be

years. In the light of these facts, can anyone wonder why a well planned program of state government has not been carried out? "Does anyone seriously contend that a worth-while program can be accomplished in two years? . . . Governors are not in office long enough to lay out a program and see it through."

As for greater power for the governor, here is a quotation from Sigler's message to the legislature: "It is the governor to whom the people look for administrative accomplishment, and whom they blame for lack of it. The tools of administration, however, have not been provided to enable the chief executive of our state to fulfill this responsibility. . . . There should be authority commensurate with that responsibility."

Governor Sigler asks the legislature to create a state department of administration which would take over function of numerous state boards and agencies. The governor would appoint its director. This department would handle budgeting, purchasing and accounting. This department would give the governor, says Sigler, the means to get a job done, a "rich arm" with power to get results. It is a good illustration of what Kim Sigler wants.

An ash tray, recently invented, is described as providing a break for the non-smoker as well as the smoker. Electrically operated, it draws the ash—and the smoke—down into the stand.

What Your School Board Is Doing

Regular meeting of the Board of Education was held March 16, 1948, at 8:00 p.m. Closing of schools March 19, 1948, for County Institute approved.

Appointment of Nancy Bell, clerk and Wesley Staebler, custodian, approved. Resignation of Mrs. Shattuck, custodian, accepted. Payment of \$567.45 to J. L. Hudson Company from Deferred Maintenance & Capital Outlay Fund approved. Transfer of \$500.00 to the Cafeteria Fund approved. Purchase of Torrid Oil Burner

from Franklin at an approximate cost of \$400.00 approved. Accounts Payable, payrolls and transfer of funds to other accounts in the amount of \$81,514.59 approved. New purchases in the amount of \$1280.94 authorized.

SPRAYING

ORCHARDS, SHADE TREES AND SHRUBS

We also Spray Lawns for Dandelions and Weeds Control

MICHAEL J. JASSO

Phone No. 3300, 147 E. No. 4, Birmingham

Fox and Hounds Inn

John Ingleson, proprietor

Woodward at Long Lake Road, Bloomfield Hills

SERVING DINNERS

Sundays

from 1:30 p.m. until 9 p.m.

Week days from 5:30 until 11:00 p.m. except Mondays when the dining room is closed.

COCKTAILS SELECTED FOODS

Phone B'ham 3290 for Reservations

BEHIND THE '8' BALL AGAIN? WHEN WILL YOU LEARN THAT CONSULTING THE YELLOW PAGES OF THE TELEPHONE DIRECTORY IS THE RIGHT WAY TO SELECT YOUR NEEDS



There's only so much S-T-R-E-T-C-H



in our GAS DOLLAR

The dollars you pay us for gas service have been stretched to the limit, but there isn't enough stretch in them to cover present-day high costs.

You know how your cost of living has risen. Well, ours has gone up, too. In order to supply you with dependable natural gas service we must buy certain things—natural gas, equipment, materials, the services of our employees—and the cost of each of these items has taken a big jump.

Michigan natural gas is no longer available in large quantities, and so we must buy gas from Texas, Oklahoma and Kansas that has been piped 1,200 miles to Michigan. Much of it must be held in storage for weeks or months before it is used.

Wages are up, construction costs are up, everything is up—except the price of gas to our customers, which remains at the old low level.

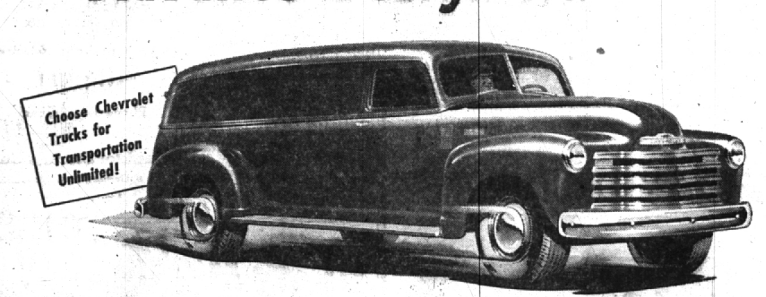
That's why we have had to stretch and stretch our gas dollars until no more stretch is left.

No need to tell you that this situation means problems for us. Everyone knows that unless costs and selling prices are kept in proper balance, trouble will follow. But that's how things are today: Costs are up, rates unchanged, and a big building program needed to care for the gas needs of Michigan homes, stores and industries.

Do you wonder that we're doing a lot of thinking these days?

CHEVROLET

Advance-Design Trucks



LOWEST IN PRICE

Only Chevrolet Advance-Design trucks have these new and finer features!

NEW CHEVROLET 4-SPEED SYNCHRO-MESH TRUCK TRANSMISSION in heavy-duty models that assures new operating ease and efficiency.

NEW STEERING COLUMN GEARSHIFT CONTROL in models with 3-speed transmissions provides greater driving ease and convenience.

NEW FOOT-OPERATED PARKING BRAKE providing clear floor area, safety and efficiency in models with 3-speed transmissions.

CHEVROLET and ONLY Chevrolet IS FIRST!

SPUN REAR-AXLE SHAFT ATTACHMENT TO WHEEL HUB of greater strength and durability in heavy duty models.

NEW IMPROVED VALVE-IN-HEAD ENGINE has greater durability and operating efficiency.

THE CAB THAT "BREATHES"—Fresh air—hauled in cold weather—is drawn in and used air forced out.

Plus • Unweld, all-steel cab construction • New, heavier springs • Full-floating hypoid rear axles • Specially designed brakes • Ball-bearing steering • Wide base wheels • and many others!

CHEVROLET Among all truck producers, only Chevrolet

brings you Advance-Design with the latest and greatest features of advance engineering, plus this matchless premium of production and sales leadership—the lowest prices in the volume field! Here are trucks with comparable equipment and specifications that list for less than competitive makes—some models as much as \$150! See these trucks now in our showroom.

*Truck air heating and ventilating system optional at extra cost.

THE NORTH CHEVROLET COMPANY
1000 So. Woodward Ave. Phone 3202

CONSUMERS POWER COMPANY