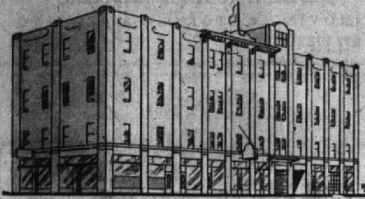


There is within most of us an inclination to find fault; most of the things we find fault with are made larger because of our own critical attitude toward the thing or person we criticize.

SEVENTY-FIRST YEAR—NO. 11

BIRMINGHAM, OAKLAND COUNTY, MICHIGAN, THURSDAY, JUNE 3, 1948

\$2.50 PER YEAR (In Oakland County)—SINGLE COPIES, 5c



Local Art Student Will Present Work at Chicago Exhibit

Commemorating the 47th Anniversary of its founding, the Chicago Academy of Fine Arts, 18 South Michigan Avenue, will stage the 47th annual exhibit and Fashion Parade at the school June 3-6, according to Mrs. Ruth Van Sickle Ford, president and director of the Academy.

More than 1,000 students from all parts of the United States, Canada; Brazil; Baghdad, Iraq; and Tarlac, Philippines, will show their work in dress design, interior decorating and industrial design.

Charlotte M. Mill, 935 Gordon Court, Birmingham, a student at the Academy, will present her work during the four-day show at the school.

SOMETHING to sell? Then try Eccentric Want Ads.

Life Insurance Counselor
Harry O. Smart
176 N. Woodward Room 205
PHONE 484

You Are Cordially Invited to Inspect
OUR MODERN STORAGE
Built Especially to Store Household Goods

LOCAL AND LONG DISTANCE MOVING

GAUKLER STORAGE CO.

9 Orchard Lake Ave., Pontiac, Mich.
Phone Birmingham 10240

Drivers' Disregard for Traffic Signals Increases Staggering Yearly Death Toll

By J. Anthony Carrothers
Traffic Engineer
National Conservation Bureau

(This is the sixth of a series of 10 articles on streets and highway safety, written by nationally recognized accident prevention specialists and published by The Eccentric in the interests of greater traffic safety.)

Only a feeble criminal is likely to be reckless enough to disregard a highway patrolman's howling siren or a traffic policeman's whistle. Yet an appalling large number of otherwise law-abiding motorists habitually drive through red lights, exceed posted speed limits and disobey other traffic control devices whenever they think they can get away with it.

About 24 per cent of all fatal accidents happen at intersections, another 12 per cent on city streets. More than half of the drivers killed in grade-crossing accidents last year were disregarding warning signs and signals placed there to protect them.

The functions of traffic control devices are identical with those of enforcement officers—to regulate warn and guide traffic—except that they cannot make arrests. Control devices can be very effective in reducing accidents, provided they are properly placed, properly designed—and properly obeyed.

Regulatory Devices
Traffic control devices which regulate traffic are the strongest aids of authorities in their efforts to reduce accidents and increase the safety and convenience of drivers and pedestrians alike. The stop sign, the traffic light, the parking sign, the "no turn" sign and the speed limit sign are all regulatory devices. Violators of the directions given by these devices are punishable by fine in traffic court; they may also be punished far more terribly by injury or death.

Devices that warn motorists are designed to call attention to a special hazard or condition where extra caution and alertness is necessary. Devices that issue a warning function include the flashing yellow traffic light, the curve sign, the crosswalk sign, the painted center line of no-passing zones, and pavement messages in advance of points of hazard.

Devices that guide motorists include "destination" signs for motorists traveling between cities, signs giving specific directions for vehicles in complex intersections, and lane and turn-control pavement markings.

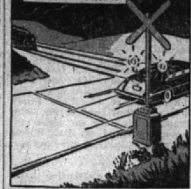
Considerable Progress Made
It is important that traffic control devices conform to nationally recognized standards so that they can be understood at a glance by motorists and pedestrians. Considerable progress has been made in this during the past 10 years. The recommended shape, color

and size for the various types of signs are:

Regulatory signs, white vertical rectangle with black lettering.

Warning signs, diamond-shaped, yellow with black lettering.

Stippled out for special treatment are "stop" signs and railroad advance warning signs. Both are yellow with black lettering.



but the stop sign is six-sided, and the railroad warning sign is round.

Guide and information signs, horizontal rectangles with white background and black lettering.

Obviously it is important to have enough signs, signals and markers strategically placed at the needed spots. Every citizen can help by seeing that the traffic authorities are given adequate budgets to install and maintain proper systems of traffic control devices.

Our street systems of the future will all have separate intersections, smoothly curved highways and depressed parkways which will make many of our present-day traffic controls unnecessary. Some of us may live to see that day. Certainly more of us will if, in the meantime—we motorists and pedestrians—we treat each sign and signal with as much respect as though it were the law itself. Because it is!

LIFE Photo Exhibit Is Being Shown at School in Hills

City and Country School of Bloomfield Hills has arranged to show "Age of Exploration," a photographic exhibition prepared by the editors of Life Magazine. The exhibit began Tuesday and will continue through June 15.

"Age of Exploration" deals with the great period of discovery, from 1400 to 1650, when the physical world was expanding from a flat medieval island to the great white expanses of the Renaissance.

In 16th Century Europe the world of Ptolemy still dominated the minds of most men. They had heard of the fabulous East, but they knew little of the ways to get there. "Age of Exploration" describes the adventures of men daring enough to brave unknown terrors to find new ways to the East.

There are 24 panels and some fifty pictures including, in addition to photographs, reproductions of 15th and 16th Century engravings, woodcuts, drawings, and paintings. Included also is the reproduction of a rare map, the chart of the new world made in 1500 by Juan de la Cosa who was an officer of Columbus' second voyage. Many unusual pictures come from the little known Voyages of De Bry and of Lincolnton, as well as from Travels of Hans Staden and Thevet's Cosmographie Universelle.

Opportunity For A Young Man
A young man who is educated, ambitious, and has a few years of business training, and is willing to accept an opportunity about earnings will be added to our sales representatives on a monthly basis in full giving local references and telephone number. Box 354, Eccentric.

SPRAYING ORCHARDS, SHADE TREES AND SHRUBS
We also spray Lawns for Dandelions and Weed Control
MICHAEL J. JASSO
Phone Big Beaver 147
R. No. 4, Birmingham

RUST-OLEUM
STOPS RUST AND PREVENTS FURTHER RUSTING... MANY COLORS & ALUMINUM
Ask For Folders
The Heath Nurseries
Southfield Rd. Below 13 Mile

J. A. FREDMAN
GENERAL CONTRACTOR

INDUSTRIAL and COMMERCIAL

Construction and Alterations
Grading • Excavating • Fill

IMMEDIATE SERVICE
COMPLETE INSURANCE COVERAGE

735 South Paddock St.
PHONE PONTIAC 2-5010 - 4-7162

RE-ROOF-NOW

PAY LATER NO MONEY DOWN

Roofing - Siding
Shingle Staining

PHONE BIRMINGHAM 2080

W. P. Hickman Company
1360 EAST MAPLE ROAD - BIRMINGHAM

"The Time to Buy Is More Important Than What to Buy"

Davis Hunter Scott & Co.

INVESTMENT SECURITIES

MEMBER
DETROIT STOCK EXCHANGE

Main Office: 610 Penobscot Bldg., Birmingham, Mich. Tel: Birmingham 5091

Branch Office: 610 Penobscot Bldg., Detroit, Mich. Tel: Cherry 2490

—STOCKS AND BONDS—

Board Rooms Equipped with Trans-Lux Service
Private Wires to Principal Exchanges
Write for Our Investment Bulletin "The Pendulum"

GARAGES

by **MILLER**

- ANY STYLE
- ANY SIZE
- CUSTOM BUILT

WE DO CEMENT WORK

Excellent Material and Workmanship
IMMEDIATE DELIVERY

Phone—

A. L. CAVETTE, Birmingham 3335

IS YOUR REFRIGERATOR LARGE ENOUGH?

USE THESE DIMENSIONS TO SEE HOW YOU CAN BENEFIT	6 cu. ft.	OUTSIDE DIMENSIONS		
		Width	Height	Depth
	27 1/2"	51 1/2"	26 3/4"	
	7.7 cu. ft.	31 1/2"	57"	27 1/2"
	9.3 cu. ft.	33 1/2"	62 1/2"	27 1/2"
	11.5 cu. ft.	34 1/2"	65 1/4"	28 1/2"

Frigidaire "Compact-9"

Holds more food than ever before in the same kitchen space

- MORE usable space on the new flat top, MORE frozen food storage in the big new Super-Freezer, MORE room for keeping fresh or frozen meats, MORE space for leafy vegetables and fruits, MORE usable shelf space for other foods.

WITH ALL THESE and many other features

- Famous Mator-Misor mechanism
- Exclusive Quick-Cook Trays
- All- porcelain inside
- Large Super-Freezer
- Multi-purpose Storage Tray
- Full-width roller-bearing, glass-topped Hydrator

More Frigidaires serve in more American homes than any other refrigerator

Model illustrated is Frigidaire M1-9

\$256.25

OTHER COMPACT MODELS - - -

6 cu. ft. \$185.00 7.7 cu. ft. \$218.25 11.5 cu. ft. \$284.75

Children's Day at Kirk in the Hills Planned for June 6

On Sunday, June 6, at 4:00 p.m. Kirk-in-the-Hills will hold its Children's Day service. Two gowned youth choirs will present several special numbers. Recitations will be given by members of the four departments and a number of older young people will assist in the various phases of the worship service.

Certificates and awards will be distributed at this time.

A meeting of the Session in the church study will be held at 7:30 p.m. Wednesday, June 3.

The first session of the vacation Bible school will be held on Wednesday, June 16 at 9:30 a.m. The facilities of the school are open to all boys and girls seven years and older. Classes in Bible study, crafts, music, recreation, visual education and worship are scheduled. An afternoon trip is planned for each Friday.

WASHER TROUBLE?

Until you get that beautiful New Maytag, let us keep your present washer in as good working order as possible, no matter what its age.

We can quickly tell you what is required in the way of servicing or replacement of worn out parts. We are proud of our record for efficient, prompt service.

Telephone today for a service man to call and give you an accurate estimate of cost.

HAWTHORNE ELECTRIC
122 W. Maple
Phone 299-W

GARAGES

FRAME—BLOCK—BRICK
CEMENT WORK

All Types See Us Before You Build

G. & A. Const. Co.

G. Zaaluago A. Bazzani
17831 W. 7 Mile at Southfield
KE 2-3900 VE 7-6976

DANDELION AND WEED CONTROL

WITH 2-4 D FOR BEAUTIFUL LAWNS

EMIL G. OLIN
LANDSCAPE FORESTER
607 Southfield Rd. Phone B'ham 1051

MOSQUITO AND INSECT CONTROL

WITH D.D.T. FOR YARD PARTIES

MOVE WITH POTTER
And the ALLIED VAN LINES

POTTER MOVING AND STORAGE CO.
136 Brownell Phone B'ham 2112

SAVE MONEY!
Buy a Speedily-Erected

"Prefab-Bilt" BUILDING

"Prefab-Bilt" buildings are delivered on your lot complete in panels for quick erection by handymen, or we will erect them for you. The cost is low, the quality is high. Wide choice of styles and sizes. Phone us TODAY for complete information.

\$18.63 PER MONTH
for this 2-car garage with "over-the-top" doors, trussed roof for storing things overhead. Other sizes up to 6-car.

Low Monthly PAYMENTS
for easily-erected storage warehouse, small barn, machine shop. Many sizes available.

\$14.44 PER MONTH
for car-and-a-half model which provides room for storage and a work bench.

\$17.51 PER MONTH
for useful building which can be used as tourist cabin, small office, roadside store.

FIELD DETROIT CO.
2100 E. Maple—AT G.T.R.R.
OPEN DAILY - SUNDAY 2-5
VISIT OUR DISPLAY, OR PHONE BIRMINGHAM 2748 FOR OUR REPRESENTATIVE TO CALL

CRAIG APPLIANCES, Inc.
BIRMINGHAM'S EXCLUSIVE FRIGIDAIRE DEALER
112 So. Woodward Phone 4822