

Obituary

David Duncan Green
Mr. David D. Green of Point

Comfort, Okosh, Wis., died at the home of his daughter, Mrs. Harry E. Markey, 17869 Buckingham boulevard, Southfield township, on June 12.
He was born in Waterford, Ontario, June 18, 1861.
Surviving him are his wife

Emma Hemman, Green; two daughters, Mrs. Markey and Mrs. J. A. Maurer of Saginaw; two grandchildren and five great grandchildren.
Funeral services will be held Tuesday in the Ritter Funeral Home, Milwaukee, with burial at Valhalla Cemetery, Milwaukee.

Without Your Argus on Vacation you'll MISS THE BOAT



SHAIN'S DRUG STORE

has an ideal Argus Camera for every vacation shot!

COME IN FOR YOUR ARGUS vacation camera today! It's ready for you now. Then you'll be sure of vivid vacation pictures on every roll of film you take. Your Argus camera will give you all the fine, contrasting black and whites—and the rich color transparencies that make permanent the best moments of your vacation. You can double your vacation fun when you take your Argus camera along.
High speed we have a full selection of Argus cameras and top-flight photo accessories for your vacation. Drop in tonight or tomorrow, sure!

ARGUS MINICA—Precision ground F8.7 double lens. Three bare-socket auto-exposed, 240, accurate shutter, 1/750 of a second. Metal top plate. Takes 35 mm. film. PRICE: \$29.95. Includes Excise Tax

ARGUS A-2—Complete, color corrected lens, 245. Anastigmat lens. Shutter with speeds from 1/25 to 1/1250. Electronic type exposure meter. Optical viewfinder. Takes 35 mm. film. Carrying case. PRICE: \$37.95. Includes Excise Tax and Case

ARGOLEX MODEL 2
Argolex shows you the picture before you take it. Has F4.5 Anastigmat lens. Speeds 1/125 to 1/2000. 12 exposures (3 1/2 x 2 1/4) on 620 roll. Case. PRICE: \$49.43. Includes Excise Tax and Case

ARGUS C-3—Color-corrected, coated Anastigmat lens, F2.8. Range finder. Speeds 1/125 to 1/500. Flash. Case. PRICE: \$24.71. Includes Excise Tax and Case

ARGUS MODEL 21 with "Markfinder"—New Markfinder sight centers your view. A 45 degree F.8.5. Anastigmat lens, coated, color-corrected. Speeds 1/125 to 1/500. 35 mm. film. Case. PRICE: \$58.00. Includes Excise Tax and Case

Take Me Out to the Bowl Game



With an eye to greater attendance, President Bill Veeck got the Cleveland Indians placed baby-sitting and nursery facilities at the disposal of parents attending ball games. Well-stocked with toys and recreational equipment for children from 2 to 6, the room in the Cleveland Stadium will be open for all day during the summer. Veeck estimates 2-year-old Michael Varr, who would rather see the game than play with toys.

During the war, 1,384 combat types and 1,000 non-combat types of Naval ships were used, a total of 8,234. These do not include 60,000 small boats, minor landing and district craft. These ships steamed a total of 420,000,000 miles.

Big Car AUTO RACES
Milford Speedway, Milford, Mich.
SUNDAY AFTERNOON JUNE 30
- 7 EVENTS -
Qualifying 12 Noon—
First Race 2:30
General Admission \$1.00 plus tax
Grandstand 50c plus tax

Schedule

(Continued from Page One)
It will be possible every day at Springdale Park. Tennis, golf, and shuffleboard are among the recreational pastimes offered there. There is an ample supply of fireplaces and stoves, a refreshment stand and many shady tables. Families and organizations are welcome to use the park facilities at any time. For local residents and taxpayers there are special rates for the season on the golf links.
Honor awards in the form of championship certificates are given to the children for leadership, service, sportsmanship and participation in the summer program at the various playgrounds.
In addition to the regularly scheduled events, about 40 special events are planned for the summer. The only requirement is that participants report to the scene of these events on time. In addition to the following are planned, but full details cannot be announced at this time: special golfing events, the Soap Box Derby and special baseball and softball games.
Summer Schedule
Other events offered for the season are:
June 21—Season opens
June 21—Games and handicraft
June 22—Box hockey
June 23—Doll making starts
June 24—Checkers
June 25—Parachute making
June 28—Kite construction
June 29—Hoop jumping
June 30—Pony hike
July 1—Roller skating
July 2—Deck tennis
July 6—Ping pong
July 7—Bubble gum contest
July 9—Shuffleboard
July 12—Indian Village
July 13—Marbles
July 14—Boll display
July 15—Kite flying day
July 16—Croquet
July 18—Still walking
July 19—Jacks
July 20—Tether ball
July 21—Treasure hunt
July 26—Hopscotch
July 27—Horseshoes
July 29—Bicycling day
July 30—Bicycle hike
Aug. 2—Craft display
Aug. 3—Cris swim night
Aug. 5—Boys swim night
Aug. 6—Football
Aug. 8—Flat throwing
Aug. 10—Picnic day
Aug. 12—Water carnival
Aug. 13—Season ends

Oiling

(Continued from Page One)
ward; Davis, Grant to Woodward; Cummings, Bird to Chanin; Bird, Woodward to Edgewood; Buckingham, St. Andrews to Eton; Dorchester, St. Andrews to Eton; Yorkshire, St. Andrews to Eton; Edensborough, Buckingham to Dorchester. On the same evening the commission will review the possibility of an assessment project for curb and gutter on that portion of Edensborough.
Water Main Project
Commissioners sent to the engineering department a request for detailed plans on the permanent improvement of Northlawn and Southlawn, between Stanley and Pierce.
Also on July 12 the city commission will hear arguments concerning the confirmation of an assessment roll in order to construct a 15-inch water main along Hunter from Lincoln to the 500-600-gallon storage tank.
June 28 is the date of the confirmation of the roll on the street pavings in the Birmingham Highlands subdivision.

The Birmingham Eccentric
Published every Thursday, at Birmingham, Mich., in the Birmingham Building, 220-222 North Woodward Avenue.
Entered as Second Class Matter in the U. S. Post Office at Birmingham, Michigan, under the act of March 3, 1879.
Subscription Rates
(in Oakland County)
One Year \$2.00
Six Months 1.25
Three Months .75
(Outside Oakland County)
One Year \$2.50
Six Months 1.50
Three Months .90
The Eccentric is a member of National Association and University Press Club.

Address

(Continued from Page One)
cut it. It was the main strand which suspended his web from the tree above. With that one cut, his house collapsed about him, and he fell, entranced in its meshes, to perian.
"Any person is lost and forfeits the greatest happiness of life when he becomes independent, self-satisfied and undisciplined in the light of God's promise."
Dr. Harris closed his address by a quotation from Shakespeare, the speech is that of a man, rich in experience, talking to a youth about to go out into the world alone, in it the main warns the youth of the pitfalls he must encounter. He warned him of the so-called friends he might make, and of the true friends which might be his fortune.
Be True to Self.
He showed his his responsibility to them, to himself, to his God, and ended his address with "This above all: to thine own self be true, and it must follow, as the night the day, thou canst not then be false to any man."
"Farewell, my blessing season this in thee!"
The service was held in the auditorium of Baldwin High School, with a large attendance of parents and friends of these members. The invocation and benediction were pronounced by Rev. Emil Kötter, pastor of the First Baptist Church.
Mildred J. Ritter presided at the organ and accompanied the members of the Baldwin High School Choir in several selections.

Time For Praise

"Oh, Mrs. Brown," gushed the visiting Mrs. Tucker, "your husband must love you very dearly. I sat across the aisle from him on the suburban express last Thursday afternoon and heard him praising you to a woman who was sitting next to him. Oh, my dear, you should have heard the perfectly wonderful things he said about you!"
Mrs. Brown laughed delightedly. "Well," she finally replied, "John is a fairly devoted husband, and he does sometimes say nice things about me. But I think he was exaggerating a little when you heard him. You see, he was bringing out the new cook, and when you heard him he was giving me a build-up."

ANNOUNCING...

Opening of a new shoe repair shop for your convenience.

PROMPT, COURTEOUS SERVICE

DELUXE SHOE SERVICE

HOWARD DAMICO, PROP.
152 SO. WOODWARD
(Basement of Liquor Store)

Every Day is FATHER'S DAY AT Firestone

IT'S EASY TO PAY THE BUDGET WAY AT Firestone

GET READY FOR SAFE HOLIDAY DRIVING

Give Him a Remington Threesome **ELECTRIC SHAVER**

\$17.50

Buy this shaver on a 10-day trial basis. If at the end of that time it has not proven itself to your complete satisfaction, your money will be refunded in full.

Hull Auto **COMPASS**

\$3.49

ILLUMINATED \$5.49

Twelve-Foot Cord **TRAVELITE**

\$1.49

Plugs into cigar lighter sockets. Always ready if trouble occurs.

Pulls in the Whoppers! **CASTING REEL**

\$5.25

A level wind reel of top quality. Extra strong and sturdy.

Only **Firestone DELUXE CHAMPIONS** are Safe-Sured Against the Dangers of Skidding

Low as **125** a Week

Up to 60% more non-skid angles for greater protection on slippery streets. Up to 55% stronger for extra protection against blowouts. And the amazing new Firestone Luxe Cleadition gives up to 35% longer mileage.

LIBERAL TRADE-IN ALLOWANCE

FREE INSTALLATION! **Firestone SEAT COVERS**

\$7.45 up Coupes

Beautiful cloth and fiber covers, precision tailored for perfect fit. See them today.

Firestone Alternate-Firing 7 1/2 H. P. TWIN OUTBOARD MOTOR

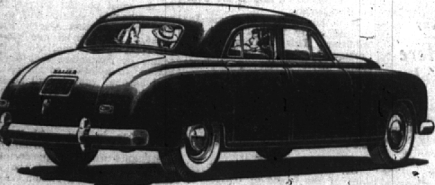
6 MONTHS TO PAY 169.95

Big and Fast! Top speed up to 20 M.P.H. ... Yet it can be idled down to slowest trolling speeds. Years of trouble-free service.

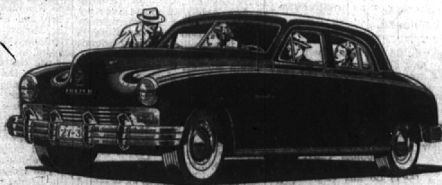
KAISER-FRAZER BUILDS ITS QUARTER-MILLIONTH CAR

Shattering All Records with the Most-Copied Cars in America!

250,000 CARS IN TWO YEARS!



FROM 7 CARS IN JUNE '46 ... TO 21,000 CARS TO BE BUILT IN JUNE '48!



KAISER

Service... Wherever You Go!

FRAZER... still the newest cars on the road!
MAPLE SALES & SERVICE 314 East Maple

Eternal's AUTO SUPPLY PHONE 9
408 S. WOODWARD AT DAINES