

An electrical manufacturing career as a door-to-door sales company reports that one of his men, offering "No Peddlers Allowed" signs.

HAVE YOU BEEN WAITING TO BUY TELEVISION?

- WHY? Although somewhat new in this area, several television stations have been operating on the East and West coasts.
- WHY? Two more T.V. stations will be operating in Detroit early this fall.
- WHY? This area will be served by the NBC television network on or before Oct. 15.
- WHY? Color television is still years off.
- WHY? Prices of television sets will not come down until wages and prices in general have dropped.
- WHY? We have a few demonstrators which we are offering at greatly reduced prices. This is your chance to get the best in television for less.
- WHY? We have a complete television service and installation department, not just a sales organization.

McCallum & Dean

Phone 4060 Electronic and Suppression Eng.
409 E. Maple Ave.

BRIDGE AT THE COMMUNITY HOUSE

By James C. Gray
(A report on the duplicate bridge tournament held every Wednesday evening at 7:30 o'clock. You and your partner are cordially invited to participate!)

(How Jim Gray, who writes this column weekly, managed to break away from a bridge table at the Community House to get up around Traverse City and the cherry-growing country, we don't pretend to know. Anyway, he did. And he has let himself "go" on the beauties of cherry pie and the northern Michigan landscape, as you can see in his article this week. He may even have promised some Chamber even have promised some Chamber to send back an account of his impressions in that part of the country. We'll find out when he gets back.—The Editor)

This column has nothing to do with bridge. If you wish to know the result of the June 30 tourna-

ment, skip down to the end where a pinch hitter has tackled them on. Because this is about: 1) cherry pie; 2) the rolling hills along the eastern shore of Lake Michigan; 3) the fragrance of pine needles; and 4) the blue waters of Traverse Bay.

Fellow bridge players, which of us has not said at one time or another, "I'd rather play bridge than eat!" At the time we meant it—and who is to deny that it is a very sound observation.

But we did not mean it positively—absolutely because we were forgetting "cherry pie". Now, by cherry pie I do not refer to that doughy, cornstarchy mess filled with preserved cherries which passes for cherry pie in many circles. I mean the kind that has a flaky brown crust with parallel slits in the top to let the cherry juice ooze up and through and run over the side in little reddish rivulets of succulence.

It is filled with tree-ripened fresh cherries, not tart, not sweet—just right. It is served preferably topped with a large globule of "cream" ice cream, slightly on the "melty" side. As I write, just such a masterpiece is on the table before me. Wish you were here. You are driving straight west

BLACKTOP ALONE IS NOT ENOUGH

Let us Repair and Seal Your Blacktop Drive



S. F. Taylor Construction Co.
6535 Third Ave., Detroit 2, Mich. Ph. Madison 3585

Padded Fish Story



Four-year-old Teddy Hume, of Mayaguez, Puerto Rico, drops a line in his favorite fishing hole from one of the huge water lily pads growing at a nearby U. S. agricultural station. This pad is 53 inches in diameter and will not only support Teddy, but anything he catches—if they're not whoppers like the lily pads.

toward the setting sun, and just beyond the little settlement of Kingsley, Michigan, suddenly a mixture of Connecticut and western Massachusetts—the gently rolling hills of Connecticut; the pine-topped knolls and hidden green valleys of Massachusetts's Berkshires.

Lake Michigan is just a few miles ahead of you. You know it regardless of the map because the air is fresher somehow, and you take deep breaths to sample its flavor. It is not "sea air"—there

is no salty tinge—it is "lake air", clear and clean as a sand dune, with overtones of pine needle fragrance.

As you cross each range of hills you wait expectantly: Surely, now—just over this one is the lake. No. Now. No. And the road turns north disappointingly. The country levels slightly. Farms, farm buildings appear. Then, the orchards.

Then, you start up a long rising curve to the left. At the top you sweep around a grove of cherry trees crowding the highway and come out "on top of the world"—and it is there spread out in front of you—the bay.

You stop at the side of the road and just look. To your left a green peninsula stretches away north as far as you can see. To your right the main land curves around the eastern shore in a series of sandy bluffs. A gentle surf laps the beaches. And ahead of you, ending in nowhere, is the blue translucent water of the bay. Grand slam, re-doubled, vulnerable.

The winners of the June 30 tournament are Mr. and Mrs. Charles F. Richards, Mr. and Mrs. John Kraus, and Edwin V. Clarke and W. W. Anderson.

SPECIAL SERVICE FEATURES for JULY

VACATION TUNE-UP

New points, condenser and spark plugs. All genuine parts and labor.

6 Cyl. 8 Cyl.
\$9.00 \$11.00



We Do Undercoating Get Our Price & Save

FAST AND COMPLETE SERVICE ON HUDSON DOUBLE-SAFE BRAKES

Brakes Carefully Inspected & Adjusted \$1.49

Brakes Relined by Hudson trained men who know the exclusive Hudson brake system. Special Price—Labor & Lining \$18.95

Radiator Flushed—Hose Tightened Hudson quick acting cooling system cleaner and neutralizer. Special price, including materials \$2.75

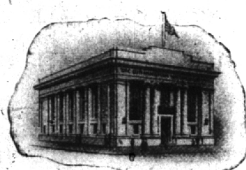
ENGINE TUNE-UP & VALVE GRIND

6-Cylinder \$14.60 8-Cylinder \$18.50

GENUINE HUDSON PARTS EXTRA
We Carry a Complete Line of Genuine Hudson Parts and Accessories
CLOHSET & McCUTCHEON
THE HOME OF HUDSON
820 S. Woodward Phone 4400
FREE PICKUP & DELIVERY SERVICE

Statement of Condition

at the Close of Business
June 30, 1948



Directors

- MERRILL C. ADAMS
- GEORGE R. AVERILL
- ROBERT A. EMMETT
- HERBERT H. GARDNER
- CHARLES E. LEWIS
- JOHN E. MARTIN
- ERNEST W. SEAHOLM
- A. C. WERMUTH
- RALPH A. WILSON

RESOURCES	
Cash on Hand and in Banks	\$ 2,035,080.40
United States Government Obligations:	
Direct and Guaranteed	3,397,079.38
State, County and Municipal Bonds	2,398,198.09
Other Bonds and Securities	549,965.85
Federal Reserve Bank Stock	15,000.00
Loans and Discounts	1,613,470.78
Real Estate Mortgages	2,869,079.56
Banking House	175,409.01
Furniture and Fixtures	53,720.97
Prepaid Expense	6,282.00
Accrued Interest on Bonds Purchased	1,503.68
Other Assets	1,768.81
Total Resources	\$13,116,558.53
LIABILITIES	
Capital—Common Capital Stock	\$ 250,000.00
Surplus Fund	250,000.00
Undivided Profits	105,000.00
Reserve for Taxes and Dividends	25,500.00
Reserves for Contingencies	54,353.07
Interest Collected But Not Earned	10,010.11
Other Liabilities	None
Deposits:	
Public Fund Deposits	\$ 1,021,026.80
U. S. Government Deposits	205,333.21
State of Michigan	75,000.00
Other Deposits	11,120,335.34
Total Deposits	12,421,695.35
Total Liabilities	\$13,116,558.53

*United States Government Securities of a Par Value of \$400,000.00, Carried in the Foregoing Statement, Are Pledged to Secure Deposits Where Required by Law.

The Birmingham National Bank

"Birmingham's Community Bank"
MEMBER FEDERAL RESERVE SYSTEM
MEMBER FEDERAL DEPOSIT INSURANCE CORPORATION



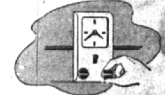
It's Vacation Time...

CARRY YOUR KITCHEN WITH YOU!

An Electric Roaster Oven Cooks Everything... Plugs in Anywhere
Wonderful in town... perfect in country! The new electric roaster-oven cooks a complete meal for from three to six, bakes a pie or cake—roasts a 20-pound turkey, can even be used for canning fruit. Take it with you anywhere—it will broil, toast, grill or fry to perfection wherever there's A-C current. You'll find portable electric roaster-ovens in your favorite appliance store now—see your dealer today!

ROUGH IT... IN STYLE!

Practical, versatile, foolproof, these family-size roaster-ovens come equipped with accurate thermostats and automatic timers. Ideal for touring!



USE IT ALL YEAR ROUND!

Summer or winter, it's perfect for keeping food warm. Use one for backyard picnics—as an auxiliary oven in the kitchen—or for hot dishes at buffet meals.

LIKE HAVING A PART-TIME COOK!

Weighing only about 20 pounds, constructed of durable steel, aluminum and enamel, your roaster is easily carried, easily cleaned. Priced from \$36.95.

SEE THEM AT YOUR NEIGHBORHOOD EDISON OFFICE

The DETROIT EDISON Co.