

# MORE - MORE - MORE -

For Your Money - With A & P's New Size

## MARVEL BREAD

Baked by A & P's Master Bakers

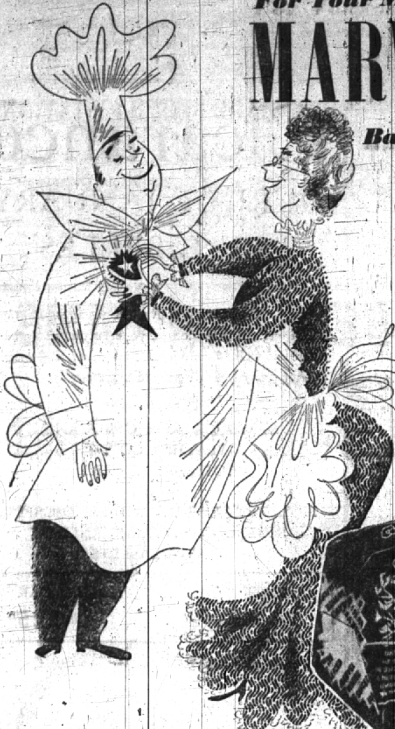
FULL POUND LOAF

only **13c**

Housewives you'll want to pin a medal on A&P's Master-Bakers who created this new Full-Pound Loaf of Marvel Bread. You'll agree that it's bread at its best! Every loaf is "Dated-Fresh" daily, rushed to your nearby A&P, to arrive at your table with all its fine oven-fresh flavor. Treat your family to Marvel's delicious golden-goodness today!

DATED "FRESH DAILY"

Remember, When Freshness Fades, Flavor Fades



### A&P "SUPER-RIGHT" MEATS SAVE YOU MONEY

For variety and value... there's no better buy than A&P meats. They're juicy and tender... carefully chosen for the flavor-filled enjoyment they'll give you. And you can count on A&P to offer uniformly high quality at reasonable prices... day after day, all year long.

All Choice Cuts - Beef

## Chuck Roast **53c**

Serve a hearty meal of this savory Beef Roast!



**Plump, Young Grade "A"**

### CHICKENS

Fricassee or Stew **39c**

**Mild Cured, Ready-To-Eat**

### PICNICS

Short Shank **45c**

Lean, Mild Flavored

**Bacon Squares** . . . . . **39c**

Ready-For-The-Pan

**Dressed Herring** . . . . . **29c**

Ocean Caught

**Fresh Mackerel** . . . . . **29c**

Delicious Ocean Caught

**Dressed Flounders** . . . . . **31c**

### PRODUCE SAVINGS

Jumbos For Juice

## Florida Oranges

Feast your eyes on this big orange buy! Then come to A&P for all the sun-ripened, juice-heavy beauties you need!

**8** Pounds **39c**

Juice Filled, Sweet

**D'Anjou Pears** . . . . . **2 Lbs. 25c**

Crisp, Grit Free

**FRESH SPINACH**

12-oz. Cello Bag **19c**

Tasty, Crunchy

**RED RADISHES** 4 bunches **19c**

Firm, Young Heads

**New Cabbage** . . . . . **2 Lbs. 19c**

Tender, Young, Tasty

**Mild Shallots** . . . . . **3 Bchs. 19c**

Try Them Buttered!

**Fresh Beets** . . . . . **2 Bchs. 17c**

### DAIRY SAVINGS

Sunnybrook Large Grade "A"

## EGGS

Down in Ctn. **67c**

American Cheese Food

**Cheddar-O-Bit** . . . . . **2 Lb. Loaf 89c**

Sure Good Brand

**Margarine** . . . . . **1 Lb. 34c**

Medium Sharp

**Cheddar Cheese** . . . . . **1 Lb. 57c**

Wisconsin Mild Flavor

**Cheddar Cheese** . . . . . **1 Lb. 53c**

Fine For Snacks—Phila.

**Cream Cheese** . . . . . **5-Oz. Pkg. 37c**

Enjoy Their Crisp Goodness

## Apples

Mich. McIntosh or Jonathans **3 Lbs. 29c**

Fancy Delicious

**Apples** . . . . . **3 Lbs. 37c**

Rime Beauty Boxed

**Apples** . . . . . **3 Lbs. 29c**

# A&P Super Markets

### OTHER BAKERY SAVINGS

- Jane Parker Orange Iced
- GOLD LAYER CAKE**
- Each **49c**
- Jane Parker Lattice Top
- Rhubarb Pie** . . . . . Each **39c**
- Jane Parker Spicy
- Pumpkin Pie** . . . . . Each **43c**
- Jane Parker Flaky Danish
- Fruit and Nut Ring** . . . . . Each **39c**
- Chocolate or Vanilla Ices
- French Crullers** . . . . . Each **5c**
- Orange Cluster, Pineapple or
- Raisin Coffee Cake** . . . . . Each **39c**
- Cocconut Iced
- Angel Food Bar** . . . . . Each **43c**
- Creme Filled—6½-in. Size
- Devil's Food Cake** . . . . . Each **39c**
- Jane Parker Salter Crisp
- Potato Chips** . . . . . 6-Oz. Bag **25c**

New Low Price!

Pillsbury or Gold Medal

## FLOUR

25 Pound Bag **213**

- Sliced or Halved
- Loan Peaches** . . . . . 2-Oz. Can **23c**
- Packets Label Blended
- Citrus Juice** . . . . . 2 20-Oz. Cans **19c**
- Packets Label—in Syrup
- Kadota Figs** . . . . . 20-Oz. Can **27c**
- Packets Label
- Halved Apricots** . . . . . 20-Oz. Can **23c**
- Packets Label Natural
- Grapefruit Juice** . . . . . 2 6-Oz. Cans **35c**
- Breakfast Treat—Sunnyfield
- Pancake Flour** . . . . . 2 20-Oz. Pkgs. **25c**
- Ant. Fade Blended
- Table Syrup** . . . . . Pint Jar **24c**
- Lake Shore Delicious
- Pare Honey** . . . . . 1 Lb. Jar **37c**
- Kellogg's New Cereal
- Corn Soya** . . . . . 5-Oz. Pkg. **15c**
- Hy-Grade Honeybrand,
- Corncob Beef Hash** . . . . . 1 Lb. Can **19c**
- Packets Label
- Tomato Catsup** . . . . . 2 14-Oz. Bott. **29c**
- Fine Granulated
- SUGAR** **5 Lb. Bag 47c**
- 10 Lb. Bag 95c

- Serve For Snacks
- Admiral Sardines** . . . . . 2 7½-Oz. Cans **27c**
- Encore Brand—Tomato Sauce
- Prep. Spaghetti** . . . . . 2 16½-Oz. Cans **19c**
- Ant. Fade Spicy
- Apple Butter** . . . . . 28-Oz. Jar **19c**
- Ant. Fade Pure
- Grape Jelly** . . . . . 1 Lb. Jar **25c**
- White House—None Better
- Evaporated Milk** . . . . . 2 Tall Cans **25c**
- Sultana Brand—Red
- Kidney Beans** . . . . . 2 29-Oz. Cans **25c**
- Del Monte Delicious
- Tomato Sauce** . . . . . 8-Oz. Can **8c**
- Pekoe and Orange Pekoe
- Our Own Tea Bags** . . . . . Pkg. of 50 **37c**
- Mild and Mellow A&P Coffee
- Eight O'Clock** . . . . . 1 Lb. Bag **40c**

Golden Whole Corn

**NIBLETS** **2 12-Oz. Cans 35c**

### Former Resident Returns to City for Lecture

Long time residents of Birmingham will have the opportunity to renew an old acquaintance on Friday, Jan. 23, when May H. James returns to lecture at the Community House under the auspices of the Birmingham League of Women Voters.

According to program plans, Mrs. James will speak at 2 o'clock following the luncheon in the auditorium at the Community House.

To accommodate Mrs. James' speaking schedule, the league's regular monthly meeting has been postponed from Monday to Friday.

Mrs. James lived in Birmingham until 1918 and was one of the founders and charter members of the local branch of the American Association of University Women.

Noted Authority

She is a noted authority in the field of education and at present is head of social sciences for the New Haven State Teachers' College in Connecticut. Her record as a prominent speaker makes this month's meeting one of the outstanding events on the league's calendar this season, according to Mrs. F. G. Garrison, president of the organization.

The customary morning session of the league's monthly meeting will not be held. Instead, a luncheon honoring the speaker is scheduled at 12:15 in the Community House preceding her talk. Reservations for the luncheon may be made with Mrs. F. Chalmers Smith, social chairman, who is in charge. She will be assisted by Mrs. H. H. Gardner, Jr.

## TREAT YOUR CAR TO A REAL Mercury Engine Tune-Up!

Your car deserves the best of care—that's real Mercury Service. Here's a special engine tune-up that has more of everything. It will give your car more pep and "go," give you more driving pleasure, save you money, too.

- ★ Tune engine, adjust carburetor, check ignition, spark plugs, distributor.
- ★ Check cooling system.
- ★ Complete chassis lubrication.
- ★ Check safety factors—brakes, lights, wipers.
- ★ Road test car.

Special Low Price!

### TOM McDONNELL, INC.

850 South Woodward

PHONE 4101

IT'S OUR WAY OF MAKING FRIENDS