

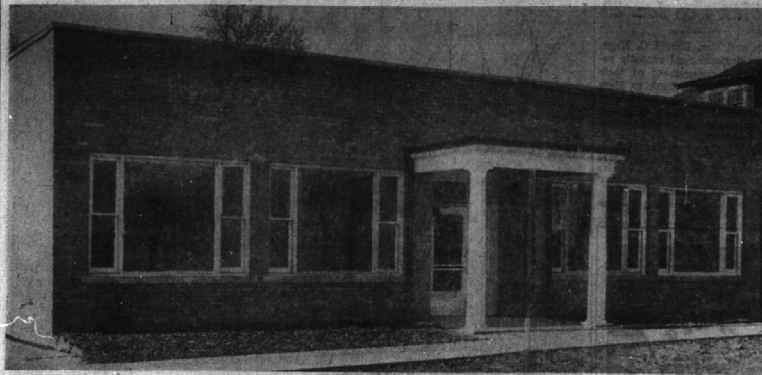
New Officers

Two Birmingham men were honored last week by the Oakland County Torch Club, a national organization made up of professional men. Dr. John K. Ormond, 1169 N. Woodward, was elected president, while James H. Barrett was named secretary-treasurer of the group.

We Heard It Said By:

Theron Van Dusen, city commissioner, in speaking about the new "hotdogs" stand now under construction on Hunter blvd, just north of E. Maple? "I wonder how local citizens can get rid of the thing? I suppose one way to try it would be for all of us to establish a picket line around it."

New E. S. Jackson Office Building



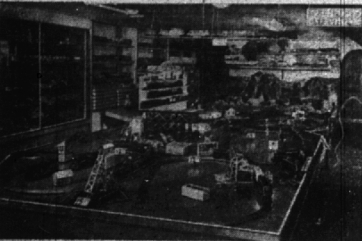
The new office building, located at 750 S. Woodward, shown above, has been built by E. S. Jackson. A part of the building will be used by him for his real estate office, with the remainder of the building to be used by other types of business. The building is 50 x 60, with

Auto Accidents Show Increase of 10 Per Cent

Fewer persons were killed, but there was an increase in both the number of injured and the number of accidents on Michigan highways during the month of October, according to the monthly statistical report of the Michigan State Police.

Commissioner Donald S. Leonard. "Reduced visibility caused by more hours of darkness and bad weather conditions, slippery road conditions due to snow and ice, and the hurry and celebrating which accompany the holiday season combine to make December one of the most deadly months of the year for both pedestrians and motorists. All should be doubly vigilant during this period when hazards are greatest."

TRAINS... TRAINS... TRAINS ARE HERE FOR CHRISTMAS GET YOURS NOW



LARGEST DISPLAY TABLE IN TOWN With 12 Trains Running on One Table LIONEL — AMERICAN FLYER — TRIX TWIN TRAINS Two Trains Run on One Track... Come in and See Them Now While the Stock is Complete. CAMERAS \$6.95 up PHOTO SUPPLIES Downtown Train & Camera Shop 122 W. Elizabeth — One Block North of Tuller Hotel

B. E. 18,446 STATE OF MICHIGAN — The Probate Court for the County of Oakland. At a session of said Court, held at the Probate Office in the City of Pontiac, on the 28th day of November, A. D. 1948. Present, Honorable Arthur E. Moore, Judge of Probate. In the Matter of the Estate of Sophism A. Magson (Sophism A. Magson), Deceased. Sylvia A. Russell, Administratrix of said estate, having filed in said Court a petition praying that the time for the presentation of claims against said estate be limited and the time and place be appointed to receive, examine and adjust all claims and demands against said deceased, and before said Court it is ordered, that two months from this date be allowed for creditors to present claims against said estate. It is further ordered, that the 28th day of March, 1949 at nine o'clock in the forenoon, at said Probate Office, in and hereby appointed for the examination and adjustment of all claims against said deceased. ARTHUR E. MOORE, Judge of Probate. Mrs. Sylvia A. Russell, 4007 15th St., Detroit, Mich.



Poppleton Boy Scout Troop 8-13 will sponsor a box-social and dance on Friday, December 10, at 8:00 o'clock p.m., at the Poppleton School located at Big Beaver road (Sixteen Mile road) and Crooks Road. Prizes galore and there will be

special entertainment for the young-uns. All children under 12 must be accompanied by parents. Free coffee and some refreshments will be served at a nominal cost. The U. S. Navy donated 567 small craft of various types to the American Sea Scouts during 1946 and 1947.

We Heard It Said By: Phil Williams, 708 Larchlea; Birmingham really had the Royal Oak team bottled up in that Thanksgiving Day game. I'm no football expert, but anyone could easily see that Royal Oak was just too slow, while Birmingham had all the speed.



DELTA POWER TOOL Gifts for the MAN in EVERY HOME WHO LIKES TO OPERATE MACHINES THAT FURTHER HIS HOBBY AND SAVES THE FAMILY MONEY

For straight and curved cuts — use DELTA 14-inch Wood-Cutting Band Saw. Lubricated-for-life ball bearings are used throughout. Patented rotating slot permits changing blades without requiring slip-grip bar. Micrometer adjustment screws provide precision settings for blade support and blade guide. Adjustments at front of table help keep your hands away from saw blade. Capacity under table, 3 1/2". Capacity, blade to frame, 14". 14" x 14" table fits 48" to right, 10" to left. Table is slotted for 1/4" x 1/4" miter gage bar. Upper wheel is adjustable for blade tension and blade travel. We're showing this famous Delta 14-inch Wood-Cutting Band Saw now. Come in to see it. \$115.85

Handy DELTA 14-inch Drill Press is 7 tools in 1. It drills, mortises, routs, carves, sands, shapes, and grinds. Takes all standard wood bits up to 1/2" shank. Drills up to 2" diameter, with multi-spur bits. Drills 1/2" hole in cast iron. With convenient mortising attachment, makes square-end mortises from 1/4" to 1 1/2" width — of any length. Self-aligning driver, free-rotating spindle. Sturdy quill design and construction. Standard equipment includes 10" x 10" sliding table, built-in depth gauge, depth scale on quill, and pusher quill. \$74.00

Turn wood and plastics with this DELTA 12-inch Lathe. Includes tool rest base, 4" and 12" tool rest, drive center, 2" scrapers, wrenches, and with rest-free lock. Motor and switch extra. \$124.00. Spindle — casted on lathe. Outside ball bearings 1 1/2" diameter, with 3600 r.p.m. Constant lubrication. Precision ground and tapered rollers machined on lathe. Tailstock center is self-aligning. Come in, to see this safe, accurate Delta 12-inch Woodturning Lathe that's "top" in any shop.

Straight, true jointing with DELTA 6-inch Jointer. Surface boards 8" wider than table 1/2" deep at end. Accurately-ground fence tilts 45° toward and away from blade. Convenient scales on table base on adjustable ball bearings. Three safety guard pivots protect operator from cutting knives. Delta has included other advanced jointing features in this popular Delta 6-inch Jointer. Come in, let us tell you about them. Standard equipment includes 21" x 10" table, foot safety guard, belt, 2" miter pulley, and belt guard. \$105.45

WE ALSO CARRY A COMPLETE LINE OF — HOMECRAFT POWER TOOLS The McBRIDE HARDWARE Co. 128 S. Woodward Phone 255

Hills Girl's League Sponsors of Hayride

Friday night, Dec. 3, the members of the Girl's League of the Bloomfield Hills High School and their escorts enjoyed a hayride. Members of the committee planning the event were Joan Baldwin, Jo Anne Blingler, Dorothy Duffield, Sharon Jones and Joan Cooper. Miss Kate Woodman, Mr. and Mrs. Richard Spies were the faculty chaperones. After the hayrides the chilled and hungry students were entertained in the home of Dolly Milbrand, where they found welcoming fires blazing and a heavily laden table decorated with the Christmas motif.

Pamper Him with Luxury Panels



Limited editions of Superba originals. The bold look, in patterns and colors of good taste. Superbly cut—superbly tailored—\$2.50. Other Superba ties, \$1.00 and \$2.00. Come in and see our Superba selection today. FASHION IS FIRST Superba CRAWFORD

Red Cross Style



WE CAN ISSUE A Gift Certificate For Any Amount For Any Merchandise Which We Carry Gift Certificates for Knox or Hulbert Hats including a Miniature Hat in a Miniature Hat Box

Peck's MEN'S WEAR 108 So. Woodward near Maple Phone 230