

**Kroger**  
*Stock Up Values Galore* **39¢ SALE!**  
**FOR BETTER VALUES TO CUT THE COST OF LIVING!**

**PORK LOIN ROAST**  
**RIB END 39¢**  
 Lb. *Choice Tender Meats*

**STEWING CHICKENS**  
 Plump Rock Fowl  
 4-6-lb. Avg. **39¢**  
 Lb.



Swift's Brookfield 1-Lb. Roll

**Pork Sausage . . . Lb. 39¢**  
 Tender Shoulder Cut

**Veal Roast . . . Lb. 39¢**  
 Sliced or Piece

**Large Bologna . . . Lb. 39¢**  
 39¢ Sale Value!

**Sliced Pork Liver . Lb. 39¢**  
 Kroger Quality

**Beef Short Ribs . . . Lb. 39¢**  
 Streak of Lean

**Salt Pork . . . Lb. 39¢**  
 Tasty Economical

**Rosefish Fillets . . Lb. 39¢**  
 Enjoy This Treat!

**Haddock Fillets . . Lb. 39¢**

**FOR BETTER VALUES TO CUT THE COST OF LIVING**

**DILL PICKLES**  
 Mary Lou Koshier  
 1/2 Gal. 39¢

**Kroger Grapefruit Juice . 2 46-Oz. Cans**  
**B & M Yellow Cream Style Corn 2 No. 2 Cans**  
**Sunsweet Large Prunes . . . 2-Lb. Pkg.**

**39¢**

**FOR BETTER VALUES TO CUT THE COST OF LIVING**

**KROGER CANNED MILK**  
 3 Tall 39¢

**Softasilk Sносheen Swansdown CAKE FLOUR**  
 2 3/4-Lb. Pkg. **39¢**

The Miracle Value!

**Kroger Bread . . . 2 Big 1 1/4-Lb. Loaves 27¢**  
 Save up to 15¢ a Pound

**Spotlight Coffee . . Lb. 40¢**  
 Eatmore Brand

**Margarine . . . Lb. 31¢**  
 Pure Granulated

**Mich. Sugar . . . 5-Lb. Pkg. 45¢**  
 Betty Crocker

**Apple Pye-Quick . . 12-Oz. Pkg. 39¢**  
 Fresh, Sunshine

**Krispy Crackers . . Lb. Pkg. 25¢**

Kroger

**FRUIT COCKTAIL . . . 2 No. 1 Cans 39¢**

Kroger

**TEA BAGS . . . . . 48 Ct. 39¢**

Miracle Whip

**SALAD DRESSING . . . Pt. 39¢**

U.S. No. 1 Grado


**15-Lb. Peck 65¢**

**MAINE POTATOES**

California Fancy  
**Asparagus . . . Lb. 27¢**

Calif. 220 Size—Seedless  
**Oranges . . . 2 Doz. 69¢**

Washington State Fancy Winesap  
**Apples . . . 4 Lbs. 39¢**



**SUPER BARGAIN! See Display!**  
**HOUSEHOLD INSTITUTE**  
*waterless COOKWARE*

**1 1/2-Qt. SAUCE PAN \$1.59**  
 with card (\$3.19 without card)

**30 DAYS' TRIAL**  
 Satisfaction Guaranteed



<b>20 Mule Team BORAX . . . Can 18¢</b>	<b>SPRY New Low Price Lb. Can 42¢ 3-Lb. Can 1.17</b>	<b>KARO SYRUP The Blue Label All-Purpose Syrup 1 1/2-Lb. Bott. 21¢</b>	
<b>Tidy House SANDWICH BAGS . . . . . Pkg. 45¢</b>	<b>STRONGHEART DOG FOOD 3 Cans 29¢</b>	<b>NEW ERA POTATO CHIPS 4 1/2-Oz. Pkg. 33¢</b>	<b>LIPTON NOODLE SOUP 3 Pkgs. 35¢</b>
<b>RINSO Keeps Clothes Bright! Lge. Pkg. 36¢ New Low Price!</b>	<b>PALMOLIVE BATH SOAP Lge. Bar 14¢</b>	<b>Cashmere Bouquet Keeps You Lovely! 2 Reg. Bars 25¢</b>	<b>DEL MONTE COFFEE Vacuum Pack Lb. Can 54¢</b>
			<b>SIMONIZ Keeps Floors Glowing! Pt. 59¢</b>

*Prices effective Thurs., Fri., Sat., April 8-9-10, 1948*

**Pan-American Day**  
 Theme of Play by Bloomfield School

A play, "Holiday in Havana", will be given tomorrow evening by students of Bloomfield Hills School in honor of Pan-American Day. The program will be held in the school at 8 p.m.

The play is being written and directed by Miss Dorothy Hughes, Spanish teacher. Its action centers around a group of students who, with their teachers and chaperones, are in Havana attending a conference of students from 21 republics of Pan-America.

Included in the cast are Marcia Wells, John Service, Connie Vandever, Patsy Edinger, Marjorie Barlow, Nan Gordon, Mitchell Sims, George Bay, Barbara Kuhn, Marjorie Ziesch.

Dick Vachon, Mary Andrews, Craig Kallen, Nick Redfield, Rima Nickel, Robert Hunt, Jane Prince, Carolyn Wolfenden, Bob Minhinick, Dick Martz, Kenneth Kuhn, Shirley Bingley.

Donna Case, Beryl Wilson, Peter Linzer, Carolyn Luttrell, Jane Corrigan, Virginia Andrews, Sonnee Johnson, Sue Anne Hall, A. O. Johnson, Margaret Pickering, Laurene Mulroni and Bert Uebele.

Several dances, typical of the Latin-American countries, have been planned, along with songs from Mexico, Chile and El Salvador.

During the intermission Mary Ann Watson, Joan Wood, Dana Hagaman, Dolly Milbrand, Charles Koella, Tom Jeffries, Robert Hunt, Robert Meyers and Arvid Kallen will entertain with south-of-the-border music. Bruce Stewart and Dick Martz will play accordion selections.

The presentation will be in Spanish and English, and where necessary the Spanish lines will be translated. The program will close with the recitation in Spanish of Stephen Vincent Benet's "Prayer for the United Nations" and the singing of "O Noble Pan-America".



All set to whoop it up, Carlos Bernard, Puerto Rican cyclist of Mayaguez, sports American flags, seven lights, three bells, and three fox tails on his two-wheeled steed. He's ready to celebrate the landing of American Gen. Nelson Miles in April 1898, which Puerto Rico looks on as dating liberation of the island from Spain.

Rich or poor, young or old, there's something to be bought or sold—Eccentric Classified Ads.

**IMPORTANT ANNOUNCEMENT**  
 Call Northside 777 SOON!

**PECK'S Cash and Carry**  
 Suits, Topcoats, 1.29  
 Plain Dresses  
 CLEANED and PRESSED  
 For Delivery Service Phone 230 WOODWARD—NEAR MAPLE

**Big Beaver School News**

The Camp Fire Girls of Big Beaver held their election and the following officers were elected: president, Phyllis Schumborg; vice-president, Shirley Laughlin; secretary, Geraldine Gammon; treasurer, Phyllis Schofield; historian, Ruth Lantz.

Events which are being planned include a weiner roast at Bloomer State Park on April 8, an Oakland County cookie sale, and a project to make booklets for children in hospitals.

The district speech contest for this area will be held at Big Beaver high school on Thursday, April 15th. Clawson, Farmington and Big Beaver will participate. The contestants are: Oratorical declamations—"Whose Responsibility", Doreen

Setlow (Clawson); "That God Forgot to Wind", Barbara Siewel (Big Beaver); "They Were Good Enough for the Army", Fred Lettis (Big Beaver).

Dramatic declamations—"The Tomboy", John Streadwick (Clawson); "The Big Parade Passes", Peggy Labadie (Farmington); "Dark River", Frances Hough (Farmington); "The Murderer's Confession", Evelyn Garrok (Big Beaver); "Afternoon Tea", Mary Jane Young (Big Beaver).

Oratory—"Now is the Time", Audrey Templeton (Clawson).

Extensive speech—"European Recovery Program", Ronald Maierle (Clawson).

Judges will be Miss Ruth Cowen and Miss Eva Moore of Royal Oak high school and Mr. Kenneth Olla of Bloomfield Hills high school.

CLASSIFIED ADS must be at The Eccentric office by five o'clock Tuesday of the week you wish them published. You may phone or bring them in.

**NATURE CAN'T DO IT ALL**

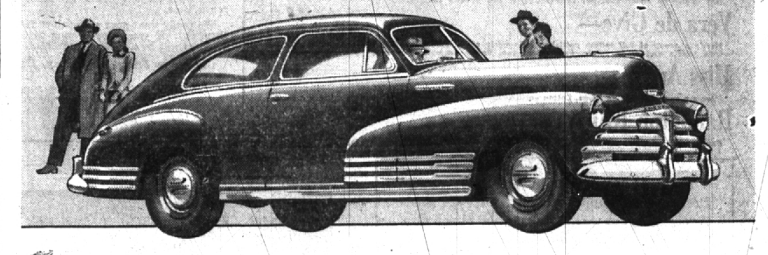
**HELP OUT WITH THE BEST** Grass Seed, Fertilizer, Lawn Mowers, Lawn Rollers, Plastic and Rubber Garden Hose, Hand Tools, Etc.

**ON THE SIDE**  
 Onion Sets  
 Asparagus Roots  
 Vegetable Seeds

**McCLELLAN-BALL CO.**  
 Yard - Garden - SUPPLIES - Kennel - Farm  
 BIRMINGHAM, MICHIGAN  
 Phone 314 155 S. Woodward

**"Talk about VALUE," says America**

**"CHEVROLET and ONLY Chevrolet IS FIRST!"**



You'll find that new front-end styling—new colors—new and even more luxurious interiors add still further to the Big Car beauty of Chevrolet's Bodies by Fisher. They're the world's finest bodies, found only on Chevrolet and higher-priced cars.

You'll get much better performance with economy from Chevrolet's world champion Valve-in-Head engine. It has the finest record of dependability of any automotive power plant and Valve-in-Head engines are exclusive to Chevrolet and more expensive automobiles.

Now such more smoothly and steadily Chevrolet rides on all types of roads! Here's real Big-Car comfort. It's the new result of the United Knee-Action Gliding Ride, and this feature, too, is found only on Chevrolet and higher-priced cars.

You and your family will have Big-Car safety, too. For Chevrolet brings you the three-fold protection of Fisher Uniflex body-construction, the Knee-Action Ride, and Positive-Action Hydraulic Brakes—another conception of features found only in Chevrolet and more costly cars.

As you know, public demand for new 1948 Chevrolets is at the highest level in all Chevrolet history. For that reason, we urge you to keep your present car in good running condition, pending delivery of your new Chevrolet. Come in, get a dependable service, now and at regular intervals.

**CHEVROLET**

Turn in Scrap Iron and Steel

**THE NORTH CHEVROLET COMPANY**  
 1000 So. Woodward Ave. Phone 3202