

Local Rotary Club Visits Ford Plant

Forty members of the Birmingham Rotary Club made a two-hour tour of the Ford Rouge plant Monday afternoon where they were shown the motor as-

sembly and final assembly lines. The visit was arranged by Rotarian Harold Turner, local Ford dealer.

The group went from Birmingham to the Dearborn Inn for luncheon, from which they were taken to the plant and returned in special Ford Motor Co. buses.

Polly Sawyer's Cupboard Opens on September 22

Polly Sawyer's Cupboard is one of the newest additions to Birmingham's business center, two doors north of Willis at 331 N. Woodward. Opening next Monday, this new shop is filled with antiques and gifts—furniture, china, glass and silver, both old and new.

Just inside the door the customer meets the heiress that gives the shop its name—Polly Sawyer's Cupboard. This specimen of Early American craftsmanship, in walnut and crotch mahogany, had been handed down from generation to generation, until in 1863—it became a wedding gift and then it graced one dining room for more than 80 years.

Throughout the shop is a wide selection of other antique furniture—such pieces as banquet tables, drop-leaf tables, side tables, Welsh and corner cupboards, secretary chairs and grandfather clocks—of New England and Pennsylvania origin, ranging in period from pre-Revolutionary to Victorian.

The abundant stock of silver consists of antique Sheffield and Victorian items, and also contemporary Sterling flatware in a wide assortment of patterns by outstanding manufacturers, plus hollow ware, both Sterling and plate, by all leading makers.

A large collection of cups and saucers, both old and new, is a feature of the china stock. Among the antique English, French and German items are pieces in Dresden, Meissen and Bique. There is also a large stock of Hobbie china, a hand-made contemporary American porcelain produced by Old World craftsmen, and of English Bone china and contemporary pottery imported from France and Italy. Antique glass on display includes specimens of Early American hand-blown, pressed and flint glass.

The special Pine Room offers an intriguing collection of Early Provincial pieces in pine and maple, with an assortment of quaint, old iron and brass fireplace accessories, copper kettles, trivets and wooden bowls.

CITY OF BIRMINGHAM, MICHIGAN
NO. 278

NOTICE OF SPECIAL ASSESSMENT
LINCOLN-PURDY INTERCEPTOR
Notice is hereby given that Special Assessment Roll No. 278, heretofore made by the assessor for the purpose of defraying the cost of construction of intercepting sewers to provide more adequate drainage in the Lincoln-Purdy area, is now on file in my office for public inspection.

Notice is also hereby given that the Commission of the City of Birmingham will meet in the Commission Room in the Municipal Building in said City on Monday, the 22nd day of September, 1947, at 2 P. M. to review said assessment, at which time and place opportunity will be given to all persons interested to be heard.

IRENE E. HANLEY,
City Clerk.



By Kay Kewlin

Have you been out for Sunday night supper lately and wondered where your hostess found all those delectable foods? Without doubt, they came from Gourmet, a shop operated by Charles del Gaudio at 145 S. Woodward. Gourmet recommends the products of S. S. Pierce of Boston, a firm founded in 1831. They have richysoles, lobster bique, and minestrone soup, as well as French, Russian and 'Epice' Rougettes dressing. Be sure to try the lingonberry jam made of wild cranberries from Iceland. And the orange jelly with wild honey is utterly delicious. Phone 205.

Why not have your washing machine put in first class condition, without waiting until it is REALLY in need of major repairs? Baugh's Bike Shop, 341 S. Woodward, will pick up your machine, put in new wringer rolls, make the necessary adjustments and repairs and return it to you in new condition. Baugh's carry a complete line of repair parts for every washing machine made, and therefore give you excellent service, with no waiting for parts. Just call 3797 and have your washer picked up today—don't wait until it has a breakdown.

One of the most interesting shops I've found in many a moon is the newly opened Olde Lantern Shop, 151 S. Woodward, where Mrs. Martha Bennett is providing a retail outlet for hand made articles of all kinds. I found the most fascinating assortment of unusual merchandise, ranging from lamps and lovely aprons to knitted and crocheted goods. Another thing of real interest is that Mrs. Bennett is starting a "Veteran's Corner," sponsored by the Mom's Club of Birmingham, that will sell articles made by veterans at no profit to the shop. Fine idea!

One job that has never appealed to me is stripping the snow suit off a tiny tot for the necessary changing process. That's why I think the snow suits on display at the Colonial Shop, Adams Rd. at Woodward, that are fully zippered between the legs, are simply wonderful. They're made by Rothschild, tested and commended by Parents Magazine, are washable and Zelan processed. For older youngsters there are three piece snow suits—coat, leggings, and hat that are tailored for boys and daintily fashioned for girls. All models come, of course, in pink or blue.

All you former customers and friends of Sterling Reaveley will

be interested to learn that he has opened "The House of Sterling Reaveley" at 3322 Woodward Ave., Pleasant Ridge, which is something entirely new and different in a beauty shop. Actually, the new establishment is one of the most beautifully appointed, elegant, and just plain gorgeous beauty salons I have found this side of Fifth Avenue. Better call Mr. Reaveley at Lincoln 2-7081 and make an appointment right now, as his appointment book will soon be full for weeks ahead.

Almost any evening now you'll want to have a roaring fire in your fireplace, so now is a good time to install the Bennett Flexscreen—the safety fireplace curtain. Brues Unlimited, Woodward Ave. at 74-Mile Rd., carry a full line of Bennett Flexscreens in stock, and can make immediate installation of either permanent or frame (portable) type. Like a theater curtain, Flexscreen slides open or closed with one-hand Unipul and affords complete safety protection. And there's still time to have your fixtures refinished—like new.

Now that the children have been outfitted for school, it's time for mother to think about her own fall wardrobe. Marguerite, 250 N. Woodward has a marvelous collection of suits and dresses in those hard-to-find larger sizes. Figure flattering and youthfully styled by such fashionable designers as La Rue, Gerrick, and Mary Elizabeth, they come in sizes up to 48. You'll find both prints and plain colors in a range of soft shades that are so becoming to the larger woman. And the

Marguerite label, you know, personifies taste and excellence.

It seems to me my husband just never has enough white shirts, and it has been a long time since white shirts of good quality were available at a moderate price. Peck's Men's Wear, 108 S. Woodward, have an excellent selection of beautifully tailored Jayson white shirts right now in a full range of sizes, priced at \$3.95. Or if your husband prefers colored shirts, see Peck's tan, blue, and grey stripes, with the popular low-boy collars, at \$3.50. The trend is to conservative ties this fall, so you'll want to select several handsome Superba cravats at \$1.50.

STATE OF MICHIGAN—ORDER OF THE CONSERVATION COMMISSION—SUFFED GROUSE.

The Director of Conservation, having made a thorough investigation relative to the hunting ofuffed grouse, recommends certain regulations.

THEREFORE, the Conservation Commission, by authority of Act 235, P. A. 1935, hereby orders that for a period of one year from October 1, 1947, it shall be unlawful to hunt, take, or kill or attempt to hunt, take, or kill anyuffed grouse in the State of Michigan.

Signed, sealed, and ordered published this fourth day of August, 1947.
DONALD B. MCLOUTH,
Chairman.
WAYLAND ONGER,
Secretary.

Counterbalanced: F. J. HOFFMASTER, Director. 25-27

MOVE WITH POTTER And the ALLIED VAN LINES



POTTER MOVING AND STORAGE CO.
136 Brownell
Phone B'ham 2112

Announcing A NEW COMIC

... which will appear each Thursday in the Eccentric. It's a left riot from beginning to end—a masterpiece of mirth!

... presented by McCallum & Dean

Provoking Personalities

Don't miss the fun! Watch our ads every week for this comic classic which makes fun of all our many friends and neighbors, from the respected business to the pocket-picking wife. This feature begins next Thursday.

PHONE BIRMINGHAM 4050
McCallum & Dean
ELECTRONIC AND SUPPLY ENGINEERING
SALES SERVICE
409 EAST MAPLE AVE

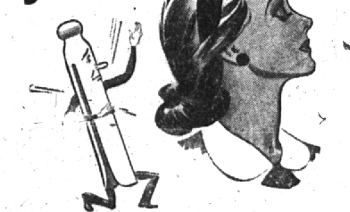
Plaid Highlander..

Plaids are big this fall — and the bigger the better. Here's a stunning two piece... fashioned of SHAMOKIN'S 100% worsted giant plaid, with a nipped in waist and two fashion-wise pockets. Gay plaid combinations in sizes 7 to 15.

\$16.95



JILTED—



FOR A NEW AUTOMATIC DRYER

\$229.75
only \$75.00 down

Look, lady—haven't you been slave to the clothespin long enough? Aren't you about ready to call it quits on lugging big washes... hanging up clothes... taking 'em down... having 'em soiled by smoke, soot, dust?

Sure you are! And you can call it quits, too—with a beautiful new General Electric Automatic Tumbler Dryer. It's a washday wonder you'll love. Rain or shine, it dries clothes indoors—thoroughly dry in about 30 minutes—less if you want them just damp enough to iron. Completely automatic—shuts off by itself. Holds a full washer load—up to 9 pounds.

GENERAL ELECTRIC HOME LAUNDRY EQUIPMENT

SEE IT NOW!
Come in or telephone for a demonstration

162 W. Maple

For downright COMFORT and CONVENIENCE you can't beat an AUTOMATIC GAS WATER HEATER



CLEAN
FAST
DEPENDABLE

INEXPENSIVE
TO OWN AND
OPERATE

This big new HANDLEY BROWN AUTOMATIC GAS WATER HEATER is designed specifically to meet all your hot water needs; it replaces the hot water supply almost as fast as it is drawn off. Costs amazingly little to operate and it will eliminate old-fashioned fuss and inconvenience. An automatic gas water heater is a necessity in every modern household. Why not order one in the right size for your family today?

IMMEDIATE DELIVERY
CONSUMERS POWER COMPANY

NOW! Save 5 ways in this SPECIAL WASHER TRADE-IN OFFER

- SOAP SAVINGS ADD UP TO \$10 PER YEAR WITH THE THRIFTY BENDIX! Ordinary half-the-job washers may wear "bargain" price tags, but cost a lot more in the long run!
- SAVE WEAR AND TEAR ON CLOTHES! NO AGITATOR IN THE BENDIX! No rubbing, scrubbing and twisting... "Tumble-Action" is gentle action, assuring long life to the daintiest fabrics.
- SAVE WORK! THE BENDIX DOES IT ALL... WASHES, TRIPLE-RINSES, DAMP-DRYS AUTOMATICALLY! All you do is set the dial and add soap. The Bendix does the washing beautifully even when you're not there.
- IMPORTANT HOT WATER SAVINGS, TOO... THANKS TO BENDIX "TUMBLE-ACTION." Clothes are "dunked" hundreds of times in and out of a small amount of hot suds... the thriftiest way to get clothes cleanest.

GENEROUS ALLOWANCE ON YOUR OLD MACHINE HELPS PAY FOR YOUR NEW "DO-EVERYTHING" BENDIX! Phone today to find out how small the down payment can be if you turn in your old timer now.

BENDIX automatic Washer

STANDARD MODEL

DE LUXE MODEL

PHONE TODAY FOR A TRADE-IN OFFER ON YOUR OLD WASHER... TAKE 15 MONTHS TO PAY FOR YOUR NEW BENDIX

Phone 223

Leonard's

162 W. Maple