

Participates in Navy Supply Trip Into Arctic Area

John L. Wichman, chief metallurgist, USN, son of Mr. and Mrs. H. J. Wichman of 1430 Humphrey Street, while serving aboard

the attack cargo ship USS Union, participated in the Navy's annual Resupply Expedition to Point Barrow, at the northernmost tip of Alaska. Four attack cargo ships, a landing ship tank, and an ice breaker comprised the expedition which carried 20,000 tons of cargo ranging from paper clips to giant cranes—a full year's supply for the workers of the scattered camps of Naval Petroleum Reserve No. 4,

a 35,000 square mile area lying well inside the Arctic Circle. The expedition left San Diego early in July, stopping at Fort Huene and San Francisco, Calif., and Seattle, Wash., to load supplies. Mass of Solid Ice North of Bering Strait the Arctic Sea is a solid mass of ice for all but a few weeks in mid-summer, when off-shore winds open a hazardous channel along the coast. The ships of the expedition had to ice breaker USS Burton Island, thread this channel, aided by the often smash their way through, unload their supplies, and race back through the channel to the safety of the open sea. The prodigious task of unloading on the beach was accomplished in five days by the ship's crews working around the clock, aided by the Arctic midnight sun. Use Sled Trains and the other beaching points, caterpillar tractors hauled the supplies hundreds of miles on sled trains to the various camps of the reserve, one of the largest undeveloped oil districts in the world. The work was turned over to civilian contractors early last year, but the Navy still undertakes delivery of supplies. Rear Admiral A. D. Struble, USN, Commander Amphibious Force, Pacific Fleet, exercised overall direction of the expedition. The Naval Squadron that made the trip was commanded by Capt. B. S. Anderson, USN, Commander Transport Division 12, in his flagship, the USS Seminole.



long, lithe, and lovely!

That's you in this long-torso two-piece of Tagbroy! Detachable taffeta collar and bow... a MARIE PHILLIPS Pledged-to-Value original in purple, deep green, gray, black, or brown. Sizes 9 to 15, 10 to 16.

\$12.95

Open Friday Evenings Till 9



Nickel does not rust and strongly resists corrosion by salt water, by many acids, caustics and other chemicals. When alloyed with steel along with chromium and other alloying elements, such as in stainless steel, nickel helps to make those metals resistant to heat and corrosion, too.

No. 51811 STATE OF MICHIGAN — The Probate Court for the County of Oakland. At a session of said Court held at the Probate Office in the City of Pontiac, in said County, on the 25th day of September A. D. 1947. Present, Honorable Arthur E. Moore, Judge of Probate.

In the Matter of the Estate of Arda C. Bassett, Deceased. Clerk L. Bassett having filed a petition praying that an instrument filed in said Court be admitted to Probate as the last will and testament of said deceased, and that administration of said estate be granted to Clark L. Bassett, the executor named in said will, or to some other suitable person. It is Ordered, That the 27th day of October A. D. 1947 at 9 o'clock, in the forenoon, at said Probate Office in here by appointed for hearing said petition, variously ordered. The public notice thereof be given by publication of a copy hereof, once a week, for three consecutive weeks, previous to said day of hearing, in the Birmingham Evening News, a newspaper printed and circulated in said County, and that proponents cause a copy of this notice to be served personally or by registered mail, return receipt demanded, to each of the known heirs at law, legatees and devisees at their last known place of address at least ten days prior to said day of hearing.

ARTHUR E. MOORE, Judge of Probate. Clarence W. Blinnman, Atty., 207 Wabash Bldg., Birmingham, Mich.

Pollock Patter

By Kay Knowlton This week when I stopped at Mint's, 1360 S. Woodward, for a bite of lunch (I could just live on Mint's ice cream), I remarked how nice the counter girls always looked in their crisp white uniforms. Mrs. Holmes suggested that I inspect the kitchens and see for myself how Mint's go to no end of trouble to maintain ultra-high food standards that are reflected in the meals we all enjoy. She also asked me to remind you to order special ice cream molds for the children's Halloween party soon, and not wait until the last minute.

Don't wear bitter tears when you start getting your best china ready for the holidays, and discover the handle has been knocked off the gravy boat or one of your cups. Just take it to George's China Mending, Adams Rd. at Woodward Ave., and have George put it together for you—just like new. George uses a special fusing process that gives real permanence to the mended part. And remember that George can make almost anything decorative into a lovely lamp, from one of your husband's best decoy ducks to your favorite vase.

There are no statistics available (that I know of) on how many of you good people still prefer to sleep in double beds—but if you do—you'll like the Restonic Triple Cushion Mattress that is now on display at Wieland's Fine Furniture, 523 N. Woodward. The Restonic, you know, adjusts itself to the unusual weights of most sleepers, so there is no rolling to one side or the middle. It's completely turtles, too, which means no bumps, lumps, or buttons, and has full spring construction. It's also available in twin bed size.

How would you like to have a personal shopper to select your meats and groceries in fine style? Just call Fisher's Market, 1131 E. Ruffner, Adams Square Building at Woodward—phone 2353, and let Mr. Fisher handle everything for you. Lots of Mr. Fisher's customers say he does a better job of "shopping" than they could possibly do for themselves. We can understand why, for when you place a phone order, Fisher's have a perfectly marvelous selection of groceries, green stuffs and meats to choose from in filling your order.

Perhaps the best way we know to observe "Fire Prevention Week" beginning Oct. 12th, is to provide the most essential fire prevention equipment for your home. Craig Appliances, Inc., 112 S. Woodward Ave., recommend the "Sno-Fog" extinguisher, made by the General Detroit Corp. It contains carbon dioxide, a liquid that is harmless to rugs and upholstery, and can even be squirted on a steak when it catches fire without changing the taste or spreading the burning grease. For real safety be sure to install a "Sno-Fog" extinguisher on each floor of your home.

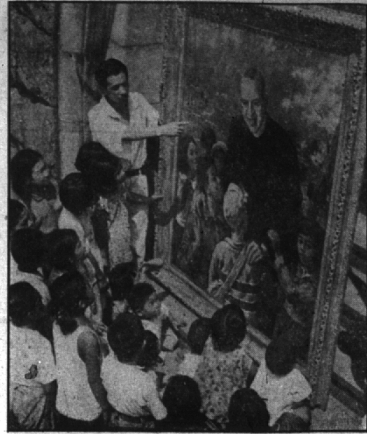
This is a good time of year to inspect all of your window shades and order the ones that should be replaced. Just call Bessemer's, 2353 S. Woodward at Oakridge, Fergdale (phone Royal Oak—4938), for a free estimate on the shades you need. Bessemer's carry a complete line of quality shades, and can give you two-day service on shades cut to fit every window in your home. The store has a marvelous line of drapery hardware, and can help you select the metal or plastic fixtures that look best with your drapes.

Even though my chicks are too "grown up" to play with toys, I like to keep a box of them on hand to entertain my friend's small fry when they come calling. This week I found a way to replenish my supply, for practically nothing at all, at the Indian Craft and Gift Shop, 18 W. Maple. The shop is closing out their complete stock of toys at reductions of 50 per cent and more, which means you can get a lovely \$8.95 bowling set for \$4.50, a whole fleet of plastic sail-boats at 10c each, and character dolls for only 50c.

It's fireplace time at Brass Unlimited! This unusual establishment, located on Woodward Ave. at the 14-Mile Rd., now has heavy duty fireplace grates—the sturdy grates that are from 28 inches to 40 inches wide, and have been in order since February, 1946. They have removable ends, so you people who have room to burn 4-foot logs can do so with ease. And Brass Unlimited has all types of "Flexcreens" in stock and will make immediate delivery on the type you want, either permanent or portable.

GRESHAM CLEANERS
1188 S. Woodward
CASH AND CARRY
Three-Piece SUIT \$1.19
Ladies' Plain DRESSES
DRIVE IN... FAST SERVICE
PHONE 2959
Pick-up and Deliver
HOURS: 8 A. M. TO 8 P. M.

In Honor of Father Flanagan



In remembrance of Father Flanagan's recent visit to Japan, artist Tora Sasaki painted this audience portrait of the founder of Boys' Town, which he displays to an audience of eager children in Tokyo. The painting will be hung in Tokyo's Goro Station, a favorite meeting place for vagrant children such as are pictured on the canvas with the famed priest.

MOVE WITH POTTER
And the ALLIED VAN LINES
POTTER MOVING AND STORAGE CO.
136 Brownell Phone B'ham 2112



LANDSCAPE with the aid of a long range planting plan
A Studied, well designed planting by an experienced landscape architect costs no more than an ordinary one.
Doan R. Ogden will draw professional plans and specifications especially tailored to your grounds.
THIS SERVICE IS FREE
—Specialist in revising old plantings—
15th year as Senior Landscape Architect with the
PONTIAC NURSERIES
Romeo, Michigan
CALL COLLECT — ROMEO 350 OR 325

THE ONLY THING I EVER DROPPED WAS A HINT TO USE THE YELLOW PAGES OF THE TELEPHONE DIRECTORY FOR "WHERE-TO-BUY-IT" INFORMATION



INFORMED BUYERS Prefer BANK FINANCING
THAT SAVING WAS REALLY WORTH WHILE
SAVINGS RESULT FROM FINANCING THROUGH OUR BANK
Finance Way
BIRMINGHAM NATIONAL BANK
Financing automobiles, household appliances and other necessities is one phase of our expanding banking services; You get low-cost, quick service without red-tape. You do business with your neighbors who are interested in the success of folks in our community. Our financing service is available to you even though you may not be a depositor in our bank.
LOW RATES START AT SLIGHTLY LESS THAN 3 1/2% PER MONTH Per \$100 on New Cars
The BIRMINGHAM NATIONAL BANK
BIRMINGHAM, MICHIGAN
Member Federal Deposit Insurance Corporation
Member Federal Reserve System

FOR REAL MERCURY SERVICE SEE YOUR Mercury DEALER



IT'S OUR WAY OF MAKING FRIENDS
MORE SERVICE FACILITIES
The most modern service equipment... large stocks of official Mercury parts... Mercury-skilled mechanics... faster handling of your service needs.

MERCURY-PROVED METHODS
When you leave your Mercury with us you know that Mercury experts will use Mercury-proved methods for every step of the job—your assurance of work that is done right.
SERVICE THAT SAVES
Regular inspections correct little troubles before they grow into big ones—saving you time and money. Drive in today—and see how your Mercury responds to real Mercury Service!

TOM McDONNELL INC.
850 So. Woodward, Birmingham Phone 4101

YOU ALWAYS GET MORE WITH MERCURY SERVICE