

I have observed that financial success is no guarantee to real happiness. The money you earn you may lose very quickly. But the life you make for yourself in the realm of brotherly love remains forever.

The Birmingham Eccentric

PAR
TW

SEVENTIETH YEAR—NO. 33

BIRMINGHAM, OAKLAND COUNTY, MICHIGAN, THURSDAY, NOVEMBER 6, 1947

\$2.00 PER YEAR (In Oakland County)—SINGLE COPIES,

More Practice Brings Bowling Averages Up

There has been a good turnout of Saturday morning bowlers, and the boys are really marking up the scores. Charles Kenworthy came

out high man with a score of 157 closely followed by Ron Israel with 151. A good many boys have brought up their averages in the three weeks they have played. They bowl from 10 to 12 on Saturday morning and everyone seems to have a good time, it is reported.

BEVERLY HILLS

This attractive brick Colonial was finished in 1940 and it's in fine condition. The lot is 105 by 130, completely fenced and nicely planted. Three nice Bedrooms and Bath on the second floor with a fourth Bedroom, unfinished. It's in the Birmingham school district and the bus passes nearby. First time offered.

PINE LAKE

Here's a new brick year 'round home on the shores of Pine Lake, offered completely furnished including 2 boats for your leisure use. Four Bedrooms and two Baths, first floor utility and laundry. The lot has 100 feet on the lake by 340 deep, nearly an acre. There's a beach house and a tool house.

REASONABLE TERMS

Large 3 Bedroom brick home—100 ft. lot. \$4000 down.
Colonial 3 Bedroom in Beverly, only \$13,000, \$4000 down.
English 3 Bedroom, gas heat, near Woodward, \$3,500 down.

BRICK BUNGALOW

This is an opportunity for someone with imagination. The house is beautifully built of brick, with oak trim and would remodel very well. Two bedrooms and Bath on the first, two Bedrooms and room for a Bath on the second. Excellent location, close to transportation and shops. Only \$12,500

CALL

MAX BROOCK INC.
REALTORS
ESTABLISHED 1935

300 S. Woodward Birmingham 1212



Bits of Birmingham

Local resident Russell Barnes, a foreign correspondent and news analyst, will be in Ann Arbor tomorrow morning to give his views on "Russia's Expanding Power" to several hundred Michigan daily and weekly editors who this week end will be holding their annual University Press Club meeting at the college town. The meeting will wind up Saturday afternoon as the newspapersmen and their wives witness the Indiana-Michigan football game.

Seven years ago Mrs. Rose Bryce, 1171 Holland street, accepted one basket of laundry from George C. Booth of Bloomfield Hills. Since that time, the number of clothes baskets she gets every week has increased to the point where this week she is opening a hand laundry on Forest street and will employ six women.

Another house organ hit the streets last week, and it is one published for the benefit of local YMCA members. Edited by Secretary Ed Kirbert, the four-page mimeographed paper carries the latest information concerning Birmingham Y activities.

For the first time in many years, city commissioners last Monday evening did not have before them a hearing on some particular item.

RALPH A. MAIN
CIVIL ENGINEER and SURVEYOR
Subdivision Design and Layout
Certified Lot Surveys
Walsh Bldg. Birmingham
Phone 5144

INSURE
with the
HARTFORD
INSURANCE
COMPANIES

All Types of Policies
FIRE, MARINE, AUTOMOBILE
LIABILITY—BURGLARY
PHONE 328-J
Birmingham Representative
RICE A. HOWELL
WABEEK BUILDING

icular project. This hull is not expected to continue for long, according to the rate that special assessment projects and other matters have been placed before the commission in the past.

This Wanderer has been asked to convey the sympathy of the city to Janet Fosenknecht, Janet, youthful, folk violinist, was to have assisted on the program of Maria Montana, world-famed soprano, last Wednesday evening, but was confined to the hospital with an attack of pneumonia. It is hard when a youngster has been given such an opportunity to have it snatched away, and Janet has the sympathy of everyone in Birmingham, as well as their good wishes for her speedy recovery.

The members of Birmingham Chapter No. 220, O.E.S., should take a bow. Words of praise have reached this column from several who were fortunate enough to have attended the public installation of their officers last Wednesday evening at the Masonic Temple. One gentleman, not a member of the Order, nor a Mason, said he had no idea that it could be so beautiful. From a visiting member it was learned that never in her many years in the Order had she seen such a beautiful and impressive ceremony. The whole chapter is to be congratulated on the work, and especially those who planned and presented the ceremony.

Pvt. Art Williams, former tennis player for Baldwin High School has done it again. Last spring Art was graduated from Baldwin and enlisted in the Army for a two-year hitch. He is now taking his thirteen-week basic training at Fort Knox. The Third Armored Division tennis tournament came along and he couldn't resist the temptation to get into the swing again. He teamed up with T/5 Wilmer Lee, from Illinois, and together they walked off with the Division Doubles Championship. They topped their opponent, 7-5, 6-0.

This Wanderer suggests that you take a little walk over in the direction of Hill School and see what the artistic children of our schools are doing. There in the main hall is an exhibit of paintings and such done by school children from the various schools in the Birmingham school district. All pictures include the fall motif. One picture is a large cloth about 4 ft. by 3 ft. which has been stenciled. Each block on the border is the inspiration of a different child yet the whole cloth is so well put together that one would judge it to be the production of only one artist. Another work created by the children of the Bloomfield School is that of a hanging scene cut-out paper presenting to the onlooker a pic-

ture with perspective. Wander over.

A number of local motorists are wondering when that new auto showroom on South Woodward will be through having to tear holes in the pavement. Three times already they have been forced to proceed carefully around the obstructions as new holes have been opened. "The pavement looks like a check-board with the various asphalt patches," one driver commented to this Wanderer Monday afternoon.

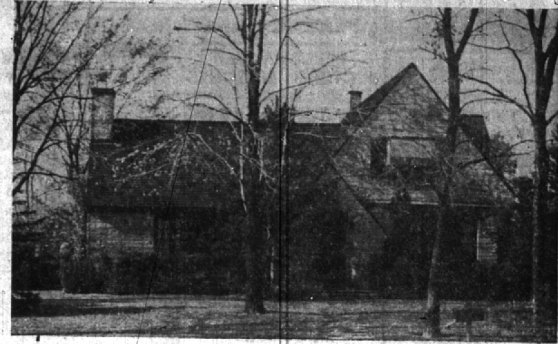
Residential property owners who petition the city commission for

future street surfacing improvements should be advised that their petition should ask for "asphaltic concrete" pavement. According to an agreement among city commissioners Monday evening, no longer will this 2-inch surfacing be referred to as "blacktop." Explained City Manager Donald C. Egbert, "Blacktop covers a multitude of sins." The asphaltic concrete is the type the city has always put down and will continue to do so, said Egbert, and that is the technical name of the mixture.

Those red-green signal lights (More BITS on Page 6, Part 2)

INSURANCE BOND
THE BIRMINGHAM AGENCY
CHAS B RANDALL
OSCAR P PETERSON
Insurance for Every Need
PHONE 840
106 S WOODWARD BIRMINGHAM

CRANBROOK ROAD...



In Bloomfield Village

Is indeed an enviable address. This home with its rugged stone construction and attractive architecture is quite in keeping with the character of surrounding properties. On two lots superbly landscaped, nothing interferes to confine your view of the lovely countryside.

A studio living room with a fine beamed ceiling sets you up as you enter the residence. The adequate screened porch is properly placed to take full advantage of southwesterly breezes. Upstairs are 3 bedrooms and 2 baths. Heat is oil-fired air. There is a games room in the basement. Everything is in prime condition. Taxes are \$200. Quanton School is 4 blocks away.

The price is just \$32,500.00.

SNYDER KINNEY & BENNETT INC.

239 S. WOODWARD

BIRMINGHAM 1400

Birmingham-Bloomfield Properties

IMPOSING MARYLAND STONE HOME.

On 240 ft. beautifully landscaped site. The Living Room is large and bright with wide fireplace. The dining room and glassed porch overlook the garden. The library is paneled and located off the spacious hall. Kitchen tiled and modern, ample sized, breakfast room. Also on 1st floor is a tiled lavatory.

On the 2nd floor are 4 family bedrooms, 2 tiled baths, plus maid's room and bath, with rear stairs.

The chestnut paneled recreation room reached from a separate stairway has fireplace, tiled floor, excellently equipped bar and large powder room.

STATELY OLDER FAMILY HOME.

On about 1/4 acre with magnificent trees. Convenient to shops and schools.

Living room, music room and library, dining room, kitchen and lavatory on 1st. Four bedrooms, one with fireplace, bath and lavatory on 2nd. All large rooms. Oil heat, 2 car garage — \$18,500.

ATTRACTIVE FRAME NEAR PIERCE AND BARNUM SCHOOLS.

Living room, den, dining room and kitchen on 1st. 3 bedrooms and bath on 2nd. Oil heat. Good location — \$12,000.

WALSH, JAMES & WASEY CO.

Birmingham 4900

431 So. Woodward Avenue



FROM PLANNING TO LIVING

The Birmingham Federal Savings and Loan Association can help make your home a reality and give you secure home ownership on the soundest kind of payment plan. Come in and see us today and let us assist you in making your dreams come true.

BIRMINGHAM FEDERAL

SAVINGS AND LOAN ASSOCIATION

Woodward at Maple — Phone 1040

Member of Federal Home Loan Bank System and Federal Savings & Loan Insurance Corporation

PECK'S REMODELING SALE

Starting Today Offers

OPPORTUNITY

For Great Saving In

MEN'S WEARING APPAREL

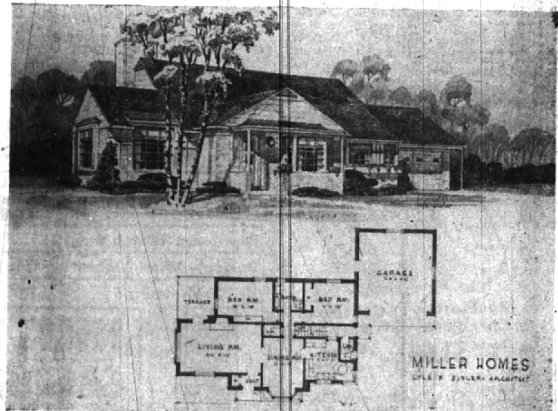
Here You Will Find Outstanding Values In Every Department

QUALITY plus PRICE APPEAL AND SERVICE WITH A SMILE

108 S. Woodward Ave.
Birmingham

New Brick Ranch Type Home

OPEN SUNDAY 2 P.M. TO 6 P.M.



Dunblaine, just off Southfield, in the Birmingham Golf Club area. Choose your own decorating. Four bedrooms, two baths, oil air conditioned heat, two-car attached garage, inspect this new home today.

FOR FURTHER INFORMATION
SBB

BENJAMIN and STEPHENS, INC.

219 S. WOODWARD — Realtors — BIRMINGHAM

PHONE 4129