



# Palate-Pleasers

FROM A&P'S  
COLORFUL COLLECTION



## DAIRY FOODS

To keep you cool during Lent—

- Silverbrook Creamery
- Butter . . . . . **74c**
- Sunnyfield Large Grade "A" Fresh Eggs . . . . . **56c**
- Wisconsin Cheddar Cheese . . . . . **52c**
- Tasty Flavorful Blend Cheese . . . . . **59c**
- A Sandwich Favorite Swiss Cheese . . . . . **85c**
- American Cheese Food Ched-O-Bit . . . . . **85c**
- Smooth Philadelphia Cream Cheese . . . . . **2 25c**
- Zesty Flavored Gold-N-Rich . . . . . **69c**
- Blue Bonnet Brand Oleomargarine . . . . . **44c**

## FRESH FRUITS AND VEGETABLES

A&P's Produce Department is a riot of color, with its rows and rows of scarlet tomatoes, golden carrots, ruby-red radishes, emerald broccoli and other bright spring fruits and vegetables galore. They're young! They're tender! They're fresh from the farm . . . rushed to your A&P for flavor peak! Best of all, these mouth-watering masterpieces of Nature are mighty modestly priced, for A&P has a gift for thrift. Stop in and feast your eyes today! Then take home a basketful of beauties to make your table the picture of spring!

### Prize-Winning Beauties—California

- 200-220 Size 49c
- 150-176 Size 63c
- 100-126 Size 85c
- Iceberg Green Crisp—60 Size
- Fresh Lettuce . . . . . **2 For 19c**
- Sweet Pink Meat—80—96 Size
- Grapefruit . . . . . **10 For 29c**
- Marsh Seedless Grapefruit . . . . . **53c**
- Hot House Grown Tender Pink Stalks
- Fresh Rhubarb . . . . . **2 Lbs. 29c**
- U.S. No. 1 Grade, Michigan Potatoes . . . . . **\$1.59**
- For A Change In Menu—Porto Rican Sweet Yams . . . . . **3 Lbs. 29c**
- Michigan Mild-Flavored Dry Yellow Onions . . . . . **39c**
- California Crisp Golden Fresh Carrots . . . . . **3 Bchs. 25c**
- Nut-like Flavor, Crisp—24 Size Pascal Celery . . . . . **25c**
- Serve A Boiled Dinner New Cabbage . . . . . **6c**
- Sun-sweet—Medium Size Dried Prunes . . . . . **46c**
- Add Extra Flavor To Salads English Walnuts . . . . . **49c**
- Children Love 'em Fresh Roasted Peanuts . . . . . **29c**
- California Candy-Sweet Fresh Dates . . . . . **17c**

## "SUPER-RIGHT" MEATS

A tender, juicy treat to eat

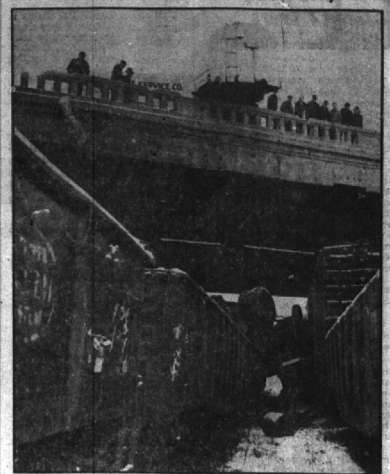
- Super Right Tender Milk-Fed Leg of Veal . . . . . **39c**
- Super Right Prime Beef Rib Roast . . . . . **49c**
- Super Right Shoulder Cut Veal Roast . . . . . **33c**
- Chuck Roast . . . . . **Lb. 43c**
- Super Right—Corn Fed Steer Mild-Cured Smoked or Cooked Picnics . . . . . **49c**
- Make A Quick Lunch—Skinless Frankfurters . . . . . **39c**
- Tasty and Delicious Fresh Smelts . . . . . **29c**
- Fresh Caught—Wasteless Cod Fillets . . . . . **41c**
- No Bones—Bake, Fry or Broil Haddock Fillets . . . . . **43c**

## PANTRY PROVISIONS

Thrifty buys for the budget-wise

- Sweet Early June Iona Peas . . . . . **2 26-Oz. Cans 23c**
- Silver Floss Sauer Kraut . . . . . **3 17-Oz. Cans 29c**
- Thank You Brand Cut Green Asparagus . . . . . **19-Oz. Can 25c**
- Packers Label French Style Green Beans . . . . . **2 15-Oz. Cans 29c**
- Delicious in Soup—Scott County Mixed Vegetables 3 16-Oz. Cans **23c**
- Staff O' Life Blackberries . . . . . **28-Oz. Can 33c**
- County Fair or Flotill Peach-Pear Mix . . . . . **28-Oz. Can 29c**
- New Era Home Style Peaches . . . . . **28-Oz. Can 27c**
- Rich Vanilla Flavored Sparkle Pudding 2 2 1/2-Oz. Pkg. **13c**
- Use Stamp 53 Cane Sugar . . . . . **2 1-Lb. Box 47c**
- For Lenten Meals—Cold Stream Pink Salmon . . . . . **1 1-Lb. Can 32c**
- Removes Dirt and Grime Boraxo . . . . . **2 8-Oz. Cans 33c**
- Softens Hard Water Borax . . . . . **1-Lb. Pkg. 18c**
- Paas Decorative Gay Easter Egg Colors 3 Pkg. **25c**
- Chick-Chick Colorful Easter Egg Dyes . . . . . **Pkg. 25c**

## And the Driver Walked Away!



The driver of this trailer truck was injured but able to walk away after he lost control on slippery pavement and the cab crashed over the viaduct wall, falling 40 feet to lodge between two freight cars at Chicago.

## Bowling Scores

BIRMINGHAM MERCHANTS LEAGUE		LADIES HOUSE LEAGUE	
March 17, 1947		March 17, 1947	
Can. Cola	71	W. L.	1
Birmingham Fruit	70	Triangle Engineering	64
Planting	65	Atkins Book & Gift Shop	64
Birmingham Recreation	59	Birmingham Movers	64
Faillines Mfg Co.	58	Williams Jewelry	54
Goodell	58	Williams & Bir	54
Adams Florist	44	Williams Book Shop	49
Line Cuts	35	Mr's. Henry Sabin	49
Scrub	30	Williams Boy & Girl Apparel	45
Lake Cuts	28	Miss Auto Supply	40
Lake Jeweler	28	Burr's Shoes	38
Team High (11)—L. Roehm, 199; (13)—Ind. High (11)—L. Roehm, 199; (13)—Ind. High (11)—L. Roehm, 199; (13)—F. Brady, 244.		Team High (11)—L. Roehm, 199; (13)—Ind. High (11)—L. Roehm, 199; (13)—F. Brady, 244.	

## Plans for Cancer Drive Reported. Ahead of Schedule

Progress of the annual American Cancer Society drive for funds in Birmingham and Bloomfield Hills was revealed today as far in advance of last year by Mrs. Walter E. Powers, chairman of the drive.

With the drive actually getting under way here April 11, the organization which will do the work has been advanced to the point where it is ready, Mrs. Powers pointed out.

"More volunteer workers are always needed in a campaign of this kind," she stated. "So that no person will be overlooked, we plan to have an adequate staff of solicitors to make possible a house-to-house canvass. In order to accomplish this, more workers are needed, especially those who can round up, especially those who can round up the area south of Maple avenue."

**\$10,000 Local Goal**

Mrs. Powers was confident that the local goal would be reached in this community during April.

"We feel sure we can raise our share of the \$12,000,000 national goal," she said, declaring that the local organization was actually aiming at a figure in excess of the quota assigned this community by the state division of the American Cancer Society.

"Birmingham women will be contacted shortly for help with the drive, and any volunteer will be welcomed. None will be asked to do 'the impossible' but the more who volunteer, the greater will be the result," she said.

With consumers sharing in the benefits, this group of company finds that every \$1,000 invested in research in the last ten years returned \$15,412 in more efficient production, new products or reduced royalties.

## THE POCKETBOOK OF KNOWLEDGE By PILGRIM

**Next Year's Federal Budget Envisions . . .**  
TOTAL ABOUT 80% OF ALL WAGES AND SALARIES PAID BY MANUFACTURING CORPORATIONS

**MORE THAN 60% OF U.S. PRODUCTION COMES FROM SMALL BUSINESSES**

**COFFEE WAS INTRODUCED INTO AMERICA IN 1720 BY A FRENCHMAN WHO IMPORTED A SINGLE PLANT INTO WASHINGTON**

**LEAVES ARE OUT IN COLD**

**THE ROYAL ORCHARD HAS A 304 DAY YEAR OF 72 MONTHS**

**THE ELEPHANT RUNS A TEMPERATURE EQUAL TO MAN'S**



Store Hours: 9 A. M. to 6 P. M. Daily  
Except Friday 9 A. M. to 9 P. M.

**Baked Beans**  
Ann Page Boston Style  
Tender-Cooked and Delicious  
**2 12-Oz. 25c**

**Niblets . . .**  
Fresh Corn off the Cob! Adds Better Eating  
To Any Meal With Special Flavor and Tenderness  
**2 12-Oz. 31c**

**Green Giant Peas . . .**  
The Great Big Tender Kind, Picked at the  
Electing Moment of Perfect Flavor  
**28-Oz. 24c**

**Vegetato . . .**  
LaCoby's Refreshing Vegetable  
Cocktail at a New Low  
Price  
**16-Oz. 24c**