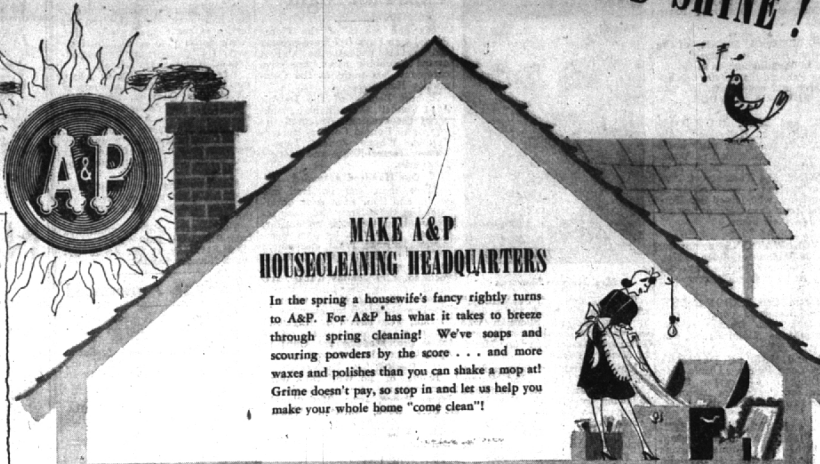


GIVE YOUR HOME THAT SPRINGTIME SPARKLE AND SHINE!



MAKE A&P HOUSECLEANING HEADQUARTERS

In the spring a housewife's fancy rightly turns to A&P. For A&P has what it takes to breeze through spring cleaning! We've soaps and scouring powders by the score... and more waxes and polishes than you can shake a mop at! Grime doesn't pay, so stop in and let us help you make your whole home "come clean"!

DELICIOUS, DEWY-FRESH FRUITS AND VEGETABLES

- California—Large 24 Size **Pascal Celery** 23c
- Idaho Baking **Potatoes** 15-lb. Cons. Bag 69c
- Southern White Firm **Cauliflower** Head 23c
- Porto Rican **Sweet Yams** 3 Lbs. 25c
- Serve a Boiled Dinner **New Cabbage** Lb. 5c
- Fresh Crisp **Carrots** 3 Bchs. 21c
- Solid, Crisp—60 Size **Head Lettuce** 2 for 19c
- California Candy-Sweet **Fresh Dates** 8-oz. Pkg. 17c
- Texas Pink Meat **Grapefruit** 10-lb. Mesh Bag 49c



MAINSTAYS FOR BUSY DAYS

- Del. Mai: Golden Cream Style **Corn** 20-oz. Can 15c
- Stokely's Finest Honey Pod **Sweet Peas** 20-oz. Can 20c
- Campbell's Chicken Noodle **Soup** 2 10 1/2-oz. Cans 33c
- Packery Label Unpeeled **Whole Apricots** 23c
- McKenzie's Butterflied **Pancake Flour** 17c
- Encore—In Rich Tomato Sauce **Prep. Spaghetti** 2 27c
- Cold Cream Tasty **Pink Salmon** 3lb. 31c
- Noodle Soup Mix **Lipton's** 3 1/2-oz. Pkg. 32c

WAXES

- Wonder workers you'll wax enthusiastically over!
- Self-Polishing for Floors **A-Penn Wax** Pint Can 37c
- Bright-Salt **Paste Wax** Lb. Can 32c
- Self-Polishing, Easy to Use **Simoniz Wax** Pint Bot. 59c

SOAPS & POWDERS

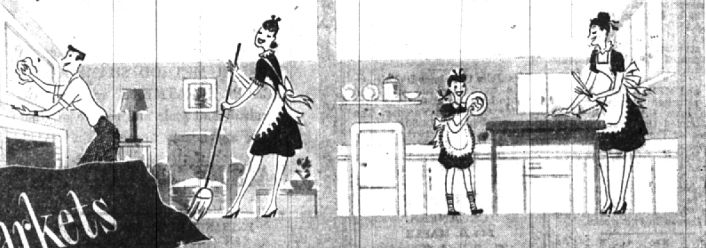
- Likely candidates for the scrub team.
- No Rinsing—No Wiping **Spic & Span** Lge. Pkg. 21c
- Pure White Soap **Chiffon Flakes** Lge. Pkg. 35c
- For Dishes, Hosiery, or Household **Vel** Lge. Pkg. 33c
- Safe for Silks and Woolens **Ivory Snow** Lge. Pkg. 35c
- For a Bright, White Laundry **Rinso** Lge. Pkg. 33c
- Solvents Hard Water **Wex Flakes** Lge. Pkg. 33c
- Cleans Paints and Woodwork **Solventol** 12-oz. Can 25c 60c
- Keeps Bowls Sparkling **Pur Bol** 22-oz. Can 16c
- Cleans Rugs and Carpets **Mystic Foam** Qt. Can 59c

POLISHES

- Shining stars that give a smooth performance.
- Lemon or Cedar—For Furniture **A-Penn Polish** 10-oz. Bot. 17c
- Cream Furniture Polish **O' Cedar Polish** 8-oz. Bot. 23c
- Wright's Quick-Easy **Silver Polish** 8-oz. Jar 21c

OTHER SUPPLIES

- Standard equipment for the clean-up squad.
- Solvents Water **Borax** 20 Mule Team Lb. Pkg. 17c
- Removes Grime—Hand Soap **Boraxo** 2 8-oz. Cans 33c
- Household Bleach—Plus Bottle Deposit **Roman Cleanser** 1/2 Gal. Bot. 15c
- Bright Sail Full Strength **Ammonia** Qt. Bot. 11c
- Steel Wool **Brillo Cleaners** Lge. Pkg. 19c
- Clean Pans and Pans **Chore Girl** 2 Pkgs. 15c
- Sturdily Made for Hard Use **DeMito Brooms** Each 79c
- Dust Zephyr **Dust Mops** Each 56c
- Windows or Mirror Cleaner **Window-Lite** 16-oz. Bot. 9c



A&P Super Markets

BAKERY TREATS

- Assorted Individual Danish **Pastry** 6 for 29c
- Flaky Crust, Rich **Cherry Pie** Each 59c
- Heart-Baked Crisp Party **Rye Bread** Loaf 15c
- Bar-Shaped Layer **Cakes** Each 59c

DAIRY FOODS

- Sunnybrook Large **Fresh Eggs** Dozen 56c
- Silverbrook **Butter** Lb. 76c
- Keyko Vegetable **Margarine** Lb. 42c
- American Cheese Food **Ched-O-Bit** 2-lb. Loaf 85c

WHITE HOUSE EVAPORATED MILK

Having White House Evaporated Milk on your pantry shelf is almost like having a cow in your backyard, for it's ideal for every milk need.



CHOOSE "SUPER-RIGHT" MEATS FOR GOODNESS SAKE!

- Good? "Super-Right" meats have gotta be good to get by the eagle-eyed experts who choose them for A&P from fine-quality corn-fed beef and pork, milk-fed veal and spring lambs.
- Super-Right Tender Rib Half** Lb. 49c
 - Pork Loins** Lb. 49c
 - Super-Right Tender Shoulder Cut** Lb. 35c
 - Veal Roast** Lb. 49c
 - Super-Right Lean Shoulder Cut** Lb. 49c
 - Veal Chops** Lb. 49c
 - Super-Right Corn-Fed Beef** Lb. 45c
 - Pot Roast** Lb. 45c
 - Makes Tasty Sandwiches—Large **Bologna** Lb. 39c
 - Super-Right Plump Young Fryers** Lb. 43c
 - Meats, Lean **Veal Breast** Lb. 29c
 - For a Savory Dinner—Beef **Short Ribs** Lb. 32c

REFRESHING A&P TEAS

- Skillfully blended and flavor-tested.
- OUR OWN** 1/2-lb. Pkg. 31c
- Full-bodied & thrifty.
- NEUTAR** 1/2-lb. Pkg. 33c
- Rich & flavorful.
- MAYAR** 1/2-lb. Pkg. 39c
- Delicate & fragrant.

FRESHLY ROASTED A&P COFFEES

- Freshly roasted and freshly ground.
- EIGHT O'CLOCK** Lb. 39c
- Mild and mellow.
- RED CIRCLE** Lb. 41c
- Rich & full-bodied.
- BOKAR** Lb. 43c
- Vigorous & winey.

Introduce Parents To New Principal Of Pierce School

Malcolm V. Ferguson, new principal of Pierce school, and his wife were introduced to the school's PTA last Thursday evening by Gerald White, retiring principal.

Parents enjoyed a visit with both principals and their wives over coffee and cake following the business meeting and entertaining program of records and movies arranged by White to illustrate the use of audio-visual equipment in Pierce school work.

A three-point plan of the board of directors was explained to the membership by the president, Wilbur Sears; first, to get out a record attendance of parents to hear the Board of Education explain school finances and the need for a five-mill tax levy when they visit the school April 15; second, to get 100% registration of qualified parent voters for the special school election May 5; third to get out a record vote of Pierce parents at that school election when the five-mill tax levy will be considered.

The Music of Thomas Hartle to be Presented March 25

Mr. Thomas Hartle, former choir director at the First Baptist Church will be presented at the Highland Park Methodist Church on Tuesday evening at 8:00 p. m.

The concert, sponsored by the Couples Club of the St. John's Methodist Church of Royal Oak, will be performed by the St. John's Choir and guests directed by the guest conductor, Ralph Wolter.

Mr. Thomas Hartle to be Presented March 25

Mr. Thomas Hartle, former choir director at the First Baptist Church will be presented at the Highland Park Methodist Church on Tuesday evening at 8:00 p. m.

The concert, sponsored by the Couples Club of the St. John's Methodist Church of Royal Oak, will be performed by the St. John's Choir and guests directed by the guest conductor, Ralph Wolter.

WATSON'S Tailor Shop and Furrier

244 E. MAPLE
New Spring Samples for Ladies and Gents Suits and Topcoats



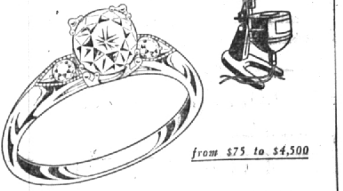
You're always confident, comfortable... with Kotex its flat tapered ends that prevent revealing outlines... its special safety center... are Kotex features that are "Very Personally Yours."

More women choose KOTEX than all other sanitary napkins

Wilson's

WOODWARD AT MAPLE

Seeing Is Believing!



The beauty of a truly fine diamond is clearly visible in our DIAMONDSCOPE. You see for yourself the flawless quality, exquisite cutting, brilliance and clarity. Don't guess, be sure your diamond is well cut, free from flaws, and has good color. Buy from Garlick and see the diamond through this scientific instrument pictured above.

Antiques and Modern China and Glass on Our Second Floor

J. H. Garlick & Sons
Certified Gemologists
1126 GRISWOLD ST.
Registered Jeweler—American Gem Society

Blu-White 10c
Blues while you wash, does not streak, subsists, brightens

Cleanser 11c
Swift's new Cleanser. In the Polka-dot Can.

Egg Dyes 25c
Pass Easter Egg Colors. For gaily decorated eggs.

Used Fats 15c
Save All Your Kitchen Fats. They Are Vitally Needed!

Sunbrite 10c
The Double-Action Cleanser. Purifies As It Cleans.

Blue Suds 10c
Blues As It Washes. Makes Your Laundry White.